



# SEPTEMBER 2018



**Great Stukeley Flower, Garden & Craft Show**  
**For results see Pages 13 to 16**

## Alconbury Weald Decorating Services



Don't be shy, give me a try.

Wallpapering, painting walls, woodwork etc.

Fully insured, sensible price, city & guilds qualified, 35 years exp.

References available from:

- Legal Director
- Local Magistrate
- Local GP
- Serving Police Officer
- Accountant



Call Rob on

07971 337 581

01480 891 961

[rob@alconburyandwealddecoratingservices.com](mailto:rob@alconburyandwealddecoratingservices.com)

[alconburywealddecorating.com](http://alconburywealddecorating.com)

# October 2018 Magazine Cut-off Date

Cut-off date for the October 2018 Stukeleys Parish Magazine is

## 9am Wednesday 19<sup>th</sup> September 2018

**\*\*\*\* Please do not be late \*\*\*\***

### FUTURE EVENTS

Mon 3 <sup>rd</sup> Sep	Parish Council Meeting	7.15 pm	GSVH
Sun 2 <sup>nd</sup> Sep	Tea Dance	3.00-6.00 pm	GSVH
Wed 19 <sup>th</sup> Sep	Heritage Group Annual Outing	9.30 am	GSVH
Wed 12 <sup>th</sup> Sep	WI Meeting	7.30 pm	GSVH
Sat 29 <sup>th</sup> Sep	Quiz Night	7.00 pm	Alconbury Primary School
Thu 18 <sup>th</sup> Oct	Fashion Show, Grand Arcade, Cambridge	at 7.00 pm	

\* ESCA= Ermine Street Church Academy

**Take a look at the Magazine website at [www.stukeleymag.co.uk](http://www.stukeleymag.co.uk)**

**Email to: Martyn at [martyn@stukeleymag.co.uk](mailto:martyn@stukeleymag.co.uk)**

**Post/drop in to: 7 Hill Close, Great Stukeley PE28 4AZ**

**Tel: 01480 432633 Mob: 07710 171924**

**Please include your phone number in case of queries.**

Space in the magazine is limited, so articles should be about 300 words. This is to allow as many people as possible the opportunity to contribute to the magazine. It would be helpful if you could submit articles sized to an A5 page in Word or PDF.

We reserve the right to refuse an article, cut its length or hold it over to a later issue without notice.

**Please Note:** This magazine is published by Martyn Fox with administrative and financial support from The Stukeleys Parish Council. The opinions expressed are not necessarily those of the Editor or of the Parish Council

A charge is made to advertise in this magazine. All enquiries should be directed to Martyn Fox (Tel: 01480 432633) or Ramune Mimiene, (Parish Clerk) Email: [clerk@thestukeleys-pc.gov.uk](mailto:clerk@thestukeleys-pc.gov.uk)

### This Month

Cover:	Great Stukeley Flower, Garden & Craft Show
Page 4:	Stukeleys Parish Council Report
Page 5:	Thank You & Heritage Group Annual Outing
Page 7:	Fashion Show
Page 9:	Lauren's "Clean My Street" Campaign
Page 10:	Community Coffee Morning
Pages 13 - 16:	Great Stukeley Show Results
Pages 18 - 19:	Hidden London & The Regent's Canal



There are 2 Vacancies on the Parish Council.

Parish Council are looking to get a new Neighbourhood Plan Group together. Community Infrastructure Levy (CIL) funding is being considered and the Parish Council has agreed to go ahead and contribute towards Village Halls refurbishment processes now as the applications and quotes by both Village Hall have been received and reviewed. There are other projects which can be funded using CIL money, which are under Parish Council's consideration.

SMY Football Club will play again on the playing field during 2018/19 season. Allotments are looking good despite the dry season. There are barely any vacant plots left now. Regarding the Community Funded advertising, explanatory text was submitted to the magazine but was not included, only a draft policy was published.

Clerk attended training run by Cambridgeshire and Peterborough Association of Local Councils which included General Data Protection Regulation.

---

*Please note that the full set of Parish Council Minutes is displayed on the Notice Boards in both villages and on the Parish Council Website. A hard copy of the Minutes can be obtained either at the Parish Council Meeting or can be requested from the Ramune Mimiene, Clerk; Martyn Fox, the Editor of this newsletter.*

Note: List of Parish Council Meeting days is set below (please note Parish Council do not usually meet in January and August, but please be aware that there might be an extraordinary PC Meetings during these periods).

**The Stukeleys Parish Council 2018 Venues for Council Meetings**

**The open session starts at 7.15pm and the Parish Council Meeting starts at 7.30pm**

No meeting in August - Mon 3 Sep – GSVH - Mon 1 Oct – LSVH

Mon 5 Nov – Ermine Street Church Academy - Mon 3 Dec - LSVH

Please check the website and Notice Boards for Extraordinary meetings.

***Clerk to the Council***

***Ms Ramune Mimiene***

24 Manchester Road, Brampton, Cambs PE28 4QF

01480 535265/ 07595 891618

[clerk@thestukeleys-pc.gov.uk](mailto:clerk@thestukeleys-pc.gov.uk)

<https://www.thestukeleys-pc.gov.uk/>



## Thank You

Billie & Buster would like to thank everyone in the Villages for their cards, gifts and kind words and congratulations on our 65<sup>th</sup> Wedding Anniversary.

# Stukeleys Heritage Group Annual Outing Bury St Edmunds Wednesday 19th September 2018.

Thank you to those who have supported the Heritage Group by booking seats for our annual trip.

**We depart from Great Stukeley Village Hall at 9.30 am.**

We set out for home at 4.30 pm.

Please note we will be dropped out in Bury St. Edmunds on Angel Hill, right in the heart of the historic quarter close to the Cathedral and Abbey Gardens. There are cafes and restaurants very close by which will be ideal for those not wishing to walk far.

Let's hope for a fine day!

**Michael Monk**

Convenor

01480 456634/0776 137 2224 - [michaelgmonk@hotmail.com](mailto:michaelgmonk@hotmail.com)

### **St Bartholomew's Church Advance notice:**

Sunday 7<sup>th</sup> October there is Harvest Festival in Church followed by Harvest Lunch in Gt Stukeley Village Hall at 12 noon. Tickets £10 from Nancie Raby 01480 453269.

Saturday 13<sup>th</sup> October Huntingdon Male Voice Choir in St Bartholomew's Church at 7.30pm.

GREAT STUKELEY VILLAGE HALL  
INVITES YOU TO A



On Sunday 2<sup>nd</sup> September 2018 3-6pm

At Great Stukeley Village Hall  
Owl End Great Stukeley PE28 4AQ

Step by Step Ballroom will lead the dances and give a demonstration. So why not come and join us for a twirl round the dance floor and enjoy a cup of tea and slice of cake.

Tickets priced £5 are available from Carol Buttercase 458089 or Helen and David Silsby 459543 or Sarah Toyn 07961 358067

# Fashion Show: Grand Arcade, Cambridge

## Thursday 18 October 2018 7pm

Four years ago, following a routine mammogram I was given the shocking news that I had invasive lobular breast cancer. I was preparing for our son's wedding at the time and my first thoughts were "Will I be able to attend". Fortunately, they gave me a little time before surgery and so I had the best time ever at my son's wedding!

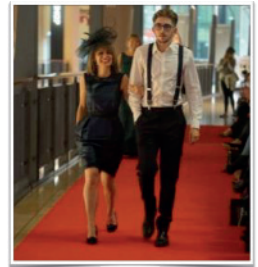
Addenbrookes Hospital saved my life and were brilliant throughout all the appointments and surgeries. As a "thank you" I have immersed myself in helping to raise funds for their Breast Cancer Unit. My first project was to star in a Utube video for Addenbrookes Charitable Trust which has since raised over £1m to help in specialised treatment research for the 10 breast cancers.

Through the Charitable Trust, I learned that another breast cancer survivor, amazing Natalie Emuss, had organised a couple of Charity Fashion Shows and was embarking on an ambitious one to be held in the Grand Arcade Shopping Centre, Cambridge. Natalie invited me on board and I am now about to model in a third fashion show at the Grand Arcade. Rigby & Peller are our main sponsor so we model lingerie and also clothes and accessories from a number of other stores in the Grand Arcade.

All our models are breast cancer survivors who brave the catwalk. They wish to raise awareness and the importance of checking one's self regularly.

It is a ticketed event including welcome drink and canapés, together with a raffle. We hope you will be able to join us for a fantastic, uplifting evening on Thursday 18 October. Jeremy Sallis, the BBC Cambridgeshire presenter, will comper the evening once again. So please come and have fun with your friends and family and at the same time support these wonderful ladies.

**Tickets are on sale now on our new website which has been created by Clarity CB1**  
[www.cambridgebreastcancerappeal.com](http://www.cambridgebreastcancerappeal.com)



### In memory of Becky Hadfield

This year's fashion show is dedicated to our dear friend Becky Hadfield who we lost in January 2018.

Becky modelled in our 2016 show and was a huge part of our breast cancer family. She was keen to raise awareness and continued to fundraise throughout



her illness. Becky will always be in our hearts.

**Julia Caldeira**



Great Stukeley Village Hall Committee cordially invites you to step back in time for

# **A 1940s Evening**

**On Friday 7<sup>th</sup> December 2018**

**From 7.30 – midnight**

**At Great Stukeley Village Hall**

So put on your retro gear and join us for an evening of 1940s entertainment including vocals provided by the talented **Steve Lake and his daughter Aimee**

Tickets are £15 to include a meal can be purchased from Helen and David Silsby 459543 Carol Buttercase 458089 or Sarah Toyn 07961 358067



## Thank You

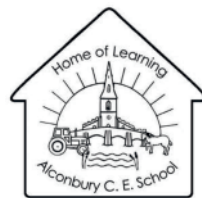
Thank you to all the residents who sponsored Lauren's "Clean my Street" Campaign to raise money for her Ghana school fundraiser.

Lauren collected rubbish in and around the village on Sunday August 12th.



### GREAT STUKELEY VILLAGE HALL – REGULAR ACTIVITIES

Time	Activity	Organiser
<b>Mondays</b>		
7-10pm	Bridge	Barry Ward 382105
<b>Tuesdays</b>		
9.30-10.20am	<b>Pilates</b> (term time only)	Zara Walters 07917 755512
7-9pm	<b>Dog Training</b>	Sue Elliott 07760 750223
<b>Wednesdays</b>		
10.30-12.00 last Wed	<b>Community Coffee Morning</b>	Jan Sly 450197
2-4pm 4 <sup>th</sup> Wed	The Craft Club	Joan Gray 455773
7.30-10pm 2 <sup>nd</sup> Wed	<b>The Stukeleys Women's Institute</b>	Jan Sly 450197
<b>Thursdays</b>		
10-12	Badminton (private booking)	
<b>Fridays</b>		
9.30-12.00pm	<b>Pilates/Yoga</b>	Helen Decker 07980 940366
1.30-3.30pm	Bridge	Joan Lawford 52464
<b>Saturdays</b>		
9.00 10.15	<b>Jazzercise</b> Dance Mixx Strength 45	Dana Rowe 07760 824609
<b>To book GSVH please call 07934 853646</b>		
<b>The activities in bold welcome new members</b>		



## CHRISTMAS SHOPPING EVENING

Why not join us for a festive evening of shopping and get Christmas all wrapped up?

Enjoy hot food, festive nibbles, hot beverages and a glass of Prosecco. Browse our many stalls, packed full of lovely Christmas treats.



Location: Alconbury Primary School

Date: Friday 16<sup>th</sup> November 2018

Time: 7pm to 9pm

FREE ENTRY!!!

Alternatively, if you would like to book a stall please contact the FACES Committee on

[faces@alconbury.cambs.sch.uk](mailto:faces@alconbury.cambs.sch.uk)

or call Ellicia 07710 167071



Unfortunately, no buggies (due to restricted space) and no primary aged children.

# **Community Coffee Morning**

**Wednesday 26<sup>th</sup> Sept  
10.30 – 12.00**

**At Great Stukeley Village Hall  
(and every last Wednesday until November)**

**The money raised will be shared  
between The Stukeleys WI and  
St Bartholomews Church.**

**Do come and join us. Any  
donations for the bring and buy  
stall will be gratefully received.**

Alconbury Primary School Presents

Date: Saturday 29th September @ 7pm

Venue: Alconbury Primary School, PE28 4EQ

# QUIZ

BYOB  
and  
snacks

# NIGHT

**FISH AND CHIP SUPPER INCLUDED!**

**VEGETARIAN OPTION AVAILABLE**

JUST £10pp  
MAX. 6 PER TEAM  
TOP TEAM WINS  
PRIZES!

TICKETS AVAILABLE  
FROM THE SCHOOL  
OFFICE OR ONLINE AT  
[www.pta-events.co.uk/  
alconburyfaces](http://www.pta-events.co.uk/alconburyfaces)

**GREAT STUKELEY FLOWER, GARDEN & CRAFT SHOW 2018 RESULTS**  
**SECTION A VEGETABLES**

	1 <sup>st</sup>	2 <sup>nd</sup>	3 <sup>rd</sup>
A1 POTATOES	S REYNOLDS	S REYNOLDS	S REYNOLDS
A2 SHALLOTS	E CHARTER	E CHARTER	M STEPHENSON
A3 ONION SETS DRESSED	E CHARTER	S REYNOLDS	
A4 CHILLIES/PEPPERS	R FISHER	A MORRIS	I SHAW
A5 CARROTS		R FISHER	
A6 BEETROOT	M STEPHENSON		
A7 MARROW	M STEPHENSON	R FISHER	
A9 RUNNER BEANS	M STEPHENSON	D OWEN	I SHAW
A10 FRENCH BEANS	M STEPHENSON	M STEPHENSON	
A11 COURGETTES	I SHAW	M STEPHENSON	
A15 CUCUMBER INDOOR	S REYNOLDS		
A16 CUCUMBER OUTDOOR	M STEPHENSON	R FISHER	
A17 TOMATOES INDOOR	S REYNOLDS		
A18 TOMATOES OUTDOOR	A MORRIS	M STEPHENSON	A MORRIS
A19 TOMATOES CHERRY	A MORRIS	A MORRIS	M MONK
A20 HERB COLLECTION	A MORRIS	E CHARTER	
A23 RHUBARB		D OWEN	
A24 LONGEST R'BEAN	M STEPHENSON		
A25 UNUSUAL SHAPED V/F		J CHAMBERS	
A26 ANY OTHER VEG	M STEPHENSON	R FISHER	
A27 SQUASH/PUMPKIN	M STEPHENSON	M STEPHENSON	

**SECTION B PLANTS & FLOWERS**

B2 DAHLIAS POM POM	I SHAW		
B4 GARDEN FLOWERS	A OWEN	I SHAW	A OWEN
B5 FLOWERING SHRUB	A MORRIS	J WOOD	M MONK
B6 FLOWERING ANNUALS	A MORRIS	I SHAW	I SHAW
B7 GLADIOLI		I SHAW	
B8 SWEET PEAS	I SHAW		
B9 ROSES HT	A OWEN	M MONK	
B10 SUNFLOWER	M STEPHENSON	M MONK	I SHAW
B11 SINGLE ROSE	J SLY	B EVANS	S BERRILL
B12 ANTIRRHINUMS	A OWEN	J SLY	
B13 PANSIES/VIOLAS	S BERRILL	S BERRILL	

B14 POT PLANT FOLIAGE	I SHAW		
B16 POT PLANT FUCHSIA	S REYNOLDS	S REYNODLS	I SHAW
B17 PELARGONIUM	I SHAW	S REYNOLDS	I SHAW
B18 CACTUS/ SUCCULENT	A MORRIS	I SAHW	I SHAW
SECTION B2 FLORAL ARRANGEMENTS			
B19 FRESH FLORAL	J SAPSED	J SLY	
B20 WEDDING BOUQUET	J SAPSED		
B21 BUTTONHOLE	J SAPSED	J SLY	J WOOD
B22 CORSAGE	J SAPSED	S BERRILL	J SLY
B23 FOLIAGE	J SLY		
B24 IN A MUG(MEN)	I SLY	G BUNDY	
B25 UNUSAUAL CONT	D BUNDY	J WOOD	J SLY
B26 CENTENARY	J SLY	J SAPSED	
SECTION C HOME PRODUCE			
C1 VICTORIA SPONGE	J SLY	P OAKES	I HOLOHAN
C2 QUICHE	R FORD		
C3 BISCUITS	R FORD	A MORRIS	R FORD
C4 MEN'S DOCKEY CAKE	G BUNDY	G BUNDY	I SLY
C5 SAUSAGE ROLLS	R FORD		
C6 SHORTBREAD	I HOLOHAN	I HOLOHAN	R FORD
C7 FLAPJACKS	A MORRIS		
C9 SCONES	A MORRIS	P OAKES	POAKES
C10 CHEESE STRAWS	A MORRIS	J SAPSED	R FORD
C11 MERINGUES	A MORRIS		J SAPSED
C12 HOMEMADE JAM	A MORRIS		P OAKES
C13 HOMEMADE M'LADE		A MORRIS	
C14 H'MADE CHUT/PICK	J TILDEN		
C15 H'MADE CURD			A MORRIS
C16 H'MADE WINE	A MORRIS		
SECTION D1 ARTS & CRAFTS			
D1 H/K GARMENT	J WOOD	M BROCKETT	
D2 H/K BABY CLOTHES	M BROCKETT		
D3 BEADING	S REYNOLDS		
D4 EMBROIDERY ETC	N CHARTER	M BROCKETT	J TILLER
D5 CUSHION	N SLY	M BROCKETT	
D6 CROCHET	N SLY	N SLY	

D7 SOFT TOY	M BROCKETT	I HOLOHAN	
D8 DRESSED DOLL	M BROCKETT		
D9 NEW FROM OLD	V RICHARDSON	M BROCKETT	
D10 WEDDING I'VIT	J TILLER	N SLY	
D11 CENTENARY CARD	J TILLER		
D13 QUILTING ETC	M FIELD		
D14 DRAWING	JOHN WOOD	J TILLER	J TILLER
D15 PAINTING	M FIELD	D BURT	M FIELD
D16 LADIES H'CRAFT	M BROCKETT	N SLY	
D17 GENT'S H'CRAFT	B EVANS	V RICHARDSON	V RICHARDSON
<b>SECTION D2 PHOTOGRAPHY</b>			
D18 FAMILY FUN	S STEPHENSON	S STEPHENSON	S BERRILL
D19 WINTER	M BROCKETT	C HARRIS	S STEPHENSON
D20 BEGINNING WITH J	S STEPHENSON	J TILLER	M BROCKETT
D21 BEST SELFIE	S STEPHENSON		
D22 LANDSCAPE	C HARRIS	S STEPHENSON	M BROCKETT
D23 SUNRISE	M STEPHENSON	C HARRIS	S STEPHENSON
D24 DRESSED PETS	S STEPHENSON	S BERRILL	J WOOD
<b>SECTION E CHILDREN UNDER 16</b>			
E3 DECORATE JAM JAR	R SLY		
E4 COOKERY	R SLY		
E5 SOCK PUPPET	R SLY		
E8 COLOUR SCHEDULE	R SLY	E TURNER	
<b>GARDEN COMPETITIONS</b>			
BEST SPRING GARDEN	M MONK	P JONES	I SHAW
	33 CHURCH RD	16 CHURCH CLS	19 MOORFIELD
BEST KEPT GARDEN	I SHAW/A OWEN	JOINT WINNERS	
	D BUNDY	HIGHLY COMMENDED	
BEST CONTAINER	D BUNDY	WINNER	
	S REYNOLDS	HIGHLY COMMENDED	
BEST HANGING BASKET	P JONES	WINNER	
	A MORRIS	HIGHLY COMMENDED	

**DUE TO LACK OF ENTRIES THERE WERE ONLY WINNERS AND HIGHLY COMMENDED FOR THE BEST KEPT GARDEN, BASKETS & CONTAINER COMPETITIONS. SO PLEASE WE NEED MORE OF YOU TO ENTER!.**

**GREAT STUKELEY FLOWER, GARDEN & CRAFT SHOW CUP WINNERS**

**MOST POINTS HOME PRODUCE ANN MORRIS**

**THREE ROSES**

**BEST FLORAL ARRANGEMENT**

**MOST POINTS FLOWER SECTION**

**MOST POINTS FLORAL ARRANGEMENTS**

**MOST POINTS VEGETABLE SECTION**

**STEVE HURST CUP-BEST POT PLANT**

**SWEET PEA TROPHY**

**EVA WENDHOLT-SHORTBREAD TROPHY**

**ART & CRAFT CUP**

**BETTY WOOLCOOT TROPHY**

**EMBROIDERY TRAY (MOST POINTS D4)**

**BEST ENTRY PAINTING/DRAWING**

**BEST SINGLE PHOTOGRAPH**

**MOST POINTS PHOTOGRAPHY**

**MARK HAYWARD TROPHY (UNDER 10YRS)**

**PLATE FOR MOST POINTS KIDS SECTION**

**TROPHY FOR YOUNGEST EXHIBITOR**

**FAMILY TROPHY**

**BEST SPRING GARDEN GT STUKELEY**

**BEST KEPT GARDEN GT STUKELEY**

**TROPHY FOR BEST CONTAINER**

**TOM BUTTERCASE TROPHY/HANGING BASKET**

**LADIES TROPHY (SECTIONS A,B,C,D)**

**BEST ENTRY IN SHOW**

**MOST POINTS IN SHOW**

**KEN PARKIN MEMORIAL TROPHY/DOCKEY CAKE**

**ANDREA OWEN**

**JILL SAPSED**

**IAIN SHAW**

**JILL SAPSED**

**MARTIN STEPHENSON**

**SYLVIA REYNOLDS**

**IAIN SHAW**

**IRENE HOLOHAN**

**MARION BROCKETT**

**MARION BROCKETT**

**NITA CHARTER**

**MARIA FIELD**

**SHEILA STEPHENSON**

**SHEILA STEPHENSON**

**RILEY SLY**

**RILEY SLY**

**EMMETT TURNER**

**NICKI SLY/RILEY SLY**

**MICHAEL MONK**

**IAIN SHAW/ANDREA OWEN**

**DAWN BUNDY**

**PETE JONES**

**ANN MORRIS**

**MARIA FIELD**

**ANN MORRIS**

**GRAHAME BUNDY**

On behalf of the flower show committee, I would like to thank the people of Great Stukeley for the support at the show. To the committee and volunteers who helped set up the hall the day before and clearing up after the show. A big thank you to those who helped with booking in, doing cream teas, raffle and tombola. We had 299 entries on the day which was a surprise considering the prolonged period of dry hot weather, and I admire those who put vegetables and flowers in as your efforts must have been huge or costly. I would like to congratulate all those trophy winners and lastly a big thank you goes to the committee for your help and support once again, we are a good team. If anyone is interested in joining the flower show committee please don't hesitate getting in touch, we meet 6 times during the year and meetings are a relaxed approach as we are just planning our annual community event which is well supported and liked.

Iain Shaw



## REFLECTIONS: THE PEOPLE'S POST

*Tuesday 15th May 2018*

On Tuesday 15th May 2018 we were a group of twenty-four (24) for this much looked forward to trip. We set out from the Great Stukeley Village Hall ON TIME at 08.30am. However, the high volume of traffic that morning slightly delayed our meeting up with Doug, our *Blue Badge Holder Guide* at the Museum of London.

After refreshments we set out on a most interesting walking tour where reminders of our Postal History-from the Inns where the mail coaches called with their scarlet-clad, blunderbus wielding guards to the Coffee Houses which were an integral part of the *Penny Post Network*. We were also able to visit the *Memorial to Heroic Self Sacrifice* in Postman's Park which has just been given Grade II\* listed protection under the project "Immortalised" by *Historic England*.

It was a warm and sunny day and gave us the opportunity to eat out at the *Exmouth Market* where there was an excellent choice of restaurants and street food. Following lunch, we were taken to the incredible *Mail Rail* where we were able to take a journey back in time riding the hidden underground tunnels of London's secret century old Post Office railway. Here the fee for the ride was included in the cover price of our day trip. We walked a short distance to the *Postal Museum* enabling us to see an incredible collection spanning five centuries covering everything from ground breaking design and quirky technology to the intimacy of personal letters and an outstanding collection of postal equipment, vehicles and postboxes. After this most informative visit we were able to buy refreshments before taking our journey home. Around 7pm we arrived back at the Great Stukeley Village Hall having experienced a delightful visit to London.

## THURSFORD'S CHRISTMAS SPECTACULAR 2018

*Sunday 18th November 2018*

THURSFORD'S CHRISTMAS SPECTACULAR is the largest Christmas Show in the country.

The show, set in the magical surroundings of mechanical organs and fairground carousels has a fantastic cast of over one hundred and thirty (130) performers-delivering non-stop variety in an extravaganza of singing, dancing, music and humour to the highest standard.

The lavishly decorated auditorium is simply stunning with a riot of Christmas colours and thousands of twinkling lights and festive decorations to rival any Hollywood film set.

The show, on *Sunday 18th November 2018*, begins at 2pm PROMPT.

PLEASE REMEMBER that this terrific trip also offers a chance to visit the amazing *Dickensian Shopping Village* at Thursford, time to have a bite to eat before the start of the show and to visit the exciting Christmas attraction-SANTA'S MAGICAL JOURNEY INTO CHRISTMAS! Note that there is an additional charge per person of £5.00 for this attraction when you present your ticket.

The cover price this year is £58.50 per person which includes your coach to and from Fakenham and a tip for the driver and DELUXE CENTRE STALL SEATS in rows B/C/D and G between numbers 16 and 29. These REALLY ARE SUPERBLY POSITIONED FULL ROWS! Your tickets will be given to you on the day.

PLEASE NOTE that we meet at the Great Stukeley Village Hall at 9.45am for a PROMPT 10.00am departure. REMEMBER that there is NO parking at the Village Hall.

**Mary Alleyne-James**

Organizer, Tel 01480 433 954

# Hidden London and The Regent's Canal

## Tuesday 11th September 2018

This truly wonderful day trip includes a "gentle" walking tour in Smithfield and a Cruise on The Regent's Canal. This is one of the MOST POPULAR Tours of the past THIRTY(30) years. So delighted that you are joining us!

- 07.50am PLEASE plan to arrive at the Great Stukeley Village Hall. NOTE that parking at the Village Hall is NOT PERMITTED.  
PLEASE NOTE NEW DEPARTURE TIME.
- 08.00am PROMPT departure by Kiddles Coaches from the Great Stukeley Village Hall. PLEASE BE ON TIME as we have an eighty-three (83) mile journey ahead in traffic.
- 10.25am Meet with our *Blue Badge Holder Guide*, Sean Kelleher.
- 10.30am ESTIMATED time of arrival at the *Museum of London* on London Wall which follows the line of the Roman City Walls - for morning refreshments (NOT included in your cover price).
- 11.15am Our very well informed *Blue Badge Holder Guide*, who will be with us for our entire visit to London, will tell us about the raucous *Bart Bartholomew Fair* and watching the grisly public executions. We will visit London's *first Hospital* and the famous *Meat Market*. We begin with our gentle walk at the *Aldersgate* and will make our way to the *Newgate* via a maze of narrow streets and bygone alleyways surrounding the "smooth field" now known as *Smithfield*.
- 12.00pm Our Guide, during our walk, will also allow us to visit *Postman's Park* to see the memorial plaques telling of tragic and brave acts of heroic self sacrifice and we will walk beneath a *Tudor* gatehouse into the yard of London's oldest Parish Church-*St Bartholomew-the-Great* (1123). This exciting walk will include the gardens and the little museum at *Charterhouse* open for the very first time since 1384!
- 12.45/ We will have FREE TIME in *Smithfield* to buy lunch. If needed our  
1.00pm well informed guide will give us tips and suggestions as to where to eat. There is bench seating in the Garden and a great selection of pubs and cafes -including one in the cloisters of *St. Bartholomews' Church*
- 2.20pm We rejoin our *Blue Badge Holder Guide* at *Guiltspur Street*.
- 2.25pm We begin our coach tour to *Little Venice* where we will pick-up our traditional "narrow boat" that once carried cargo on the *Grand Union Canal*.
- 3.00pm Our wonderful FIFTY (50) minute cruise begins. During our cruise we will pass through *London Zoo* and the *Aviary* designed by *Lord Snowdon*. We also pass beneath the *Blow-Up Bridge (Macclesfield Bridge)* and glide silently through a very narrow tunnel where barges once used horses to pull the *Narrow Boats*.

- 3.50pm We arrive in the cobbled and flagged yard of *Camden Lock* where there will be time to buy afternoon tea and make a comfort stop before heading home.
- 4.45pm PROMPT departure on our coach for our homeward journey to Great Stukeley.
- 7.00pm ESTIMATED TIME OF ARRIVAL at the Great Stukeley Village Hall depending on traffic out of London.

If you have any questions regarding this super trip please feel free to contact me.

**Mary Alleyne-James**  
Organizer  
Tel 01480 433 954  
Email [barriegjames@aol.com](mailto:barriegjames@aol.com)

**PLEASE BRING THIS PROGRAMME WITH YOU  
ON THE DAY OF THE TRIP!**

---

**NEW! The Brick Lane Music Hall  
MOTHER'S GOOSSED. For Grown Ups ONLY!  
Thursday 14th February 2019**

Join us to visit *The Brick Lane Music Hall* on Thursday 14th February 2019 to attend their incredible - Adults Only - MOTHER'S GOOSSED 2019 Pantomime.

I am trying to get together a small group to enjoy this wonderful show with all the fun and excitement of an English Pantomime.

For small groups the cost of a coach is prohibitive, so I am offering this event for just £47.00 per person which includes a THREE COURSE lunch and the show. However, it means that we will have to use our own private cars. I have already obtained FREE PARKING at *Brick Lane* for my group.

We will be meeting at the Great Stukeley Village Hall at 09.45am for a PROMPT 10.00am departure allowing us plenty of time to arrive at the venue by 12 noon for our entry at 12.15pm. *Brick Lane Music Hall* is located in Silvertown next to City Airport.

This very special visit is limited to just TEN (10) people which means that the first ten who sign-up will join in all the fun and terrific atmosphere which we have come to expect when visiting one of Vincent's Pantomimes.

Please let me know if you would like to join this band of *Brick Lane* fans.

**Mary Alleyne-James**  
Organizer  
Tel 01480 433 954

# **NEW: WINTER IN WINDSOR**

## **One of the Top Ten Winter Warmers!**

### ***Tuesday 5th February 2019***

The perfect time to visit *Windsor* is in the Winter Months. There are fewer tourists plus there are extra rooms open in *Windsor Castle* and the *Queen's Farm Shop* will be open selling produce from the Royal Farms.

On Tuesday 5th February 2019 I am organizing *just for you* an incredible trip not only to the *Royal Borough of Windsor* but a visit with your well informed *Blue Badge Holder Guide* -with us throughout our trip- to see the state apartments and semi-state rooms of *Windsor Castle* and *St. George's Chapel*, where ten monarchs are buried, and where *Meghan Markle* married *Prince Harry* on 19th May 2018!.

**During this super trip we will be visiting:**

***St. George's Chapel***

***The Albert Memorial Chapel***

***The Castle Precincts***

***The King's Drawing Room***

***The State and Octagonal Dining Room***

***The Grand Reception Room***

***The King's Dining Room***

***The Queen's Ballroom***

....and another EIGHT (8) Castle features and apartments NOT listed above!.

We will also be taking a coach tour of the Royal Landscape including the *Long Walk*, *The Home Park*, *Old Windsor*, *Runnymede* and many other places of local interest including *Ascot Race Course*, *The Golden Gates* and the *Ancient Oak Pollards*.

With a lot of "consideration" and "help" from my coach company I am able to bring this per person price in at £55.00 which is exceptional value-for-money for this programme.

We will be leaving from the Great Stukeley Village Hall at 8.00am with a meet- up time of 7.45am on Tuesday 5th February 2019.

This is going to be a very full trip and I have limited places so PLEASE CALL ME soon to avoid disappointment.

**Mary Alleyne-James**

Organizer

Tel 01480 433 954

# YOUR STUKELEYS MAGAZINE



## NEEDS YOU!

Contributions of all sorts needed.  
Send in anything you feel may be of  
interest such as stories, photos,  
crosswords, etc.

Anything will be considered.

Adverts also needed.

The rates are very reasonable.

Please contact Martyn at

[Martyn@stukeleymag.co.uk](mailto:Martyn@stukeleymag.co.uk)

Or 01480 432633

## What *will* happen to your family and estate after you die?

Assist Law has over 50 years' experience in  
delivering high quality legal services.

Services very popular with our clients:

- Estate planning review: What *will* be left?
- Mitigating the cost of **care fees**
- Mitigating against **Inheritance Tax**
- Lasting Power of Attorney to protect  
**vulnerable** family members

For a no-obligation conversation, contact  
Estate Planner, Ed Bristow  
Telephone or text: 07786061457  
or email: [edwinbristow@assistlaw.co.uk](mailto:edwinbristow@assistlaw.co.uk)



**Assist  
Law**



Ensuring  
continuity of service  
to its members' clients

**Limited  
SPECIAL OFFER:  
£79 per Will  
Normally £135!**

## Just Like Home Pet Boarding!

High quality, home-from-home  
boarding care for the smallest  
of small animals!

Home visits available for all  
pets!

Based in Alconbury Weston.  
Fully insured.

Please contact Helen on  
01480 896602 or email

[JustLikeHomePetBoarding@gmail.com](mailto:JustLikeHomePetBoarding@gmail.com)

## Rock-ola Rockets 50s Rock n Roll/Rockabilly band



The Rock-ola Rockets are a 4 piece band  
playing Rock n Roll/Rockabilly covers  
from the 50s. Available for all events clubs,  
parties, weddings, functions ect.

Please visit our website for info, video  
clips etc. also over 40 live clips of the  
band on youtube.

[www.rockolarockets.co.uk](http://www.rockolarockets.co.uk)  
Mob. 07958493555

**MOVEMENT  
WITH  
MINDFULNESS**

*New Classes every Friday  
Pilates 9:30am / Yoga 10:40am  
Great Stukeley Village Hall*

*Starts 25<sup>th</sup> August*

*Contact Helen for more information:  
(helenwandecker@hotmail.com / 07980 940366)*

**Local Cleaning Service**

**Busy or unable to clean?  
Let Me do it for you**

**Over 25 years'  
experience**

**Ring:**

**Mrs Terry Paddick  
after 6 o'clock pm**

**Tel: 01480 453795**

**BeautifullyU**

I offer a comprehensive range of beauty, body and nail treatments in a relaxed yet professional environment based in Little Stukeley.

**Karen Goshorn**

Email: [karengoshorn@hotmail.co.uk](mailto:karengoshorn@hotmail.co.uk)

Contact: 07761302605

Dermalogica CND Shellac Minx Lauren's Way Tan LVL  
Lash Enhancement





**Hatha  
Yoga  
Classes  
2018**

Brampton and Little Stukeley  
Tuesday and Thursday evenings

Strength, Flexibility, Relaxation,  
Breathing and Fun

Mixed ability class for beginners  
to advanced students - everyone  
welcome

**Become mindful in your life.**

Booking required

Contact Jane

[yogawithjane@tutanota.com](mailto:yogawithjane@tutanota.com)

07958 757076



**A. DYOS LTD**

**Multi Trade Handyman Services  
Family Run Business**

**Established Over 25 Years**

**All Building Trades Covered  
Carpentry, Plumbing, Plastering,  
Decorating etc.**

**No Job Too Small**

**Free Estimates & Advice**

**Tel: 01480 450107/Fax**

**Mob: 07958 493555/07985 634569**

**A FREE TREATMENT  
AND FREE LAWN  
HEALTH CHECK**



**Now celebrating our  
19th year in business**

- An Independent Lawn Care Company
- Free Programme Proposal
- Creating healthy, vibrant lawns
- We rate 5/5 on all our reviews



**'for that lawn you've longed for'**

**ProLawnCare**

01480 812393

 @prolawncareuk

 facebook.com/prolawncareuk

email: [info@prolawncare.co.uk](mailto:info@prolawncare.co.uk) web: [www.prolawncare.co.uk](http://www.prolawncare.co.uk)



The Stukeley's Country Hotel

**HOMEMADE FOOD**

(all freshly made)

**NEXT QUIZ, SUN 2<sup>nd</sup> SEPT**

(all welcome)

**SPECIALS**

( on blackboards, come see)



phone 01480 456927, or email : enquiries@stukeleys.co.uk

website : <http://www.stukeleys.co.uk>

**Our Restaurant / Function Room**

We cater for : Weddings, Funerals, Birthday Parties, Other Special Occasions, and Local Business Requirements.

We can accommodate requirements, from full sit down 4 course meals, to hot or cold buffets.

**£5.00 off**

**MEAL FOR TWO OR MORE AT THE STUKELEY'S HOTEL**

Complete your details and present this voucher  
(USE FOR MAIN MEALS ONLY)

Name:.....

Address:.....

This voucher is not valid in conjunction with any other Special promotion. Valid thru sept 2018



# AGC SERVICES



Provides:



**Boiler Servicing & Installation**

**Help if you have Central Heating Problems**

**Electrical Installation & Fault Finding**

**Fully Gas Safe Registered & Corgi Electrical Registered**

**Domestic and Commercial**

**For Friendly Advice on Heating, Gas and Electrical Problems**

**Call Nino on:**

**01480 412483 or 07786 437126**

**Or Email [augustingaetano@talktalk.net](mailto:augustingaetano@talktalk.net)**



If you've been thinking about enjoying a great lawn this year – green, lush and weed-free, why not contact us today and let us bring your lawn to life.

We provide four seasonal treatments, as well as beneficial treatments to keep your lawn in tip-top condition - prices start from just £5\* per month.



Ask us about our annual plans, which allows you to both spread the cost and save up to 25%.



**GreenThumb**  
LAWN TREATMENT SERVICE

Simply call: 01234 709345 or visit: [greenthumb.co.uk](http://greenthumb.co.uk)   

\*Based on a lawn size of 40m<sup>2</sup>

## CREASEFREE IRONING SERVICE

### Need Help With Your Ironing?

I offer a professional Ironing Service. Local, Friendly and Reliable. Free Collection and Next Day Delivery. Same Day available for a small extra charge. Hangers supplied.

- ◆ Weekly
- ◆ Monthly
- ◆ Pre-holiday
- ◆ Post-holiday
- ◆ One off
- ◆ Illness
- ◆ Convalescence



**CALL TRICIA**  
**07731 049 206**  
to discuss your  
requirements  
and prices

## Paying too much for your glasses?

### Save Money - Buy Direct!

Visit our factory shop to see our fabulous range of Discount Prescription Eyewear

- Hundreds of frames to choose from, including designer frames from Ray-Ban, Polo Ralph Lauren, Oakley and PRADA
- Specialists in high and complex prescriptions
- Wide range of prescription sunglasses
- Full range of sports eyewear
- Save up to 75% on premium frames and lenses
- Fast turnaround

Official partner



POLO  
RALPH LAUREN



PRADA  
EYEWEAR



We are open 9am to 5pm Monday to Friday, and 9am to 1pm Saturday



**ALL EYES**  
SPECTACLE MAKERS

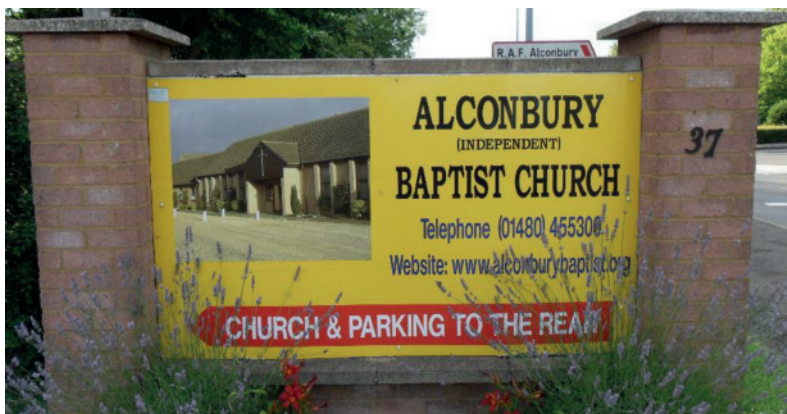
Call us

**01954 231545**

Visit our website

**www.all-eyes.co.uk**

20 Norman Way Industrial Park, Over, Cambridge CB24 5QE



## Alconbury Independent Baptist Church

A Gathering of Christians from different nationalities who know and love the Lord Jesus Christ our Saviour.

Sunday	Morning Worship (Children's Church for 5--11years)	10:45am
Sunday	Evening Service	6pm
Wednesday	Prayer Meeting	7-8.15pm
Saturday	Mens Breakfast (monthly)	8.30am

All are Welcome to any of these services!

We are located across the road from the main gate of RAF Alconbury. 37 Ermine Street, Lt Stukeley, PE28 4BE.

If you have any questions or want to find out more about the Christian Faith. Please contact Pastor G Marley. Tel: 01480-455300 email: [pastor@alconburybaptist.org](mailto:pastor@alconburybaptist.org)

'AIBC Passion for Christ Compassion for the World'  
[www.alconburybaptist.org](http://www.alconburybaptist.org) or find us on facebook

**THE CHURCH OF  
JESUS CHRIST OF LATTER DAY SAINTS.  
ERMINE STREET, GREAT STUKELEY,  
NEXT TO THE VILLAGE HALL.**

**Bishop Matthew Wade**

---

**Sunday Services**

10.00am to 11.15am Sacrament Meeting

11.15am to 12 noon Sunday School Classes for 12 years old and over.

11.15am to 1pm Primary For under 12 year olds, and Nursery for 18 month old to 3 years old.

12 Noon to 1pm Relief Society Meeting for Sisters 18 years and over(Women)

12 Noon to 1pm Priesthood Meeting for Brothers 18 years and over(Men)

12 Noon to 1pm Young Men and Young Women Classes for 12 to 18 year olds.

**All are welcome to come and join us.**

**Weekday Meetings**

Every Tuesday:

Youth Meetings for 12 to 18 year olds from 7.30pm to 8.30pm

First Wednesday of each month:

Sisters Meeting from 7.30pm to 9pm



## **GRACE FELLOWSHIP BAPTIST CHURCH**

**GOD LOVES YOU AND SO DO WE**

### **SUNDAY WORSHIP @ 11 AM**

We are an international group of believers worshipping Jesus together. We might be small, but we have big hearts for Jesus. Our mission is to Glorify God, Transform our Community, and Reach the World with the Gospel of Jesus Christ. We believe that God has called us love Him and to love one another. If you are looking for a church home, or just somewhere to worship on Sunday, we hope to see you. If you need more information, please check out our website @ [gfgg-baptist.org](http://gfgg-baptist.org).

The second Saturday of each month we host a men's fellowship breakfast. Please join us for a meal, discussion, and time of fellowship.

If there is any way we can help of if you need to speak to someone please call Pastor Eric Gren at 01832 293143 or email at [egren921@gmail.com](mailto:egren921@gmail.com).

# THE STUKELEYS CHURCH SERVICES



**ST BARTHOLOMEW'S  
GREAT STUKELEY**



**ST MARTIN'S GREAT  
LITTLE STUKELEY**

## September 2018

<b>2<sup>nd</sup></b>	<b>9.00 am</b>	<b>Holy Communion Rev Andrew Milton</b>	
<b>9<sup>th</sup></b>	<b>9.00 am</b>	<b>Family Service</b>	<b>9.00 am Service</b>
<b>16<sup>th</sup></b>	<b>9.00 am</b>	<b>Holy Communion Rev Andrew Milton</b>	
<b>23<sup>rd</sup></b>	<b>9.00 am</b>	<b>Morning Prayer</b>	<b>9.00 am Service</b>
<b>29<sup>th</sup></b>	<b>9.00 am</b>	<b>Songs of Praise Rev Andrew Milton</b>	

### WHO'S WHO IN THE CHURCHES

**Churchwardens**    **Harry Raby**  
**Brookfield Farm**  
**Great Stukeley**  
**01480 453269**

**Sue Pond**  
**Church Way**  
**Little Stukeley**

**Diane McGoff**  
**4 Seathwaite**  
**Stukeley Meadows**  
**Huntingdon PE29 6UY**  
**Tel: 01480 456238**

**Camilla Payne**  
**Old Rectory,**  
**Church Way**  
**Little Stukeley**

**Secretary**  
**the Parochial**  
**Council**            **Alan McGoff**  
**4 Seathwaite**  
**Stukeley Meadows**  
**Huntingdon**

**Camilla Payne of**  
**Old Rectory, Church**  
**Way**  
**Little Stukeley**

**Vice Chairman**  
**the Parochial**  
**Church Council**

**Jocelyn Kerr Of**  
**2 Mill Close**  
**Little Stukeley**  
**Tel: 01480 453213**  
**Tel: 01480 412674**

**Rector**                    **Revd Andrew Milton**

# Independent Financial Advice

01480 451 412

[www.bobhulstrom.tplip.com](http://www.bobhulstrom.tplip.com)



**We specialise in helping people aged 60 plus make the right decision in the following areas;**

- **Equity Release**
- **Impaired Annuities**
- **Pension Transfers**
- **Long Term Care**

- **Is this how you feel when faced with a financial decision?**
- **One which you do not really have the skill or knowledge to decide upon?**

**Don't leave one of the most important decisions of your life to luck; speak to the specialist  
NOT  
'Dom down the Pub' or  
'Beryl-Ann in the Hairdressers'!**

**We have 21 years experience and 1,000's of satisfied clients**

**Ring us on  
01480 451 412  
for a free interview  
to discuss your needs.**

# true potential

**3 Royal Oak Passage High Street Huntingdon Cambs PE29 3EA 01480 451 412**



# CENTRE FOR COMPLEMENTARY HEALTH



Osteopathy | Physiotherapy | Acupuncture | Chiropody | Alexander Technique | Clinical Psychology

With over 20 years experience working with local GP's, we're able to offer a range of the most relevant natural health and complementary therapies

**This includes treatment for:**

**back & neck pain • headaches • sports injuries  
foot problems • other musculoskeletal problems**

**T:** 01480 455221 **E:** info@CentreForCompHealth.com **W:** CentreForCompHealth.com  
6 Cambridge Road, Godmanchester PE29 2BW

Follow us on Google+ Follow us on Twitter Like us on Facebook

## Your Local Printer

- Business Cards
- Leaflets
- Flyers
- Forms
- Booklets
- Tickets
- And so much more...



[www.easiprint.biz](http://www.easiprint.biz)  
**01480 718270**

**FREE DELIVERY**

**easiprint**

23 Levellers Lane Ind Est, Eynesbury, St Neots, Cambs, PE19 2JL

## Alconbury weald decorating services



**01480 891961**



**07971 337581**

**r.bates01@btinternet.com**