



# September 2016



Best Floral Entrv



Trophies



Chives & Peppers



Vegetables



Floral Arrangements



Vegetables



Arts & Crafts Section



Buster & Co enjoying a Cream Tea

£5 for 2 classes with this ad.  
New customers only.



Incinerate up to 800 calories in an hour. Calories don't stand a chance this year!

Classes in St. Ives, Huntingdon, Great Stukeley and other areas.

Huntingdon Classes: Mon/Thurs 7PM Dance Mixx - Hartford Junior School  
Saturday - Great Stukeley Village Hall 9 AM Dance Mixx 10:15 AM Strength45

St. Ives: Mon 7PM Weds 7:30PM Dance Mixx - Westfield Junior School



 [fb.me/JazzerciseCams](https://fb.me/JazzerciseCams)



[@jazzerciscams](https://twitter.com/jazzerciscams)



(Tina) 01487 841811

# October 2016 Magazine Cut-off Date

Cut-off date for the October 2016 Stukeleys Parish Magazine is

## 9am Monday 19<sup>th</sup> September 2016

**\*\*\*\* Please do not be late \*\*\*\***

### FUTURE EVENTS

Mon 5 <sup>th</sup> Sep	Parish Council Meeting	7.30 pm	GSVH
Sat 10 <sup>th</sup> Sep	Mens Breakfast	9.00 am	Grace Fellowship
Sat 17 <sup>th</sup> Sep	Bingo - See flyer for more details		
Wed 28 <sup>th</sup> Sep	Community Coffee Morning	10.00 - 12.00 pm	GSVH
Sat 15 <sup>th</sup> Oct	Ceilidh & Hog Roast	7.30 pm	GSVH
Sat 15 <sup>th</sup> Oct	Harvest Supper	7.00 pm	LSVH
Sun 16 <sup>th</sup> Oct	Harvest Lunch	12.00 pm	St Bartholomews

Take a look at the Magazine website at [www.stukeleymag.co.uk](http://www.stukeleymag.co.uk)

Email to: Martyn at [martyn@stukeleymag.co.uk](mailto:martyn@stukeleymag.co.uk)

Post/drop in to: 7 Hill Close, Great Stukeley PE28 4AZ

Tel: 01480 432633 Mob: 07710 171924

Please include your phone number in case of queries.

Space in the magazine is limited, so articles should be about 300 words. This is to allow as many people as possible the opportunity to contribute to the magazine. It would be helpful if you could submit articles sized to an A5 page in Word or PDF.

We reserve the right to refuse an article, cut its length or hold it over to a later issue without notice.

**Please Note:** This magazine is published by Martyn Fox with administrative and financial support from The Stukeleys Parish Council. The opinions expressed are not necessarily those of the Editor or of the Parish Council

A charge is made to advertise in this magazine. All enquiries should be directed to Martyn Fox (Tel: 01480 432633) or Carole Pollock, the Clerk of the Parish Council (Tel: 01480 464817).

### This Month

Page 4:	Parish Council News
Pages 5-7:	Latest News From Alconbury Weald
Page 8:	Little Stukeley Village Hall
Page 9:	Thank You to The Parish Council
Page 9:	Stukeleys Village Hall Committee
Page 11:	Please Take Your Litter Home
Page 13:	Comment By Email to the Editor
Page 15:	The Stukeleys Heritage Group
Pages 15-18:	Great Stukeley Flower, Garden & Craft Show
Page 22:	Great Stukeley Village Hall Regular Activities



# The Stukeleys Parish Council News

The Parish Council does not hold an ordinary Parish Council Meeting in August, however an Extra-Ordinary Parish Council Meeting was held on the 15<sup>th</sup> August.

This meeting was well attended by 14 residents, 6 Parish Councillors, 1 County Councillor and the Clerk. A number of residents expressed grave concerns over planning application Alconbury Weald, Ermine Street – 16/01101/HZC and the storage of ISO Pentane (P5a Flammable Liquid – Category 1) and the nature of the industrial development on the site.

The following planning applications were considered by the Parish Council:

- i **Alconbury Weald, Ermine Street – 16/01445/REM** – Submission of reserved matters (access, appearance, landscaping, layout and scale) in respect of the construction of a primary electrical substation, new landscaping, highways works and ancillary works.  
After discussion it was resolved to recommend approval as the application was part of the overall infrastructure improvements for Alconbury Weald
- ii **Alconbury Weald, Ermine Street – 16/01329/REM** – Application for approval of appearance, access, landscaping, layout and scale in respect of the construction of 165 dwelling, pocket park, associated highways, landscaping and ancillary works.  
After discussion the Parish Council resolved to recommend approval of the application and to support the quality of the design & detailing.
- iii **Alconbury Weald, Ermine Street – 16/01101/HZC** – Hazardous Substance Consent: Proposed storage of up to 49 tonnes of ISO Pentane (P5a Flammable Liquid – Category 1).  
After discussion and consideration of objections raised by residents. It was resolved to recommend refusal as the Parish Council was concerned about the storage, processing and handling of hazardous substances on Alconbury Weald and the lack of information that has been provided to the Parish.
- iv **Alconbury Weald, Ermine Street – 16/01546/FUL** – Construction of a 13,287 sqm. Building comprising B1(A), B1(B), B1(C) and B8 uses, highways works, car parking, landscaping, lighting, minor ground remodelling and associated works.  
After discussion the Parish Council resolved to recommend approval of the application and to support the quality of the design & purpose.

## Next Scheduled Meeting:

**Monday 5<sup>th</sup> September 2016 at 7:30pm – Great Stukeley Village Hall**

Please check the website and notice board for notification of any Extra-ordinary Parish Council Meetings to be held.

A full set of Minutes and other Parish Council information are available at [www.thestukeleys-pc.gov.uk/](http://www.thestukeleys-pc.gov.uk/)

Carole Pollock, Parish Clerk/RFO to The Stukeleys Parish Council,  
5 Gore Tree Road, Hemingford Grey, Cambs PE28 9BP.  
Tel: 01480 464817 email: [clerk@thestukeleys-pc.gov.uk](mailto:clerk@thestukeleys-pc.gov.uk)

## Thank you and Farewell!!

As you may be aware this is my last Parish Council News Article as Parish Clerk/RFO for The Stukeleys Parish Council, may I thank all the parishioners, contractors and Councillors (past and present) for their kind support and encouragement during my time as your Clerk – you will all be missed.

**Carole Pollock**



## Latest news from Alconbury Weald

Many of you will have seen the scale of work and progress up at Alconbury Weald and we wanted to ensure local residents can keep up to speed with developments.

### New Homes



New homes at Alconbury Weald are off to a flying start with one in five of the Hopkins Homes plots reserved in the first few months. The first phase of the development will create 128 homes including two-bedroom coach houses and terraced houses, three bedroom terraced, semi-detached, link-detached and contemporary town houses as well as three to five-bedroom spacious detached family homes. First residents will begin moving in October 2017.

Site owners and developers Urban&Civic, also have two new housebuilders joining Hopkins Homes. Morris Homes have submitted a planning application for 165 executive and family homes and Redrow are drawing up plans for 200 homes as part of the first phase of the development. Both housebuilders are expected to start work on site by the end of the year, working alongside Urban&Civic's delivery of the infrastructure, landscaping and other facilities, with properties for sale from Spring 2017.

### Ermine Street Church Academy open for new academic year

Work is progressing well on the new primary school and head teacher Adrian Shepherd has a full staff team ready to welcome new pupils on Monday 5<sup>th</sup> September 2017. There will also be a series of open days for anyone that would like to look around the new school:

14<sup>th</sup> September at 10.00 am

23<sup>rd</sup> September at 2.00 pm

28<sup>th</sup> September at 6.00 pm

For more details see the website [www.erminestreetca.org.uk](http://www.erminestreetca.org.uk). The pictures below show finishing touches being made to the School and adjacent play area.



## Enterprise Campus

There has been lots of activity on the Alconbury Weald Enterprise Campus with MMUK, the flower and fruit specialists and iMET, a new training facility for manufacturing, engineering and technology both receiving planning permission and beginning construction on site. MMUK will be open in early spring 2017 and iMET will open to its first students in September 2017. Urban&Civic have also received permission for a new Mid-Tech building that will offer combined manufacturing, R&D and office space.



The iMET centre and Mid-Tech building

IKO, the insulation specialists and John Adams, a toy manufacturer and distributor have also lodged planning applications with Huntingdonshire District Council and hope to begin work towards the end of this year.

If anyone would like to meet up with the team or have a tour of the developing site, please do get in touch by email [rbritton@urbanandcivic.com](mailto:rbritton@urbanandcivic.com) or calling 01480 277203. We are conscious some residents have been nervous about processes that will be undertaken by IKO on the site, and their team have pulled together the following information which we hope will be useful. IKO are a well-established leading UK manufacturer, part of a family-run global company headquartered in Canada which specialises in waterproofing, roofing and insulation products. The UK division has three factories in Chesterfield, Matlock and Wigan and plans to build a new plant at the Alconbury Weald to manufacture and store PIR insulation boards. The new factory, a £30 million investment by IKO, will create up to 140 jobs for residents in the area and boost the local economy significantly. IKO has an excellent record for supporting its local communities.

Chris Collis, Site Manager for IKO Insulations, who lives in Northampton, comments: "These insulation boards are extremely energy efficient and are used in cavity walls, external walls, floors, roofs and more to make buildings more energy efficient and reduce heating bills and carbon emissions. IKO currently imports insulation boards from its manufacturing plants in France and Holland but has identified a gap in the

market for boards made in the UK. There are a number of other sites in the UK which manufacture PIR insulation and many other similar plants abroad.”

The planned factory will have the capacity to insulate approximately 40,000 homes a year which would have a major impact on helping the Government achieve the Climate Change Act’s current target to reduce carbon emissions by 80% by 2050. By producing here and creating employment, the factory will also help reduce the embedded energy and cost of importing materials from abroad.



CGIs of the proposed plant at Alconbury Weald, which will be situated at the far end of the site, at the north western end of the old runway.

IKO has a strong commitment to quality and health and safety, achieving the highest manufacturing and health and safety accreditation standards for environmental management and responsible sourcing of products on all three of its British plants. Alconbury would operate to the same standards.

“The PIR insulation foam boards pose no risk in storage or transport and there is no chemical waste in the manufacturing process,” adds Chris. “PIR foam is made using Pentane which is the least flammable of a group of substances that include butane and propane, which people use for gas-fired barbeques or caravan cookers. The group of substances is classed as extremely flammable. Using pentane in manufacture requires special precautions, and it is stored below ground and safely away from manufacturing.

“The development has been identified as a ‘lower tier’ (ie lower risk) Control of Major Accident Hazard Regulations (COMAH) site and all processes will be strictly controlled under rigorous legislation and guidance. IKO is notifying the Health and Safety Executive (HSE) of our intention to manufacture and apply for a Hazardous Substance Consent via the local Council planning authority. For comparison, an everyday petrol station - classed as higher tier/risk by COMAH - can hold between 40-68 tonnes per fuel type (so 270 tonnes depending on fuel type) while the site in its former airfield days, when it held ammunitions, would have been a higher risk/tier.

If you would like any additional information or to discuss any concerns further, please get in touch with Urban&Civic as IKO are happy to sit down and talk through their plans and processes.

**Rebecca Britton**



# LITTLE STUKELEY VILLAGE HALL



We haven't had any social events since last month's issue, however please see the calendar of events below for upcoming events, we'd be thrilled to see you at the Hall. As a further reminder since last month, please also note that the Stukeleys Flower Show is CANCELLED; if you are interested in forming a Stukeleys Flower Show Committee and running this event outside of the LSVH committee then please do contact me to discuss arrangements. We do intend to run the show next year assuming we can overcome the present difficulties.

## Hall Hire

If you wish to hire the Hall for your own events Philippa Larke (07711 786505 or [Plarke@hotmail.co.uk](mailto:Plarke@hotmail.co.uk)) would be pleased to hear from you and she'll talk you through the arrangements. You can also find us on Facebook by searching for Little Stukeley Village Hall and you can message Philippa from there too.

## Next Events

Our calendar of events is shown below, watch out for updates. I'd be delighted to hear your ideas for any future events and I look forward to seeing you in the Hall. Don't forget we run our Social Club Bar every Sunday 1PM – 2:30PM, it's a great way to meet your neighbours and fellow villagers. For membership of the Social Club please speak to Keith Winter (01480 450 656 [keithwinter2@sky.com](mailto:keithwinter2@sky.com)) who will be pleased to make the necessary arrangements.

<b>Monday</b>	<b>29<sup>th</sup> August Beer Festival – see Flyer for more details</b>
<b>Saturday</b>	<b>17<sup>th</sup> September Bingo – see Flyer for more details</b>
<b>Saturday</b>	<b>15<sup>th</sup> October Harvest Supper – see Flyer for more details</b>
<b>Saturday</b>	<b>5<sup>th</sup> November Bonfire and Fireworks</b>
<b>Saturday</b>	<b>19<sup>th</sup> November Social Club Supper Night</b>
<b>Saturday</b>	<b>10<sup>th</sup> December Christmas Dinner</b>

Future events will include another Burns Supper and a Summer Ball, probably in May 17; Matt Day is co-ordinating both of these events, if you'd like to help please contact me and I'll pass on your details. Next year will be our **Diamond Jubilee celebrating 60 years since the opening of our hall**. We've decided to theme the summer ball around this celebration.

Please don't hesitate to contact me if you have any ideas for other events or if you would like to get involved, you'd be very welcome and I'd be delighted to hear from you.

**David Robinson**  
**[davidarobinson@clara.co.uk](mailto:davidarobinson@clara.co.uk)**  
**07730312964**

Thank You

Thank you to the Parish Council for our lovely commemorative coins to celebrate the Queen's Birthday , they are really nice and we will look after them for years to come .

Pippa , Hugo , Alicia and Jonty

Thank You

On behalf of the Village Hall Management Committee, I would like to express our thanks to Steve Dighton and his team at J Breheny Contractors Ltd for carrying out much-needed repairs to the village hall car park. The pot holes have been filled and the gravel has been renewed, resulting in a much tidier appearance.

Nicola Oldfield  
Secretary, Great Stukeley Village Hall

# STUKELEY KARATE CLUB



## EVERY SATURDAY MORNING

**Develop: self-defence - Confidence - Self-esteem - Self-discipline-  
Co-ordination - Inner sprit - Fitness - Flexibility - Strength.**

**We operate an open door policy to training, with no joining fee.  
No bank debits, Just pay as you go.**

**Lessons held at Little Stukeley Village hall  
Saturday mornings 10 AM to 11 AM - ages 7 - 70  
Additional lessons available within 3 mile radius of Stukeley**

**For further information and book your first lesson contact:**

**Tel: 07901206369**

**Or 07530402674**

**Email [senseikarate@yahoo.com](mailto:senseikarate@yahoo.com)**

## For Rotary - our Bus Trip to Dorset

By Philip Hobson

On a glorious unusually sunny morning in early May,  
Heading South in a nostalgic Rotarian way,  
Our demure and beautiful land told an unusual story,  
Lying back and showing all her feminine glory,  
Private crevices and bosky nooks,  
Mossy rivulets, all good looks,  
Natural assets on rare display,  
Pleasant pleasaunce every way,  
Our dear England country held her sway,  
In dearest modesty,  
Of her delights as we rarely know,  
And demure but delightful display,  
The sweetest and the best  
It's ours we know  
What's more to say!

---



The Rotary Club of Huntingdon  
presents

# AN EVENING WITH the Renowned Author and Raconteur GERVASE PHINN



**Saturday**  
**September 17<sup>th</sup>, 2016**  
**at 7.30 p.m.**  
Hinchingsbrooke  
Performing Arts Centre  
Huntingdon

**Tickets: Adults £10**  
**Students (under 25) £5**

Tickets available from Rotary Club members  
or from [peterdownes42@aol.co.uk](mailto:peterdownes42@aol.co.uk)

Also by telephone 01480 375678 (9 a.m. to 3 p.m.)  
or at [www.ticketsource.co.uk/hinchingsbrookepac](http://www.ticketsource.co.uk/hinchingsbrookepac)  
and at the door on the night (if not sold out)

*This event will raise funds to enable Huntingdon Rotary  
Club to support a large primary school in Kenya*





### **PLEASE TAKE YOUR LITTER HOME**

Where has the pride gone in our Village Community we ask ourselves?

This rubbish was picked up on a two mile walk down Waterloo and Brookfield lanes onto Ermine Street and back into Park View by Helen, Carol, David and Ray some of the Stukeley Wombles.

We know the litter is not necessarily dropped by villagers but there are an awful lot of people that walk the same route every day that we walked that could help keep our village and its surrounding area clean.

The loop between Owl End and Green End and the walk down to the Business Park is just as bad.

If everybody that walked these routes picked up one or two pieces of litter our village would be a much prettier place.

Many thanks

**The Stukeley Wombles.**

## **MAN WITH VAN**



Huntingdon based.

House/Garage Clearance.

Student relocation.

Delivery and collections, from single to bulky items.

Friendly and reliable service. Driver helps load/unload.

For Quotes please email the Postcode to Postcode and details of work.

Email: [Huntingdonvan@outlook.com](mailto:Huntingdonvan@outlook.com)

Tel: Pete Tel: 07497 701 180

GREAT STUKELEY VILLAGE HALL COMMITTEE  
INVITES YOU TO JOIN US FOR A



## AND HOG ROAST

**On Saturday 15<sup>th</sup> October at 7.30pm**

**At Great Stukeley Village Hall**

**Live band and meal included for £15**

**Tickets are available from Carol Buttercase 01480 458089 or Helen & David Silsby 01480 459543 or Jan Sly 01480 450197**

**There will be a raffle but no licensed bar so bring your own drinks. All proceeds to the Village Hall.**

## Comment by Email to the Editor

### Considerate



About a month ago I saw an elderly gentleman on his hands and knees cleaning off the seat by the Village Hall; it is now fully restored and looks brilliant. I'm afraid I don't know who the gentleman was but I think it would be appropriate for us to give due recognition and appreciation for his consideration, hard work and contribution to the village.

### Inconsiderate



And so to the **inconsiderate**. I have commented on this subject previously but clearly had no influence on some of those involved. The attached photo was taken on 10 August between the Great Stukeley Village Hall and Church Road. Yes, I know we live in the country and horses have to do what horses do, but if a dog owner left a fraction of this mess on the pavement (or anywhere else for that matter) the roof would fall in on its owner. I know it is not practicable for horse riders to carry a bucket and spade with them, but there is nothing to stop them returning to the scene and clearing up the mess once the horse has been put to bed. I (*and I'm sure most pedestrians and drivers*) give every consideration to horses and their riders and it would be nice to see that consideration reciprocated. I know at least

one person who uses this route almost daily in a motorised chair and it cannot be very pleasant when horse dung contaminates the wheels; moreover, manoeuvring so close to a busy road in order to avoid the mess could prove fatal. So, come on - all horse riders, clear up after your horse.

**Martyn Redmore**  
**Great Stukeley**



# **Community Coffee Morning**

**Wednesday 28<sup>th</sup> Sept 2016**

**10.30 – 12.00**

**At Great Stukeley Village Hall**

**(and every last Wednesday  
26 Oct & 30 Nov)**

**The Stukeleys WI are holding a community coffee morning every last Wednesday of the month to raise money for Young Carers Huntingdon and The Stukeleys WI.**

**Do come and join us. Children are welcome – we have a kids' corner to keep them amused.**

# THE STUKELEYS HERITAGE GROUP

The Group's annual trip to historic Norwich on the 17th August was on a lovely sunny day. Our coach driver, Franklin, gave us a nice steady ride which took just an hour and a half, so we had a good amount of time to explore shops, castle, art gallery museums or cathedral - or just to wander around - it was very much a "do what you like" trip.

Thanks to all those who supported the Group; it was pleasing that we had a virtually full coach - with 42 of us on board.

**Michael Monk,  
Convenor Stukeleys Heritage Group**

---

## GREAT STUKELEY, FLOWER, & CRAFT SHOW 2016

Well another flower show has been and gone. How quick time goes by! On behalf of the Flower Show Committee, I would like to thank the people of Great Stukeley for their support at the show on 6<sup>th</sup> August. To the Committee and Volunteers who helped set up the hall the day before and clearing up after the show, a big thank you to those who gave their time at the show on Saturday. To all the Judges, Section Sponsors, helpers on the day, people who gave donations, either in money or prizes for the raffle and tombola whose generosity is second to none.

Another thank you goes to all the people who took the time to enter, as usual everything was its usual high standard, and despite having only 342 entries the tables didn't look bare. Was nice to see some new faces entering, so hopefully there will be more of your next year.

Presentation of the trophies this year was made by Sue Parkin, former Chairperson of the Parish Council, and I would like to congratulate all those trophy winners. And lastly a big thank you goes to the Committee for their help and support once again this year. You are a sterling team.

Don't forget the flower show will be on the 5<sup>th</sup> August next year so make a note, and hope to see you there.

**Iain Shaw  
Chairman of the Flower Show**

GREAT STUKELEY FLOWER, GARDEN & CRAFT SHOW 2016

	FIRST	SECOND	THIRD
A1 POTATOES	DAVID SILSBY	MRS RYAN	IAIN SHAW
A2 SHALLOTS	MARTIN STEPHENSON	MRS RYAN	
A4 ONION SETS			
DRESSED	MARTIN STEPHENSON	SYLVIA REYNOLDS	DAVID SILSBY
A5 CHILLIES/PEPPERS	CLIVE FIELD	MRS RYAN	IAIN SHAW
A6 CARROTS	DAVID SILSBY	PAT OAKS	IAIN SHAW
A7 BEETROOT	DAVID SILSBY	SYLVIA REYNOLDS	MARTIN STEPHENSON
A8 VEG MARROW	DAVID SILSBY	MARTIN STEPHENSON	MARTIN STEPHENSON
A9 RUNNER BEANS	MARTIN STEPHENSON	PAT OAKS	IAIN SHAW
A10 FRENCH BEANS	MARTIN STEPHENSON	MRS RYAN	MRS RYAN
A11 COURGETTES	MRS RYAN	MARTIN STEPHENSON	ALEX FACEY
A12 PEAS	MARTIN STEPHENSON	DAVID SILSBY	
A13 CABBAGE	DAVID SILSBY		
A14 LETTUCE	MARTIN STEPHENSON		
A15 CUCUMBER INDOOR	IAIN SHAW	DAVE HOLOHAN	DAVE HOLOHAN
A16 CUCUMBER OUTDOOR	DAVID SILSBY		
A17 TOMATOES INDOOR	SYLVIA REYNOLDS	SYLVIA REYNOLDS	MRS RYAN
A18 TOMATOES OUTDOOR	MRS RYAN	ALEX FACEY	MRS RYAN
A19 TOMATOES CHERRY	IAIN SHAW	DAVID SILSBY	SUE PARKIN
A20 CULINARY HERBS	MARTIN STEPHENSON		
A21 VEG COLLECTION	DAVID SILSBY	MARTIN STEPHENSON	
A22FRUIT	MRS CANNON		
A23 RHUBARB	DAVID SILSBY	CLIFE FIELD	MARTIN STEPHENSON
A24 LONGEST RUNNER BEAN	MARTIN STEPHENSON		
A25 UNUSUAL VEGETABLE OR FRUIT	MARTIN STEPHENS		
A26 ANY OTHER VEG	DAVID SILSBY	MARTIN STEPHENSON	
A27 SQUASH/PUMPKIN	MARTIN STEPHENSON	CLIVE FIELD	CLIVE FIELD
B1 DAHLIAS DECORATIVE	IAIN SHAW	MARTIN STEPHENSON	IAIN SHAW
B2 DAHLIAS POM POM	DAVID SILSBY	MARTIN STEPHENSON	IAIN SHAW
B3 DAHLIAS CACTUS	MARTIN STEPHENSON	IAIN SHAW	IAIN SHAW
B4 GARDEN FLOWERS	MARTIN STEPHENSON	IAIN SHW	IAIN SHAW
B5 FLOWERING SHRUBS	IAIN SHAW	ALEX FACEY	IAIN SHAW
B6 FLOWERING ANNUALS	IAIN SHAW	IAIN SHAW	
B7 GLADIOLI	SHIRLEY BERRILL	SYLVIA REYNOLDS	SHIRLEY BERRILL
B8 SWEET PEAS ANNUAL	IAIN SHAW		
B9 ROSES	BUSTER EVANS	BUSTER EVANS	
B10 SUNFLOWER	MARTIN STEPHENSON		
B11 SINGLE ROSE	BUSTER EVANS	VILLAGE HALL	TOM COOK
B12 NTIRRHINUMS	MSRTIN STEPHENSON	MARTIN STEPHENSON	
B145 POT PLANTFOLIAGE	IAIN SHAW	DAVID SILSBY	
B15 POT PLANT FLOWERING	DAVID SILSBY	IAIN SHAW	IAIN SHAW
B16 POT PLANT FUCHSIA	SYLVIA REYNOLDS	IAIN SHAW	
B17 POT PLANT GERANIUM	MARTIN STEPHENSON	SUE PARKIN	IAIN SHAW
B19 FRESH FLORAL ARR	SHEILA STEPHENSON	JAN SLY	ANGELA GRIEF
B20 RIO OLYMPICS ARR	SHEILA STEPHENSON	ANGELA GRIEF	MARION BROCKETT
B21 BUTTONHOLE	SHAILA STEPHENSON	SHIRLEY BERRILL	JAN SLY
B22 CORSAGE	SHEILA STEPHENSON	SHIRLEY BERRILL	JAN SLY
B23 FOLIAGE ARR	ASNGELA GRIEF	SHEILA STEPHENSON	JAN SLY

B24 MUG ARR (MEN)	KEN PARKIN	IAN SLY	DAID SILSBY
B25 UNUSUAL CONTAINER	HAZEL PAULEY	JAN SLY	ANGELA GRIEF
B26 QUEEN'S 90 <sup>TH</sup> B'DAY	ANGELA GRIEF	SHEILA STEPHENSON	MARION BROCKETT
B27 FRANE ARR,	JAN SLY	ANGELA GRIEF	SHEILA STEPHENSON
C1 VICTORIA SPONGE	JAN SLY	KEN PARKIN	JAN TILDEN
C2 TREACLE TART	JAN SLY		
C4 MENS DOCKEY CAKE	KEN PARKIN	IAN SLY	KEN PRKIN
C5 SAUSAGE ROLLS	KEN PARKIN	KEN PARKIN	RICHARD FORD
C6 ROUND SHORTBREAD	- -	IRENE HOLOHAN	IRENE HOLOHAN
C7 FLAPJACKS	-	JAN SLY	
C9 SCONES	JAN TILDEN	MRS OAKES	
C11 MERINGUES	RICHARD FORD		
C12 HOME MADE JAM	MRS OAKES	DAVID SILLSBY	
C14 HOME MADE CHUTNEY OR PICKLE	JAN TILDEN		DAVID SILSBY
D1 HANDKNIT GARMENT	ANNA CHILDS	SHEILA STEPHENSON	ANNA CHILDS
D2 BABY CLOTHES	ANNA CHILDS	MARION BROCKETT	JAN SLY
D3 SCARF	MARION BROCKETT	ANNA CHILDS	JAN SLY
D4 EMBROIDERY/ CROSS STITCH/TAOESTRY	BUSTA CHARTER	MARION BROCKETT	
D5 CUSHION	MARION BROCKETT	SHEILA STEPHENSON	
D6 CROCHET	ANNA CHILDS	ANNA CHILDS	JAN SLY
D7 SOFT TOY	MARION BROCKETT		
D8 DRESSED DOLL	MARION BROCKETT	AANNA CHILDS	
D9 NEW FROM OLD	MARION BROCKETT	LORNA BENSLEY	MARION BROCKETT
D10 GET WELL CARD	SHIRLEY BERRILL	SHIRLEY BERRILL	
D11 THANK YOU CARD	SHIRLEY BERRILL	SHIRLEY BERRILL	SHIRLEY BERRILL
D13 NEEDLEWORK/ PATCHWORK/QUILTING	MARIA FIELD	MARIA FIELD	ANNA CHILDS
D14 DRAWING	KEN PARKIN	PHILIP HOBSON	KEN PARKIN
D15 PAINTING	MARIA FIELD	PHILIP HOBSON	ANGELA GRIEF
D16 LADIES HANDICRAFTS	LORNA BENSLEY	MARION BROCKETT	
D17 GENTS HANDICRAFTS	BUSTER EVABS	TREVOR WALDOCK	BUSTER EVANS
D18 TRAVEL PHOTO	SHEILA STEPHENSON	CAROLE HARRIS	CAROLE HARRIS
D19 LANDMARK PHOTO	CAROLE HARRIS	DAVID SILSBY	MARION BROCKETT
D20 BEGINNING 'B'	DAVID SILSBY	IRENE HOLOHAN	HAZEL PAULEY
D21 CLOUDS	IRENE HOLOHAN	DSVID SILSBY	SHEILA STEPHENSON
D22 WINTER PHOTO	CAROLE HARRIS	IRENE HOLOHGAN	CAROLE HARRIS
D23 '3' PHOTO	MARION BROCKETT	DAVID SILSBY	SHEILA STEPHENSON
D24 EMOTIONS PHOTO	IRENE HOLOHAAN	SHIRLEY BERRILL	DAVID SILSBY
E1a ART	ABBIE FACEY		
E1b ART	JESSICA PARRY	ALICIA JENKINS	ALEX JENKINS
E2 WOODEN SPOON	ABBIE FACEY		
E3 FACE ON PLATE	ABBIE FACEY		
E4 COOKERY	ABBIE FACEY		
E5 CONSTRUCTIONS	LAUREN ELLIOTT	LAUREN ELLIOTT	ALICE JENKINS
E6 GROW CRESS	IZZY FACEY	RILEY SLY	
E7 SELFIE PHOTO	ABBIE FACEY		
E8 COVER PICTURE	AMMELIA DANDO		
BEST KEPT SPRING GARDEN	IAIN SHAW		
BEST KEPT GARDEN	HELEN & DAVID SILSBY		
BEST CONTAINER	IAIN SHAW		
BEST HANGING BASKET	DAVE & IRENE HOLOHAN		



GREAT STUKELEY FLOWER, GARDEN & CRAFT SHOW  
CUP WINNERS 2016

MOST POINTS HOME PRODUCE	KEN PARKIN
THREE ROSES	SHEILA STEPHENSON
BEST FLORAL ARRANGEMENT	ANGELA GRIEF
MOST POINTS FLOWER SECTION	IAIN SHAW
MOST POINTS FLORAL ARRANGEMENTS	SHEILA STEPHENSON
MOST POINTS VEGETABLE SECTION	MARTIN STEPHENSON
STEVE HURST CUP-BEST POT PLANT	SYLVIA REYNOLDS
SWEET PEA TROPHY	IAIN SHAW
EVA WENDHOLT SHORTBREAD TROPHY	-----
ART & CRAFT CUP	MARION BROCKETT
BETTY WOOLLCOTT TROPHY FOR DRESSED DOLL/SOFT TOY	MARION BROCKETT
EMBROIDERY TRAY (MOST POINTS SEC.D4)	NITA CHARTER
ART/DRAWING CUP – IN MEMORY OF PHYLLIS TRUNDLE	MARIA FIELD
BEST SINGLE PHOTOGRAPH	DAVID SILSBY
MOST POINTS PHOTOGRAPHY CAROLE HARRIS/IRENE HOLOHAN/DAVID SILSBY	
MARK HAYWARD TROPHY UNDER 10 YEARS)	DEBBIE FACEY
MARK HAYWARD TROPHY (11-16 YEARS)	JESSICA PARRY
PLATE FOR MOST POINTS CHILDREN’S SECTION	DEBBIE FACEY
TROPHY FOR YOUNGEST EXHIBITOR	RILEY SLY
FAMILY TROPHY	THE FACEY FAMILY
BEST KEPT SPRING GARDEN IN GT STUKELEY	IAIN SHAW
BEST KEPT GARDEN IN GT STUKELEY	HELEN &DAVID SILSBY
TROPHY FOR BEST CONTAINER	IAIN SHAW
TOM BUTTERCASE TROPHY/BEST HANGING BASKET	DAVE&IRENEHOLOHAN
LADIES TROPHY (SECTIONS B, C, D)	MARION BROCKET
BEST ENTRY IN SHOW	MARIA FIELD
MOST POINTS IN SHOW	MARTIN STEPHENSON

## THE BRICK LANE MUSIC HALL: *BEST OF BRITISH* - Tuesday 4th October 2016

An old Church designed by a French architect in the beautiful style of a French chateau is the very first thing that attracts you upon your arrival at THE BRICK LANE MUSIC HALL.

*THE BEST of BRITISH* is very entertaining with Vincent Hayes taking the lead helped along in laughter by Andrew Robely and William Byrne.

The *English High Tea* served during the intermission includes a three course spread with home-made sandwiches, pastries, cakes and scones. All the staff at BRICK LANE are very attentive and courteous making it a very happy place. The very talented cast clearly enjoy every moment and their enthusiasm and love of what they do really does carry the audience along.

COME JOIN US on Tuesday 4th October 2016 when we visit BRICK LANE with a PROMPT departure from the Great Stukeley Village Hall at 11.00am. *THE BEST of BRITISH* show, celebrating British Talent from the Golden Age of British Television, stage and screen starts at 2.00pm with a door opening time of 1.15am. I am able to bring this to you at a price per person of just £54.50 due to a very special arrangement with our coach company. This great price includes your coach journey to and from Silvertown, a tip for your coach driver, the *English High Tea*, and an incredible music hall show.

**STRICT DEADLINE: THURSDAY 8TH SEPTEMBER 2016**

**Mary Alleyne-James  
Organizer, Tel 01480.433.954**

---

## **CHRISTMAS LIGHTS and SIGHTS, CARVERY CLUB LUNCH and LONDON CHRISTMAS SHOPPING *Tuesday 6th December 2016* ONLY A FEW PLACES LEFT-PLEASE CALL!**

I have just a few places left for this exciting CHRISTMAS VISIT to LONDON on Tuesday 6th December 2016. If you would like to join in the Christmas cheer please give me a phone call without delay.

We are very lucky to have our favourite *Blue Badge Holder Guide*, Jeanie Carmichael, with us for our exciting Christmas visit to London. Jeanie's LIGHTS and SIGHTS tour around the Capital will be very informative.

On this trip we will be able to see the CHRISTMAS LIGHTS and Jeanie will have made a detailed survey of all the shop windows to pick out the very best for our tour.

It is not just the CHRISTMAS LIGHTS as many of our landmark buildings are now beautifully floodlit at night all along the river and the sparkling lights on the bridges are reflected on the Thames. This will be a lovely evening - just right to kindle our CHRISTMAS spirit.

The price per person for this super LONDON CHRISTMAS VISIT is £45.50. This includes your coach trip to and from London, the services of our *Blue Badge Holder Guide*, a delicious two-course Carvery lunch at *THE STRAND PALACE HOTEL* (drinks-not included!). In addition, this covers your visit to the *WESTFIELD STRATFORD MALL* and the *SOUTH BANK CHRISTMAS MARKET* and tips for our coach driver and *Blue Badge Holder Guide*.

This is a very special and enjoyable Christmas Gift for yourself and your family and friends...SO DO JOIN US!

**Mary Alleyne-James  
Tour Organizer, Tel 01480 433 954**

## **NEW - THIS COUNTRY CALLED ENGLAND A THAMES CRUISE FROM WINDSOR to RUNNYMEDE**

**Thursday 18th May 2017**

This wonderfully exciting day trip on Thursday 18th May 2017 will begin where ENGLAND began, at Kingston-upon-Thames.

We start our day meeting our coach at the Great Stukeley Village Hall at 08.15am for a PROMPT departure at 08.30am. We meet our well informed *Blue Badge Holder Guide* for refreshments in the centre of Kingston-upon-Thames at 10.30am. After our morning break we will take a short walking tour of this beautiful town.

Kingston-upon-Thames is an ancient market town where our Saxon Kings were crowned. Kingston as it is also known, is situated just 10 miles southwest of Charing Cross and is one of the major metropolitan centres identified in the London Plan. Kingston, was part of a large ancient parish in the county of Surrey and became a borough in 1853. From 1993 Kingston has been the location of Surrey County Hall, extraterritorially in terms of local government administration, as Kingston became part of Greater London in 1965.

One of the most unusual sights in Kingston is *Out of Order*, by David Mach. A sculpture in the form of twelve disused red telephone boxes that have been tipped up to lean against one another in a domino arrangement. This work was commissioned in 1988 as part of the landscaping for the new relief road.

THIS COUNTRY CALLED ENGLAND day trip will include tea/coffee & biscuits, the services of our *Blue Badge Holder Guide*, the coach there and back and an incredible TWO-HOUR, three-lock cruise downstream on the Thames from Windsor to Runnymede. The cost per person for all this is a great price of just £47.50 per person.

Please call me as soon as possible if you would like to join this super trip.

**Mary Alleyne-James**

**Tour Organizer Tel 01480 433 954**

## **THURSFORD'S CHRISTMAS SPECTACULAR 2016**

**Sunday 20th November 2016**

In *SEPTEMBER* the auditions take place for the dancers in West London. Usually there are about 20 places to fill every year and some 200 talented young ladies fill the studio looking for a role in the very highly rated CHRISTMAS SPECTACULAR. *SEPTEMBER* also sees the final full management team meeting in London to run through the whole show before rehearsals begin. It is amazing that a Norfolk backwater can be such a magnet to these talented people used to working in the West End.

Back in Norfolk bare leafed trees are cut and sprayed with paint and thousands of lights are hung. Local interviews are held for the extra 100 staff-usherettes, stewards and shop assistants needed for the SPECTACULAR, the gift shops and restaurants. Party bookings are sending their payments for tickets ordered in January and the Thursford office staff work night shifts to cope with the heavy workload. The Thursford Team is also busy putting together the biographies and photographs needed for the Programme which is a sizable task with the 100 strong cast living in both the United Kingdom and Abroad.

We are all looking forward to this year's Thursford visit which will take place on Sunday 20th November 2016 with a departure from the Great Stukeley Village Hall at 10.00am PROMPT. This year's price is £53.50 per person which includes SUPERB De Luxe STALL SEATS in rows D/E/F and H between numbers 01 and 12 and 20 through 29, your coach journey to and from Norfolk and a tip for your coach driver.

**Mary Alleyne-James**

**Organizer Tel 01480 433 954**



## St Bartholomews Harvest Lunch

Sunday 16th October 12noon for 12.30pm  
Gt Stukeley Village Hall

Tickets £10 Children £7  
Raffle

Please ring Nancie Raby on 453269



## Bingo

Saturday 17th September 6.30 pm

at

Little Stukeley Village Hall.

## Yoga with Jane

Hatha Yoga for mixed ability

Thursday evenings 7.15-8.45 pm  
Little Stukeley Village Hall

Tuesday evenings 7.30-9.00 pm  
Brampton Primary School

Ongoing courses – book today!  
£35 for a block of 5 sessions



Relax, Stretch, Strengthen

Become flexible and mindful

Contact Jane on 07958 757076 for  
details and to book

[jane.clark@virgin.net](mailto:jane.clark@virgin.net)  
[www.yogawithjane.co.uk](http://www.yogawithjane.co.uk)



## Harvest Supper

Saturday 15th October  
7 for 7.30 pm

at Lt Stukeley Village Hall  
Bar and Raffle

Tickets £10  
from  
Jocelyn Kerr Tel 453213



<b>GREAT STUKELEY VILLAGE HALL – REGULAR ACTIVITIES</b>		
Time	Activity	Organiser
<b>Mondays</b>		
7-10pm	Bridge	Joan Gray 455773
5-7pm 7-10pm	<b>Great Stukeley Table Tennis Club</b> Junior Table Tennis Senior Table Tennis	Coach Alex 07961 192844
<b>Tuesdays</b>		
9.30-10.20am	<b>Pilates</b> (term time only)	Zara Walters 07917 755512
7.30-9pm	<b>Slimming World</b>	Adrian Flintoft 07826 555255
<b>Wednesdays</b>		
10.30-12.00 last Wed	<b>Community Coffee Morning</b>	Jan Sly 450197
2-4pm 4 <sup>th</sup> Wed	The Craft Club	Joan Gray 455773
7.30-10pm 2 <sup>nd</sup> Wed	<b>The Stukeleys Women’s Institute</b>	Jan Sly 450197
<b>Thursdays</b>		
10-12	Badminton (private booking)	
5-7pm 7-10pm	<b>Great Stukeley Table Tennis Club</b> Junior Table Tennis Senior Table Tennis	Coach Alex 07961 192844
<b>Fridays</b>		
2-4pm	Bridge	U3A
<b>Saturdays</b>		
9.15 10.15	<b>Jazzercise</b> Dance Mixx Strength 45	Dana Rowe 07760 824609
1-5pm	<b>Great Stukeley Table Tennis Club</b> All ages	Coach Alex 07961 192844
<b>To book GSVH please call Hilma on 454058</b> <b>(please leave a message and she will return your call)</b> <b>The activities in bold welcome new members</b>		



# The Stukeley Country Hotel

## DATES FOR YOUR DIARY

Sunday 25<sup>th</sup> September Quiz night 7.30pm for 8pm start

## LIVE MUSIC

check the A board for next event



**SUNDAYS ; ROASTS** from £8.25

**EVERY EVENING ; Rump steak**

**with your choice of Starter or Dessert**

phone 01480 456927, or email : [enquiries@stukeleys.co.uk](mailto:enquiries@stukeleys.co.uk)

website : <http://www.stukeleys.co.uk>

### **Our Restaurant / Function Room**

We cater for : Weddings, Funerals, Birthday Parties, Other Special Occasions, and Local Business Requirements.

We can accommodate requirements, from full sit down 4 course meals, to hot or cold buffets.

Please ask for details

**ANYBODY INTERESTED IN HAVING A TABLE AT A HARVEST CRAFT FAIR**

**PLEASE CONTACT PAULA at the STUKELEY COUNTRY HOTEL**

**10 o/o OFF**

**MEAL FOR TWO OR MORE AT THE STUKELEY'S HOTEL**

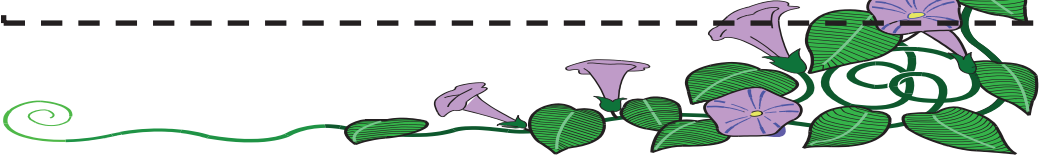
*Complete your details and present this voucher  
(USE FOR MAIN MEALS ONLY)*

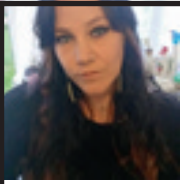
Name:.....

Address:.....

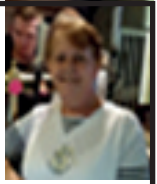
This voucher is not valid in conjunction with any other

Special promotion. Valid until September 2016





Victoria  
Licensee



Averil  
Manager

## THE THREE HORSESHOES

Friendly family pub with great atmosphere  
plus private party bookings available.

### Opening Times

Monday 3.30pm until 11pm

Tuesday to Saturday 12 noon until 11pm

Sunday 12 noon until 10.30pm

Every month a live band or disco/karaoke 7pm till late

Keep an eye on the board outside the pub for more details

Victoria 07730579725 - Averil 07804775746

missv\_lover@yahoo.co.uk also available on facebook



\*\*\* Our Pool Team needs more players \*\*\*



If you play Pool contact Victoria by phone or drop into the pub.



07910 569345

## Esme's Sewing Services

### Esmeralda

All sewing and alterations undertaken  
Just email or call for a quote  
Repairs, alterations, zips, wedding dresses, curtains,  
jackets, trousers and more  
esmesewing@yahoo.co.uk



## A. DYOS LTD

Multi Trade Handyman Services  
Family Run Business Established Over 25 Years

All Building Trades Covered

Carpentry, Plumbing, Plastering, Decorating etc.  
No Job Too Small, Free Estimates & Advice

Tel: 01480 450107 / Fax

Mob: 07958 493555 / 07985 634569

Email: dyos3@hotmail.com

# Need glasses?

**Buy direct save up to 75%**

(Complete prescription specs)

Single vision from just £9\* ~Bifocals

from £39\* ~Varifocal from £59\*

Prescription sunglasses from £49\*

High/complex prescription specialist

Premium frames & lenses save ££

Reglaze your own specs\* save ££

Specs for all sports & trades

FREE NHS specs\*

Large selection of specs frames

Specs repairs & emergency supply\*

Excellent customer service, fully

guaranteed specs at internet prices

Supplier to Eye Clinic & High  
Street Opticians since 1987



## ALL EYES Specs Makers

20 Norman Way Ind. Park  
Over, Cambridge CB24 5QE  
Mon - Fri (9am - 5pm)

Tel: **01954 231545**

Mobile: 07824 706969

(Please ring for an appointment)

[www.all-eyes.co.uk](http://www.all-eyes.co.uk)

\*T & Cs apply, for customers aged 16 and over.



## Ballroom & Latin American Dance Classes

**Adults :** Monday evenings : Bluntisham Village Hall

Thursday evenings : Alconbury Memorial Hall

Friday evenings : Houghton & Wyton Memorial Hall

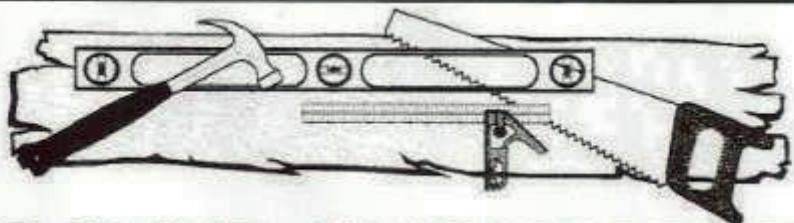
\*\*\*\*\*

**Children :** Sunday afternoons : Houghton & Wyton Memorial Hall

For further information please  
email [enquiries@stepbystepballroom.co.uk](mailto:enquiries@stepbystepballroom.co.uk)  
or telephone 07876 130037  
[www.stepbystepballroom.co.uk](http://www.stepbystepballroom.co.uk)







# DAVID HUMPHREY

Carpenter & Joiner

21 Lake Way, Stukeley Meadows, Huntingdon, Cambs PE29 6SU

VAT Registration No 759 633 89

Small works  
Fitted kitchens  
Loft conversions  
Windows & Doors  
General property repairs

Call today for a free quotation.

Tel: 01480 432275 Mob: 07788 428580 Fax: 01480 451566

## The UK's No.1 Lawn Care Company



- Scarification
- Aeration
- Lawn Fertilising
- Weed Control
- Moss Control
- Water Conserver
- Pest and Disease Management



GreenThumb has a variety of treatment programmes to suit your pocket that include our traditional 'pay-as-you-go' service and our new, pay monthly, Direct Debit programmes, where you can save up to 25% annually.

Our treatments start from £5 per month, that's cheaper than D-I-Y and without the hassle!

Call your local branch today for a FREE lawn analysis and no obligation quote.

0800 0111 222

**GreenThumb**  
LAWN TREATMENT SERVICE



Find us online at: [www.greenthumb.co.uk](http://www.greenthumb.co.uk)



TRANSFORM  
YOUR CURRENT  
**COOKER**  
IN AS LITTLE AS  
**2 HOURS**

FREE  
Replacement  
Bulbs  
Service

"Better Than New"  
"Absolutely Thrilled"

Easy  
CALL, QUOTE  
& BOOK

"Fantastic Service"  
"Clean & Shiny"

OvenGleamers  
SATISFACTION  
GUARANTEE  
SINCE 2004

"Definitely Use You Again" "You Certainly Live Up To Your Name" "Cleaner Than When First Bought"  
Just a few of the wonderful comments that our clients have said recently.

Our OvenGleamer will come into your home and professionally degrease and remove any burnt on carbonised food from your Oven, Cooker, AGA or Range. Would you like an "as new-looking" cooker again?



Call us NOW **01223 750909**

# AGC SERVICES



Provides:

Boiler Servicing & Installation

Help if you have Central Heating Problems

Electrical Installation & Fault Finding

Fully Gas Safe Registered & Corgi Electrical Registered

Domestic and Commercial

For Friendly Advice on Heating, Gas and Electrical Problems

Call Nino on:

**01480 412483 or 07786 437126**

Or Email [augustingaetano@talktalk.net](mailto:augustingaetano@talktalk.net)



**THE CHURCH OF  
JESUS CHRIST OF LATTER DAY SAINTS.  
ERMINE STREET, GREAT STUKELEY,  
NEXT TO THE VILLAGE HALL.**

**Bishop Matthew Wade**

---

**Sunday Services**

10.00am to 11.15am Sacrament Meeting

11.15am to 12 noon Sunday School Classes for 12 years old and over.

11.15am to 1pm Primary For under 12 year olds, and Nursery for 18 month old to 3 years old.

12 Noon to 1pm Relief Society Meeting for Sisters 18 years and over(Women)

12 Noon to 1pm Priesthood Meeting for Brothers 18 years and over(Men)

12 Noon to 1pm Young Men and Young Women Classes for 12 to 18 year olds.

**All are welcome to come and join us.**

**Weekday Meetings**

Every Tuesday:

Youth Meetings for 12 to 18 year olds from 7.30pm to 8.30pm

First Wednesday of each month:

Sisters Meeting from 7.30pm to 9pm





# GRACE FELLOWSHIP



*An International English Speaking Baptist Church for Everybody*

**Love God: Love People: Care for the World**

*For God so loved the world that He gave His only Son. John 3:16*

Why not come and join us? A warm welcome always awaits you.

All of our meetings are open to you.

Every Sunday	9.45 am	All Age Bible Study
each month)	11.00 am	Worship Service (Lord's Table on 4 <sup>th</sup> Sunday
Church	3.00 pm	Afternoon Worship at Great Gidding Baptist
Every Wednesday	7.00 pm	Prayer Meeting
Men's Breakfast		
Saturday 10 <sup>th</sup> Sept '16	9.00 am	All men welcome, come and bring a friend

If there is any way in which we can help or any questions you need to ask please call Pastor Pete and Penny Bourne on 01480 432207 or 07887707940 / 07908093224 or email us at [bourneagain38jer333di@gmail.com](mailto:bourneagain38jer333di@gmail.com) or [pennyanne.bourne@gmail.com](mailto:pennyanne.bourne@gmail.com) or phone David Stokes on 01480 891023 and we will do our very best to help. If you need help with transport to any of the meetings just call Pastor Pete or Penny as above.

---

September already! Where has this year gone? As we grow older it seems as though the days just run one into another, and we see time slipping past. Then we look back on our memories to our younger days when we seemed to have all the time in the world, and we could not wait for school summer holidays to start or our birthday to come around. Then we wished for Christmas to arrive with the presents and all the good things that we had at that time. Now as I am reaching my 78<sup>th</sup> birthday in October I often think about the future. What will Heaven be like? How many of my friends will I see there? What will be doing in that World? And then I stop and think about all those that do not share the Faith in Christ? What will happen to them? Could I have done more to show them the love of God? What could I do to share the truth of the Bible? How will I be judged? But that will have to wait a little while longer I hope! If this is just how you feel but not sure of your resting place I pray that you would give some time to find out about the love of God. I have just been reading about Jonah and Nineveh. Record shows just how much God loved those outside of the Hebrews, His chosen ones. Give it a read, Book of Jonah, Old Testament.

**Pastor Pete**



## CHURCH SERVICES



**ST BARTHOLOMEW'S  
GREAT STUKELEY**



**ST MARTIN'S  
LITTLE STUKELEY**

### September

4th	9.00 am	Holy Communion		<b>No Service</b>
11th	8.00 am	Holy Communion		<b>No Service</b>
	9.00 am	Family Service		
18th	9.00 am	Holy Communion	8.00 am	<b>No Service</b>
25th	9.00 am	Morning Prayer	9.00 am	Holy Communion

### October

2nd	9.00 am	Holy Communion		<b>No Service</b>
-----	---------	----------------	--	-------------------

### WHO'S WHO IN THE CHURCHES

Churchwardens	Harry Raby Brookfield Farm Great Stukeley	Sue Pond Church Way Little Stukeley  Camilla Payne Old Rectory, Church Way Little Stukeley
Secretary of the Parochial Church Council	Alan McGoff 4 Seathwaite Stukeley Meadows Huntingdon	Camilla Payne Old Rectory, Church Way Little Stukeley
Vice Chairman of the Parochial Church Council		Jocelyn Kerr 2 Mill Close Little Stukeley Tel: (01480) 453213
Rector	Revd Andrew Milton Tel: (01480) 412674	

# Independent Financial Advice

01480 451 412

[www.huntsifa.co.uk](http://www.huntsifa.co.uk)



- **Is this how you feel when faced with a financial decision?**
- **One which you do not really have the skill or knowledge to decide upon?**

**We specialise in helping people aged 60 plus make the right decision in the following areas;**

- **Equity Release**
- **Impaired Annuities**
- **Pension Transfers**
- **Long Term Care**

**Don't leave one of the most important decisions of your life to luck; speak to the specialist  
NOT**

**'Dom down the Pub' or 'Beryl-Ann in the Hairdressers'!**

**We have 21 years experience and 1,000's of satisfied clients**

**Ring us on  
01480 451 412  
for a free interview  
to discuss your needs.**



**positive**solutions<sup>®</sup>

altogether **individual**

**3 Royal Oak Passage High Street Huntingdon Cambs PE29 3EA 01480 451 412**



CENTRE FOR  
**COMPLEMENTARY  
HEALTH**

Enhance Your Well Being With Our Natural Health Treatments

With over 20 years experience working with local GP's, we're able to offer a range of the most relevant natural health and complementary therapies

This includes treatment for:

- ↙ back & neck pain
- ↙ headaches
- ↙ sport injuries
- ↙ foot problems
- ↙ other musculoskeletal problems

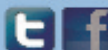
Contact us for advice and information on our wide range of treatments

call: **01480 455221**

mail: [info@CentreForCompHealth.com](mailto:info@CentreForCompHealth.com)

visit: [CentreForCompHealth.com](http://CentreForCompHealth.com)

6 Cambridge Road, Godmanchester PE29 2BW



BUPA and PPP Registered Providers

## Your Local Printer

- Business Cards
- Leaflets
- Flyers
- Forms
- Booklets
- Tickets
- And so much more...

**NOW  
PRINTING  
CLOTHING**

[www.easiprint.biz](http://www.easiprint.biz)  
**01480 718270**

**FREE DELIVERY**

**easiprint**

23 Levellers Lane Ind Est, Eynesbury, St Neots, Cambs, PE19 2JL

**R&R**  
DECORATING  
OF SAWTRY

Shortly to change name to:  
**Alconbury & Weald Decorating Services**

**A Local Qualified Decorator  
Reasonable Rates - Reliable**

**Insurance Work undertaken - Internal & External Decorating  
Painting - Wallpapering - Coving - Property Maintenance - Roof  
Maintenance - Gutters also cleaned, repaired or replaced**

**Local References on request**

**Give Rob a call on 07971 337581 or 01480 891961**

**Or email: [r.bates01@btinternet.com](mailto:r.bates01@btinternet.com)**

