



SEPTEMBER 2013



Left:

Stukeley Residents Donna Smith & Ray Daniels raised £260.00 for the Alzheimer's Society, by dressing up at an "80's" concert held recently at Audley End.

Well done guys!

Below:

Stukeley Meadows Youth Football Club Under 9's.

The club is having a big bumper Halloween Party. For information about the party see Page 31.





**FULLY INSURED
PROFESSIONAL AND
RELIABLE PROPERTY
SERVICES**

01480-436747

enquiries@hpp-ltd.co.uk

Visit our website at

www.hpp-ltd.co.uk

- Refurbishments
- Renovations
- Extensions
- General Building Work
- Kitchens
- Bathrooms
- Home Make-overs
- Garage Conversions
- Block Paving
- Patios
- Decorating



Osteopathy | Physiotherapy | Acupuncture | Chiropody | Pilates | Alexander Technique



Enhance Your Well Being With Our Natural Health Treatments

With over 20 years experience working with local GP's, we're able to offer a range of the most relevant natural health and complementary therapies

This includes treatment for:

- ↕ back & neck pain
- ↕ headaches
- ↕ sport injuries
- ↕ foot problems
- ↕ other musculoskeletal problems

Contact us for advice and information on our wide range of treatments

call: **01480 455221**

mail: info@CentreForCompHealth.com

visit: CentreForCompHealth.com

6 Cambridge Road, Godmanchester PE29 2BW



BUPA and PPP Registered Providers

October 2013 Magazine Cut-off Date

Cut-off date for the October Stukeleys Parish Magazine is

9am Friday 20th September 2013

Please get articles in on time. Thank you.

FUTURE EVENTS

Mon 2 nd September	Parish Council Meeting	7.30 pm	GSVH
Sat 7 th September	Little Stukeley Flower Show	3.00pm	LSVH
Wed 11 th September	WI Meeting	7.30pm	GSVH
Sat 14 th September	Little Stukelley Safari Supper	6.30pm	LSVH
Wed 18 th Sept	Heritage Group Annual Outing	9.00am	GSVH
Sunday 13 th October	Harvest Festival Lunch	12.00pm	GSVH
Wed 18 th September	Heritage Group Annual Outing	9.00am	GSVH
Sat 19 th October	Harvest Supper	6.30pm	LSVH
Fri 20 th September	WI Inspiring Women Coffee Morning	10.30-12.00	GSVH
Sat 14 th December	Christmas Dinner	7.30pm	LSVH

Take a look at the Magazine website at www.stukeleymag.co.uk

Email to: Martyn at martyn@stukeleymag.co.uk

Post/drop in to: 7 Hill Close, Great Stukeley PE28 4AZ

Tel: 01480 432633 Mob: 07710 171924

Please include your phone number in case of queries.

Space in the magazine is limited, so articles should be about 300 words. This is to allow as many people as possible the opportunity to contribute to the magazine. It would be helpful if you could submit articles sized to an A5 page in Word or PDF.

We reserve the right to refuse an article, cut its length or hold it over to a later issue without notice.

Please Note: Any articles or letters appearing in this Magazine are accepted in good faith and are purely the opinion of the Writer and do not necessarily reflect the opinions of the Editor or Parish Council.

A charge is made to advertise in this magazine. All enquiries should be directed to Martyn Fox (Tel: 01480 432633) or the Clerk of the Parish Council (Tel: 01480 455365).

This Month

Page 4:	Parish Council Meeting Report
Page 5:	Little Stukeley Village Hall
Page 7:	New Allotments
Pages 13:	More than £2500 raised to help Sport Star Tom Smith
Page 15:	Is renewable energy for you?
Pages 16-19:	GS Flower, Garden & Craft Show Results
Page 20:	WI Coffee Morning
Page 31:	Stukeley Meadows Youth Football Club Halloween Party

Parish Council Meeting Report August

Seven councillors, two County Councillors and one member of the public attended the August meeting of the Council held in Little Stukeley village hall. As of that night there had only been two applications for the job of clerk so it was decided to widen the search and extend the closure date until 31st August 2013, it was also agreed that the interview procedure would be conducted by Mrs. Parkin, Mrs. Sly and Mr. Hulstrom who would then report to the full council prior to any final decision, it was also agreed that Mr. Newman would attend these interviews but only in an advisory capacity. On a recommendation by Mr. Hobson a finance committee was selected, this to work in conjunction with the clerk on all financial aspects of the councils business.

It was advised that the housing survey being conducted by Cambs ACRE was now delivered, it was strongly urged by the Council that parishioners filled in the questionnaire as it was vitally important for the future growth and maintenance of our village communities.

It was reported that the members had decided to recommend Refusal of the plans for Washingley Business Park and also Refuse the re-development of the site surrounding the old gatehouse bungalow at the entrance to Gt. Stukeley Park, anyone wanting to see the reasoning for these decisions only has to contact the clerk.

A new entrance to a landlocked paddock in Owl End was Approved.

A meeting between the Parish Council, County Officials and Urban & Civic was held recently on site of footpath 13 at Gt. Stukeley, to decide the remedial work needed, how much it would cost and who pays?

As you will note elsewhere, the new Owl End Allotments are now officially open and allotment society members have started work, there are still two plots available, anyone interested should contact Paul Vincent in Park View. It must be emphasized again the large debt of gratitude that the Parish owes Urban & Civic and in particular Tom Baker, the designer and Rebecca Britton for the terrific work they have put in to bring this project to fruition, also the tireless efforts of some of your own Parish Councillors.

Rabbit Fencing work on the playing field was due to start in mid August and by now should hopefully be complete.

The next Council meeting is on Monday 2nd September 2013 at **7.00pm** at Great Stukeley village hall, the early start is to accommodate **'A Drop in Session' to be staged by the Abbey Group who are proposing to build a new Solar Farm south of Abbots Ripton, parishioners are urged to come and ask questions, this session will last for approximately one hour only.**

Michael. J. Newman, Clerk & RFO.

PS. Through the columns of this magazine I would like to sincerely thank those people who have very kindly contacted me to express their appreciation for the work I have done over the last 38 years in my capacity as clerk, as I said previously, I did it because I enjoyed it. Thank you to one and all. MN.

LITTLE STUKELEY VILLAGE HALL

Flower Show

A final reminder about the flower show on Saturday 7th September. The Hall will be open from 9.00 am to 12.30 pm for exhibitors to register their entries. Judging will be from 1.00 pm to 2.30 pm, and the show will open at 3.00 pm.

Remember that it is “The Stukeleys’ Flower Show” and is open to residents of Great and Little Stukeley. Schedules listing the categories for exhibits in the show have been distributed in Little Stukeley. If anyone from Great Stukeley wants a copy of the schedule, or if anyone who has been missed, or needs additional copies please contact me (preferably by email then I can send one by return email).

There will be the usual games and sideshows as well as a licensed bar (beer, wine and spirits). This is a small friendly show so please don't be reluctant to enter your exhibits, you could easily win; you won't win a fortune if you do, but you will see your name in print! In any case come along to support the event and have an enjoyable afternoon.

Donations for the Tombola Stall.

Once again we are asking you to let us know if you have anything for the Tombola stall. If so, then please would you either contact one of the following, or leave your donation at their house by **Thursday 5th September**

Keith Winter	4, Sanders Close
Tel: 450656	
Cheryl Wilson	Hillside, Church Way
Tel: 435581	
Bryan Schofield	1, Mill Close
Tel: 411284	

Finally, **would all winners from last year still holding trophies please return them to me by Thursday 5th September; cleaned, please!**

Future Events.

The last event of 2013 will be the Christmas Dinner on Saturday 14th December; remember to book early for this as numbers are limited and we had to disappoint several people last year because they were late booking.

Keith Winter (Tel: 450656 email: keithwinter2@sky.com)

Alconbury Thursday Club Wheelchairs

The Thursday Club is a weekly day centre for elderly and/or housebound individuals, which is held in the Sports and Social Club in Alconbury. Transport is available to get people to and from the Club. A home cooked lunch is provided and as well as social time there is regular entertainment and outings throughout the year.

Several people from the Stukeleys are already members and all enjoy their weekly trip down the hill to Alconbury. We do have space for more members at the moment if anyone reading this would like to join us. Thursday Club also have a stock of well-maintained wheelchairs, which are available for anybody in the community to borrow when there is a short term need. Please contact Gaynor Foley on 01480 890551 to arrange delivery.

If you feel that you might be interested in attending please do contact Mary Watkin on 01480 896950, mobile number 07531 393402 or email at marywatkin@btinternet.com



Lady with Small Van



Available for local work.

House Clearance - Garden Rubbish - Garage Clearance

No Job Too Small

Also Small Deliveries and Collections

In and around Huntingdon Area

Ring Anne On 07977 590170



Safari Supper

to start in Lt Stukeley Village Hall

on Saturday 14th September at 6 .30pm Tickets

£10

from Jocelyn Kerr Tel 453213.

Harvest Supper

Lt Stukeley Village Hall

on 19th October 7pm

Tickets £10 from Jocelyn Kerr Tel 453213.

Bar and Raffle.

6th August 2013

Stukeleys residents root for new allotments

Residents of Great and Little Stukeley celebrated the handover of their new community allotment scheme this week.

The project has been a collaboration between the Stukeleys Parish Council, the newly formed Stukeleys Allotment Society and landowners Urban&Civic and has created 17 allotments for local residents of the two Huntingdonshire villages.

Sue Parkin, Chairman of the Stukeleys Parish Council, said:

“We are absolutely thrilled with the allotments, which look fantastic and will be a valued resource for generations of residents. It has been great to see the partnership effort that has gone into the project: from the expertise and design of the engineers and landscapers working on Alconbury Weald, to Trevor Marks who has built it to such a high standard. We're all just keen to get in and get planting!”

Tom Baker of Urban&Civic said:

“The project started when the Parish Council approached local landowners to enquire if there was any land that could be converted into allotments to meet local need. We had farm land on the edge of Great Stukeley, which we knew would be good productive soil in a convenient location for residents.

As discussions went on it was clear the parish needed some expertise to look at landscaping and design, water supply and carrying out the work, so we ended up calling on the expertise of our design team. The result is something really special, which reflects the environment and community around it.”

The design has drawn on best practice exemplars from across the UK supplied by the National Society for Allotments and Leisure Growers (NSALG) and from the landscape architects at Parkwood Consultancy Services (formerly Roger Griffiths Associates) who are part of the design team at Alconbury Weald.

Simon Watkins, the lead designer for the allotments said:

“The parish council and allotmenters asked for a design which promoted a sense of community and was in keeping with the environment around it. We developed a layout radiating from a central hub in an innovative octagon-square pattern naturally dividing the plots into full and half size and giving all plot holders easy access to communal facilities such as storage and water. As well as the proposed clubhouse, there is space for the allotment community to add features as the project establishes – such as communal raised beds accessible to wheelchair users, coppice areas, plant nurseries and shared chicken run. It's really up to them how they develop it and I'm excited to see what they do once they get their spades in!”

The allotments have a rainwater store to be as sustainable as possible, and local contractor Trevor Marks who constructed the project designed a pump system which uses the rain collection pipe network to also provide water stations at a number of locations on the allotments – so that no-one has to walk too far to get water.

The communal clubhouse and storage area was designed free of charge by local architects Waterland Associates and the group are now applying for funding to get it built.



Volunteer opportunity.

Discover and explore ancient woodlands

Help develop our new tree nursery site

Gain skills in horticulture

Learn about native tree species and how to identify them

Keep fit doing practical work in the tree nursery

Meet people and make new friends.

Alconbury Weald Tree Nursery is looking for volunteers to take part in an exciting project to grow and plant trees with seeds collected from local ancient woodland.

**Sessions run Tuesdays and Thursdays 9.30–12.30
Alconbury Weald Tree Nursery**

There are also volunteer opportunities at the Huntingdonshire Community Nursery, Park Lane, Godmanchester

To get involved or to find out more call **Amrita** on 07748 623073 or email amrita.huggins@huntingdonshire.gov.uk
www.alconbury-weald.co.uk

**Alconbury
Weald
Make|Grow**




Huntingdonshire
DISTRICT COUNCIL

The Stukeleys Heritage Group Annual Outing Wednesday 18th September 2013



**We depart from Great Stukeley Village Hall at 9 am
and return later that afternoon about 5.30 pm.**

Michael Monk, Convenor, Stukeleys Heritage Group
33 Church Road, Great Stukeley. 01480 456634
michaelmonk@hotmail.com



Fundraising Ferret Racing Evening 2 Saturday 22nd March 2014

For our much looked forward to Fundraising Ferret Racing Evening 2 to be held at the Great Stukeley Village Hall on Saturday 22nd March 2014 the theme will be American-The Stars & Stripes.

Please plan your outfit in all or just one of these colours.

I am eager to find a large US flag with the following dimensions:

Length 120 inches/306 centimeters

Width 72 inches/182 centimeters

We are looking for a donation or a loan of the flag for this event. Could you kindly call me without delay.

We are also appealing for Sponsor's for the races for the evening. The sponsorships cost £ 30.00 each and can be made in your name, the name of your company or in memory of someone very special.

Please call me if you can help with either, or both, of these requests.

Your help, sponsorship and donation for our Fundraising Ferret Racing Evening 2 would be very much appreciated.

Mary Alleyne-James

Event Organizer for Great Stukeley Village Hall Committee Tel 01480 433954

Coronations and Celebrations Tuesday 12th November 2013

Our day trip, Coronations and Celebrations, tells the life story of Her Majesty Queen Elizabeth II from humble beginnings in London's Mayfair through to her Wedding and Coronation at Westminster Abbey. On Tuesday 12th November 2013 I am organizing an intimate and very entertaining tour of Westminster Abbey-scene of every Coronation since 1066 and at least 10 Royal weddings.

Due to the size of our 52 strong group we will have two Blue Badge Holder Guides who have been specially trained to take parties around the Abbey. Westminster Abbey presents a particular challenge. Not only do our specially trained guides have to cover 1,000 years of history but there are around 450 monuments any one of which we can ask about during the visit. The Abbey contains the tombs of Kings and Queens and the graves and memorials to the good and the great including statesmen, writers, artists, scientists and musicians. Over three thousand people are buried at the Abbey.

King Henry III (1226-1272) rebuilt the Abbey in its current Gothic style in the middle of the 13th Century. Henry wanted the Abbey not only to be a place of worship but also a place for the Coronation and burial of monarchs. The Abbey has a large collection of monuments and sculptures including the tomb of the Unknown Warrior. During our very special visit we will be able to view Ralph Heimans' regal portrait of the Queen which was recently vandalized by spraying 'Help' in paint on the canvas inflicting £ 5,000 damage.

Our 'Private' Tour of Westminster Abbey will begin after lunch at 3pm. Our tour ends with time for shopping, a comfort break and afternoon tea at the Cellarium Café in the Abbey where you may purchase refreshments before our journey home. The price for this trip is £53.00 per person including morning tea/coffee, lunch and the return coach journey.

Mary Alleyne-James

Organizer

Tel 01480 433954

The Stukeleys WOMEN'S INSTITUTE:

Inspiring Women Coffee Morning Friday 20th September 2013

The Stukeleys WOMEN'S INSTITUTE Coffee Morning FUNDRAISING EVENT will be held at The Great Stukeley Village Hall on Friday 20th September 2013 from 10.30am to 12 noon.

We are raising money for Marie Curie and MAGPAS Air Ambulance and plan a raffle and hope that you will join us and give generously.

We are seeking DONATIONS to be used as prizes for this fundraising Raffle.

Please make contact with me by phone to arrange a convenient time as soon as possible if you can help us with donations. If a visit to my home is not possible then I would be pleased to arrange collection.

Thank you for your kind thoughtfulness.

Mary Alleyne-James

Tel 01480 433954

**THE TOWER OF LONDON Trip:
Tuesday 11th March 2014**

Founded by William the Conqueror in 1066 THE TOWER OF LONDON is one of the world's most famous and spectacular fortresses. Over the past 948 years it has been a Royal Palace, an armoury and a place of imprisonment and execution.

The Beefeaters who guard the Tower will regale us with stories of its history.

Our journey will begin on Tuesday 11th March 2014 at The Great Stukeley Village Hall where we will meet our coach for a very prompt 8.30am departure.

On our arrival at the Tower we will meet our Blue Badge Holder Tourist Guide. Our tour will include the history, customs and traditions of the Tower as well as visits to Traitors Gate, the White and Bloody Towers with special time to view the CROWN JEWELS.

The all-in price of this tour will be £ 39.50 per person.

Bring a packed lunch or buy a sandwich or hot meal at the Tower.

If this wonderful historic day in London interests you PLEASE CALL ME without delay to avoid disappointment as my trips do fill-up very quickly.

Mary Alleyne-James
Organizer
Tel 01480 433954

**Thursford's Christmas Spectacular:
Sunday 17th November, 2013**

This Year's THURSFORD CHRISTMAS SPECTACULAR with a £3 million budget is a fast moving, three hour, celebration of the Festive Season. The show features an eclectic fusion of the seasonal and sacred with famous chart topping pop favourites sung alongside traditional carols.

THURSFORD's CHRISTMAS SPECTACULAR is now generally recognized as being the largest of its kind not only in the UK but in Europe. With a cast of 130 professional singers, dancers and musicians the show covers everything from solo singers to full four part coral numbers with amazing dancing and costumes.

Word has spread of the amazing show and over fifty coaches travel each day from all over the country to this outstanding show. Many of the patrons, like ourselves, have visited this outstanding show year on year.

On the day please bring along your Christmas shopping list for family and friends as Thursford offers several shops filled with wonderful gift ideas for the whole family.

Our visit for the 2pm performance will take place on Sunday 17th November 2013. The cost, £49.50 per person, includes SUPERB seat allocations and your return coach trip .

Mary Alleyne-James
Organizer
Tel 01480 433954



Presents the 2nd

Urban&Civic

HUNTS 2 STAR OPEN TABLE TENNIS TOURNAMENT

Sponsored by **TOPSPIN**
SPORTS

Saturday 31st August and Sunday 1st September 2013
9am – 6pm

At One Leisure St Ives Westwood Road St Ives PE27 6WU

Following last year's successful inaugural tournament, this year it will be run over 2 days. Saturday will be for the junior events under 11s, under 13s, Cadets and Juniors boys and girls. The Senior events will take place on Sunday including Mens and Womens Singles, Banded and Veterans. Many of the country's top players will be competing so come along to watch some superb table tennis – **it's free for spectators.**

If you would like to enter, the entry form is available on line on the English Tables Tennis Association (ETTA) website: etta.co.uk/competitions. For more information please contact Sarah Toyn on sarah.toyn@yahoo.co.uk or 07961 358067.

Huntingdonshire Regional College lends support to sport star Tom Smith

Huntingdonshire Regional College raised more than £2,500 to help sports star Tom Smith go to the States and take part in the World Dwarf Games. Tom, who is 12 and lives in The Stukeleys in Huntingdonshire, has a condition called Achondroplasia, commonly known as Dwarfism. Since becoming involved in the Dwarf Sports Association he has shown a natural talent for sporting activities.

Tom achieved three gold medals this year in football, cycling and basketball, a silver medal in sprinting and a bronze in hockey at the National Dwarf Games, and is now going to

compete at the World Dwarf Games in Michigan this month (August) as part of the GB team.

The Tom Smith Appeal was chosen as the College's sponsored charity for the year and a black-tie charity ball was held at the Marriott Hotel in Huntingdon to help raise funds for the trip.



Fiona McGonigle, organiser of the event, said: "Tom is an inspirational person and we wanted to help him realise his dream of taking part in this year's Worlds. The response of people who came to the event and feedback afterwards was overwhelming. So many staff and local companies have asked that the College do another ball next year and hold it as an annual event to raise money for other local causes."

Special guests included the Mayor of Huntingdon Bill Hensley, Cambridgeshire Chamber of Commerce Chief Executive John Bridge OBE, Roderick Sutherland, Assistant Principal at Peterborough Regional College, Susanne Stent, Principal of Huntingdonshire Regional College and College Governors.

A painting by artist Alina Stepura was kindly donated by Roderick Sutherland for an auction, Step By Step Ballroom Dancing's Susan Stopps and Colin Rayner added Hollywood glamour to the evening and Stephanie Mackentyre and Steve Rhodes sang to guests at the glittering event.

Photographs: Peter Redhead photography <http://www.peterredheadphotography.co.uk>

Top image: Roderick Sutherland, Assistant Principal at Peterborough Regional College, Tom Smith, Susanne Stent Principal of Huntingdonshire Regional College, John Bridge OBE, Cambridgeshire Chamber of Commerce Chief Executive and College Governor, Jenny Bridge.

Bottom image: Jenny Bridge, Mayor of Huntingdon Bill Hensley, Cambridgeshire Chamber of Commerce Chief Executive and College Governor John Bridge OBE, Fiona McGonigle, Business Development Consultant and event organiser and Susanne Stent, Principal of Huntingdonshire Regional College.

For further information please contact: Jennifer Reilly, Jennifer-Reilly@huntingdon.ac.uk;

01480 379216 or Nicola Collette, nicola.collette@consciouscomms.com; 01223 393 812.

SATURDAY AFTERNOON BARBECUE

(In aid of Church Funds)

St Bartholomew's Church has planned a Barbecue for Saturday 14th September 2013

Do come along and join us in the Garden of 8 Beech Avenue (by kind permission of Malcolm & Janet Talbot)

for a really great afternoon of convivial company and good food.

Tickets priced at:

£10.00 for Adults & £ 7.00 for Children,

which includes food and a glass of wine, can be obtained from

Nancie Raby Tel No 453269, Doris Turpin Tel No 456476 or

Janet Talbot Tel No 731286

The barbecue will commence at 2.00pm and will no doubt, as in the past, provide a smashing outing for all the family with an opportunity to help your local Church



ST BARTHOLOMEW'S CHURCH

Harvest Festival Lunch

(In aid of Church Funds)

Get your tickets now



**A Harvest Lunch is planned for 12.00pm on
Sunday 13th October 2013**

**All are welcome to join us earlier in Church for
Harvest Festival Service at 9.30am**

**Do come along and join us at the Great Stukeley Village Hall
for the usual mix of convivial company and good food that our Harvest
meals are known for and the normally popular draw with a variety of prizes**

Tickets priced at: £10.00 for Adults & £ 7.00 for Children,

**which includes the food and a glass of liquid refreshment,
can be obtained from**

Mrs Nancie Raby Tel No 453269

Mrs Doris Turpin Tel No 456476

or

contact any member of St Bartholomew's Parochial Church Council.

*The food will be served at 12.30pm and will no doubt, as on previous occasions,
prove a popular family event so book early to avoid disappointment*

Latest date for booking Tuesday 8th October

Is renewable energy for you?

As solar panels become a common sight around our neighbourhoods, you may be wondering what options are available to you to save or even generate your own energy but it can be daunting knowing where to start. At Trading Standards we want to help you find a trader you can trust and make sure you know what you can expect of these businesses.

When considering the options available, the Energy Saving Trust (www.energysavingtrust.org.uk) is a good place to start. They are an independent organisation that provides free, expert advice on saving energy in your home. Their website contains extensive information, and they also have a helpline which can be contacted on 0300 1231234 (national rate).

In terms of funding any improvements, if you aren't able to pay for them up front, you could consider the Government's Green Deal Scheme (www.gov.uk/green-deal-energy-saving-measures) which allows for repayment over a period of time through your energy bills. As with any finance arrangement, make sure you know how much you will have to repay in total, what the monthly charges will be, and check the interest rate is competitive with other finance options. You should also be aware that with Green Deal the debt attaches to the property, so if you sell it, your buyer will have to take over the debt. If you need advice on finance options, your local Citizens Advice Bureau will be able to help you.

There are a range of businesses that offer home assessment visits to advise you on the options most suitable for your specific circumstances. You will usually need to pay for this and you should check whether there is a tie-in clause requiring you to use a certain business to do the installation work if you decide to go ahead. The assessment will give you estimated savings projections for the first year based on a specific level of energy usage. Unfortunately this means you won't know exactly what you will save, but you can at least check to make sure the estimate is based on a realistic level of energy usage for your situation.

In terms of finding a trader, it is important to shop around to ensure the business is reputable and that the price is fair before agreeing to any work. Green Deal has its own approved assessors and installers, but if you are not using Green Deal we would recommend that you find an installer and products that are part of the Micro Generation Certification Scheme (MCS) or are Renewable Energy Assurance Limited (REAL) approved. These organisations have codes of practice that traders have to comply with and standards that the products have to meet. The Energy Saving Trust website allows you to search for local installers who belong to MCS. Some members also sit on our Buy With Confidence approved trader scheme giving you even greater assurance that they are businesses you can trust. Visit www.buywithconfidence.gov.uk for more details.

As always, we would recommend getting three quotes to ensure the installation price and projections are reasonable, and check the terms and conditions carefully before agreeing to anything.

If you encounter any problems with an assessor, installer or any other type of business and need some advice, please contact our advice partner, the Citizens Advice Consumer Helpline, on 08454 040506 (national rate).

GREAT STUKELEY FLOWER, GARDEN & CRAFT SHOW RESULTS 2013

SECTION A – VEGETABLES

	1 ST	2 ND	3 RD
A 1 POTATOES	I. SHAW	S. REYNOLDS	M. HILLIARD
A 2 SHALLOTS	M. HILLIARD		
A 3 SHALLOTS PICKLING		NO ENTRIES	
A 4 ONION SETS DRESSED	M. HILLIARD	I. SHAW	I. SHAW
A 5 ONION SEED AS GROWN		NO ENTRIES	
A 6 CARROTS	I. SHAW	I. SHAW	S. REYNOLDS
A 7 BEETROOT	M. HILLIARD	I. SHAW	C. FIELD
A 8 VEG MARROW	I. SHAW	I. SHAW	M. HILLIARD
A 9 RUNNER BEANS	M. HILLIARD	C. FIELD	
A10 FRENCH BEANS	M. STEPHENSON	M. STEPHENSON	C. FIELD
A11 COURGETTES	C. FIELD		
A12 PEAS		NO ENTRIES	
A13 CABBAGE	C. FIELD		
A14 LETTUCE	M. STEPHENSON		
A15 CUCUMBER INDOOR	D. STRANGE	D. HOLOHAN	S. REYNOLDS
A16 CUCUMBER OUTDOOR	C. FIELD		
A17 TOMATOES INDOOR	I. SHAW		
A18 TOMATOES OUTDOOR	M. HILLIARD		
A19 TOMATOES CHERRY	A. MORRIS		
A20 CUL HERB COLLEC'N	A. MORRIS	I. SHAW	
A21 4 DIFF. VEGETABLES	I. SHAW	M. HILLIARD	
A22 FRUIT	C. FIELD	M. STEPHENSON	M. HILLIARD
A23 RHUBARB`	I. SHAW	I. SLY	C. FIELD
A24 LONGEST RUNNER BEAN	V. RICHARDSON		
A25 UNUSUAL VEG		NO ENTRIES	
A26 ANY OTHER VEG	I. SHAW	C. FIELD	

SECTION BI- PLANTS & FLOWERS

B 1 DAHLIAS LARGE	I. SHAW	M. STEPHENSON	
B 2 DAHLIAS POM POM	I. SHAW		
B 3 DAHLIAS CACTUS	I. SHAW		
B 4 GARDEN FLOWERS	A. MORRIS	P. OAKES	I. SHAW
B 5 FLOWERING SHRUB	A. MORRIS	S. BELL	M. STEPHENSON
B 6 GLADIOLI	M. HILLIARD	I. SHAW	M. HILLIARD
B 7 SWEET PEAS ANNUAL	A. MORRIS		I. SHAW
B 8 ROSES HT	M. BROCKETT		
B 9 SUNFLOWER		NO ENTRIES	
B10 SINGLE ROSE	C. RICHARDSON	S. BELL	M. HILLIARD
B11 ANTIRRHINUMS	I. SHAW		
B12 PANSIES/VIOLAS	A. MORRIS		
B13 POT PLANT FOLIAGE	I. SHAW		
B14 “ FLOWERING	A. MORRIS		
B15 “ FUCHSIA	S. REYNOLDS	D. STRANGE	D. STRANGE
B16 “ GERANIUM		NO ENTRIES	
B17 “ CACTUS/SUCCULENT	M. FIELD	I. SHAW	S. STEPHENSON

SECTION Bii – FLORAL ARRANGEMENTS

	1 ST	2 ND	3 RD
B18 FRESH FLORAL ARRANGEMENT	A. MORRIS	T. HARRIS	J. SLY
B19 VICTORIAN POSY	J. SLY	A. MORRIS	
B20 BUTTONHOLE	A. MORRIS	J. SLY	M. HILLIARD
B21 CORSAGE	A. MORRIS	J. SLY	J. SLY
B22 FOLIAGE ARR.	J. SLY		
B23 MUG (MEN ONLY)	I. SLY		
B24 UNUSUAL CONTAINER	J. SLY		
B25 STUKELEYS WI 95 TH	S. TOYN	J. SLY	
B26 SONG TITLE	S. TOYN	J. SLY	

SECTION C – HOME PRODUCE

C 1 VICTORIA SPONGE	J. SLY	D. STRANGE	A. MORRIS
C 2 LEMON DRIZZLE CAKE	R. FORD	D. STRANGE	I. HOLOHAN
3 QUICHE	D. STRANGE	I. HOLOHAN	
C 4 MEN'S DOCKEY CAKE	B. EVANS	S. BELL	I. SLY
C5 SAUSAGE ROLLS	R. FORD	D. STRANGE	A. MORRIS
C 6 ROUND SHORTBREAD	-	-	S. TOYN
C 7 FLAPJACKS	S. STEPHENSON	M. BROCKETT	I. HOLOHAN
C 8 BREAD LOAF	A. MORRIS	D. STRANGE	R. FORD
C 9 SCONES	P. OAKES	-	D. STRANGE
C10 CONFECTIONERY	D. STRANGE	M. BROCKETT	
C11 PRESERVES	A. MORRIS	A. MORRIS	P. OAKES
C12 CHUTNEY/PICKLE	P. OAKES		
C 13 HOME MADE WINE	A. MORRIS		

SECTION Di – ARTS & CRAFTS

D 1 H/K GARMENT	S. STEPHENSON	M. FIELD	
D 2 H/K BABY CLOTHES	J. SLY	D. STRANGE	
D 3 H/K ARTICLE	M. BROCKETT		
D 4 EMBROIDERY ETC	N. CHARTER	A. MORRIS	
D 5 CUSHION	N. CHARTER	A. MORRIS	
D 6 CROCHET	D. STRANGE	J. SLY	
D 7 SOFT TOY	S. STEPHENSON	N. SLY	J. GIBBONS
D 8 DRESSED DOLL	M. BROCKETT	M. BROCKETT	W. RICHMOND
D 9 NEW FROM OLD	B. EVANS	V. RICHARDSON	V. RICHARDSON
D10 ANNIVERSARY CARD	D. STRANGE	D. STRANGE	
D11 BIRTHDAY CARD	S. BERRILL	S. REYNOLDS	S. BERRILL
D12 COLD PORCELAIN	D. STRANGE	D. STRANGE	
D13 PATCHWORK/QUILTING	A. MORRIS		
D14 DRAWING	K. PARKIN	K. PARKIN	K. PARKIN
D15 PAINTING		NO ENTRIES	
D15 LADIES H/CRAFTS	S. STEPHENSON		
D16 GENTS H/CRAFTS	B. EVANS	B. EVANS	V. RICHARDSON

SECTION Dii – PHOTOGRAPHY

	1 ST	2 ND	3 RD
D18 FAMILY PHOTO	I. HOLOHAN	S. TOYN	N. SLY
D19 FLOWERS PHOTO	S. TOYN	C. FIELD	I. SLY
D20 SUNSET PHOTO	C. FIELD	N. SLY	I. SLY
D21 HOLIDAY PHOTO	M. BROCKETT	S. TOYN	K. PARKIN
D22 FROM A WINDOW	I. HOLOHAN	N. SLY	I. SHAW
D23 HUMOROUS	S. STEPHENSON	J. GIBBONS	M. BROCKETT
D24 BLACK & WHITE	S. TOYN	N. SLY	W. RICHMOND

SECTION E – CHILDREN

E1a ARTS (UP TO 10YRS)	A. FACEY	B. GIBBONS	B. GIBBONS
E1b ART (11-16 YRS)	M. GIBBONS		
E2 PAINTED/DECORATED PLANT POT	A. FACEY		
E3 BIRD PICTURE	A. FACEY	R. SLY	
E4 COOKERY	A. FACEY		
E5 CONSTRUCTION	M. GIBBONS	A. FACEY	A. FACEY
E6 MIN. GARDEN	C. HARRIS		A. FACEY
E7 PHOTOGRAPH	M. GIBBONS	B. GIBBONS	
E8 COLOURED PICTURE	B. GIBBONS		

GARDEN COMPETITION

	1 st	2 nd	3 rd
BEST GARDEN	NEIL STRANGE 18 Church Close	Mr & Mrs Oakes 34 Church Road	Iain Shaw 19 Moorfield Way
BEST CONTAINER	MICHAEL MONK		
BEST BASKET	JOHN & PAT OAKES		

The Great Stukeley Flower, Garden and Craft Show 2013

The show this year was a great success and the committee and I were delighted with the overall result of this year's show as my first year "in charge". We had 126 people through the doors and would like to thank all those people who took time to put their exhibits in, we had 392 entries across all the sections.

Presentation of the trophies this year was made by a familiar face in the village, Grahame Bundy, our former chairman of the flower show.

I would like to extend a big thank you to those volunteers who helped in setting up for the show, during the show and clearing up afterwards and finally to the committee members for their help and support during the months of planning.

Looking to the future and keeping the "Flower Show" active, new committee members are needed. You do not have to be a keen gardener or have a great knowledge of plants and flowers to be part of it. Meetings take place only once a month starting in March and concluding after the show in August in a very relaxed manner with no pressure.

As some folks may know we used to have a Best Spring Garden Cup; this is gathering a lot of dust and would be nice to revive this cup as part of our flower show.

So anyone interested in becoming a member or participating in the Spring Garden please contact any committee member and express your interest.

Iain Shaw

Chairman of the Great Stukeley Flower, Garden and Craft Show

GREAT STUKELEY FLOWER, GARDEN & CRAFT SHOW
CUP WINNERS 2013

MOST POINTS HOME PRODUCE	DEANNA STRANGE
THREE ROSES	MARION BROCKETT
BEST FLORAL ARRANGEMENT	ANN MORRIS
MOST POINTS FLOWER SECTION	IAIN SHAW
MOST POINTS FLORAL ARRANGEMENTS	JAN SLY
MOST POINTS VEGETABLE SECTION	IAIN SHAW
STEVE HURST CUP-BEST POT PLANT	SYLVIA REYNOLDS
SWEET PEA TROPHY	ANN MORRIS
EVA WENDHOLT SHORTBREAD TROPHY	NOT AWARDED
ART & CRAFT CUP	DEANNA STRANGE
BETTY WOOLLCOTT TROPHY FOR	MARION BROCKETT/
DRESSED DOLL/SOFT TOY	SHEILA STEPHENSON
EMBROIDERY TRAY (MOST POINTS SEC.D4)	NITA CHARTER
BEST SINGLE PHOTOGRAPH	CLIVE FIELD
MOST POINTS PHOTOGRAPHY	SARAH TOYN
MARK HAYWARD TROPHY	ABIGAIL FACEY
(UNDER 10 YEARS)	
MARK HAYWARD TROPHY	CALLUM HARRIS
(11-16 YEARS)	
PLATE FOR MOST POINTS CHILDREN'S SEC.	ABIGAIL FACEY
TROPHY FOR YOUNGEST EXHIBITOR	RILEY SLY
FAMILY TROPHY	THE SLY FAMILY
BEST KEPT GARDEN IN GT STUKELEY	NEIL STRANGE
TROPHY FOR BEST CONTAINER	MICHAEL MONK
TOM BUTTERCASE TROPHY/BEST HANGING BASKET	JOHN & PAT OAKES
LADIES TROPHY (SECTIONS B, C, D)	ANN MORRIS
BEST ENTRY IN SHOW	ANN MORRIS
MOST POINTS IN SHOW	IAIN SHAW



Coffee Morning

Friday 20th September 2013

10.30 – 12.00

At the Village Hall

The Stukeleys WI are holding a coffee morning to raise money for Marie Curie and MAGPAS Air Ambulance. Do come and join us for a tea or coffee and slice of cake for £1.50 with free refill. Try your luck in the draw and tombola and other games where prizes can be won.

AGC SERVICES



Provides:

Boiler Servicing & Installation

Help if you have Central Heating Problems

Electrical Installation & Fault Finding

Fully Gas Safe Registered & Corgi Electrical Registered

Domestic and Commercial



For Friendly Advice on Heating, Gas and Electrical Problems

Call Nino on:

01480 412483 or 07786 437126

Or Email augustingaetano@talktalk.net

Need glasses?



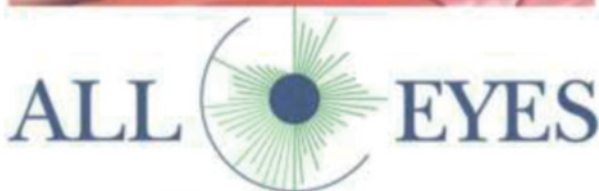
Buy direct from the Specs
Manufacturer

Save up to 75%

**Especially on High/complex
prescription:**

- Single Vision Specs from just £9*
- Bifocals Specs from £39*
- Varifocal Specs from £59*
- Reglaze your own frame save ££*
- Emergency Specs & repairs*
- Premium frames & lenses at low prices
- Large selection of frames in stock

(*T & C's apply, please ring for details)



Spectacle Makers

...why pay more?

Just bring in your prescription for a TOP QUALITY bargain.

Visit our Factory Shop:

20 Norman Way Ind. Park
Over, Cambridge CB24 5QE

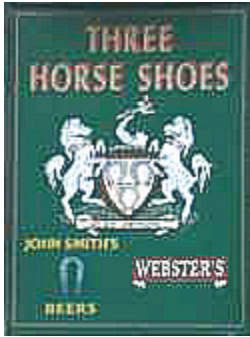
Tel: 01954 231545 or 07824 706969

Email: info@all-eyes.co.uk

Website: www.all-eyes.co.uk

Factory Opens: Mon - Fri 9.00am to 5.00pm

(Shop opening times may vary, please check to avoid disappointment)



THREE HORSESHOES

Ermine Street, Great Stukeley PE28 4AH

A friendly family Pub run by Michelle & Doddy

**Keep watching this space for
news of our refit.**

Coming soon

Don't forget we are a Family Friendly Pub
We have swings etc. for children and a
good selection of beers (including Cask Ales), spirits
and soft drinks for adults.

Private Parties catered for.

Come and visit us. We look forward to seeing you.

For more information phone Michelle on 07927 909345

The UK's No.1 Lawn Care Company



- Scarification
- Aeration
- Lawn Fertilising
- Weed Control
- Moss Control
- Water Conserver
- Pest and Disease Management



GreenThumb has a variety of treatment programmes to suit your pocket that include our traditional 'pay-as-you-go' service and our new, pay monthly, Direct Debit programmes, where you can save up to 25% annually.

Our treatments start from £5 per month, that's cheaper than D-I-Y and without the hassle!

Call your local branch today for a FREE lawn analysis and no obligation quote.

0800 0111 222

GreenThumb
LAWN TREATMENT SERVICE



Find us online at: www.greenthumb.co.uk

WILKINS

ESTABLISHED 1895

CHIMNEY SWEEP®

- ✿ **TRADITIONAL BRUSH
AND VACUUM SERVICE**
- ✿ **NESTS REMOVED**
- ✿ **CAGES, CAPS AND
COWLS FITTED**
- ✿ **SWEEPING CERTIFICATES
ISSUED**
- ✿ **PROFESSIONAL, CLEAN
SERVICE**
- ✿ **FULLY INSURED**
- ✿ **POLICE CHECKED**

01223 521069

**wilkinschimneysweep.co.uk/
cambridge**



**Step
by**

...we'll lead the

**Ballroom & Latin American Dance
Classes**

Adults

**Monday evenings : Bluntisham Village Hall
Thursday evenings : Alconbury Memorial Hall
Friday evenings : Houghton & Wyton Memorial
Hall**

*Private Lessons by arrangement for
General Improvement - Medal Tests - Wedding Dance*

**For further information
email :
enquiries@stepbystepballroom.co.uk
telephone : 07876 130037**



M&D FLOORING

A Family Run Business With Over 30 Years Experience

- CHOOSE SAMPLES IN THE COMFORT OF YOUR OWN HOME
- ALL FLOORING SUPPLIED AND FITTED AT COMPETATIVE PRICES
- DOMESTIC AND COMMERCIAL INSTALLATIONS
- UPLIFT AND DISPOSAL OF OLD FLOORING
- FURNITURE MOVING SERVICE AVAILABLE

- CARPETS
- VINYLs
- LAMINATES
- SOLID WOOD FLOORING
- LUXURY VINYL TILING
- ENGINEERED WOOD FLOORING

To make an appointment please call

Matthew Mob: 07871 277244
Eve: 01487 812825

David Mob: 07711 744625
Eve: 01480 454752

Visit us at www.CarpetsVinylsandWoodenflooring.co.uk
Email: info@CarpetsVinylsandWoodenflooring.co.uk



STUKELEY'S COUNTRY HOTEL

Telephone 01480 456927

Food served 12.00-2.30.00pm and 6.00-9.00pm

Two Meals for 9.95

These meals change every two months

Sun 12.00 – 3.00pm and 6.00- 9.00pm

*We have a **HOMEMADE** section in our menu, come try something of your choice.*

Senior citizens, Mon/Tue

*Saturday Grills (with a **FREE** starter or dessert) and Sunday Roasts, from £7.95*

£5 OFF

A MEAL FOR TWO AT STUKELEY'S HOTEL

Complete your details and present this voucher
(USE FOR MAIN MEALS ONLY)

Name:.....

Address:.....

This voucher is not valid in conjunction with any other
Special promotion. Valid until Oct 2013

The Retreat

HOLISTIC BEAUTY

A salon with a difference;

01480 700621

- Spa-like surroundings
- Spacious rooms
- A warm welcome
- Relaxed, unhurried treatments
- Holistic experts
- Beauty experts
- Quality products
- Fair pricing

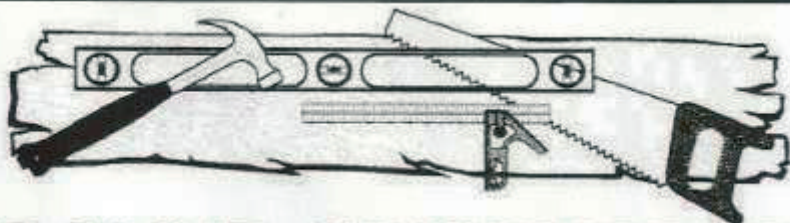
Book now for **20%** off your first visit!

Threading from £5, Dermalogica 1 hr facials £40, Crystal Clear microdermabrasion, Nouveau eyelash extensions, Thai massage, Sports Massage, Aromatherapy oils blended just for you... Couples massage...so much more...and of course Vouchers so that you can share the experience.



www.theretreat.me.uk

1a, George Street, Huntingdon. PE29 3AD



DAVID HUMPHREY

Carpenter & Joiner

21 Lake Way, Stukeley Meadows, Huntingdon, Cambs PE29 6SU

VAT Registration No 759 633 89

- Small works
- Fitted kitchens
- Loft conversions
- Windows & Doors
- General property repairs

Call today for a free quotation.

Tel: 01480 432275 Mob: 07788 428580 Fax: 01480 451566

Do you have misty double glazed units, stiff locks, broken leaded lights or shop windows?

Listed Building, Modern House, Office or Church?

•Fast efficient service

•Quality products

•Affordable prices

DGU Replacements
 Single & secondary
 double glazing
 Specialist & Safety
 Glass
 Solar & Safety Film
 Shop Plates

**Leaded Light
 specialist
 Stained Glass
 restoration, repairs
 and remakes**

Composite Doors
 PVC, Wood & Aluminium
 windows and doors
 Lock picking, repair and
 replacement
 Child Safety Restrictors
 Mechanism replacements



We do all this and more. For advice and free quote call us now on

Office: 01487 831120

Mobile: 07799 061919

saltream@gmail.com www.saltream.co.uk

Registered Company No. 5596469



WOOLLEY HILL WIND FARM

Community Liaison Group

Ellington Village Hall, Ellington, PE28 0AB
Monday 16 September at 7:00pm

This meeting will provide an update on general progress towards construction of the wind farm.

All members of the public are welcome.

Attendance is free.

www.woolleyhill.co.uk

If this meeting is oversubscribed, we will seek to arrange a further date.

Please check the Woolley Hill website closer to the proposed date of the meeting for final confirmation of the date and location, as this may be subject to change.

Background information about Woolley Hill Wind Farm and the minutes and agendas from previous meetings can be found at:

www.woolleyhill.co.uk

res
power for good

FANTASTIC BUSINESS OPPORTUNITY

INTERNET RUN SO CAN BE MANAGED FROM THE
COMFORT OF YOUR OWN HOME.

CAN BE RUN EITHER PART TIME OR FULL TIME
ALONGSIDE YOUR PRESENT JOB
FOR MORE INFORMATION PHONE

ALAN ON 07828 059784

Or go to www.talkfusion.com/1819215

**THE CHURCH OF
JESUS CHRIST OF LATTER DAY SAINTS.
ERMINE STREET, GREAT STUKELEY,
NEXT TO THE VILLAGE HALL.**

Bishop Matthew Wade

Sunday Services

10.00am to 11.15am Sacrament Meeting

11.15am to 12 noon Sunday School Classes for 12 years old and over.

11.15am to 1pm Primary For under 12 year olds, and Nursery for 18 month old to 3 years old.

12 Noon to 1pm Relief Society Meeting for Sisters 18 years and over(Women)

12 Noon to 1pm Priesthood Meeting for Brothers 18 years and over(Men)

12 Noon to 1pm Young Men and Young Women Classes for 12 to 18 year olds.

All are welcome to come and join us.

Weekday Meetings

Every Tuesday:

Youth Meetings for 12 to 18 year olds from 7.30pm to 8.30pm

First Wednesday of each month:

Sisters Meeting from 7.30pm to 9pm



GRACE FELLOWSHIP

An International English Speaking Baptist Church for Everybody
Love God: Love People: Serve the World

'I was glad when they said to me, "Let us go to the house of the Lord." Psalm 122: 1

Why not come and join us? A warm welcome always awaits you. All of our meetings are open to you.

Every Sunday	10.40 am	Prayer Meeting
	11.00 am	Worship Service
	7.00 pm	Small Group Study at the Church NOT SUNDAY 8th
Every Monday	7.30 pm	Prayer Meeting
Every Thursday and Friday	7.30 am	Skype Prayer Group. Just Phone Pete and add your number to join in.
Saturday 14 th September	9.00 am	Men's Breakfast Fellowship
2nd Sunday each Month	3.00 pm	Afternoon Worship at Great Gidding Baptist Church

If there is any way in which we can help or any questions you need to ask please call Pete and Penny Bourne on 01480 432207 or 07887707940 / 07908093224 or email us at penny.bourne@sky.com bourneagain38jer333di@gmail.com or phone David Stokes on 01480 891023 and we will do our very best to help. If you need help with transport to any of the meetings just call Pete or Penny as above. If you would like more information about Grace Fellowship visit our website, www.gracefellowshipbaptist.co.uk

Please like Grace Fellowship on Facebook : www.facebook.com/gracefellowshipibc
or Great Gidding Baptist Church: www.facebook.com/Great-Gidding-Baptist-Church/229739410473098

Our Next 'Film Night at Grace Fellowship' will be..... on FRIDAY 18th October at 7.30 pm

'THE MAN WHO CHANGED THE WORLD'

Look forward to seeing you there!

What do you hope for?

The hope of a lot of people is to win the lottery or the football pools even on a rank outsider in a horse race, yet in all these hopes the odds are stacked against us. Some will say about the lottery well our money will help a charity but the truth is if they really wished to help someone it would be better to give that cash directly to the good cause that way they would get it all and it would go to the cause you had in mind not to something you did not wish to support. All these things have no guarantee of you winning but offer a chance of riches that we can only dream off and a better way of life. Some will think that they have had a win in a draw they have never even entered and will spend their money trying to get this award that they will never see. The truth is that the hope of a big win is so exciting some will chase the dream even though it will cost them dearly. The sad thing is many people turn their back on the one sure Hope we have that has a guarantee of a better life now and in eternity a hope that brings peace and a joy that we can never know even if we had all that money we long for. My hope is built on nothing less than Jesus blood and righteousness.

Pastor Pete

CHURCH SERVICES



**ST BARTHOLOMEW'S
GREAT STUKELEY**



**ST MARTIN'S
LITTLE STUKELEY**

September				
1st	9.30 am	Holy Communion CW		No Service
Fourteenth Sunday after Trinity	Celebrant	Rev'd Philip Swindells		
8th	8.00 am	Holy Communion CW		No Service
Fifteenth Sunday after Trinity	Celebrant	Rev'd Andrew Milton		
	9.30 am	Family Service		
	Leader	Janet Talbot		
15th	9.30 am	Holy Communion CW	8.00 am	Holy Communion
Sixteenth Sunday after Trinity	Celebrant	Rev'd Philip Swindells	Celebrant	Rev'd Andrew Milton
22nd	9.30 am	Morning Prayer	11.00 am	Holy Communion
Seventeenth Sunday after Trinity	Leader	Alan McGoff	Celebrant	Rev'd Andrew Milton
29th	9.30 am	Songs of Praise	11.00 am	Holy Communion
Eighteenth Sunday after Trinity	Leader	Rev'd Andrew Milton	Celebrant	Rev'd Andrew Milton
October				
6th	9.30 am	Holy Communion CW		No Service
Nineteenth Sunday after Trinity	Celebrant	Rev'd Philip Swindells		
WHO'S WHO IN THE CHURCHES				
Churchwardens	Richard Turpin		Sally Smith	
	Montagu House		16 Low Road	
	1 Church Walk Great Stukeley		Little Stukeley	
	Harry Raby		Camilla Payne	
	Brookfield Farm		Old Rectory, Church Way	
	Great Stukeley		Little Stukeley	
Secretary of the Parochial Church Council	Alan McGoff			
	4 Seathwaite			
	Stukeley Meadows Huntingdon			
Vice Chairman of the Parochial Church Council	Richard Turpin		Jocelyn Kerr	
	Montagu House		2 Mill Close	
	Church Walk Great Stukeley		Little Stukeley	
	Tel: (01480) 456476		Tel: (01480) 453213	
	Fax: 07092 365508			
Rector	Revd Andrew Milton			
	Tel: (01480) 412674			



Stukeley Meadows Youth Football Club



AN UPDATE ON SMYFC New Season 2013-14

SMYFC are very much looking forward to the new football season 13/14. With work now complete on the Mini Pitch, SMYFC see the season commence on Saturday 7th September (Kick off time TBC).

We are very much looking forward to seeing our brand new U8's and U9's play their first league matches away then their first home matches are 14th September (subject to change due to match day clash)

Our U11's 9v9 team have their first match away to Little Paxton and then their first home match on the Great Stukeley Rec Field is 21st September.

Our Under 14's girl premier at home on 14th September with their first match against Hornead Hares. The U15's start their season away against Comberton Crusaders but play at home on 22nd Sept.

Full fixture lists can be found on the Archway to the Mini Pitch or in The Three Horseshoes Pub.

Tiny Tacklers will resume their training in September.

For any further information please contact Club Secretary Jo Haddock on 07753 251196

SMYFC's Monster Halloween Party
Saturday 26th October 2013
16:00 - Late

- FANCY DRESS inc.
- Best Costume (Jnr & Snr)
- BBQ - finishing @ 19:00
- DISCO from 19:00 - late
- FACE PAINTING
- BOUNCY CASTLE
- CAKE STALL, TOMBOLA
- BIG BUMPER RAFFLE
- & LOTS. LOTS MORE

at
**The Three Horseshoes Pub,
 Great Stukeley**

All proceeds going towards SMYFC to help develop youth football in Cambs. For more details contact 07753251196
www.postcardmywall.com

Club Chairman:
Phil Cox
07973 148515

Email: Stukeley.meadowsYFC@gmail.com

Club Secretary:
Jo Haddock
07753 251196

Ability is not important, passion and enthusiasm is everything

twenty4-7

Airport transfer specialist

Stansted from £54
Luton from £56
Heathrow from £95
Gatwick from £109
Birmingham from £89

Credit/debit cards accepted
On-board DVD Entertainment
Baby/Booster seats provided
All airport parking charges included
Theatres/Days Out/Theme Parks - and more

Tel: 07514 141338
or 01480 466333



Visit www.twenty4-7.co.uk



PROFESSIONAL, RELIABLE SERVICE



Going to the airport?

Take the stress out of getting there with an executive chauffeur driven car you can rely on to be **on time, every time**

- 24 hour Duty Manager
- Live flight monitoring
- Complimentary travel packs
- E-mail and text confirmations

Call **01480 890200** or visit www.flexecars.co.uk

FlexEcars is part of the **Flex-Able Group**,
30 Edison Road, St Ives, PE27 3LF. Est. 1994

Your Local Printer

- Business Cards
- Leaflets
- Flyers
- Forms
- Booklets
- Tickets
- And so much more...

**NOW
PRINTING
CLOTHING**

www.easiprint.biz
01480 718270

FREE DELIVERY

easiprint

23 Levellers Lane Ind Est, Eynesbury, St Neots, Cambs, PE19 2JL

R&R
DECORATING
OF SAWTRY

A Local Qualified Decorator
Reasonable Rates - Reliable
Insurance Work undertaken -
Internal & External Decorating

Painting - Wallpapering - Coving - Property Maintenance - Roof
Maintenance - Gutters also cleaned, repaired or replaced
Local References on request

Give Rob a call on 07971 337581 or 01480 891961
Or email: r.bates01@btinternet.com

