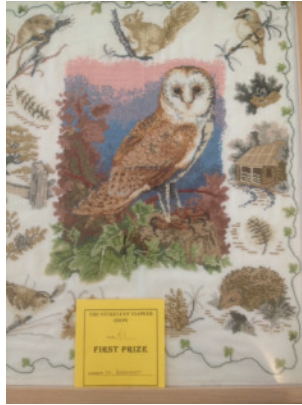




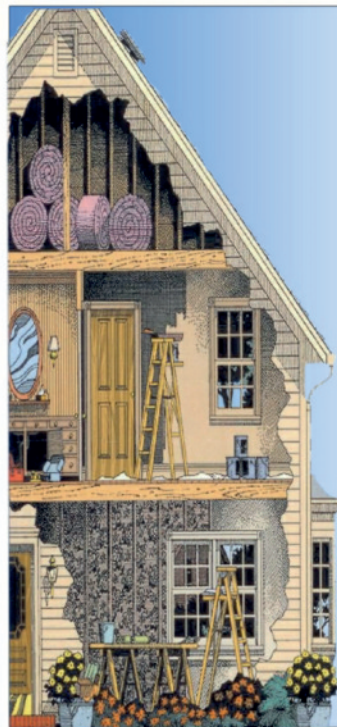
# OCTOBER 2014



**The Stukeleys' 55<sup>th</sup> Annual Flower Show held at Little Stukeley Village Hall on Saturday 6<sup>th</sup> September 2014  
See Page 7 & Centre Pages**



**Arjun Basra a Great Stukeley Table Tennis Club member receiving Most Promising Young Player award from Victoria Parchment of Alconbury Weald.  
See pages 10 & 11 for report.**



**FULLY INSURED  
PROFESSIONAL AND  
RELIABLE PROPERTY  
SERVICES**

**01480-436747**

enquiries@hpp-ltd.co.uk

Visit our website at

[www.hpp-ltd.co.uk](http://www.hpp-ltd.co.uk)

- Refurbishments
- Renovations
- Extensions
- General Building Work
- Kitchens
- Bathrooms
- Home Make-overs
- Garage Conversions
- Block Paving
- Patios
- Decorating



Osteopathy | Physiotherapy | Acupuncture | Chiropody | Pilates | Alexander Technique



CENTRE FOR  
**COMPLEMENTARY  
HEALTH**

**Enhance Your Well Being With Our Natural Health Treatments**

With over 20 years experience working with local GP's, we're able to offer a range of the most relevant natural health and complementary therapies

This includes treatment for:

- back & neck pain
- headaches
- sport injuries
- foot problems
- other musculoskeletal problems

Contact us for advice and information on our wide range of treatments

call: **01480 455221**

mail: [info@CentreForCompHealth.com](mailto:info@CentreForCompHealth.com)

visit: [CentreForCompHealth.com](http://CentreForCompHealth.com)

6 Cambridge Road, Godmanchester PE29 2BW



GUPA and PPP Registered Providers

# November 2014 Magazine Cut-off Date

The cut-off date for the November Stukeleys Parish Magazine is  
**9am Monday 20<sup>th</sup> October 2014**

## FUTURE EVENTS

Mon 6 <sup>th</sup> Oct	Parish Council Meeting	7.30 pm	LSVH
Sat 4 <sup>th</sup> Oct	Harvest Supper	7 - 7.30 pm	LSVH
Wed 8 <sup>th</sup> Oct	WI Meeting	7.30 pm	GSVH
Sat 11 <sup>th</sup> Oct	Mens Breakfast	9.00 am	Grace Fellowship
Sat 18 <sup>th</sup> Oct	Casino Night	7.30 pm	LSVH
Sun 19 <sup>th</sup> Oct	Harvest Festival Lunch	12.00pm	GSVH
Tue 4 <sup>th</sup> Nov	Electrical Appliance Collection	From 8.00 am	
Sat 15 <sup>th</sup> Nov	WI Music Evening	8.00 pm	GSVH
Sat 13 <sup>th</sup> Dec	Christmas Dinner	7.30 pm	LSVH
Sun 14 <sup>th</sup> Dec	Carol Service	6.30 pm	St Martin's Church
Sat 20 <sup>th</sup> Dec	Christmas Dinner Dance	7 - 7.30 pm	GSVH

Take a look at the Magazine website at [www.stukeleymag.co.uk](http://www.stukeleymag.co.uk)

Email to: Martyn at [martyn@stukeleymag.co.uk](mailto:martyn@stukeleymag.co.uk)

Post/drop in to: 7 Hill Close, Great Stukeley PE28 4AZ

Tel: 01480 432633 Mob: 07710 171924

Please include your phone number in case of queries.

Space in the magazine is limited, so articles should be about 300 words. This is to allow as many people as possible the opportunity to contribute to the magazine. It would be helpful if you could submit articles sized to an A5 page in Word or PDF.

We reserve the right to refuse an article, cut its length or hold it over to a later issue without notice.

Please Note: Any articles or letters appearing in this Magazine are accepted in good faith and are purely the opinion of the Writer and do not necessarily reflect the opinions of the Editor or Parish Council.

A charge is made to advertise in this magazine. All enquiries should be directed to Martyn

## This Month

Front & Pages 7, 16, 17: The 55<sup>th</sup> Annual Stukeleys Flower

Pages 4-5: Stukeleys Parish Council News

Page 7: Little Stukeley Village Hall

Page 8: Letter to the Editor

Page 9: Stukeleys Heritage Group visit to Bletchley Park

Page 15: WI Report

Page 19: Independent Living Fund closure

Page 20: Free Electrical Appliance Kerbside Collection

Page 27: Cambridgeshire ACRE Community Oil Buying Scheme

# THE STUKELEYS PARISH COUNCIL NEWS

## From the meeting held on the 1<sup>st</sup> September 2014

At the Parish Council Meeting held at Great Stukeley Village Hall on the 1<sup>st</sup> September 2014, 6 Parish Councillors, 1 County Councillor, and the Parish Clerk attended.

Cambridgeshire County Council have asked Parishes to complete a Surface Water Management Plan Flooding History Questionnaire, it was felt that it was very difficult to complete the questionnaire with dates etc. with confidence. Therefore the Parish Council agreed to respond detailing flooding problems identified in both villages over the previous years and to request that it would be helpful to have a point of contact, where details of events could be reported and recorded as they occur.

The Parish Council's response to the Cambridgeshire County Council's consultation on the Household Recycling Service was to state that felt that any reduction in service would increase fly tipping and it strongly opposed the closure of the Alconbury Recycling Centre.

A bid for funding for a bus shelter in Little Stukeley has been submitted to the Cambridgeshire County Council's Local Highways Improvement Scheme 2015-16.

The village seats in both villages are to be repaired and refurbished very shortly. A spreading flowering rose bush is to be planted under the Great Stukeley village. Quotes for repairs to the pedestrian gates, replacement of the 3m gate and repairs to the rabbit fencing at Great Stukeley Playing Fields have been obtained, however, the original suppliers of the gates and fencing are also to be consulted. We have been advised by the County Rights of Way Officer, that Footpaths 11 and 24 are now clear and Bridleway 4 will be repaired in the autumn. A suitable central storage unit for The Stukeley Allotments is still being investigated and the Parish Council thanked Cllr Paul Vincent for all his hard work on this project.

Please note the next **RECYCLING OF ELECTRICAL AND ELECTRONIC EQUIPMENT COLLECTION EVENT** is being held on **TUESDAY 4<sup>th</sup> NOVEMBER** – so please start sorting out your obsolete electrical and electronic equipment! For further information please see news release.

The following planning applications were considered by the Parish Council:

- **Alconbury Weald, Ermine Street – 1401300FUL** – New road construction to support the delivery of Alconbury Enterprise Zone.

It was decided to make no observations for or against this application on the basis that it was consistent with the approach suggested in the illustrative masterplan submitted alongside the outline planning application for the site.

- **Alconbury Weald, Ermine Street – 1401298DEMDT** – Demolition of various buildings **AND Alconbury Airfield, Ermine Street – 1408175COND** – Condition information relating to (1102094FUL) conditions being addressed C2, C3, C9, C10, C12, C16.

The Parish Council expressed grave concerns about a number of points which are not clear from the documents attached to these proposals'

- that there is no indication of the length of time that it would take to complete the demolition process which makes it difficult to respond to likely impacts and of concerns from local residents
- the Parish Council had been led to believe by U&C that crushing would take place within an enclosed structure to limit the impact of noise and dust. The Parish Council was not convinced that dust can be adequately dealt with by the suggested mist-damping method, especially given the strong winds which prevail on this exposed site. The Parish Council investigated the machinery proposed - typified in the documents as being a Kleemann 110 or similar - and noted that it does not include any enclosure to contain sound and dust. It had also been understood that crushing would take place in a remote part of the site. Whilst the Parish Council accepts that it is more logical to crush at the point of demolition, better safeguards are needed than currently proposed. It needs to be borne in mind that the next stage of demolition to enable Phase 1 housing to proceed will be very close to dwellings in Little Stukeley and therefore the right methodology needs to be established now.

- **Affordable Housing**

The Parish Council considered that the District Council's suggestion to focus initially on the site at Little Stukeley as a first phase should be supported. However this is contingent upon an understanding that the Parish Council still wishes to see a small group of affordable homes in each village and therefore the Great Stukeley site should remain under active



consideration. This is especially relevant as it is not clear as to whether the Little Stukeley site can accommodate the total identified need. It is also important the Little Stukeley site includes an enhanced landscaping area on its northern boundary to assist the perception of separation from the proposed housing on Phase 1 of Alconbury Weald which will be very near.

#### **Next Scheduled Meetings**

Monday 6th October 2014 at 7:30pm - Little Stukeley Village Hall, Little Stukeley

Monday 3rd November 2014 at 7:30pm – Great Stukeley Village Hall, Gt Stukeley

Please check the website and notice board for notification of any Extra-ordinary Parish Council Meeting to be held.

Parish Councillors will be present at Open Surgeries at 7:15pm prior to Parish Council Meetings and parishioners are invited to attend to express their support, views or concerns on issues affecting the Parish.

A full set of Minutes and other Parish Council information are available at [www.thestukeleys-pc.gov.uk/](http://www.thestukeleys-pc.gov.uk/)

Carole Pollock, Parish Clerk/RFO to The Stukeleys Parish Council, 5 Gore Tree Road, Hemingford Grey, Cambs PE28 9BP. Tel: 01480 464817 email: [clerk@thestukeleys-pc.gov.uk](mailto:clerk@thestukeleys-pc.gov.uk)

## **Electrical Waste Kerbside Collection on behalf of The Stukeleys Parish Council Tuesday 4<sup>th</sup> November**

Do you have electrical items that you no longer use or want? WISER Recycling can help you, and you can help The Stukeleys Parish Council.

WISER Recycling are a local recycling company based in St Ives and will be conducting another collection of **Household Waste Electrical and Electronic Equipment (WEEE) on Tuesday 4<sup>th</sup> November 2014!**

Electrical items will be collected in the morning by WISER drivers and vehicles. We will collect any electrical item (including non-working) from hairdryers, videos, microwaves, to televisions and fridge/freezers - basically, anything with a plug on. WISER Recycling will collect from right outside your house! All items will be taken to our fully licensed treatment facility in St Ives for Reuse, Refurbishment or Recycling.

The Parish Council will receive a revenue for the WEEE Waste collected, to be spent on Community Projects. The last collection was a success with nearly 5 tonnes collected.

**PLEASE PLACE YOUR ITEMS 'KERBSIDE' BY 10:00 – IF POSSIBLE, PLEASE AVOID PLACING OUTSIDE THE EVENING BEFORE.**

If you are unable to move your larger items outside, please contact us 01480 464 111 – and our Operatives will attend your property to assist.

WISER is in partnerships with many local and regional charities including Emmaus, Lighthouse, i-Trust and Eco-Computer Systems through which it sells working items back to social groups and low income families. We are full permitted and authorised by the Environment Agency and operate to international standards; ISO 9001 (Quality), ISO 14001 (Environmental) and OHSAS 18001 (Health & Safety), ensuring a professional recycling and recovery service, second to none.

In the meantime, if you would like to find out more about WISER's services, please visit our website:

[www.wisergroup.co.uk](http://www.wisergroup.co.uk)

Carole Pollock, Parish Clerk/RFO to The Stukeleys Parish Council, 5 Gore Tree Road, Hemingford Grey, Cambs PE28 9BP. Tel: 01480 464817 email: [clerk@thestukeleys-pc.gov.uk](mailto:clerk@thestukeleys-pc.gov.uk)

**I have received some letters/emails to the Editor during September. Ordinarily they would have been published in this October Issue but unfortunately there is not enough space to include them together with replies. Therefore I will hold them over until the November Issue. Thank you to those of you who have written.**

**Martyn Fox  
Editor**



## **Marilyn Schofield**

**Died peacefully on 14<sup>th</sup> August  
2014**

**At Sue Ryder St John's Hospice  
Moggerhanger**

**Bryan Schofield would like to thank  
all friends and neighbours for their  
cards and kind messages of  
sympathy.**

**Thanks also to all those who  
attended Marilyn's Memorial  
Service and for their donations in  
her memory to Cancer Research UK.**



Child Care for 6 months - 5 year olds  
Unique and Safe Countryside Setting - Flexible Hours  
Sheltered Outdoor Play Area  
15hrs Free Voucher Scheme Sessions for 3 Year Olds  
Term Time Only Places Available  
Holiday Club for Children Who Have Attended the Nursery  
FREE Parking In front of Nursery  
Good Ofsted Inspection

  
**Kings Ripton Lodge**  
Huntingdon Cambridgeshire PE28 2NH

[www.aflyingstartnursery.co.uk](http://www.aflyingstartnursery.co.uk)

[info@aflyingstartnursery.co.uk](mailto:info@aflyingstartnursery.co.uk)



## **LITTLE STUKELEY VILLAGE HALL**

# **CASINO NIGHT**

The Committee's next event will be the re-scheduled casino night, **on Saturday 18<sup>th</sup> October**. Don't forget to **book your tickets for the evening as soon as possible** to avoid disappointment as numbers will be limited to provide space for the casino. On arrival you will be offered a free cocktail and canapés, there will be a buffet style meal later, and casino games will be played during the evening. Fake money will be provided to start you off, and the person who makes the most during the evening will win a prize. If you want to you can have a go at being a croupier – its only paper money!

**Tickets will be £12 each;**

**Ring or email Sally Smith (450356 or [sallysmith101@aol.com](mailto:sallysmith101@aol.com)) to book your places.**

**Keith Winter**

(Tel: 450656 email: [keithwinter2@sky.com](mailto:keithwinter2@sky.com))

---

**The Stukeleys' 55<sup>th</sup> Annual Flower Show**  
**Held in the Little Stukeley Village Hall on Saturday 6<sup>th</sup> September 2014**



See the centre pages for the Write Up, Results and Cup Winners

Dear Martyn,

## Letter to the Editor

I read with some dismay and a certain amount of annoyance the Council report in the August issue, which referred to excellent progress made in Council Procedures since the appointment of a new clerk and election of new councillors. I would wish to make the following comment, 'the excellent progress in the introduction of new Council procedures was in my opinion well in hand before these changes to personnel were made, these changes to Council procedures were entirely the result of some incredibly hard work by PAUL RYAN he spent many hours, unfortunately to the detriment of his own business, the single most important reason he gave up his council seat, he undertook single handedly the review and implementation of new Standing Orders, Financial Regulations and several other important Council procedures, this I fully appreciated took many hours of tedious attention to detail for which I was very grateful. Paul's contribution to Parish Council business also led to many hours researching the intricate detail of the plans for Alconbury Weald'. So come on Council members, be honest, please don't claim that the new Council is responsible for all these improvements, give the man that did 'all the spade work' some credit, his are a large pair of boots to fill. The article I feel gives the 'wrong impression' entirely. Please be aware I take no credit whatsoever for this procedural work.

Yours sincerely

Michael J Newman  
'Hillside' 42 Low Road  
Little Stukeley  
Huntingdon  
PE28 4BA  
(01480) 455365



### ST BARTHOLOMEW'S CHURCH

## Harvest Festival Lunch

*(In aid of Church Funds)*



**Get your tickets now**

**A Harvest Lunch is planned for 12.00pm on  
Sunday 19<sup>th</sup> October 2014**

**All are welcome to join us earlier in Church for Harvest Festival Service at 9.30am**

**Do come along and join us at the Great Stukeley Village Hall**  
for the usual mix of convivial company and good food that our Harvest meals are known for  
and the normally popular draw with a variety of prizes

**Tickets priced at: £10.00 for Adults & £ 7.00 for Children,**  
which includes the food and a glass of liquid refreshment,  
can be obtained from

**Mrs Nancie Raby Tel No 453269**

**Mrs Doris Turpin Tel No 456476**

or

contact any member of St Bartholomew's Parochial Church Council.

*The food will be served at 12.30pm and will no doubt, as on previous occasions,  
prove a popular family event so book early to avoid disappointment*

*Latest date for booking Tuesday 14<sup>th</sup> October*

## **The Stukeleys Heritage Group**

### **Our visit to Bletchley Park**



On the 17<sup>th</sup> September we had our annual outing. This was the third annual outing – and this time 35 members and friends visited Bletchley Park, the home of the World War II code-breakers. Once again we were blessed with really fine weather. There was much to see, and many of us found there just wasn't enough time to do justice to all the information there. Fortunately our tickets, once stamped, will enable us to visit again within 12 months at no additional entry fee.

Our coach trip there and back was smooth and without incident (no 9 point turns and a broken wing mirror this time).

Being booked in as a group, we were personally greeted by one of the guides and we had lunch provided in the mansion, with our exclusive use of the dining room.



I hope all enjoyed the day. Many thanks to those who supported the Group by coming. I have started to receive suggestions for next year's outing.....

**Michael Monk**  
**Convenor**



## **HUNTS 2 STAR OPEN TABLE TENNIS TOURNAMENT**

The third Hunts 2 Star Open Table Tennis Tournament kicked off the new season with a flourish at One Leisure St Ives on 30<sup>th</sup> August (Juniors) and 31<sup>st</sup> August (seniors). This two day event has only been made possible with the generous sponsorship for the third year running of Alconbury Weald who paid for the venue and Top Spin Sports who provided prize vouchers for the junior events.

On Junior's day Alex Ramsden dominated the boys' events taking gold both for Juniors and Cadets and then he returned the next day to win Men's Band 1. However junior match of the day had to be the U11 Boys final. This provided a fantastic display of table tennis from two very small gladiators in Jamie Liu and Aadil Anand, the latter having only arrived from India three weeks previously taking part in his first UK tournament. He was presented with Best Performance Young Player and Most Promising Young Player went to Great Stukeley Table Tennis Club player Arjun Basra.

On Seniors' day Darius Knight performed a fantastic display against Gavin Rumgay to retain his Men's Singles title and take the £1,000 prize money. Knight was in scintillating form in the final against number 2 seed Gavin Rumgay in a repeat of last year's showdown. The new hot topic in ping pong circles is equalisation of men's and women's prize money – orchestrated by Table Tennis England who incidentally has a new Chair in Sandra Deaton. The writer reckons this is positive discrimination rather than equalisation. Our prize money is funded by the entry fees and you can see the difference in entrants between men's and women's events in our tournament so come on Ladies – enter next year's tournament on 29<sup>th</sup> and 30<sup>th</sup> August 2015 and we will be able to raise your prize money!

This year we were pleased to welcome back Victoria Parchment from Alconbury Weald who attended to present medals to the winners together with Councillor Brian Luter, Mayor of St Ives.

If you feel inspired to pick up a bat then do join us at the club in Great Stukeley Village Hall on Mondays and Thursdays 5-7pm juniors 7-10pm seniors – all ages and abilities welcome.

**Sarah Toyn - Great Stukeley Table Tennis Club**

## Summary of Results

### **JUNIOR BOYS (35 entries)**

Alex Ramsden (Northants) beat Nathan Butler (Lincs) 8,9,8

### **JUNIOR GIRLS (15 entries)**

Isabelle Joubailly (Surrey) beat Charlotte Boston (Cambs) -4,6,8,8

### **CADET BOYS (27 entries)**

Alex Ramsden (Northants) beat Erin Goscu (Middx)

### **CADET GIRLS (16 entries)**

Isabelle Joubailly (Surrey) beat Katie Holt (Hants) -8,0,10,9

### **U13 BOYS (22 entries)**

Sam Chesterman (Cambs) beat Jamie Liu (Berks) 7,10,5

### **U13 GIRLS (8 entries)**

Mollie Patterson (Norfolk) beat Amelia Chan (Middx) 7,-7,9,8

### **U11 BOYS (9 entries)**

Jamie Liu (Berks) beat Aadil Anand (Middx) 8,10,-10,6

### **U11 GIRLS (4 entries)**

1<sup>st</sup>: Sophie Chiang (Essex) 2<sup>nd</sup>: Alana Mansfield (Essex)

### **MENS SINGLES (44 entries)**

Darius Knight (Surrey) beat Gavin Rumgay (SCO) 7,-9,8,11

### **MENS BAND 1 (7 entries)**

Alex Ramsden (Northants) beat Adam Nutland (Worcs) 6,-8,-6,7,8

### **MENS BAND 2 (15 entries)**

Jody Bevington (Warwicks) beat Rory Scott (Sussex) 8,7,1

### **MENS BAND 3 (23 entries)**

Jochen Buehrer (Avon) beat George Haining (Kent) 8,8,5

### **VETERANS MENS (14 entries)**

Paul Martindill (Essex) beat Keith Fung (Essex) 1,14,3

### **WOMEN'S SINGLES (7 entries)**

1<sup>st</sup> Kelly Skeggs (Cambs) 2<sup>nd</sup> Kinga Oryl (Surrey)

### **WOMEN'S BAND 1 (6 entries)**

1<sup>st</sup> Kinga Oryl (Surrey) 2<sup>nd</sup>: Jane Li (Essex)

**Harvest Supper Little Stukeley Village Hall  
in aid of St Martins Church on  
Saturday 4 th October 7- 7.30 pm  
Tickets £10 from Jocelyn Kerr 01480 453213 .  
Bar and Raffle**

**The committee of St Martins Church , Little Stukeley , would very much like to purchase maybe 25 stackable chairs , would anyone know where we could purchase these , if so please phone Sue on 01480455398**

**The Carol Service in St. martins Church Lt Stukeley is on  
Sunday 14 th December at 6.30 pm**

**Under the Bearskin and the Royal Mews - Tuesday 12<sup>th</sup> May 2015**

I am offering an incredible opportunity on Tuesday 12<sup>th</sup> May 2015, to visit the ROYAL MEWS with our well informed *Blue Badge Holder Guide*, Martin Harvey.

We will depart from the Great Stukeley Village Hall promptly at 8.15am to reach The Westminster Central Hall for morning refreshments.

After we will stroll through an elegant slip of London, hear about the ghost of Cockpit Steps, see *James Bond's Secret Service HQ* and meet *Bandy Nan*-as wide as she was tall and with rotten gout to boot!. On *Birdcage Walk* we will learn the etiquette of the duel and will be able to witness the *Guard Change*-watching the Band march back to barracks.

Then we lunch together at the *Mad Hatter Hotel* with a choice of Roast Chicken lunch (a vegetarian option is available) with tea or coffee which IS INCLUDED in the price of the trip. Bar drinks and desserts, please note, are NOT included.

Our Afternoon will be completely devoted to the ROYAL MEWS. Here you will learn about the work of the *Royal Household* staff that provide transport of both the four-legged and the motorized kind to members of the *Royal Family*.

While at the ROYAL MEWS we will be able to see the *Windsor Grey* horses which draw the Royal Carriages. These Carriages are also on view and include the *Coronation Coach* which King William described as "like being tossed about on a rough sea", and the *Glass Coach* used for all Royal Weddings. The Queen's limousines are also on show.

UNDER the BEARSKIN and the ROYAL MEWS will cost £47.50 per person and includes:

- The coach journey to and from London
- Lunch at the Mad Hatter Hotel
- Visiting The Royal Mews
- Viewing the Guard Change
- Tips for the driver and for the Blue Badge Holder Guide who will be with us for our entire time in London

Tickets for this wonderful tour will sell quickly so please call without delay.

**Mary Alleyne-James - Tel (01480)433.954**

### **“Reflections” on my Hampton Court Palace Trip - Tuesday 16<sup>th</sup> September 2014**

It was damp and rather misty when we set out on Tuesday 16<sup>th</sup> September 2014 at 8.30am from the Great Stukeley Village Hall for our trip to *Hampton Court Palace*.

We met our Blue Badge Holder Guide, *Christine Hoodith*, at the Lion Gate on our arrival and then all 43 of my group took morning refreshments at the *Tiltyard Café*.

*Christine*, our wonderfully informed guide, took us on a fascinating tour of the *Tudor* apartments which included Henry's *Great Hall* and *Chapel Royal* and the contrasting private apartments of *William III*. We were led through the changes in court behavior and etiquette that are reflected in the design of this part of the Palace.

A small group lunched just outside the huge *Palace* at the *Mute Swan* sitting outside to enjoy the, by now, superb sunny autumn weather while others took advantage of my inside tip and lunched at the classic *La Fiamma* Italian restaurant.

After lunch we all returned to *Hampton Court Palace* splitting into two groups. One group visited the fabulous *Great Kitchens* and newly discovered *Royal Chocolate Kitchen* while our Guide took the other half of the group on an interesting tour of the more intimate *Georgian Rooms*. Then we swapped over so that everyone on the tour got to visit everything available and hear about the scandal which shook the *Royal Court*-every juicy detail!

We were given some free time to wander at leisure, buy afternoon refreshments, or take a horse and tram ride through the beautiful gardens around the *East Front*. The magnificent gardens surrounding *Hampton Court Palace* have evolved over the years from their Tudor beginnings in the early 16<sup>th</sup> Century to the present day and were a tour in themselves.

Too soon we had to leave the *Palace* behind ,say goodbye to our excellent guide and begin our journey home .Sincere thanks are extended to *Christine Hoodith* with her incredible knowledge of *Hampton Court Palace* and our driver, *Peter Brown*, who, once again, took us and brought us back safely from the Big City at 7.30pm.

**Mary Alleyne-James**

---

### **Thames Christmas Cruise, Flying High on the London Eye, Christmas Shopping at the Royal Greenwich Market and the Cologne Christ-Markt: Tuesday 9<sup>th</sup> December 2014**

The Cologne *Christ-Markt* brings a real German Christmas feeling to London's Southbank each year.

Sixty wooden chalets situated between the Southbank Centre and the *London Eye* give an opportunity for Christmas Shopping following your exciting time *Flying on the London Eye* and our 90 minute river cruise on the *London Rose*. Numerous authentically decorated wooden chalets sell a wide selection of unique hand-crafted gifts and unusual Christmas presents. In December 2012 when my group first visited this wonderful market much shopping was done for Christmas!

You will find, in a magical winter atmosphere, Christmas themed products like wooden and tin toys, delicate glass festive ornaments, candles in all shapes and sizes as well as gift ideas of amber and silver jewelry, hand crafted toys, hand-made lace and ceramics. You will also be able to sip a warming *Gluwein* (German mulled wine), enjoy a *Bratwurst* sausage, drink a *Kolsch*, a famous Cologne beer, and taste roasted nuts, gingerbread hearts and many other delicious treats.

On the day of our trip we will be departing from Great Stukeley Village Hall at 11am PROMPT. Our first shopping stop at the historical *Royal Greenwich Covered Market*, arriving at 1pm, will give you the opportunity to do some shopping and have a snack or meal at the vast number of local cafes and restaurants.

This is a fantastic trip planned with you in mind at a price of £39.50 per person which includes the coach, the *Thames river cruise*, the flight on the *London Eye*, visits to both Markets and a tip for our driver.

**Mary Alleyne-James**

Tour Organizer, Tel: 01480 433 954

## **Thursford's Christmas Spectacular 2014 - Sunday 16<sup>th</sup> November 2014**

### **10<sup>th</sup> Anniversary Trip**

With just one month to go count down has started on this year's most exciting *Thursford Christmas Spectacular* with our fifty-strong group on Sunday 16<sup>th</sup> November 2014.

Word has spread of this amazing show and over fifty coaches each day from all over the country converge on this small Norfolk village to attend this outstanding show. Many of the patrons, like ourselves, have visited this superb show year-on-year. Thursford has been a big part of my Christmas Season for TEN YEARS. My files show that I started arranging trips in 2004 so this is a special anniversary year for me.

At Thursford Christmas is in their thoughts all year round, whether there is snow on the ground in mid-winter, the first signs of life in spring, the sun beating down in summer or the leaves falling in the autumn. The annual *Thursford Christmas Spectacular* takes a full twelve months of detailed preparation. This yearly show is THE largest nationally acclaimed Christmas extravaganza in Britain.

On the day of our trip please plan your arrival at The Great Stukeley Village Hall for 9.45am enabling our Kiddles coach to depart at 10am PROMPT. With good travel conditions we should arrive safely in Fakenham, Norfolk at 12.15pm in good time for Thursford's opening at 12.30pm. Several coffee shops are open prior to the show and during the 25 minute interval. Light snacks such as Cornish pasties, heated pies, sausage rolls, soup and sandwiches as well as hot and cold drinks are available.

This year's cover price is £50.00 per person which includes the return coach journey to Fakenham, a tip for the driver and our superbly situated Deluxe Stall Seats in rows A/B/C/D/ and E between numbers 16 and 29 including the front row this year.

**Mary Alleyne-James**  
Organizer - Tel 01480 433 954

---

## **GREAT STUKELEY FASHION SHOW**

### **Friday 6<sup>th</sup> March 2015**

The Great Stukeley Village Hall Committee is sponsoring a FASHION SHOW on Friday 6<sup>th</sup> March 2015 as part of our programme to offer a wide variety of events for our residents, their families, neighbours and friends.

The evening will be professionally organized by *Lincs Fashions* who will be selling ladies fashions from Austin Reed, County Casuals, Marks & Spencer, Next, Wallis and many other brands at HALF PRICE or LESS.

The doors will open at 7pm and the FASHION SHOW will begin at 7.30pm. The show will offer everyday fashions covering all tastes, ages and sizes and all items will be available for purchase on the night.

Tickets are selling fast and we have now pre-booked almost fifty tickets. Tickets for this superb event will be sold on a first come/first served basis at £6.00 per person which includes a GLASS of WINE.

If you are interested and would like to pre-book your ticket(s) please HAND IN TO ME or MAIL the following information:

**NAME, ADDRESS, TELEPHONE NUMBER, NUMBER of TICKETS**

**NO PHONE CALLS PLEASE**

**Mail, or DROP OFF TO:**

**11 Owl End**

**GREAT STUKELEY**

**PE28 4AQ**

**Mary Alleyne-James**  
**Organizer, Great Stukeley**  
**Village Hall Committee**



## THE STUKELEYS WI

### Meeting held on Wednesday 10<sup>th</sup> September 2014

The President, Nicki Sly welcomed 26 members and two visitors to the meeting; 3 apologies for absence were received. Nicki thanked Freda Butter and Nita Charter for the refreshments and Joan Gray for the draw prize. The Curtis Bowl now replaced was shown to members who agreed it had been restored to its former glory. October's refreshments are being provided by Doris Sadler and Marlene Garner. We sang Jerusalem.

The minutes for the July meeting were read out and it was agreed that they were accurate and Nicki should sign them.

The August Community Coffee Morning raised £78.68. Volunteers are still needed to make cakes and help out in the kitchen for the remaining 3 coffee mornings. Nicki proposed that any items remaining unsold from the coffee morning table top sales should be donated to the Marie Curie shop in Huntingdon. Members voted unanimously in favour. Nicki told the meeting that the Committee were sorting out the programme for 2015 and that it would be put to the vote at the October meeting.

Various notices were read out including Centenary Baton week 14-21 October including an Autumn walk, a Tea, Peterborough Cathedral Trip and tour and the Baton Handover. The Centenary Baton Tea is on 18<sup>th</sup> October and names were drawn out of the hat as only two members can go. Nicki read out a thank you letter from Sally Dally regarding cakes for the Abbots Ripton Hall Show. The next Group Meeting is at Godmanchester on 20<sup>th</sup> October – with a talk by Houghton Mill on “Milling through the Ages” followed by a Drumming Workshop. The Competition is “Made from flour” – edible or not. Huntingdon and Peterborough Federation are after nominees to go on their Board of Trustees – no-one put their name forward. Nicki read a letter out regarding the Broadband survey in the Stukeleys – Barrie James needs to hear from users by Sunday 14 September 2014.

Deanna Strange gave the financial statement.

Forthcoming events include Old Time Music Hall at the village hall on 20<sup>th</sup> September and the WI Jazz Evening on 15<sup>th</sup> November also at the village hall. Shirley Berrill asked members to sponsor her relative on the Shine Night Sponsored Walk in aid of Cancer Research UK and Sheila Stephenson urged members to continue knitting or crocheting squares for premature babies. Nicki Sly introduced Mr Mike Petty who read extracts from a book on The Stukeleys Murders and in particular the murder of the Rector of Little Stukeley, Joshua Waterhouse in 1827. Doris Sadler gave the vote of thanks.

The competition was: A story along the lines of Dickens – one side of A4 for which there were 3 entries. 1<sup>st</sup> prize: Sheila Stephenson 2<sup>nd</sup> prize: Judith Wood 3<sup>rd</sup> prize: Betty Aveling. The draw prize was won by Nancy Oldfield.

The next meeting is on **8<sup>th</sup> October 2014 at 7.30pm** Mary Blackhurst –Hill on Scarf-tying. Curtis Bowl: Joan Gray Draw Freda Butter. Competition – a scarf ring Roll Call: if you were an Olympian, what would your sport be?

**Sarah Toyn**

## LITTLE STUKELEY VILLAGE HALL

### Flower Show

The Stukeleys' 55<sup>th</sup> Annual Flower Show was held in the Little Stukeley village hall on Saturday 6<sup>th</sup> September. Thank you to all those committee members and other supporters of the village hall who helped prepare and run the event; also to Adele Dant who helped with recording all the various results, and to Terry Pinner who took the auction. Thanks also to those gardeners and artists who exhibited and to all who joined in the fun. Finally my thanks to the judges: Ted Cooper (Fruit & Veg), Jan Tilden (Home Produce) and Wynn Goulthorpe (Handicraft & Children's). The results of the competitions are below

### RESULTS OF THE COMPETITION

<b>SECTION 1</b>		<b>VEGITABLES</b>	<b>First</b>	<b>Second</b>	<b>Third</b>
1.	Brassica – (2 of any)		J Byrne	T Pinner	
2.	Beans – 5nRunner		J Byrne	T Pinner	J Byrne
3.	Beetroot (Long or Round) - 3		I Shaw	T Pinner	
4.	Carrots - 3		T Pinner		
5.	Courgettes - 3		I Shaw	J Byrne	T Pinner
6.	Cucumbers - 3		T Pinner		
7.	Garlic – 4 Bulbs		J Byrne		
8.	Herbs – collection of 3 types		J Byrne	Shaw	T Pinner
9.	Leeks - 3		T Pinner	J Byrne	
10.	Lettuces (any type) - 2				
11.	Marrows - 2		J Byrne	T Pinner	I Shaw
12.	Onions 4		T Pinner	T Pinner	Mrs J Ball
13.	Potatoes - 4		D Cook	T Pinner	I Shaw
14.	Shallots - 6		T Pinner	T Pinner	Mrs J Ball
15.	Tomatoes - 4		T Pinner	I Shaw	I Shaw
16.	Vegetables – Basket of mixed types		T Pinner	J Byrne	T Pinner
17.	A representative number of any other vegetable		J Byrne	Mrs J Ball	J Byrne
18.	A misshapen vegetable		T Pinner	J Byrne	I Shaw
<b>SECTION 2</b>		<b>FRUIT</b>			
20.	Apples Cooking -4		M Edmondson	J Byrne/A Adams	M Edmondson
21.	Apples Desert - 4		T Pinner	D Middleton	T Pinner
22.	Blackberries - 16		Field	Field	
23.	Figs - 5				T Pinner
25.	Pears - 4		T Pinner	J Byrne	M Edmondson
26.	Plums or Greengages - 8		T Pinner	D Middleton	
27.	Raspberries – 3 sticks		J Byrne		
28.	Rhubarb - 3 sticks		J Byrne		
29.	A representative number of any fruit		I Shaw		
<b>SECTION 3</b>		<b>FLOWERS</b>			
30.	Dahlias, Decorative - 3		D Cook	D Cook/P Belcher	
31.	Dahlias Cactus -3		D Cook	D Cook	D Cook
32.	Dahlias pompom -3			I Shaw	
33.	Vase of Annual Asters		T Pinner		
34.	Vase of Annuals - 2 sprays or 5 Stems of any one variety		P Belcher	I Shaw	J Byrne
35.	Vase of Perennials - 2 sprays or 5 Stems of any one variety		I Shaw	D Cook	I Shaw
36.	Pot Plant - Foliage or Flower (limited to 10 inch pot)		Mrs D Gee	D Cook	Mrs D Gee

37	Hanging Basket	I Shaw		
38.	Roses H.T.s - 3	Middleton		
39	Roses Floribunda - 2 stems			
40	Chrysanthemums – 3 stems			
<b>SECTION 4 HOME-MADE PRODUCE</b>				
41.	Victoria Sandwich			
42	A Chocolate Cake	Mrs T Pinner	Mrs J Ball	A Lorandau
43	Apple Pie	Mrs T Pinner	J Byrne	
44	Scones	Mrs T Pinner	M Edmondson	Mrs J Ball
45	Banana Loaf/Cake	J Byrne	Mrs N Smith	
46	Cupcakes -4	J Byrne	M Brockett	M Brockett
47	Flapjacks - 4	M Brockett	P Glover	
48	A tray bake	M Brockett		
49.	Sausage rolls - 4	Mrs T Pinner		
50.	My favourite Cake	A Lorandau	A Adams	
51.	Jam	Mrs T Pinner	Mrs J Ball	A Adams
52	Lemon Curd	Mrs T Pinner	Mrs G Field	
53	Marmalade	J Byrne	Mrs T Pinner	
54	Chutney/pickles	M Edmondson	J Byrne	Mrs T Pinner
55	Jelly in Plain Jars - min. 5oz	Mrs T Pinner		
<b>SECTION 5 CRAFTS</b>				
56	A miniature flower arrangement	Lorna	Mrs G Belcher	
57	A flower arrangement in an unusual container	Lorna	Mrs G Field	Mrs G Belcher
58	A corsage			
59	Knitted Garment A Dant	Mrs G Belcher	Ms A Hill	
60	Sewn or Quilted Article	Mrs J Kerr	Mrs J Ball	Mrs S Pond
61	Piece of Embroidery and/or Tapestry	M Brockett	Ms A Hill	Mrs J Ball
62	Handicraft	M Brockett	M Brockett	Mrs G Belcher
63	Water-colour or Oil Painting	Mrs G Hassack	Mrs G Hassack	Mrs G Hassack
64	Humorous Photograph	D Robinson	D Bartlett	C Payne
65	Photograph - View	P Belcher	Lorandau	
66	Photograph - Portrait	P Belcher	P Belcher	P Belcher
<b>SECTION 6 FOR CHILDREN</b>				
67	A tray garden	A N Lorandau	Ash Lorandau	
68	A Mask	A N Lorandau	Ash Lorandau	
70.	An animal made of foil	Ash Lorandau	A N Lorandau	
71	A junk picture	Ash Lorandau	A N Lorandau	
72	Make & Decorate 4 biscuits	Leah Smith		
73	A Lego monster	Ash Lorandau	A N Lorandau	
74	A glove puppet	AN Lorandau/ As Lorandau		
75	A Leaf picture	A N Lorandau	Ash Lorandau	
76	A Birthday card	A N Lorandau		

#### **CUPS AND TROPHIES**

The Dant Plate for the most points in Classes 1 - 18

The Rose Bowl for the most points in Classes 19 - 31

The Village Hall Trophy for the best exhibit in Classes 1 - 31

The Georgian Bowl for the most points Classes 32 – 46

The Children's Cup for the most points in Classes 58 – 66

The Burton Cup for the Best Exhibit of Tomatoes

The Stanyon Cup for the Best Exhibit in Classes 47 – 54

Fo-To will be presented for the best photograph

T Pinner

D Cook

Mrs D Gee

Mrs T Pinner

Annalise Lorandau

T Pinner

M Brockett

P Belcher



The Stukeleys Women's Institute invite you to  
**An Evening of  
Light Jazz, Pop, Latin, Classical and  
Folk Music**

**Featuring Three plus One Saxophone Quartet and the exciting new  
sound of a previously unheard orchestra**

**On Saturday 15<sup>th</sup> November 2014 at 8pm  
at Great Stukeley Village Hall  
Tickets include one glass of wine and nibbles**



**Tickets priced £8 and are available from Nicki Sly 07979 298145 or  
Sarah Toyn 07961 358067 [sarah.toyn@yahoo.co.uk](mailto:sarah.toyn@yahoo.co.uk)**

---



**Community  
Coffee Morning**

**Wednesday 29 October 2014**

**10.30 – 12.00**

**At Great Stukeley Village Hall**

**And the last one will be on Wednesday  
26 November 2014**

**The Stukeleys WI are holding a community coffee morning every last Wednesday of the month to  
raise money for the Woodlands Centre at Hinchbrook and the WI.**

**Do come and join us - all welcome.**

## **Alpaca Poop For Sale**

**Alpaca Manure consists of small oval droppings resembling beans and are known as "Green Beans" within the Alpaca breeding industry. With three stomachs to process food the alpaca diet of grass hay, vitamins, minerals and fresh water moves efficiently through from product to poop.**

**We have a poop collector which mulches the beans into a compost which can be applied directly to the soil and dug in straight away.**

**Price is £2.75 per bag**

**If you return the bag we will return 25p.**

**For more information contact:**

**Jaron or Nicki Sly**

**at 23 Green End, Great Stukeley**

**01480 412262**

---

## **Independent Living Fund (ILF) closure, June 2015**

The Independent Living Fund (ILF) aims to support long term, independent living for severely disabled people by helping them to live at home instead of in residential care. In March 2014, the Government announced that it will be closing on 30<sup>th</sup> June 2015 when the County Council will take over responsibility for meeting the eligible care and support needs of ILF users. The County Council and ILF are working closely together to make sure the transfer of responsibility for funding arrangements takes place as smoothly as possible. The ILF website [www.dwp.gov.uk/ilf](http://www.dwp.gov.uk/ilf) includes more information about the programme's closure, or you can phone the County Council's Customer Services on 0345 045 5202 with any questions.

The ILF is no longer accepting any new applications.

Little Stukeley Village Hall

### **CASINO NIGHT**

**Saturday 18<sup>th</sup> October 2014 at 19:30**

Tickets £12.00

from **Mrs Sally Smith Tel: 01480-450356**

**or email: [sallysmith101@aol.com](mailto:sallysmith101@aol.com)**

Licensed Bar (including spirits)



# PARISH COUNCIL FREE KERBSIDE COLLECTION OF ALL ELECTRICAL APPLIANCES

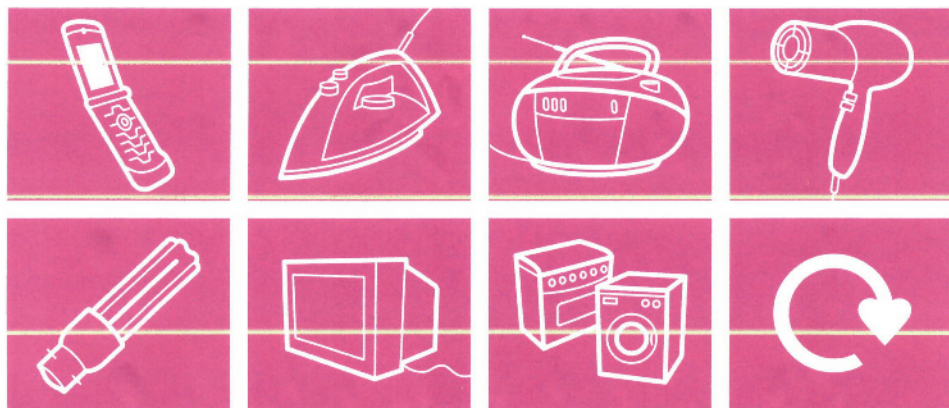


Please recycle your waste electrical items (WEEE) and help this community.

Date of next collection: Tuesday 4th November 2014 - FROM 08:00

Details: Please place all your electrical waste kerbside by 10am. ON THE DAY.  
It will be collected and recycled. The parish council will receive  
revenue for all WEEE collected for use on community projects.

- ✓ WASHING MACHINES, COOKERS, FRIDGES, TELEVISIONS & IT EQUIPMENT\*
- ✓ MOBILE PHONES AND OTHER TELEPHONES
- ✓ TOASTERS, KETTLES AND OTHER KITCHEN AND HOUSEHOLD APPLIANCES
- ✓ CLOCKS, RADIOS, CAMERAS
- ✓ VIDEO RECORDERS, GAMES CONSOLES, MUSIC SYSTEMS
- ✓ DRILLS AND OTHER POWER TOOLS
- ✓ ALL TYPES OF LIGHTBULBS & TUBES



\* With larger appliances we can assist with moving them from your property to our vehicle.

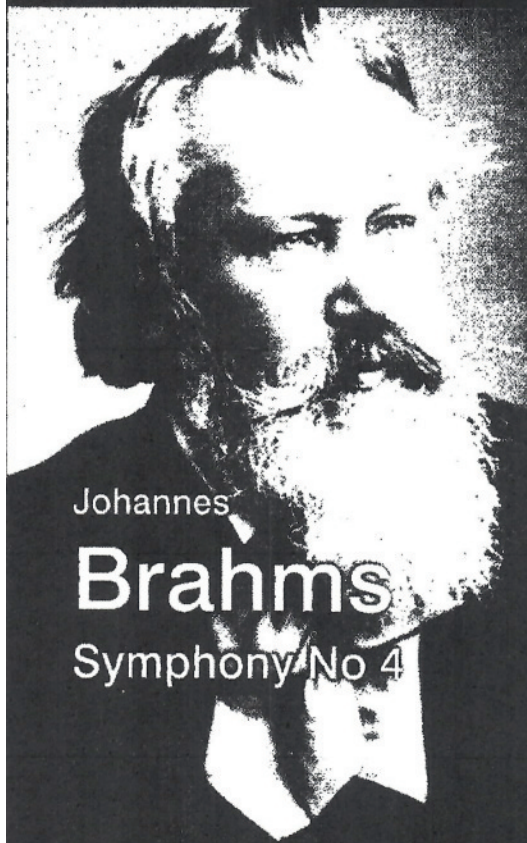
Please do not cause an obstruction to the pavement by leaving these large items kerbside.

WEEE Materials are accepted directly at our Re-Use & Recycling Facility at: 11 Caxton Rd, St Ives, PE27 3LS



Conductor: Steve Bingham

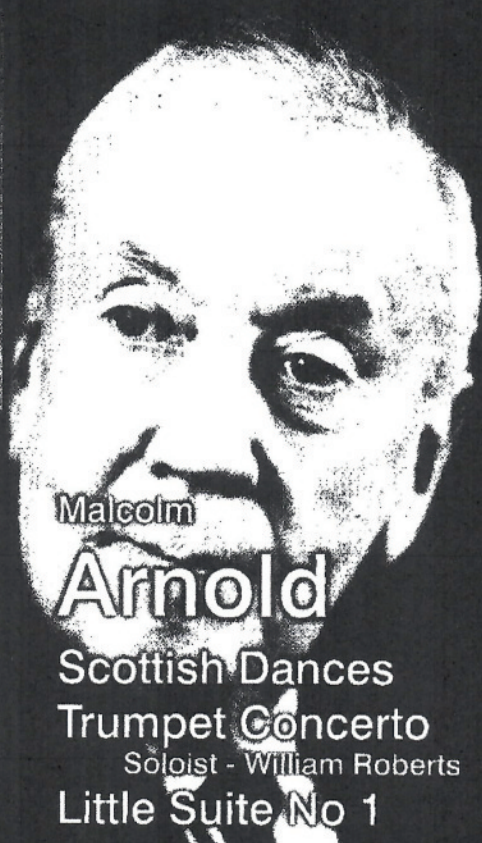
# AUTUMN CONCERT



Johannes

## Brahms

Symphony No 4



Malcolm

## Arnold

Scottish Dances

Trumpet Concerto

Soloist - William Roberts

Little Suite No 1

## Sunday 19th October 2014

3 pm - Voyager Concert Hall

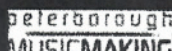
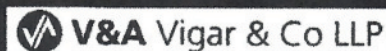
Mountsteven Avenue, Walton, Peterborough PE4 6HX

Buy your tickets from: [www.cpso.org.uk](http://www.cpso.org.uk)

or: Visitor Information Centre, Bridge St. Tel: 01733 452336

£12:50 full, £10:50 Concession (accompanied schoolchildren free)

Supported by:



Reg. Ch. no. 1049573

GREAT STUKELEY VILLAGE HALL COMMITTEE

INVITES YOU TO A

# **BLACK AND WHITE THEMED CHRISTMAS DINNER DANCE**

**On Saturday 20<sup>th</sup> December at  
7 for 7.30pm - Midnight**



**Tickets are only £20 and include a 3 course meal and entertainment provided by fabulous local vocalist Steve Lake who will perform a variety of music including motown, swing, soul, rock & pop**

**There will be a raffle but no licensed bar so bring your own drinks and glasses. Dress code: Black & white.**

**Tickets available from Carol Buttercase  
01480 458089**



# AGC SERVICES



**Provides:**

**Boiler Servicing & Installation**

**Help if you have Central Heating Problems**

**Electrical Installation & Fault Finding**

**Fully Gas Safe Registered & Corgi Electrical Registered**

**Domestic and Commercial**



**For Friendly Advice on Heating, Gas and Electrical Problems**

**Call Nino on:**

**01480 412483 or 07786 437126**

**Or Email [augustingaetano@talktalk.net](mailto:augustingaetano@talktalk.net)**

## Need glasses?



**Buy direct from the Specs Manufacturer**

**Save up to 75%**

**Especially on High/complex prescription:**

- Single Vision Specs from just £9\*
- Bifocals Specs from £39\*
- Varifocal Specs from £59\*
- Reglaze your own frame save ££\*
- Emergency Specs & repairs\*
- Premium frames & lenses at low prices
- Large selection of frames in stock

(\*T & C's apply, please ring for details)



*Spectacle Makers*

*...why pay more?*

*Just bring in your prescription for a TOP QUALITY bargain.*

**Visit our Factory Shop:**

**20 Norman Way Ind. Park  
Over, Cambridge CB24 5QE**

**Tel: 01954 231545 or 07824 706969**

**Email: [info@all-eyes.co.uk](mailto:info@all-eyes.co.uk)**

**Website: [www.all-eyes.co.uk](http://www.all-eyes.co.uk)**

**Factory Opens: Mon - Fri 9.00am to 5.00pm**

**(Shop opening times may vary, please check to avoid disappointment)**

# M&D FLOORING

A Family Run Business With Over 30 Years Experience

- CHOOSE SAMPLES IN THE COMFORT OF YOUR OWN HOME
- ALL FLOORING SUPPLIED AND FITTED AT COMPETATIVE PRICES
- DOMESTIC AND COMMERCIAL INSTALLATIONS
- UPLIFT AND DISPOSAL OF OLD FLOORING
- FURNITURE MOVING SERVICE AVAILABLE

- CARPETS
- VINYL
- LAMINATES
- SOLID WOOD FLOORING
- LUXURY VINYL TILING
- ENGINEERED WOOD FLOORING

To make an appointment please call

Matthew Mob: 07871 277244  
Eve: 01487 812825

David Mob: 07711 744625  
Eve: 01480 454752

Visit us at [www.CarpetsVinylsandWoodenflooring.co.uk](http://www.CarpetsVinylsandWoodenflooring.co.uk)  
Email: [info@CarpetsVinylsandWoodenflooring.co.uk](mailto:info@CarpetsVinylsandWoodenflooring.co.uk)



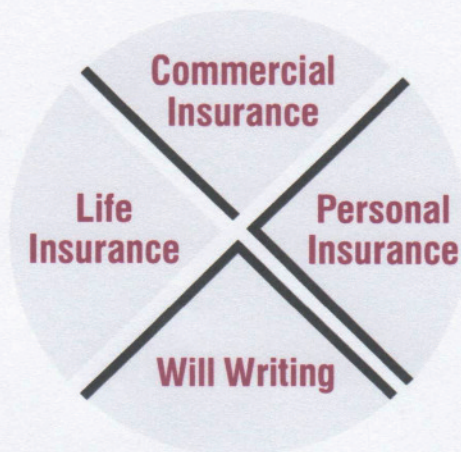
## STUART & Co.

**INSURANCE CONSULTANTS,  
WILL WRITING & PROTECTION**

We all put off making or updating a Will *but it is* an important document that ensures your wishes are carried out as you want.

Confidential appointments can be arranged either at your home or at our office in Huntingdon.

For a free conversation about your needs please speak to our in-house Will Writer - Gordon Jackson on 01480 433443  
email [gordon@stuartandco.co.uk](mailto:gordon@stuartandco.co.uk)  
visit us at [www.stuartandco.co.uk](http://www.stuartandco.co.uk)





## STUKELEY'S COUNTRY HOTEL

Telephone 01480 456927

Food served 12.00-2.30.00pm and 6.00-9.00pm

Sun 12.00 - 3.00pm and 6.00- 9.00pm

*Don't forget we have a special board with our daily specials  
and ,also a FISH SPECIAL every week-end*

### CURRY WEEK

13<sup>TH</sup> -19<sup>TH</sup> OCT

3 COURSE SET MENU £12.95

### BRITISH SAUSAGE WEEK

COME TRY OUR DIFFERENT CHOICE OF SAUSAGES

3<sup>RD</sup> -9<sup>TH</sup> NOV

*Special offers, House red /white wine, buy two  
glasses get the rest of the bottle FREE*

**£5 OFF**

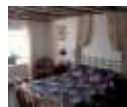
#### A MEAL FOR TWO AT STUKELEY'S HOTEL

Complete your details and present this voucher  
(USE FOR MAIN MEALS ONLY)

Name:.....

Address:.....

This voucher is not valid in conjunction with any other  
Special promotion. Valid until Nov 2014



## Step by Step

*...we'll lead the*

### Ballroom & Latin American Dance Classes

#### Adults

Monday evenings : Bluntisham Village Hall

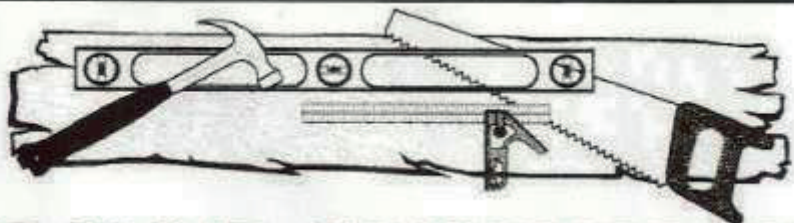
Thursday evenings : Alconbury Memorial Hall

Friday evenings : Houghton & Wyton Memorial  
Hall

*Private Lessons by arrangement for  
General Improvement - Medal Tests - Wedding Dance*

For further information  
email : [enquiries@stepbystepballroom.co.uk](mailto:enquiries@stepbystepballroom.co.uk)  
telephone : 07876 130037  
[www.stepbystepballroom.co.uk](http://www.stepbystepballroom.co.uk)





# DAVID HUMPHREY

**Carpenter & Joiner**

21 Lake Way, Stukeley Meadows, Huntingdon, Cambs PE29 6SU

VAT Registration No 759 633 89

Small works  
Fitted kitchens  
Loft conversions  
Windows & Doors  
General property repairs

Call today for a free quotation.

Tel: 01480 432275 Mob: 07788 428580 Fax: 01480 451566

## The UK's No.1 Lawn Care Company



- Scarification
- Aeration
- Lawn Fertilising
- Weed Control
- Moss Control
- Water Conserver
- Pest and Disease Management



GreenThumb has a variety of treatment programmes to suit your pocket that include our traditional 'pay-as-you-go' service and our new, pay monthly, Direct Debit programmes, where you can save up to 25% annually.

Our treatments start from £5 per month, that's cheaper than D-I-Y and without the hassle!

Call your local branch today for a FREE lawn analysis and no obligation quote.

**0800 0111 222**

**GreenThumb**  
LAWN TREATMENT SERVICE



Find us online at: [www.greenthumb.co.uk](http://www.greenthumb.co.uk)

**Now is the time to consider your heating oil requirements for the winter months. Traditionally heating oil prices in the summer and early autumn months tend to be cheaper and deliveries faster than in the colder weather.**



Cambridgeshire ACRE's community oil buying scheme is designed to help purchasers of central heating oil to make savings by buying in bulk. The scheme is open to anyone in Cambridgeshire and Peterborough. Community buildings such as churches and village halls as well as businesses which are reliant upon heating oil can join too. The annual membership fee for domestic users is £20 and covers as many oil orders as you need during the course of the year.

Through our partnership with AF Affinity Limited, a subsidiary of Anglia Farmers Limited, the leading agricultural purchasing co-operative in the United Kingdom, the scheme makes the most of collective purchasing power.

The average saving is usually 2pence per litre against online prices. In July and August this year members who ordered oil in these months got it at less than 50pence per litre (exclusive of VAT at 5%). The environment benefits too as every time a tanker comes out to make a delivery, it is using a lot of diesel – a full tanker can get as little as a horrifying 8 miles per gallon. If deliveries are organised so that one tanker delivers to several customers in a village, instead of making lots of individual deliveries, the fuel consumption is reduced and so is traffic in the village.

**There are five easy steps to cheaper heating oil:**

- **Step 1: Join the Cambridgeshire ACRE Community Oil Buying Scheme**

Complete a membership form or apply online and then set up a direct debit to pay for your future oil purchases.

- **Step 2: Receive a reminder to check your oil levels**

Each month, we'll remind you to check your tank and notify you of the deadline to place an order. The minimum order is 500 litres.

- **Step 3: Place your order online**

Use our online portal to let us know how much oil you want to buy. Your order increases our negotiating power, so once submitted we regard it as binding.

- **Step 4: Sit back whilst our negotiators get the best possible price**

AF Affinity Ltd negotiate the best price from a range of suppliers. We advise you who the supplier is, the price per litre (exclusive of VAT, currently at 5%) and the approximate date of delivery.

- **Step 5: Take delivery of the oil and pay the company**

The oil will be delivered as soon as possible and your bank account is debited with the amount you owe.

To find out more about the Cambridgeshire ACRE Community Oil Buying Scheme go to our website [www.cambsacre.org.uk](http://www.cambsacre.org.uk) or contact Julie Weekes on 01353 860850 email [oil@cambsacre.org.uk](mailto:oil@cambsacre.org.uk)



## **A. DYOS LTD**

**Multi Trade Handyman Services**

**Family Run Business Established Over 25 Years**

**All Building Trades Covered**

**Carpentry, Plumbing, Plastering, Decorating etc.**

**No Job Too Small, Free Estimates & Advice**

**Tel: 01480 450107 / Fax**

**Mob: 07958 493555 / 07985 634569**

**Email: [dyos3@hotmail.com](mailto:dyos3@hotmail.com)**

**THE CHURCH OF  
JESUS CHRIST OF LATTER DAY SAINTS.  
ERMINE STREET, GREAT STUKELEY,  
NEXT TO THE VILLAGE HALL.**

**Bishop Matthew Wade**

---

**Sunday Services**

10.00am to 11.15am Sacrament Meeting

11.15am to 12 noon Sunday School Classes for 12 years old and over.

11.15am to 1pm Primary For under 12 year olds, and Nursery for 18 month old to 3 years old.

12 Noon to 1pm Relief Society Meeting for Sisters 18 years and over(Women)

12 Noon to 1pm Priesthood Meeting for Brothers 18 years and over(Men)

12 Noon to 1pm Young Men and Young Women Classes for 12 to 18 year olds.

**All are welcome to come and join us.**

**Weekday Meetings**

Every Tuesday:

Youth Meetings for 12 to 18 year olds from 7.30pm to 8.30pm

First Wednesday of each month:

Sisters Meeting from 7.30pm to 9pm



# GRACE FELLOWSHIP

*An International English Speaking Baptist Church for Everybody*

**Love God: Love People: Care for the World**

*'The Lord is my Shepherd, I shall not want.' Psalm 23 : 1*

Why not come and join us? A warm welcome always awaits you. All of our meetings are open to you.

Every Sunday	9.45 am	All Age Bible Study
	11.00 am	Worship Service
	3.00 pm	Afternoon Worship at Great Gidding Baptist Church
Every Wednesday	7.00 pm	Prayer Meeting
Saturday 11 <sup>th</sup> October	9.00 am	Men's Breakfast Fellowship All Men Welcome. Bring a friend or two!!
2 <sup>nd</sup> Sunday each Month	1.00 pm	Pot Luck Lunch at the Church after Morning
Worship followed by .....		

If there is any way in which we can help or any questions you need to ask please call Pete and Penny Bourne on 01480 432207 or 07887707940 / 07908093224 or email us at [bourneagain38jer333di@gmail.com](mailto:bourneagain38jer333di@gmail.com) or [pennyanne.bourne@gmail.com](mailto:pennyanne.bourne@gmail.com) or phone David Stokes on 01480 891023 and we will do our very best to help. If you need help with transport to any of the meetings just call Pete or Penny as above. If you would like more information about Grace Fellowship visit our website, [www.gracefellowshipbaptist.co.uk](http://www.gracefellowshipbaptist.co.uk) and please visit our Facebook Pages for Grace Fellowship and Great Gidding Baptist Church.

How important are your neighbors to you, in this day we here of children being abused or neglected, elderly robbed beaten even killed in their homes. I don't think this happens because we don't care often it is we are not watching out of our windows, afraid of being called nose. Or do we think someone else will report it. The problem is if we all leave it to Mr. No-one or Mrs someone-else who will report these things, yes we will get things wrong better that than someone robbed or killed. The Bible tells us that we should love our neighbors the very least we can do is keep an eye out for them. One of the miracles we read of in the Gospels we are told that four friends carried a fifth man to Jesus to be healed by him when they got there, Mark's gospel tells us that they could not get close to Jesus so they climbed on the roof and lowered their friend trough so that Jesus could heal him. Now we could do with a few more friends like that to day those are willing to go the extra mile for someone. I know there are many really good people living in the Stukeleys I just hope we will all keep our eyes open for those around us to keep people safe. May God bless you all.

**Pastor Pete Bourne**



# CHURCH SERVICES



**ST BARTHOLOMEW'S  
GREAT STUKELEY**



**ST MARTIN'S  
LITTLE STUKELEY**

<b>October</b>				
5th	9.30 am	Holy Communion CW		<b>No Service</b>
Sixteenth Sunday after Trinity	Celebrant	Rev'd Clifford Owen		
12th	8.00 am	Holy Communion CW		<b>No Service</b>
Seventeenth Sunday after Trinity	Celebrant	Rev'd Andrew Milton		
	9.30 am	Family Service		
	Leader	Janet Talbot		
19th	9.30 am	Holy Communion CW	8.00 am	Holy Communion
<b>Harvest Festival</b>	Celebrant	Rev'd Philip Swindells	Celebrant	Rev'd Andrew Milton
Eighteenth Sunday after Trinity				
26th	9.30 am	Morning Prayer	9.00 am	Holy Communion
Last Sunday after Trinity	Leader	Alan McGoff	Celebrant	Rev'd Andrew Milton
<b>November</b>				
2nd	9.30 am	Holy Communion CW		<b>No Service</b>
<b>All Saints Day</b>	Celebrant	Rev'd Brian Hyder-Smith		
Fourth Sunday before Advent				
<b>WHO's WHO IN THE CHURCHES</b>				
Churchwardens				
	Richard Turpin		Sue Pond	
	Montagu House		Church Way	
	1 Church Walk	Great Stukeley	Little Stukeley	
	Harry Raby		Camilla Payne	
	Brookfield Farm		Old Rectory, Church Way	
	Great Stukeley		Little Stukeley	
Secretary of the Parochial Church Council	Alan McGoff		Camilla Payne	
	4 Seathwaite		Old Rectory, Church Way	
	Stukeley Meadows	Huntingdon	Little Stukeley	
Vice Chairman of the Parochial Church Council	Richard Turpin		Jocelyn Kerr	
	Montagu House		2 Mill Close	
	Church Walk	Great Stukeley	Little Stukeley	
	Tel: (01480) 456476		Tel: (01480) 453213	
	Fax: 07092 365508			
Rector				
	Rev'd Andrew Milton			
	Tel: (01480) 412674			

# Independent Financial Advice

01480 451 412

[www.huntsifa.co.uk](http://www.huntsifa.co.uk)



**We specialise in helping people aged 60 plus make the right decision in the following areas;**

- **Equity Release**
- **Impaired Annuities**
- **Pension Transfers**
- **Long Term Care**

- **Is this how you feel when faced with a financial decision?**
- **One which you do not really have the skill or knowledge to decide upon?**

**Don't leave one of the most important decisions of your life to luck;  
speak to the specialist  
NOT**

**'Dom down the Pub' or  
'Beryl-Ann in the Hairdressers'!**

**We have 21 years experience  
and 1,000's of satisfied clients**

**Ring us on  
01480 451 412  
for a free interview  
to discuss your needs.**



**positive**solutions®  
altogether individual

**3 Royal Oak Passage High Street Huntingdon Cambs PE29 3EA 01480 451 412**



*"If you want the best from yourself, invest in yourself!"*

**Relaxation, Wellbeing**  
Injury Prevention & Rehab

**Relieve: Pain, Muscle Tension,**  
**Headaches, Stress, Repetitive Strains**

Improve: Flexibility, Back Stiffness,  
Circulation, Performance



Treatments  
for:  
Individuals  
Sports Clubs  
Corporate



Locally Based & Mobile

**Zestsportsandspa.com**

**Contact Clare 07738 424079**



Going to the  
**airport?**

Take the stress out of getting  
there with an executive chauffeur  
driven car you can rely on to be  
**on time, every time**

- 24 hour Duty Manager
- Live flight monitoring
- Complimentary travel packs
- E-mail and text confirmations

Call **01480 890200** or visit  
**www.flexecars.co.uk**

FlexEcars is part of the **Flex-Able Group**,  
30 Edison Road, St Ives, PE27 3LF. Est. 1994

## Your Local Printer

- Business Cards
- Leaflets
- Flyers
- Forms
- Booklets
- Tickets
- And so much more...

**NOW  
PRINTING  
CLOTHING**

**www.easiprint.biz**

**01480 718270**

**FREE DELIVERY**

**easiprint**

23 Levellers Lane Ind Est, Eynesbury, St Neots, Cambs, PE19 2JL

**R&R**  
DECORATING  
OF SAWTRY

**Shortly to change name to:**  
**Alconbury & Weald Decorating Services**

**A Local Qualified Decorator**  
**Reasonable Rates - Reliable**

**Insurance Work undertaken - Internal & External Decorating**  
**Painting - Wallpapering - Coving - Property Maintenance - Roof**  
**Maintenance - Gutters also cleaned, repaired or replaced**

**Local References on request**

**Give Rob a call on 07971 337581 or 01480 891961**

**Or email: r.bates01@btinternet.com**

