



Including **Alconbury Weald**

# NOVEMBER 2022



See Page 9

# Let us transform the quality of your lawn!



Aeration  
Scarification  
Overseeding  
& More

- ✓ Greens up and thickens the lawn
- ✓ Removes weeds and minimises moss
- ✓ Completely safe for children and pets
- ✓ Locally owned and operated business
- ✓ Regular personalised treatments
- ✓ No contract - Direct Debit available



**FREE Lawn Analysis: 01767 651 639**

[www.greensleeves-uk.com](http://www.greensleeves-uk.com) • Email: [hunts@greensleeves-uk.com](mailto:hunts@greensleeves-uk.com)

# December 2022 Magazine Cut-off Date

Cut-off date for the December 2022 Stukeleys Parish Magazine is

## 9am Friday 18<sup>th</sup> November 2022

\*\*\*\* Please do not be late \*\*\*\*

### FUTURE EVENTS

|                                 |   |
|---------------------------------|---|
| <b>November 6<sup>th</sup></b>  | 9.30 am Holy Communion, Great Stukeley  |
| <b>November 11<sup>th</sup></b> | 7.00 pm Beetle Drive in Great Stukeley Village Hall   |
| <b>November 13<sup>th</sup></b> | 9.30 am Service of Remembrance, Gt Stukeley; followed by  |
| <b>Remembrance Sunday</b>       | Act of Remembrance at Gt Stukeley War Memorial<br>and an Act of Remembrance at Lt Stukeley War Memorial |
| <b>November 20<sup>th</sup></b> | 9.30 am Morning Service, Gt Stukeley  |
| <b>November 27<sup>th</sup></b> | 9.30 am Holy Communion for Advent, Lt Stukeley  |
| <b>Advent Sunday</b>            | 11.00 am Holy Communion for Advent, Gt Stukeley   |

Take a look at the Magazine website at [www.stukeleymag.co.uk](http://www.stukeleymag.co.uk)

Email to: Martyn at [martyn@stukeleymag.co.uk](mailto:martyn@stukeleymag.co.uk)

Post/drop in to: 7 Hill Close, Great Stukeley PE28 4AZ

Tel: 01480 432633 Mob: 07710 171924

Please include your phone number in case of queries.

Space in the magazine is limited, so articles should be about 300 words. This is to allow as many people as possible the opportunity to contribute to the magazine. It would be helpful if you could submit articles sized to an A5 page in Word or PDF.

We reserve the right to refuse an article, cut its length or hold it over to a later issue without notice.

**Please Note:** This magazine is published by Martyn Fox with administrative and financial support from The Stukeleys' Parish Council. The opinions expressed are not necessarily those of the Editor or of the Parish Council

**A charge is made to advertise in this magazine. All enquiries should be directed to Martyn Fox (Tel: 01480 432633) or Emily Pacey, (Parish Clerk) Email: [clerk@thestukeleys-pc.gov.uk](mailto:clerk@thestukeleys-pc.gov.uk)**

### This Month

|                   |   |
|-------------------|---|
| <b>Page 4:</b>    | Parish Council Report                             |
| <b>Page 5:</b>    | Great Stukeley Village Hall Regular Activities    |
| <b>Pages 6/7:</b> | LTCP Update                                       |
| <b>Page 8:</b>    | WI Report   |
| <b>Page 9:</b>    | Stukeley Hotel & Pub News                         |
| <b>Page 11:</b>   | St Bartholomew's Church Harvest Festival Lunch    |
| <b>Page 12:</b>   | Community Coffee Morning                          |
| <b>Page 13:</b>   | Friends of Hinchingsbrooke Hospital Afternoon Tea |



## **Stukeleys Parish Council Meeting held on 3<sup>rd</sup> October 2022 at 19.15pm at Great Stukeley Village Hall.**

In the absence of the Chairman (unwell) and Vice Chairman (holiday) the meeting was Chaired by Cllr. Glyn Evans, other Cllrs present Cllr P Digby, Cllr P Pearce, Cllr S J Gaule, Cllr S Mcadam & Cllr A Blackwell (District), Cllr T Sanderson (County) and Emily Pacey – Clerk and Responsible Financial Officer

**Pocket Park** – the SPC have now received a Certificate of Lawful Development, this will allow the application to move to the next step, the PC planning adviser will keep the Council updated.

**20mph Speed Limit Alconbury Weald** – a proposal to implement 20mph on local roads on Alconbury Weald was discussed but as the roads are yet to be adopted this will remain as work in hand, Urban and Civic are in support of double yellow lines in certain areas.

**Use of public buildings** – Cllr Pearce advised he has been looking into the use of public buildings and advised there is interest to hold an open day to help and assist residents regarding financial problems. He has spoken to CAB, Christians Against Poverty, HDC, Anglian Water and Electric companies, and they are all in favour of this idea and would attend. The clerk advised this will be added on the agenda for November.

**Report and update on Neighbourhood plan.** The neighbourhood plan is going through its final consultation and Cllr S Burton have agreed and appointed an examiner to examine the plan in its entirety. The consultation ends on the 10th November, an update will be at December's PC meeting.

**Report and update on Little Stukeley Village Hall.** Cllr Gaule advised Little Stukeley Village Hall has appointed a new committee and they have had their first AGM meeting. It was agreed and approved for the quotation of Little Stukeley Village Hall extension. Members of the council raised their concerns that the quotation has increased significantly from the previous quotation received in 2018. It was agreed for Cllr Gaule to obtain a detailed project plan which will include timescales and warranty of the quotation and works for the next PC meeting.

**Electronic speed signs** – the clerk advised the brackets for the speed sign that was damaged by a lorry have been delivered and an insurance payment has been received.

**Date of next meeting** is 7<sup>th</sup> November 2022 – The Club 4 Meeting Room, Second Floor, Alconbury Weald.



# GREAT STUKELEY VILLAGE HALL

TO BOOK GREAT STUKELEY VILLAGE HALL PLEASE CALL:

CAROL REILLY BOOKING CLERK ON 07934 853646

([bookings@gsvh.org.uk](mailto:bookings@gsvh.org.uk)) OR GO ONLINE AT

[www.greatstukeleyvillagehall.co.uk](http://www.greatstukeleyvillagehall.co.uk)

## REGULAR ACTIVITIES

| DAY   | ACTIVITY                             | TIME                  | ORGANISER                            |
|---|--------------------------------------|-----------------------|--------------------------------------|
| <b>MONDAY</b>                                     | KARATE                               | 5.30 – 7.30 pm        | LUCIAN<br>07549 916200               |
| <b>TUESDAY</b>                                    | JAZZERCISE                           | 7.00 – 8.00 pm        | VIKKIE<br>STEVENSON<br>07735 990653  |
| <b>WEDNESDAY</b><br>2nd Wednesday in<br>the month | THE STUKELEYS<br>WOMENS<br>INSTITUTE | 7.30 pm –<br>10.00 pm | SHEILA<br>STEPHENSON<br>01480 456634 |
| 4 <sup>th</sup> Wednesday in<br>the month         | CRAFT CLUB                           | 2.00 pm – 4.00<br>pm  | CAROL<br>BUTTERCASE<br>01480 458089  |
| Last Wednesday in<br>the month                    | COMMUNITY<br>COFFEE<br>MORNING       | 10.30 am - 12<br>noon | JANET SLY<br>01480 450197            |
| <b>THURSDAY</b>                                   | BADMINTON                            | 10.00 am – 12<br>noon | PRIVATE<br>BOOKING                   |
|   | TAE KWON-DO                          | 6.00 pm – 8.00<br>pm  | MARK FARNHAM<br>07771 644460         |
| <b>FRIDAY</b>                                     |                                      |                       |                                      |
| <b>SATURDAY</b>                                   |                                      |                       |                                      |
| <b>SUNDAY</b>                                     | PENTECOSTAL<br>CHURCH                | 10.30 am –<br>1.00 pm | ERNEST<br>07464 544385               |



## LTCP Update Newsletter

The public have had their say in our summer consultation on the draft Local Transport and Connectivity Plan (LTCP). The consultation ran from May to August and we are now analysing the responses.

People could provide their responses to us via a consultation website, at one or more of our 13 consultation events across the region, or via post.

We also spoke to businesses, universities and colleges, local councils and charity groups. We have gathered a large amount of feedback which will be used to improve the final LTCP. Every piece of feedback received is being read and considered.

While we continue to analyse the responses, we wanted to update you on some of the feedback so far and next steps for the plan.

In due course we will be setting out how the final LTCP document will reflect the consultation feedback. This newsletter contains a summary of the consultation feedback received, together with information on next steps.

### What is the LTCP?

The Cambridgeshire & Peterborough Combined Authority is required by law to make and maintain a Local Transport Plan for the region. It sets the long-term strategy to improve transport in the region. All future transport projects for Cambridgeshire & Peterborough will be guided by the plan. They include projects by local councils and partners like the Greater Cambridge Partnership. This plan will also be submitted to Government.





The region's first Local Transport Plan was put in place in early 2020. Since then, many changes have taken place locally and in the wider world which means the plan needs an update.

These include the impacts of Covid-19 on travel and new and developing policies on tackling climate change. The Combined Authority has also incorporated the word 'connectivity' in the name of the plan, due to how the internet has changed the way people travel.

For example, many more people work or learn from home. There is more online shopping, and more leisure and entertainment is now offered digitally, resulting in fewer journeys.

Others use their phones and other devices to buy tickets and check travel information on the go.

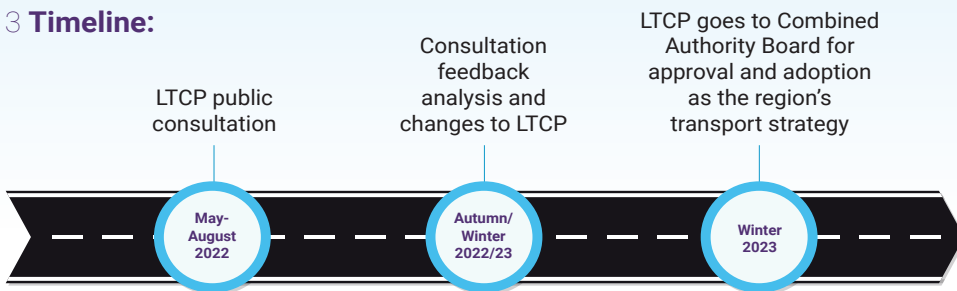
## 1 Feedback on the LTCP so far:

|   |  |  |
|---|--|--|
|  <p>Over 57% of the public either strongly agreed or mostly agreed with the LTCP vision.</p> | <p><b>66%</b></p> <p>either strongly agreed or agreed with the LTCP proposal to cut the number of miles driven on roads by 15%.</p>  |  <p>Bus routes and frequency were the highest priority in the region.</p> |
|  <p>In Cambridge, reducing congestion in the city was the priority.</p>                      |  <p>Climate change, protecting the environment and better public health were the most strongly agreed-with LTCP objectives.</p> | <p><b>97%</b></p> <p>of the public understood why a new vision for transport was needed.</p>   |

## 2 As well as commenting on the LTCP, we asked for general comments on how to improve transport. Some of the key themes emerging are:

- Need for improved cycling and walking links
- A need to reduce car usage
- More frequent transport services
- A need for better rural transport services
- Suggestions for new train stations and lines
- Suggestions for new bus routes in specific locations

## 3 Timeline:



You can find out more about the LTCP at [www.yourltcp.co.uk](http://www.yourltcp.co.uk)

Read the draft LTCP which was consulted on in the summer:  
<https://yourltcp.co.uk/wp-content/uploads/2022/05/Draft-LTCP.pdf>

Got a question? Email [contact@yourltcp.co.uk](mailto:contact@yourltcp.co.uk)



**Apologies** 6 apologies received.

Sheila welcomed the 17 members attending.

**Thanks** to Zena Betts for Curtis Bowl and Ann Monk for the Draw Prize.

**Jerusalem** was sung

**Minutes of September Monthly Meeting** were agreed and signed.

**Matters Arising:**

Sheila introduced our guest – Phyllis Brookes, Federation Chairman from the WI Federation Headquarters in Walden Road. Sheila told everyone about the fascinating Red Arrows talk she recently attended there.

The Group meeting feedback was discussed by all present. The USAF speakers were excellent and very informative. The choir was slightly disappointing as we were not expecting a programme of gospel music. Sheila thanked everyone for their help with the Group meeting. The members present were asked if they would like to attend a festive meal in at a local restaurant after Christmas and have a Christmas Quiz, cake, sherry and a sing along for the December meeting. This was given a full show of hands.

Monica Brown will make one of her lovey Christmas cakes for the December meeting.

**Correspondence:** Newsletter was emailed out.

Members were emailed upcoming events at Walden Road:

Coffee morning 2<sup>nd</sup> November 10.00 to 12.00

Christmas Fayre 19<sup>th</sup> November 10.00 to 1.00pm

Resolution conference Thursday 24<sup>th</sup> November – Zoom 7pm or Saturday 26<sup>th</sup> November 10.30am

**Speaker:** Neil Callan – The Making of a Fenland Garden. Neil gave an informative and humorous talk about his huge garden along with beautiful slides of plants and wildlife. This is open to the public from May to July.

**Refreshments** were served.

**Competition results** :1<sup>st</sup> Jan Sly, 2<sup>nd</sup> Marlen Garner, 3<sup>rd</sup> Jill Sapsed

**Draw:** Sylvia Reynolds **Roll Call:** Favourite wild flower

**Details of next meeting:** 9<sup>th</sup> November at 7.30pm

**November Speaker:** Mr Malcolm Busby - Ghostly Tales

**Competition** – A Halloween item

Curtis Bowl: Sara Riddle - Draw prize: Jan Sly

Refreshments – Christine Haigs and Nicola Oldfield.

Roll call – Your favourite gemstone

**AOB:** None

The meeting closed at 10.00pm. Sheila wished everyone a safe journey home.

# **Stukeley Hotel & Pub News**

New faces, new times, new custom!!!

There have been some changes at the hotel and we hope you will support us and enjoy all our plans for the short and long term.

## Dates for your diaries for November/December

From Monday 31<sup>st</sup> Oct we will have a new winter menu.

A beat the clock menu will commence on Wednesday 2<sup>nd</sup> Nov

From Friday 4<sup>th</sup> Nov Friday night will be "Happy hour night"

Saturday 12<sup>th</sup> Nov – Curry night – pre booking advised. 6pm – 9pm

Sunday 20<sup>th</sup> Nov – Pub quiz. Bring or join a team for some general knowledge fun from 6.30pm



All details for Xmas & New Year menu, opening times and entertainment will be in the next edition of the magazine however if you wish to pencil it in –

Thursday 15<sup>th</sup> Dec – Bingo & cocktail night from 7pm

Thursday 22<sup>nd</sup> Dec – Live music from "Graham Buxton"

Xmas Day – open 11.30am – 2.30pm



\*NYE\* - Karaoke & buffet



Sunday morning breakfast is available between 9.30am & 11.30am.

Come along and enjoy a cooked breakfast, tea/coffee & toast for £8.50.

We will soon be lighting the fire ☺

Details of all events will be shown on our Facebook page @StukeleyHotel, on our A-boards and you can call us on 01480 456927.

Best wishes from Kathy, Rob & Staff

email [stukeleys@outlook.com](mailto:stukeleys@outlook.com)

---

# Bookem & Riskit

60's & 70's duo

---

**Saturday • 26<sup>th</sup> November**

Great Stukeley Village Hall,

**Tickets from**

Helen Silsby      01480 459543  
Carol Buttercase    01480 458089

BYO drink      Nibbles provided

---

**Doors open**

**7.30pm**

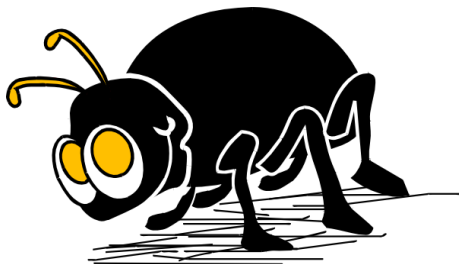
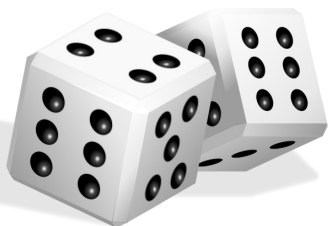
**PRICE**

**£10**



# St Bartholomew's Church

# Beetle Drive!



**Fish and Chip supper included!**

Friday 11th November at 7pm in Great Stukeley  
Village Hall

Adults: £12      Children: £9

Phone

Harry Raby 07712 108443 or

Di McGoff 07941261241 for tickets

**Please come and join us for a great evening of  
Entertainment!**

# Community Coffee

## Morning



**The next Community Coffee Morning  
will be held on Wednesday**

**26<sup>th</sup> October 2022**

**at Gt. Stukeley Village Hall**

**10.30 to 12.00**

**Please come and join us for a slice of  
homemade cake and a cup of tea or coffee**

There will also be a bring and buy stall. Any donations are most welcome. We look forward to seeing you.

For any info contact Jan, (01480 450197)

# Friends of Hinchingsbrooke Hospital Afternoon Tea

Dear All,

Many thank yous to those who attended the Friends of Hinchingsbrooke Hospital Afternoon Tea in thee Stukeleys Village Hall last month. We had a lovely time eating, drinking and chatting to all our friends. The time went quickly.

Those who attended were very generous, buying raffle tickets and Friends of Hinchingsbrooke Hospital Christmas Cards. You will all be delighted to know that £822 was raised on the day.

The money raised is used to buy wheelchairs and anything necessary for the comfort of Patients and Staff.

A children's wheelchair was donated recently. It is rainbow coloured and loved by all the children.

The Committee are very grateful to you all. Thank you again.

**Sheila Stephenson**

---

## **KARATE SHOTOKAN**



**EVERY MONDAY 5.30PM – 6.30PM**

**GREAT STUKELEY VILLAGE HALL**

**CHILDREN OVER 6 YEARS OLD AND ADULTS WELCOME  
IF YOU ARE INTERESTED IN TAKING PART PLEASE EMAIL**

**[cambridgekarate@gmail.com](mailto:cambridgekarate@gmail.com)**

**SENSEI LUCIAN LUCAS SBIRCEA**

**3<sup>RD</sup> DAN**





## Yoga in Alconbury weald

Yoga for health, harmony and peace

If you want to improve your flexibility, strength, concentration, heart health, quality of life & sleep and reduce your stress level, weight, aging and anxiety.

Come and join our Yoga sessions at **Pavilion, Alconbury weald**, Huntingdon.

**Contact: Anushree (7440326521)**

Saturday morning@ 8-9

Tuesday evening@6:30-7:30

If you are pregnant and looking for ways to relax and stay fit, so come and join our **Prenatal yoga classes**.

Thursday afternoon@12:30

Booking required



**SECURE HOME**  
ELECTRICS LTD

## Local Company Providing Expert Advice & Service

Intruder Alarm Installation  
Bespoke & Innovative  
Security Solutions  
Domestic Electrical  
Installation

CCTV Installation  
Maintenance on existing  
alarm systems  
Home Security



Dock Green Cottage, 15 Swynford  
Road, Alconbury Weald,

Phone 01480 891182  
Mobile 07970 824371

Enqs@secure-home-electrics.co.uk  
www.secure-home-electrics.co.uk



**KTS hypnotherapy**  
become the new you

*What's next on your horizon?*



Quit  
Smoking



Control  
Anxiety



Lose  
Weight

*get more out of life!  
get in touch today...*

07740 016 625  
ktshypnotherapy.co.uk



# GARDENADE

FOR ALL YOUR  
GARDENING NEEDS

## NO JOB TOO SMALL

ALL ASPECTS OF GARDEN MAINTENANCE  
COVERED  
FREE QUOTES  
COMPETATIVE PRICES

CALL TODAY

07402 811594 - ADE  
ADE101@LIVE.CO.UK



Contact details for a free no  
obligation quote.

Tel: 07958 066746

[stevenpowercarpentry@gmail.com](mailto:stevenpowercarpentry@gmail.com)

**All aspects of carpentry and construction undertaken  
No job is too big or small.**

Services include:

- Kitchen installations
- Conversions
- Wooden flooring
- Bespoke furniture
- Decking
- Doors
- Windows
- Roofing
- General building
- Stairs

Over 13 years' experience in the Construction  
Industry as a qualified Carpenter & Joiner.

# AGC SERVICES



Provides:

**Boiler Servicing & Installation**

**Help if you have Central Heating Problems**

**Electrical Installation & Fault Finding**

**Fully Gas Safe Registered & Corgi Electrical Registered  
Domestic and Commercial**



**For Friendly Advice on Heating, Gas and Electrical Problems**

**Call Nino on:**

**01480 412483 or 07786 437126**

**Or Email [augustingaetano@gmail.com](mailto:augustingaetano@gmail.com)**



If you've been thinking about enjoying a great lawn this year – green, lush and weed-free, why not contact us today and let us bring your lawn to life.

We provide four seasonal treatments, as well as beneficial treatments to keep your lawn in tip-top condition - prices start from just £5\* per month.



Ask us about our annual plans, which allows you to both spread the cost and save up to 25%.

**GreenThumb**  
LAWN TREATMENT SERVICE

Simply call: 01234 709345 or visit: [greenthumb.co.uk](http://greenthumb.co.uk)   

\*Based on a lawn size of 40m<sup>2</sup>



## Quality Bespoke Secure Storage

### Space for all your storage needs...

Easy to open & fast to access. High security with PIN codes, megapixel CCTV cameras & individual room alarms. Choose as little or as much space as you really need. Clean, dry, ventilated & condensation free Store just about anything for any length of stay, with no long term commitment. Friendly & helpful service with packaging available. Open to customers everyday 7am-9pm. Viewings arranged by appointment.

## MoreSpace

Located at Manor Farm, Graveley,  
PE19 6PH. Mention SVN22 to receive £5  
discount on your first months rental.

• Home • Document • Commercial



[www.morespacestorage.co.uk](http://www.morespacestorage.co.uk)

Call 01480 830130 to reserve yours today

# TAI CHI

For Health and Energy

FREE FIRST SESSION  
ALL WELCOME

SATURDAYS 12:30 PM - 1:30 PM  
IN THE PAVILION, ALCONBURY,  
HUNTINGDON PE28 4LT

OTHER CLASSES  
IN CAMBOURNE, HUNTINGDON,  
ST NEOTS AND ONLINE

[WWW.CAMBS-TAICHI.CO.UK](http://WWW.CAMBS-TAICHI.CO.UK)  
07415267908

# Tae Kwon-Do

## Suitable for Men, Women & Children

Schools Also In:  
Peterborough, Ely,  
St Neots, March,  
Wisbech  
and 10 other venues  
across East Anglia.

Come down and try the  
most popular Martial Art in  
the World.....

**FIRST SESSION FREE**



**Tel: 07771644460**

**www.mftkd.co.uk**

**Starting Soon**

**Please Contact us for Details**

**Huntingdon**

Great Stukeley Village Hall, PE28 4AQ

Thursdays

6.00 to 7.00pm - Children Beginners  
(5 to 10 Years)

7.00 to 8.00pm - All 11 years old +  
Including Adults

## Paying too much for your glasses?

### Save Money - Buy Direct!

Visit our factory shop to see our fabulous  
range of Discount Prescription Eyewear

- Hundreds of frames to choose from, including designer frames from Ray-Ban, Polo Ralph Lauren, Oakley, PRADA, Ted Baker and Versace
- Specialists in high and complex prescriptions
- Same-day or next-day service available\*
- Save up to 75%
- Huge range of designer sunglasses
- Full range of sports eyewear

Official stockists

\*subject to prescription and availability



**POLO**  
RALPH LAUREN



**PRADA**  
EYEWEAR

**TED BAKER**  
LONDON

**VERSACE**

We are open 9am to 5pm Monday to Friday, and 9am to 1pm Saturday



**ALL EYES**  
SPECTACLE MAKERS  
SINCE 1987

Call us

**01954 231545**

Visit our website

**www.all-**

20 Norman Way Industrial Park, Over, Cambridge CB24



THE CHURCH OF  
**JESUS CHRIST**  
OF LATTER-DAY SAINTS

ERMINE STREET, GREAT STUKELEY  
NEXT TO THE VILLAGE HALL

**Bishop:** Richard Malachowski  
*Sunday Service Schedule*

9.30am to 10.30am:      Sacrament Meeting

10.30am to 11.30am:    Children ages 3-11classes; Youth ages 12-18, Young  
Single Adult and Adult Sunday School  
*Alternating Sundays:*  
Children ages 3-11 classes; Young Women and Young  
Men ages 12-18 lessons; Priesthood (males 18+) and  
Relief Society (Sisters, age 18+) lessons.

Schedule repeats, starting at 12.30pm with **Bishop** Michael Waters

All are welcome to come and worship with us!

***Weekday meetings:***

*Tuesday Nights: Youth meetings (ages 12 – 18), starting at 7.00pm*

*First Thursday, Sisters monthly meeting and activity, at 7.00pm*

*Sunday Evenings, every other Sunday – Young Single Adult meeting and activity*

***Come and see what we believe*** – try [www.comeuntochrist.org](http://www.comeuntochrist.org)

***Believe:*** Learn about the Savior, Jesus Christ, and how basic beliefs of His Restored Gospel can enrich lives

***Belong:*** Jesus can make you a better person. You can make us a better community. Come worship with us!

***Become:*** We are all trying to be better human beings. Explore ways to aid your personal and spiritual growth.



# Alconbury Independent Baptist Church

A warm welcome awaits you for Our, .  
**SPECIAL HARVEST SERVICE**



*Sunday Evening Service - 6pm*

## **Other Weeknight Meetings**

*Wednesday Prayer Meeting 6:30pm (ZOOM & building)*

*Fridays- Teens meeting – 7pm (11-16 years)*

*2<sup>nd</sup> & 4<sup>th</sup> Friday each month (term time)*



Subscribe



*Live broadcast on Sunday morning on Facebook & YouTube*

*Copies of John's Gospel and Bibles free on request*

*Please contact Pastor Marley 01480-455300.*

**www.alconburybaptist.org**



**ST BARTHOLOMEW'S  
GREAT STUKELEY**



**ST MARTIN'S  
LITTLE STUKELEY**

November, with its short days and long nights, is traditionally a time for remembering. It starts with All Saints and All Souls Days, when people used to visit their relatives buried in churchyards and cemeteries. In the middle of the month is Remembrance Day and Remembrance Sunday (this year on November 13<sup>th</sup>) when we remember those offered themselves for the freedom of others and in service to their country. But there is something about those long, dark, cold evenings which get us thinking a bit about our own end. Too much daytime television quickly reminds us of our mortality, with all the adverts for 'direct cremation' and 'life insurance'. There's nothing like being prepared. I was recently involved in a friend's funeral. She learned very suddenly that she only had days to live – so set about, with her husband, planning her funeral. Most of us watched the Queen's funeral, and understood that she'd planned every minute of that occasion, talking it over and regularly updating the plans. There is no 'right way' to handle either our final journey through life, or for the plans for what happens at the end of life. But perhaps the one thing I would say is 'let other people in.' It's important for us to allow others to accompany us as far as possible into the 'valley of the shadow of death'. And if you're 'invited in' – tread gently and respectfully. It's not our task to tell someone what they should be doing, or not doing. Our role is to be there with that person who loves us enough to say 'be with me', and maybe to stand in awe as we encounter the Shepherd who is also holding their hand.

But it's also important to involve those closest to us in the plans for our 'send-off' – to help us pick and chose those memories that they too will need to hold close in their time of grief. It might be worth writing those ideas down (my dad had told me what hymns he wanted at his funeral, which I'd absolutely remembered. However, he'd also told my mum – and they were 3 entirely different hymns. We sung them all.)

**Church services for November 2022**

- November 6<sup>th</sup>** 9.30 am Holy Communion, Great Stukeley
- November 11<sup>th</sup>** 7.00 pm Beetle Drive in Great Stukeley Village Hall
- November 13<sup>th</sup>  
Remembrance Sunday** 9.30 am Service of Remembrance, Gt Stukeley; followed by Act of Remembrance at Gt Stukeley War Memorial and an Act of Remembrance at Lt Stukeley War Memorial
- November 20<sup>th</sup>** 9.30 am Morning Service, Gt Stukeley
- November 27<sup>th</sup>  
Advent Sunday** 9.30 am Holy Communion for Advent, Lt Stukeley  
11.00 am Holy Communion for Advent, Gt Stukeley

**Everyone is welcome. Please come and join us.**

St Bartholomew's Church is open for individual prayer by arrangement  
St Martin's Church is open for individual prayer by arrangement  
Rev Fiona Brampton is available for prayer or a chat – by phone or in person.

Rev Canon Fiona Brampton  
Associate Priest, North Leightonstone Benefice  
29 Church Road Great Stukeley  
01480 538726 [revfiona@norleigh.org.uk](mailto:revfiona@norleigh.org.uk)

**Churchwardens**

- Great Stukeley Harry Raby 01480 453269  
Diane McGoff 01480 456238
- Little Stukeley Camilla Payne [camilla@uk.com](mailto:camilla@uk.com)  
Sally Smith [sallysmith101@aol.com](mailto:sallysmith101@aol.com)

[www.norleigh.org.uk](http://www.norleigh.org.uk) (for information about the churches, and for livestreamed services).



## Hatha Yoga Classes 2018

Brampton and Little Stukeley  
Tuesday and Thursday evenings

Strength, Flexibility, Relaxation,  
Breathing and Fun

Mixed ability class for beginners  
to advanced students - everyone  
welcome

**Become mindful in your life.**

Booking required

Contact Jane

[yogawithjane@tutanota.com](mailto:yogawithjane@tutanota.com)

07958 757076

# Super Fast Print

@

**easiprint**  
Limited

***For all your  
printing needs***

**[www.easiprint.ltd](http://www.easiprint.ltd)**

**01733 602 302**



- Slate & Tile Pitched Roofing works Replacement & New Builds
- UPVC fascias, soffits and guttering, Replacement & New Builds
- Flat-roofing, Replacement & New Builds
- Free estimates

Tel. 01354 629575 Mob.07921 622 287

Website. [www.cando-roofing.co.uk](http://www.cando-roofing.co.uk)

Email. [enquiries@cando-roofing.co.uk](mailto:enquiries@cando-roofing.co.uk)





# CENTRE FOR COMPLEMENTARY HEALTH



Osteopathy | Physiotherapy | Acupuncture | Chiropody | Alexander Technique | Clinical Psychology

With over 20 years experience working with local GP's, we're able to offer a range of the most relevant natural health and complementary therapies

**This includes treatment for:**

**back & neck pain • headaches • sports injuries  
foot problems • other musculoskeletal problems**

**T:** 01480 455221 **E:** info@CentreForCompHealth.com **W:** CentreForCompHealth.com  
6 Cambridge Road, Godmanchester PE29 2BW

Follow us on Google+  Follow us on Twitter  Like us on Facebook 

## CREASEFREE IRONING SERVICE

**Need Help With Your Ironing?**

I offer a professional, local ironing service. Friendly and reliable. Collection and Delivery to suit your needs. Next day delivery available. Hangers and plastic covers provided if requested. I also offer a wash, dry and fold service if required.

- Weekly
- Monthly
- Pre-holiday
- Post-holiday
- One off
- Illness
- Convalescence



**Call Tricia**

**07731 049 206**

**To discuss your  
requirements  
and prices**