



Including **Alconbury Weald**

NOVEMBER 2021



ROYAL BRITISH LEGION

100 Years of Remembrance

See Page 5




Henry Oldfield
See page 16



Michael Reynolds
see page 17

Let us transform the quality of your lawn!



Aeration
Scarification
Overseeding
& More



- ✓ Greens up and thickens the lawn
- ✓ Removes weeds and minimises moss
- ✓ Completely safe for children and pets
- ✓ Locally owned and operated business
- ✓ Regular personalised treatments
- ✓ No contract - Direct Debit available



 **Greenleeves**
Lawn Treatment Experts

FREE Lawn Analysis: 01767 651 639

www.greenleeves-uk.com • Email: hunts@greenleeves-uk.com

December 2021 Magazine Cut-off Date

Cut-off date for the December 2021 Stukeleys Parish Magazine is

9am Monday 15th November 2021

****** Please do not be late ******

FUTURE EVENTS

Mon 1 st Nov	Parish Council Meeting	7.15pm	GSVH
Wed 10 th Nov	WI Meeting	7.15pm	GSVH
Fri 19 th Nov	Beetle Drive	7.00pm	GSVH
Wed 24 th Nov	Community Coffee Morning	10.30am to 12.00pm	GSVH

Take a look at the Magazine website at www.stukeleymag.co.uk

Email to: Martyn at martyn@stukeleymag.co.uk

Post/drop in to: 7 Hill Close, Great Stukeley PE28 4AZ

Tel: 01480 432633 Mob: 07710 171924

Please include your phone number in case of queries.

Space in the magazine is limited, so articles should be about 300 words. This is to allow as many people as possible the opportunity to contribute to the magazine. It would be helpful if you could submit articles sized to an A5 page in Word or PDF.

We reserve the right to refuse an article, cut its length or hold it over to a later issue without notice.

Please Note: This magazine is published by Martyn Fox with administrative and financial support from The Stukeleys' Parish Council. The opinions expressed are not necessarily those of the Editor or of the Parish Council

A charge is made to advertise in this magazine. All enquiries should be directed to Martyn Fox (Tel: 01480 432633) or Ramune Mimiene, (Parish Clerk) Email: clerk@thestukeleys-pc.gov.uk

This Month

Page 4:	Parish Council Report
Page 5	100 Years of Remembrance
Page 6:	Emails to the Editor
Page 6	Where are the Stukeley Sign?
Page 6:	Poppy Sales
Page 7:	WI Report
Page 8:	Update from Alconbury Weald
Page 14:	St Bartholomew's Beetle Drive
Pages 16/17:	Henry Oldfield & Michael Reynolds

Monday 4th October 2021 at 7.15pm at Little Stukeley Village Hall:

Those present Chairman Terry Pinner and Cllrs Tim Close, Sally Smith, Glyn Evans, Paula Tuck, Ben Parkin and new member to the SPC Peter Digby. Apologies received from Shaun Burton.

Regarding the Stukeleys Pocket Park Project the planning adviser to the SPC TS forwarded quotes for a topographical survey and an ecological survey. It was proposed by Cllr TC seconded by Cllr SS that we proceed with immediate effect.

A request was received regarding possible improvements to the disability access to St Bartholomew's Church Yard, it was agreed in principle that St Bartholomew's should be obtain quotes and present them to the SPC for consideration.

Maintenance of the ditch in Owl End cleared previously was discussed and it was suggested that the SPC should inspect and maintain where necessary.

The condition of the seat and brickwork surrounding the Millennial Oak in Gt Stukeley playing field was raised, it was noted that they were in poor condition and potentially dangerous, the Chairman agreed to fence off and secure the area until remedial action can be put in place.

Flooding on Ermine Street between Green End and Lancaster Way that was previously reported to Highways Dept was discussed. It was noted that any individual report this problem to HDC Highways Dept.

Maintenance of the Tumuli, overgrown roadside hedges and overgrown hedges surrounding the allotments was discussed and it was agreed that one of the two SPC approved contractors should be approached to deal with these matters. It was also agreed that the footpath between Beech Avenue and Ermine Street should be cut back. The condition of roadside overhanging branches that obscure road signs was raised, it was agreed that SPC would obtain quotes to have them cut back.

Cllr BP reported and updated the SPC on the Open Reach Broadband improvement scheme, this will benefit approximately 174 dwellings and is progressing well, the Council congratulated him on his pursuit of this project.

Speed limits were discussed regarding the reduction of the 50mph to 40mph on Ermine Street between the A1307 roundabout and Little Stukeley, and the 30mph limit on Swyford Rd reduced to 20mph. SPC to discuss this with HDC Cllr Steve Corney.

Date of next meeting was set for 7.15pm on Monday 1st November at Gt Stukeley Village Hall [Ermine Street Church Academy being unavailable due to Covid restrictions]

100 Years of Remembrance

The History

Remembrance is the act of honouring those who served to defend our democratic freedoms and way of life. We unite across faiths, cultures and backgrounds to remember the service and sacrifice of the Armed Forces community from Britain and the Commonwealth.

During the First World War, much of the fighting took place in Western Europe. The countryside was blasted, bombed and fought over repeatedly. Previously beautiful landscapes turned to mud; bleak and barren scenes where little or nothing could grow. There was a notable and striking exception to the bleakness - the bright red Flanders poppies. These resilient flowers flourished in the middle of so much chaos and destruction, growing in the thousands upon thousands.

Shortly after losing a friend in Ypres in 1915, a Canadian doctor, Lieutenant Colonel John McCrae was moved by the sight of these poppies and that inspiration led him to write the now famous poem 'In Flanders Fields'.



*In Flanders fields, the poppies blow
Between the crosses, row on row
That mark our place, and in the sky
The larks, still bravely singing, fly*



The Poppy

This poem then inspired an American academic named Moina Michael to adopt the poppy in memory of those who had fallen in the war. She campaigned to get it adopted as an official symbol of Remembrance across the United States and worked with others who were trying to do the same in Canada, Australia, and the UK.

Also involved with those efforts was a French woman, Anna Guérin who was in the UK in 1921 where she planned to sell the poppies in London.

There she met Earl Haig, our founder, who was persuaded to adopt the poppy as our emblem in the UK. The Royal British Legion, which had been formed in 1921, ordered nine million poppies and sold them on 11 November that year.

Now, around 40 million poppies are sold each year by Royal British Legion Volunteers with all proceeds being used to provide Armed Forces Veterans, Serving Personnel and their families with financial support, advice, employment, mobility, housing and mental health facilities.

The Act

This year, as in years gone by, on the 11th and 14th November, a two-minute silence will be held across the nation at 11.00am to honour those who have fallen. On Remembrance Sunday at war memorials across the nation and the commonwealth tributes will be paid to those who have made the ultimate sacrifice. Today we are more aware than ever that battles are fought mainly by young people, and many of those who survive bear scars for life.

The act of 'remembering' will not only look back to mark their sacrifice, but also to learn lessons for the future. Reflecting on the poem, '*In Flanders Fields*', Moina Michael, wrote:

*And now the torch and poppy red
We wear in honour of our dead.
Fear not that ye have died for naught;
We'll teach the lesson that ye wrought
In Flanders Fields.*

Please support the Poppy Appeal where you see them for sale throughout the village. Thank you.

Poppy Sales

Poppy sales will be sold in the bus stops in both Villages at various times.

Where are the Signs?

The village signs are with Mr Mould, the original maker, to be renovated.

Email to the Editor (References to October edition - two emails)

It is not my intention to perpetuate a public dialogue on the merits or otherwise of the Stukeley's road enhancements, but I feel compelled to respond to Mr Newman's comments on my many alleged personal shortcomings. However, I must confess to cynicism which has developed naturally through age and experience!

Firstly, it was not my intention to impugn the integrity of the Parish Council or anyone else, and to anyone who may have felt slighted, I apologize. I respect and appreciate what they do and I am well aware that freedom is restricted by external influence.

However, it would appear that correcting inaccuracies and commenting on local issues is no longer acceptable, especially by someone who is apparently not qualified, albeit with over 60 years driving experience and still in possession of a modicum of common sense. In defence of my historical 'rankings' (sic) (*probably means 'rantings'*), I'm surprised that Mr Newman seems to resent complaints about horse droppings and dog mess on public footpaths, despite any inconvenience that may cause to pedestrians, pushchair users and mobility vehicles. Regarding his anticipated options for future complaints, I'm pleased to report that cyclists and wandering cats are behaving themselves so no justification at the moment!

As for Mr Newman's suggestion that I should perhaps bring my 'self-proclaimed expertise' to the council, there are several reasons why I would not wish to do so, but I can assure him that 'fear of rejection' is not one of them.

Finally, I agree that if drivers obey the rules and use the road correctly it should be perfectly safe, but we all know that does not always happen. However, I suspect it is now too late to change what we have, so I'm afraid that Mrs Evans will, sadly, continue to 'feel insecure' when driving through the village and no doubt her friends and others will continue to share her anxiety. I wish them well.

Martyn Redmore

Owl End

- 1) **Welcome** Ann Monk welcomed 17 members to the meeting and Jane Williams from H&P NFWI
- 2) **Apologies** Nita Charter, Jenny Thilo, Monica Brown, Jackie Tiller, Doris Sadler, Moira Eddington and Sylvia Reynolds – whose husband died earlier this week. Ann had sent a card on behalf of the WI.
- 3) **Thanks** Curtis Bowl Christine Haigs Draw Prize Jan Sly
Refreshments Zena Betts and Jill Sapsed
- 4) **Jerusalem** Jerusalem was sung
- 5) **Minutes of last meeting** Were read
- 6) **Minutes signed** Ann signed the minutes as all ok
- 7) **Matters Arising** Ann handed Joan Gray her long service certificate
- 8) **Correspondence** All correspondence this month had been received by email & forwarded to members. There is a Murder Mystery Evening at Walden Road on 12th November. A letter written to Boris Johnson and printed in daily newspapers regarding climate change, was endorsed by the WI along with many other organisations.
- 9) **Speaker** Ann introduced our speaker who was Trevor Dyer from Godmanchester who gave us a very interesting talk and demonstration about pottery. He made several pots and made it look very easy. Christine Haigs and Jill Sapsed had a go on the potters wheel.
- 10) **Thanks** Thanks was given by Sheila Stephenson
- 11) **Refreshments** Refreshments were served by Jill Sapsed and Zena Betts
- 12) **Results** Competition – a piece of pottery – 1st – Jan Tilden; 2nd Sue Clark; 3rd Jill Sapsed
Draw was won by Carol Mailer and a pot, donated by Trevor Dyer, was won by Christine Haigs
- 13) **Roll Call** A famous name in the world of pottery
- 14) **Next Meeting** Will be Wednesday 10th November. There is no Speaker but Fish and Chips will be served and Zena will provide a Quiz. Curtis Bowl – Zena Betts; Draw Prize – Rita McKechnie; Competition – Something warm and woolen you love.
- 15) **Christmas Party** Ann and Jean have agreed to stay on to see the Christmas Party through. Food to be provided by Jan Tilden who will let us have the options at the November meeting. Monica Brown has offered to make the Christmas Cake – Jean to confirm with her. Competition – 4 sausage rolls AYOW
- 16) **AOB** Ann ‘attended’ the Federation Day Zoom Meeting held by H&P NFWI which was quite hard sitting for 2 hours in front of a screen. They have just enough officers to keep going at the moment. Some areas have lost up to 10 branches but H&P have only lost a few.

With no further business, Ann closed the meeting at 9.30 as wished everyone a safe journey home

UPDATE FROM ALCONBURY WEALD

We were so pleased to celebrate Alconbury Weald's military past at the first Heritage Open Day last month. Visitors came from far and wide to take part in the fun and interesting day which included guided tours of the Cold War Avionics Building, live music from The Umbrella Big Band and a performance from the Cambs and Beds Lindy Hop dance group, as well as a display of artifacts uncovered at RAF Alconbury by the Airfield Research Group. We also welcomed Michael Monk from Stukeleys Heritage Group and his wife Ann who read the fascinating recollections of Stukeleys residents Margaret Faulkner and John Lovell who lived close to the airfield during WWII. A huge thank you for their involvement on the day and to those who came along to the event.

The same weekend also saw the launch of Bohemia Café & Bistro in the listed Watch Office. Bohemia are open 7 days a week and offer a superb menu of coffee, breakfast and lunch on weekdays as well as tapas on Friday and Saturday evenings. We do hope you have had a chance to visit this wonderful new community asset in the historic building soon.

Alconbury Weald's community library launched earlier this month in The Club and families were invited to take part in a range of book themed activities such as baby rhyme time and an interactive storytelling experience with live animals to hold. We continue to work in partnership with Cambridgeshire Libraries and residents and local communities to evolve the offer of the community library which is open to the public Monday to Friday in office hours. Please do come along and pick out a page turner or two!

As we approach the winter months, festive plans are underway and the Huntingdon Male Voice Choir will be performing carols underneath the Christmas tree on Watch Office Green on Thursday, 9 December. We will be releasing further details soon so please keep an eye out on our website and social media.

The Club recently hosted the latest exhibition about the future Education Campus which will be coming forward as part of Key Phase 1 extension. Morgan Sindall, who are leading the delivery of the future secondary school and special school presented plans on behalf of Cambridgeshire County Council. The delivery of Key Phase 1 extension is underway and will deliver the next 1,000 homes and the education hub with a new secondary school and special school which will make up the Campus. If

you missed the exhibition, you can still view the plans online at:

<https://projects.www.morgansindallconstruction.com/AWEC>

Now that the commercial space and homes are progressing, and the Education Campus is coming forward, the Design Team are starting to look at the next phases of Alconbury Weald, including the location and role of the main central area of the development which will bring together the Heritage Area and Runway Park, with core amenities including a health centre, dentist and pharmacy, shops and cafes and additional community space. We will be bringing forward exhibitions and events later this year to ensure the new and local communities continue to shape the plans as Alconbury Weald moves forward.

As ever if you have any questions about the development or want to talk to one of the team, please do contact me on the details below.

Email: Rbritton@urbanandcivic.com

Tel: 01480 413141

For further information on any of the above please check our website www.alconbury-weald.co.uk or you can follow us on Facebook @alconburyweald, Twitter @AlconburyWHomes or Instagram alconburyweald.



TAI CHI

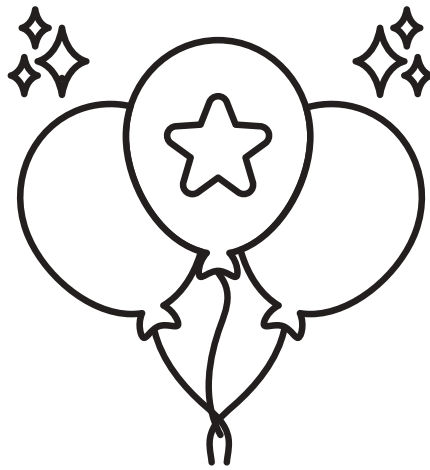
For Health and Energy

FREE FIRST SESSION
ALL WELCOME

SATURDAYS 12:30 PM - 1:30 PM
IN THE PAVILION, ALCONBURY,
HUNTINGDON PE28 4LT

OTHER CLASSES
IN CAMBOURNE, HUNTINGDON,
ST NEOTS AND ONLINE

WWW.CAMBS-TAICHI.CO.UK
07415267908



GREAT STUKELEY VILLAGE HALL

QUIZ PARTY NIGHT

SATURDAY 11 DECEMBER 2021

7:30PM - 11:30PM

Nibbles provided * BYO drinks

Tickets £7.50 per person

Contact Helen Silsby 01480 459543 or

Carol Buttercase 01480 458089



News Flash!

The Community Coffee Morning



Will be resuming

On the last Wednesday in the month,

November 24th

In Great Stukeley Village Hall

10.30am to 12.00pm

Everyone most welcome.

Please come and join us for a cuppa and a slice of homemade cake.

For any information phone Jan on

01480 450197

The Library Presents

The Library Presents is delighted to announce the Autumn Season of exciting arts events which will run from October to December 2021.

Back for its eighth season with a burst of exciting artistic events and activities, **The Library Presents** is returning to local venues in a colourful flurry of music, theatre, workshops, comedy and family friendly shows.

We also have fascinating online arts activities, one with Integrated BSL and audio description for d/Deaf and visually impaired audiences and all with automated or typed subtitles.

Venues are in Alconbury Weald, Arbury, Barnwell, Buckden, Cambourne, Clay Farm, Ely, Haddenham, Huntingdon, March, Sawston, St Ives, St Neots, Whittlesey and Wisbech.

Full details of the programme, along with booking information can be found at www.library.live/the-library-presents

If you would like to receive a hard copy of the brochure please email thelibrarypresents@cambridgeshire.gov.uk

We always welcome help in promoting the programme, please let us know if you are able to display brochures and we can send them to you.

Rupert Woods

Libraries Development Support and Partnerships Projects & Funding Officer

[Libraries - Cambridgeshire County Council](http://libraries-cambridgeshire-county-council.gov.uk)

Ely Library

6 The Cloisters

Ely

CB7 4ZH

Email: TheLibraryPresents@cambridgeshire.gov.uk

Telephone: 01223 703570

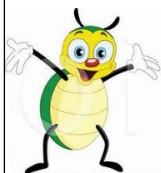
Mobile: 07425 615684

Twitter: [@cambslib](https://twitter.com/cambslib)

Facebook: [Cambridgeshire Libraries](https://www.facebook.com/CambridgeshireLibraries)



**EQUALITY & DIVERSITY
NETWORK
AMBASSADOR**



**St Bartholomew's Beetle Drive
on Friday 19th November at 7pm
in Gt Stukeley Village Hall,
with fish and chip supper.**



Tickets £12 for adults, £7 for under 16.

Tickets from Harry Raby on 01480 453269.

healthwatch Cambridgeshire

Your care home experiences wanted!

Do you, a loved one, family member or friend live in a Cambridgeshire or Peterborough care home?

Health and social care champion Healthwatch Cambridgeshire is calling out to local families to share their experiences of care homes over the last 12-18 months.

From communications and visiting restrictions to Covid testing and end of life care - they want to hear what it's been like for you.

What you tell Healthwatch will help local health and care services prepare better for the future.

If you're not online, get in touch and they can send you a paper questionnaire and a pre-paid envelope. Call 0330 355 1285.

Share your views at:

<https://www.healthwatchcambridgeshire.co.uk/care-home-survey>



Spotlight Productions are delighted to return to the stage at Hinchbrooke Performing Arts Centre on the 18th & 19th December 2021 for 2 unforgettable evenings, celebrating musicals from the West End.

Featuring songs and dance routines from 14 major musicals, once again the Spotlight cast will bring that West End experience to Huntingdon. Curtain up at 7.30pm, all tickets £10.00 available from <https://www.spotlight-theatre.co.uk/tickets/>



Remembering

Henry Oldfield

1931 - 2021

Henry was born in Alconbury in 1931, where he grew up with his twin brother, Maurice, during the 1930s and 1940s. During war time in the 1940s, the village school had to be shared between village children and evacuees, meaning half day schooling. This provided the perfect environment to obtain life skills of the day, such as becoming an accomplished horse rider and learning to swim in and ice-skate on

Alconbury Brook. In the 1947 big freeze, conditions were right for Henry to ice-skate from Alconbury to Bampton as the Brook froze solid. These informative early years in rural England provided a basis for a lifelong love of animals, surrounded by horses and dogs.

Just after the war in the late 1940s and now a young adult, Henry met a young Liverpudlian, Nancy McDonald, who was staying with her sister Rene who had been deployed under the war effort to the Huntingdonshire Land Army. As was the case back then, the youngest sibling helped her elder sister, Rene, with the new arrival of baby Michael Cooper. Village church social clubs and dances were one of the few ways to meet and socialise, pre the internet! Occasionally they would venture into Huntingdon for a dance in the town hall or to the pictures, but it was always a long cycle home. In 1950 Henry married Nancy. At the same time, Henry was obliged to join National Service for 2 long years and was stationed in Germany. Ration parcels from Nancy containing a tiny tin of coffee, writing paper, a bar of chocolate or soap could be posted for less than a shilling and were a lifeline to see him through this time.

After National Service Henry undertook an apprenticeship with Thackrays, a local builder. As the 1950s progressed, Henry and Nancy were keen to put down roots with their own home, and plans came together when they secured a piece of land in Church End from Tim Lloyd at the Three Horseshoes Farm (now the Country Hotel), enabling them to design and build their own home. This triggered the move from Alconbury to Great Stukeley. Building started in 1955 and they moved in at Easter 1957. The new bungalow was named Ringlet after a prize-winning fox hound that Henry had puppy walked in 1949. An era that predated house numbers and post codes.

Between 1959 and 1969 Henry had three sons, Paul, Peter and John. Despite three young children, Henry attended Peterborough Regional College to gain the qualifications needed to become a Member of the Chartered Institute of Builders and the Institute of Clerk of Works. He worked at RAF Wyton, Bampton and Alconbury during the 1970s, 1980s and 1990s, during the heart of the cold war. Fast jets and reconnaissance planes were a key element of the era, and Henry spent many a year as airfield Clerk of Works, quietly working in the background ensuring the military could keep tabs on the others and defend our nation.

During much of this period Henry was also a Church Warden for St Bartholomew's church and on the church PCC. This included arranging visits from the Bishop of Ely as well as many fund-raising events such as the annual petticoat lane village fete during the 1980s, a brain wave of Vicar & Mrs Newman. Many essential fund-raising events followed such as strawberry tea, music evenings, and harvest festivals and lenten lunches. Although Henry retired as church warden in 1998 as he underwent heart bypass surgery, he never lost faith and remained a bell ringer whilst he was able to attend church. He will take comfort that he is buried in his church yard.

Henry's DNA continues in his three sons, eight grandchildren and one great grandchild.

Reflections by Nancy and John



MICHAEL REYNOLDS

Michael Reynolds was known as Mick to all his friends and everyone else who had the fortune to have enjoyed his company.

Mick was an active member of the Royal British Legion, Brampton branch for whom he worked tirelessly as a subscription collector. He was heavily involved in arranging the Remembrance Day ceremonies in both villages. He will, I am sure, be greatly missed by that organisation.

Mick was also a Parish Councillor for in excess of forty years, many of those as Vice Chairman. He served on the Planning Committee, a position he took extremely seriously. He was always keen that any proposed new development was a benefit to our local communities. He also served as the Council's Highways Officer, another position he fulfilled with great commitment. Even after he 'retired' from the Council he continued to work in that position and could frequently be seen around the villages checking footpaths, lights and the village roads for potholes. I am certain the County authorities knew about him because he was adamant that the faults he reported should be attended to and if they weren't he would keep knocking on their door. He was a great champion of the Women's Institute ensuring all their gifts to the village of Great Stukeley were maintained in a satisfactory manner. He was a great supporter with Sylvia of the annual flower show always achieving a high standard of results.

Mick Reynolds was a true village man at heart, he loved his village and did all he could to ensure high standards of maintenance and appearance were maintained. He was always approachable and only too pleased to help his fellow residents.

He will be sadly missed by all who knew him.



The Stukeley Country Hotel



As we head into Autumn/Winter we would like to let you know what's going on at the hotel
We have had a few live music events recently and although they weren't attended as we hoped, they went very well.

Our next music event will be "Graham Buxton" on Friday 17th December. Graham will lead us into the following Xmas week.

Xmas menu is now available from the hotel.

We can provide a traditional Xmas meal or cater for a festive party. Call us to discuss.

We have a new menu ready to start mid- October and will be serving our

Winter warmers offer – see below

Sausage, mash, peas & onion gravy in a giant Yorkshire pudding

Liver & bacon with mash & vegetables

Home-made pie with chips or mash & garden peas

Chefs curry & rice with naan bread

£9.50

Add a medium glass of wine or pint of lager/ale

£13.50

Available Wed – Sat 12pm – 3pm & 5pm – 8pm



The Quiz will return Sunday November 28th starting at the earlier time of 6pm

It has been brought to our attention that we will be having a second pub opening soon in the village.

We wish them well with their plans but hope you will still visit us.

We are now getting back on our feet after a troublesome 18 months and need your support.

We are always looking to take on new staff so if you are interested in all aspects of pub work and would like to join our team then please contact Kathy or Claire.

Full training given if required.

phone 01480 456927, or email : stukeleys@outlook.com

BETWEEN THE LINES SHUTTERS

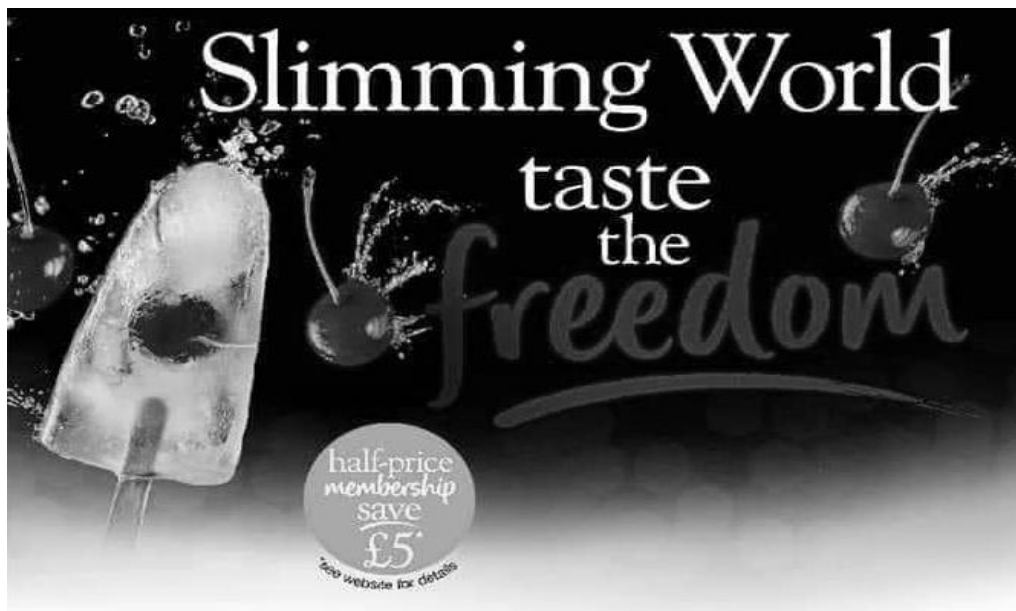
CAMBRIDGSHIRE

FRAME
YOUR
PERFECT
VIEW

AFFORDABLE CUSTOM
MADE SHUTTERS



www.betweenthelinesshutters.com
Tel: 07831731800
[Instagram.com/betweenthelinesshutters/](https://www.instagram.com/betweenthelinesshutters/)



**GET SET FOR YOUR COMEBACK
GROUP RELAUNCH WITH A NEW CONSULTANT**

**WEDNESDAY EVENINGS
STUKELEY MEADOWS PRIMARY SCHOOL
THURSDAY MORNINGS
THE CONEYGEAR CENTRE, HUNTINGDON**

'When I first walked through the doors to my Slimming World group, I won't lie, I was petrified. However, I was instantly made to feel welcome, reassured and supported, going on to lose 2 and half stones in 10 months. In losing the weight, I found a new confidence in myself, along with unlocking a whole new way of enjoying food. I've been a Consultant now for 18 months, I've loved supporting others to achieve their dream weight and I'm super excited to help people in the local area since moving here this year. A fresh start for everyone looking for support locally.' Get in contact today to find out more and get your journey off to a flying start.

**CONTACT CASSIE TO JOIN
07947 796903**

#SWtastethefreedom



slimmingworld.co.uk





KARATE SHOTOKAN

EVERY MONDAY FROM 5.30pm.

This friendly class for beginners will take place from 5.30pm – 6.25pm at Great Stukeley Village Hall, followed by an advanced session from 6.30pm.

Classes will be taught by **Sensei Lucian Lucas Sbircea, 3rd Dan** and will focus on kata (patterns of movements) and kihon (a set of movements that are connected together). Kumite (friendly sparring) will also be taught for more advanced students in the second session.

Cost: Adults = £20/month paid on first Monday of each month, Children=£10/month paid on first Monday of each month. Children must be accompanied by a parent.

If you are interested in taking part please email: lucian.sbircea@cellbond.com.





Yoga in Alconbury weald

Yoga for health, harmony and peace

If you want to improve your flexibility, strength, concentration, heart health, quality of life & sleep and reduce your stress level, weight, aging and anxiety.

Come and join our Yoga sessions at **Pavilion, Alconbury weald**, Huntingdon.

Contact: Anushree (7440326521)

Saturday morning@ 8-9

Tuesday evening@6:30-7:30

If you are pregnant and looking for ways to relax and stay fit, so come and join our **Prenatal yoga classes**.

Thursday afternoon@12:30

Booking required



SECURE HOME
ELECTRICS LTD

Local Company Providing Expert Advice & Service

Intruder Alarm Installation
Bespoke & Innovative
Security Solutions
Domestic Electrical
Installation

CCTV Installation
Maintenance on existing
alarm systems
Home Security



Dock Green Cottage, 15 Swynford
Road, Alconbury Weald,

Phone 01480 891182
Mobile 07970 824371

Enqs@secure-home-electrics.co.uk
www.secure-home-electrics.co.uk



KTS hypnotherapy
become the new you

What's next on your horizon?



Quit
Smoking



Control
Anxiety



Lose
Weight

*get more out of life!
get in touch today...*

07740 016 625
kthypnotherapy.co.uk



GARDENADE

FOR ALL YOUR
GARDENING NEEDS

NO JOB TOO SMALL

ALL ASPECTS OF GARDEN MAINTENANCE
COVERED
FREE QUOTES
COMPETATIVE PRICES

CALL TODAY

07402 811594 - ADE
ADE101@LIVE.CO.UK



Contact details for a free no
obligation quote.

Tel: 07958 066746

stevenpowercarpentry@gmail.com

**All aspects of carpentry and construction undertaken
No job is too big or small.**

Services include:

- Kitchen installations
- Conversions
- Wooden flooring
- Bespoke furniture
- Decking
- Doors
- Windows
- Roofing
- General building
- Stairs

Over 13 years' experience in the Construction
Industry as a qualified Carpenter & Joiner.

AGC SERVICES



Provides:

Boiler Servicing & Installation

Help if you have Central Heating Problems

Electrical Installation & Fault Finding

Fully Gas Safe Registered & Corgi Electrical Registered

Domestic and Commercial

For Friendly Advice on Heating, Gas and Electrical Problems

Call Nino on:

01480 412483 or 07786 437126

Or Email augustingaetano@gmail.com



If you've been thinking about enjoying a great lawn this year – green, lush and weed-free, why not contact us today and let us bring your lawn to life.

We provide four seasonal treatments, as well as beneficial treatments to keep your lawn in tip-top condition - prices start from just £5* per month.



Ask us about our annual plans, which allows you to both spread the cost and save up to 25%.

GreenThumb
LAWN TREATMENT SERVICE

Simply call: 01234 709345 or visit: greenthumb.co.uk   

*Based on a lawn size of 40m²

Paying too much for your glasses?

Save Money - Buy Direct!

Visit our factory shop to see our fabulous range of Discount Prescription Eyewear

- Hundreds of frames to choose from, including designer frames from Ray-Ban, Polo Ralph Lauren, Oakley, PRADA, Ted Baker and Versace
- Specialists in high and complex prescriptions
- Same-day or next-day service available*
- Save up to 75%
- Huge range of designer sunglasses
- Full range of sports eyewear

Official stockists

*Subject to prescription and availability



POLO
RALPH LAUREN



PRADA
EYEWEAR

TED BAKER
LONDON

VERSACE

We are open 9am to 5pm Monday to Friday, and 9am to 1pm Saturday



ALL EYES
SPECTACLE MAKERS

Call us

01954 231545

Visit our website

www.all-

20 Norman Way Industrial Park, Over, Cambridge CB24



**Hatha
Yoga
Classes
2018**

Brampton and Little Stukeley
Tuesday and Thursday evenings

Strength, Flexibility, Relaxation,
Breathing and Fun

Mixed ability class for beginners
to advanced students - everyone
welcome

Become mindful in your life.

Booking required
Contact Jane

yogawithjane@tutanota.com

07958 757076

Local Cleaning Service

**Busy or unable to clean?
Let Me do it for you**

**Over 25 years'
experience**

Ring:

**Mrs Terry Paddick
after 6 o'clock pm**

Tel: 01480 453795

Tae Kwon-Do

Suitable for Men, Women & Children

Come down and try the
most popular Martial Art in
the World.....

FIRST SESSION FREE



Tel: 07771644460

Schools Also In:
Peterborough, Ely,
St Neots, March,
Wisbech
and 10 other venues
across East Anglia.

Starting Soon

Please Contact us for Details

Huntingdon

Great Stukeley Village Hall, PE28 4AQ

Thursdays

6.00 to 7.00pm - Children Beginners
(5 to 10 Years)

7.00 to 8.00pm - All 11 years old +
Including Adults

www.mftkd.co.uk



**Greenwood
homecare**



Do you need care visits at home?

Greenwood Homecare provides
quality care in Huntingdon and
the surrounding areas



FREE ASSESSMENT



**DAY, LIVE-IN OR NIGHT
CARE AVAILABLE**

FOR MORE INFORMATION

Visit: Greenwoodhomecare.co.uk

Email: Huntingdon@greenwoodhomecare.co.uk

Call: 01480 879645

THE CHURCH OF
JESUS CHRIST
OF LATTER-DAY SAINTS

ERMINE STREET, GREAT STUKELEY
NEXT TO THE VILLAGE HALL

Bishop: Richard Malachowski
Sunday Service Schedule

9.30am to 10.30am: Sacrament Meeting

10.30am to 11.30am: Children ages 3-11 classes; Youth ages 12-18, Young
Single Adult and Adult Sunday School
Alternating Sundays:
Children ages 3-11 classes; Young Women and Young
Men ages 12-18 lessons; Priesthood (males 18+) and
Relief Society (Sisters, age 18+) lessons.

Schedule repeats, starting at 12.30pm with **Bishop** Michael Waters

All are welcome to come and worship with us!

Weekday meetings:

Tuesday Nights: Youth meetings (ages 12 – 18), starting at 7.00pm

First Thursday, Sisters monthly meeting and activity, at 7.00pm

Sunday Evenings, every other Sunday – Young Single Adult meeting and activity

Come and see what we believe – try www.comeuntochrist.org

Believe: Learn about the Savior, Jesus Christ, and how basic beliefs of His Restored Gospel can enrich lives

Belong: Jesus can make you a better person. You can make us a better community. Come worship with us!

Become: We are all trying to be better human beings. Explore ways to aid your personal and spiritual growth.



Alconbury Independent Baptist Church

SPECIAL HARVEST SERVICE

Psalms 126v6- "He that goeth forth ...bringing his sheaves with him"

Sunday 3rd October 10:45am

Guest Preacher: Mr. Luke Northern (Baldock, Herts)

(Luke is a farmer- will be preaching the gospel using his experience)

Regular Services

Sunday Morning Worship 10:45am

(Children's Church for 5-11years)

Sunday Evening Service 6pm

Wednesday Prayer Meeting 6.30pm

Friday 2nd & 4th Explorers (11-16 years) 7.00pm

Live broadcast on Sunday morning on facebook & youtube

www.alconburybaptist.org -



**ST BARTHOLOMEW'S
GREAT STUKELEY**



**ST MARTIN'S
LITTLE STUKELEY**

ST BARTHOLOMEW'S GREAT STUKELEY ST MARTIN'S LITTLE STUKELEY

Church services for November 2021

November 7th	9.30 am Holy Communion, Great Stukeley
November 14th	9.30 am Service for Remembrance Sunday with Act of Remembrance at the War Memorial, Great Stukeley followed by Act of Remembrance at the War Memorial, Little Stukeley
November 21st	9.30 am Morning Service, Great Stukeley
November 28th	9.30 am Morning Service, Great Stukeley 9.30 am Holy Communion, Little Stukeley

Everyone is welcome. Please come and join us.

Many in our churches are vulnerable or caring for someone who is vulnerable. We want all people to feel able to come to church. For this reason, we are being cautious as COVID restrictions are lifted.

We would like to encourage all people to wear a face covering during worship and certainly when singing; to register on the Track and Trace system; to sanitize on entering the church and to continue the practice of social distancing whilst in the building.

Every Sunday morning –9.30 am a 'live' service which will also be recorded. You can join this service by Zoom, or find it on the website (www.norleigh.org.uk) or North Leightonstone Benefice Facebook Group

St Bartholomew's Church is open for individual prayer by arrangement

St Martin's Church is open for individual prayer by arrangement

Rev Fiona Brampton (01480 538726 revfiona@norleigh.org.uk) and Rev Mandy Flaherty (01480 896541 rector@norleigh.org.uk) are available for prayer or a chat (by phone under the current regulations).

Rev Fiona Brampton

Associate Priest, North Leightonstone Benefice

29 Church Road

Great Stukeley

01480 538726 revfiona@norleigh.org.uk

Churchwardens

Great Stukeley Harry Raby

Diane McGoff

01480 453269

01480 456238

Little Stukeley

Camilla Payne

Sally Smith

camilla@uk.com

sallysmith101@aol.com

www.norleigh.org.uk (for information about the churches, and for livestreamed and recorded services).

GARDENADE.

FOR ALL YOUR
GARDENING NEEDS

NO JOB TOO SMALL

ALL ASPECTS OF GARDEN MAINTENANCE
COVERED
FREE QUOTES
COMPETATIVE PRICES

CALL TODAY

07402 811394 - ADE
ADE101@LIV3.CO.UK

Super Fast Print

@
easiprint
Limited

***For all your
printing needs***

www.easiprint.ltd

01733 602 302



- Slate & Tile Pitched Roofing works Replacement & New Builds
- UPVC fascias, soffits and guttering, Replacement & New Builds
- Flat-roofing, Replacement & New Builds
- Free estimates

Tel. 01354 629575 Mob. 07921 622 287

Website. www.cando-roofing.co.uk

Email. enquiries@cando-roofing.co.uk





CENTRE FOR COMPLEMENTARY HEALTH



Osteopathy | Physiotherapy | Acupuncture | Chiropody | Alexander Technique | Clinical Psychology

With over 20 years experience working with local GP's, we're able to offer a range of the most relevant natural health and complementary therapies

This includes treatment for:

**back & neck pain • headaches • sports injuries
foot problems • other musculoskeletal problems**

T: 01480 455221 **E:** info@CentreForCompHealth.com **W:** CentreForCompHealth.com
6 Cambridge Road, Godmanchester PE29 2BW

Follow us on Google+  Follow us on Twitter  Like us on Facebook 

CREASEFREE IRONING SERVICE

Need Help With Your Ironing?

I offer a professional, local ironing service. Friendly and reliable. Collection and Delivery to suit your needs. Next day delivery available. Hangers and plastic covers provided if requested. I also offer a wash, dry and fold service if required.

- Weekly
- Monthly
- Pre-holiday
- Post-holiday
- One off
- Illness
- Convalescence



**Call Tricia
07731 049 206**

**To discuss your
requirements
and prices**