




Including **Alconbury Weald**

MAY 2021



Parish Council Chairman, Terry Pinner
And Volunteers, Peter Haynes, Andrew Buddle and Jamie Young
Planting Snowdrops & Bluebells on the Tumuli

Let us transform the quality of your lawn!



Aeration
Scarification
Overseeding
& More



- ✓ Greens up and thickens the lawn
- ✓ Removes weeds and minimises moss
- ✓ Completely safe for children and pets
- ✓ Locally owned and operated business
- ✓ Regular personalised treatments
- ✓ No contract - Direct Debit available



FREE Lawn Analysis: 01767 651 639

www.greensleeves-uk.com • Email: hunts@greensleeves-uk.com

June 2021 Magazine Cut-off Date

Cut-off date for the June 2021 Stukeleys Parish Magazine is

9am Monday 17th May 2021

****** Please do not be late ******

FUTURE EVENTS

May 2nd	9.30 am Holy Communion, Great Stukeley
May 9th	9.30 am Morning Service, Great Stukeley
May 16th	11.30 am Family Communion, Great Stukeley
May 23rd	9.30 am Holy Communion, Little Stukeley
	9.30 am Morning Service, Great Stukeley

Every Friday lunchtime 12.00 noon a recorded 'midday' service, which can be found on the website or the North Leightonstone Benefice Facebook Group.

Take a look at the Magazine website at www.stukeleymag.co.uk

Email to: Martyn at martyn@stukeleymag.co.uk

Post/drop in to: 7 Hill Close, Great Stukeley PE28 4AZ

Tel: 01480 432633 Mob: 07710 171924

Please include your phone number in case of queries.

Space in the magazine is limited, so articles should be about 300 words. This is to allow as many people as possible the opportunity to contribute to the magazine. It would be helpful if you could submit articles sized to an A5 page in Word or PDF.

We reserve the right to refuse an article, cut its length or hold it over to a later issue without notice.

Please Note: This magazine is published by Martyn Fox with administrative and financial support from The Stukeleys' Parish Council. The opinions expressed are not necessarily those of the Editor or of the Parish Council

A charge is made to advertise in this magazine. All enquiries should be directed to Martyn Fox (Tel: 01480 432633) or Ramune Mimiene, (Parish Clerk) Email: clerk@thestukeleys-pc.gov.uk

This Month

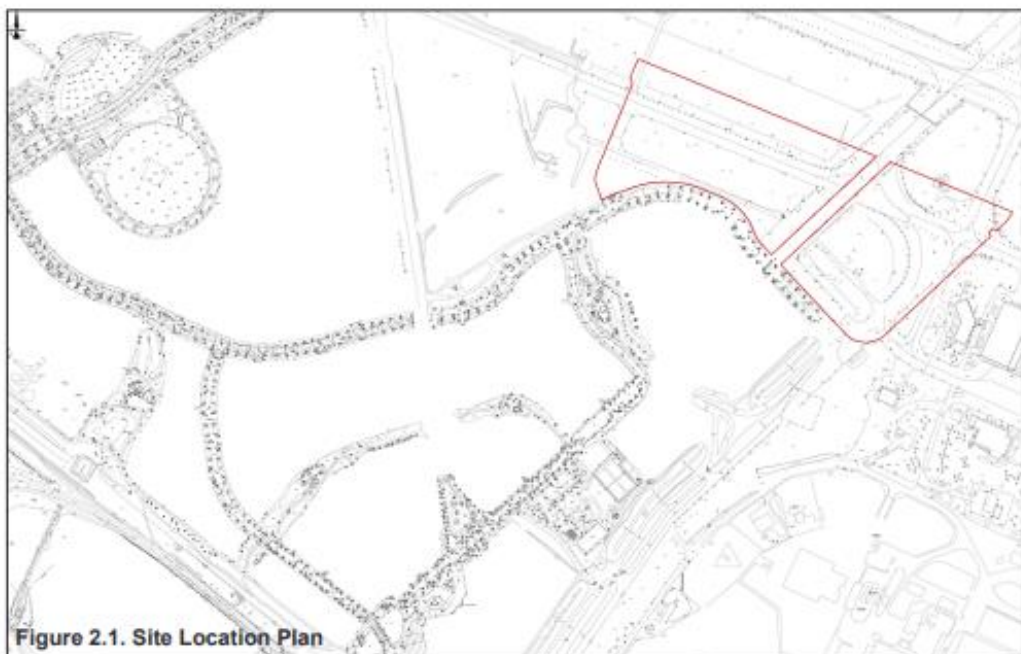
Pages 4-5:	Stukeleys Parish Council Report
Page 5:	Thank you for Ditch Clearing
Page 6:	Neighbourhood Watch News
Page 7:	Great Stukeley Flower, Garden & Craft Show
Page 8:	Alconbury Community Preschool
Page 9:	Gt Stukeley Village Hall Committee Vacancies
Pages 14-15:	Uban&Civic Alconbury Weald Update

WANTED

Items for the Magazine. All things considered.

The government is not currently planning to extend the remote meeting regulations beyond 7 May 2021. Along with other local government bodies, the National Association of Local councils [NALC] is continues to press for an extension. They are also preparing guidance for local councils on preparing for and managing the return to physical meetings in May and beyond if required.

The planning adviser to SPC updated the Council on an application for reserved matters on the northern part of Alconbury Weald key phase 1 (parcel 8- see red edge plan below) and the site abuts the southern flank of the runway and is bounded by residential development in KP1 to the east south and west. The northern boundary is in KP2 which has yet to be designed in detail, but it is likely that there will be a central park along the line of the main runway which will for a formal green edge.



215 market homes	mix of 2-3-4 and 5 bed
15 affordable rent	1-2 3 and 4 bed affordable rent
16 shared	2 and 3 bed

15 affordable rented and 16 shared ownership- gives 12 % affordable on this phase which is consistent with the approved delivery on KP1.

He also updated SPC on The Stukeleys Pocket Park Project the redeveloping of Great Stukeley Playing Field into Recreation / Pocket park – and reported that the application remains at the pre app phase with Huntingdon District Council.

Council Chairman T Pinner reported that the 2000 snowdrops and 2000 bluebells have been planted and the work in clearing ditches and culverts in Owl End are completed. The Council thanked the Chairman for the hard work he personally put into these projects.

The DEVELOPMENT AGREEMENT between THE STUKELEYS PARISH COUNCIL AND URBAN&CIVIC ALCONBURY LIMITED for the infrastructure works to be carried to install road humps on Ermine Street at has been signed, work to commence on signage/speed limits in May, works involving road closures in mid-June.

Issues to be raised to be added to the May agenda include the purchase and installation of electronic speed signs in Ermine St and the height of the curbing at the pedestrian entrance to RAF Alconbury and related disability access issues.

1st TUESDAY 4 MAY 2021 due to Spring Bank Holiday on the 3rd and due to current government guidelines, that remote meetings may not be held beyond 6 May 2021.

Ditch Clearing

May I take this opportunity to thank the Parish Council for all their help in attending to the ditch clearing in Owl End which was the main contributor to the flooding to our house on 23rd December. Having tried to deal with the Environment Agency, Cambridgeshire Highways, Drainage Board and other bodies who were all quick to avoid responsibility or actually carry out emergency repairs to resolve the issue. It is refreshing to know the Parish Council can act swiftly and help to resolve the issue. Too many times people are quick to criticise, and I wanted to just say thank you to Terry Pinner for all the help in organising the relevant works.

Kind regards,

Simon Murkett

Great Stukeley Flower, Garden & Craft Show 2021

It is with regret that we announce that the Great Stukeley Flower Show in August will not be held this year. Although many of you will have had your second vaccines by then, it still seems doubtful that the numbers involved will be allowed to meet up inside the Village Hall. Or certain restrictions may still be in place. It is such a shame we have to do this, but if things do ease or restrictions change, we may decide to do something different.

Gardening has been a great source of enjoyment to many of us during this pandemic. It's been a joy to see so many gardens looking good and to chat with the gardeners as we pass by on our daily walks. Who knows perhaps when we will be able to hold the next Show, we might see some new faces who've discovered gardening during the lock downs.

The Flower Show Committee



Do you need care visits at home?

Greenwood Homecare provides
quality care in Huntingdon and
the surrounding areas



FREE ASSESSMENT



**DAY, LIVE-IN OR NIGHT
CARE AVAILABLE**

FOR MORE INFORMATION

Visit: [Greenwoodhomecare.co.uk](https://www.greenwoodhomecare.co.uk)

Email: Huntingdon@greenwoodhomecare.co.uk

Call: **01480 879645**



APRIL 2021 'OUR NEWS' NEWSLETTER

We are pleased to share our [April 'OUR NEWS' newsletter](#), created by Neighbourhood Watch Network (the umbrella organisation for Neighbourhood Watches across England and Wales) for all Neighbourhood Watch supporters - from households to volunteers and partners.

The newsletter can be viewed by clicking on www.neighbourhoodalert.co.uk/images/site_images/74096_Apr_2021_OUR_NEWS.pdf

This month we launch our PROTECT YOUR CAR campaign. We also look at fleece ware scams, predatory marriage and much more. Next year, in 2022, we will be celebrating Neighbourhood Watch's **40th Anniversary** and we want to hear from you how YOU would like to see this celebrated nationally. Please take a minute to give us your views at

www.neighbourhoodalert.co.uk/images/site_images/74096_Apr_2021_OUR_NEWS.pdf

We hope you enjoy reading our newsletter and would love to hear from you on what you would like to read more of. Please send your suggestions to deborah.waller@ourwatch.org.uk.

Kind regards

NEIGHBOURHOOD WATCH NETWORK, Central Support Team

Follow us. ourwatch.org.uk / [Facebook](#) / [Twitter](#) / [Instagram](#) / [LinkedIn](#)

Neighbourhood Watch Network is a charity registered in England & Wales, CIO no: 1173349

Message Sent By

Deborah Waller (NWN, Senior Digital and Communications Manager, England and Wales)

Alconbury Community Preschool

We had another historic term in Preschool! We were delighted to welcome more children back to the setting when the schools opened in March 2021. It is notable, that during lockdown #3, Early Years settings remained opened and provided an ongoing service throughout the pandemic. We send out huge thanks to our parents/carers for working with us during this time and adhering to all the ongoing restrictions in place. It has been a Preschool family effort to keep us safe. Despite these trying times, we enjoyed wonderful learning adventures - creating a fun safari experience (despite shut zoos!), learning about circle crafts (using halves), impressive junk modelling, and Easter crafts to name a few. Preschool Book Week was a big hit, focused on Julia Donaldson's writings, we recreated the Gruffalo's deep dark wood! To celebrate we made Gruffalo crumble, flying Zogs and Stickmen. The weather warmed and we planted seeds and learnt about plant growth. We were delighted to set up a new Preschool weather station complete with a barometer, thermometer, rain gauges, a sun dial and rainbow windsock - funded by a grant from the Wooley Wind Farm. It is a wonderful addition to our outdoor area, where we learn about weather, develop language skills, and observe the environment. We have a busy summer term ahead and look forward to helping each child on their personal learning journey.

As a Registered charity (293071), like many others, our fundraising activity has been greatly reduced during the pandemic. We are grateful for small initiatives by our parents, including creating Preschool facemasks for sale. In the summer term, the children are invited to take part in a sponsored bounce to raise funds for Preschool.

Please contact us to book your child's place for academic year 2021-2022 and avoid disappointment.

For more information about Preschool please follow us on Facebook or email: acpschool@live.co.uk.

Louise B, Kelly, Marie, Claire & Donna

GREAT STUKELEY VILLAGE HALL MANAGEMENT COMMITTEE VACANCIES

As we prepare to reopen our village hall, we are looking for people to join our team. As an employee or volunteer you will help to run the village hall for the benefit of the village, local groups and other users.

We are a registered charity and you can find out more on the Charity Commission page at www.gov.uk **Great Stukeley Village Hall Charity number: 803359**

Caretaker

We are looking for a reliable, flexible, local person to clean and maintain the village hall and grounds.

This is a paid position for approximately 6 hours per week.

If you are interested, please call Helen or Nicola for more information.

Booking Clerk

We are looking for someone with computer skills to manage our online booking system, and to assist with advertising and promoting the village hall as a venue.

This is a paid position for approximately 4 - 6 hours per week.

If you are interested, please call Helen or Nicola for more information.

Webmaster

We are looking for someone with web design skills to update our website.

For more information, please contact Nicola.

Management Committee Members/Trustees

We need new members to help manage the village hall and bring new ideas to the table.

In addition to ordinary members, we also have a Chairperson, Vice-chair, Treasurer and Secretary.

These are voluntary positions and you would be expected to serve for a minimum of 1 year.

Please contact Helen or Nicola if you are interested in joining us.

Nicola Oldfield, Secretary
Tel: 01480 437115
Email: gsvhall@aol.com

Helen Silsby, Treasurer
Tel: 07934 853646
Email: treasurer@gsvh.org.uk



BRow4

Bike Run or Walk 4



Saturday 19th June 2021

Nene Park Trust - Ferry Meadows, Peterborough, PE2 5UU

YOUR LOCAL AIR AMBULANCE

www.brow4.com

anna@brow4.com

07828 471738

BRow4 CIC would like to invite you, to help raise more money and awareness for your chosen Air Ambulance by doing a sponsored **Bike Run or Walk** with or without your **4**-legged friend, around a marshalled choice of three track sizes, 5km, 8km, 12km. You can choose how near or far you and your team want to go. This is not a race, the only person you will be racing against will be Yourself. We are also asking the Air Ambulances to come along to this event with their gazebos and stands, with their merchandise to sell and to show the public the difference that they all have from one and another.

If you would like to take part has the option to register via the Flyer, directly through the **BRow4 CIC** website on the News to Eventbrite. I have attached the copy of the flyers that we will be using. On receipt of the registration everyone will receive an acceptance email or letter, a map Nene Park Trust Ferry Meadows in Peterborough, a Map of the route that will be available for them to do the event of their choice. They will also be notified of the amusements that will be attending the event. They will also be advised on how to get a sponsorship form and a t-shirt from their local Air Ambulance. On the reverse side of the flyer is an area where people can write which Air Ambulance they are supporting, when we have that information, we will notify the Air Ambulance immediately of who has registered.

All registration money goes towards the running costs of the event we are organising. Any that has been donated to **BRow4 CIC** on the day, will be divided equally to All Air Ambulances that we are supporting.

Your personal information will only be disclosed (with your permission) to the Air Ambulance of your choice and no other. **BRow4 CIC** would like to keep the information so that we can keep you informed of any event and supply you with a newsletter. We will remove you from our emailing site when requested by you. Once the event has taken place, we will send you a letter or email, thanking you for taking part in this year's event and look forward to next year's event. This will also be an occasion when you can ask to be removed from our mailing list.

2019 saw over 1000 people attend this event raising money for all 10 air ambulances that have flown over this area. We had stalls, catering, children's entertainment, and live bands for all the families to enjoy. So please bring chairs and a blanket, buy a burger a beer and an ice cream and enjoy the entertainment that we have got for you.

All Air Ambulances have one goal, to provide a lifesaving rapid response pre-hospital emergency service. Not many people know that due to the different terrain in different parts of the United Kingdom, the pilots and crew must learn different techniques to be able to help those that need medical help within their area.

If there is anything further you require, please do not hesitate to contact me.



Anna Dutton

Founder /Director of BRoW4 CIC 13173629



BRoW4

Bike Run or Walk 4



Saturday 19th June 2021

Nene Park Trust - Ferry Meadows, Peterborough, PE2 5UU

YOUR LOCAL AIR AMBULANCE

www.brow4.com

anna@brow4.com

07828 471738

BRoW4 postal address: 113 Thongsley, Huntingdon, Cambridgeshire.
PE29 1NT.





CONTESTANT APPLICATION FORM
BY REGISTERING I AGREE TO A MINIMUM SPONSORSHIP OF £50.00

TITLE _____ NAME _____ SURNAME _____

ADDRESS _____

POST CODE _____ EMAIL _____

BIKE _____ RUN _____ WALK _____

CHOSEN AIR AMBULANCE _____

UNDER 13s TAKING PART MUST BE ACCOMPAINED BY A FEE-PAYING ADULT

FIRST NAME _____ SURNAME _____ AGE _____

FIRST NAME _____ SURNAME _____ AGE _____

FIRST NAME _____ SURNAME _____ AGE _____

EMERGENCY CONTACT

NAME _____ TEL: _____

Payment may be made by **BACS**, using your **name** as a reference.
Santander, sort code **09-01-28**, account number **87292359**

Please make **cheques** payable to **BRow4**

All correspondence to

BRow4, 113 Thongsley, Huntingdon, Cambridgeshire, PE29 1NT

FAMILY FUNFEST FOR THE AIR AMBULANCES



**SATURDAY 19TH JUNE 2021
STARTS AT 11AM**

**FERRY MEADOWS,
NENE PARK, PETERBOROUGH, PE2 5UU**



BRoW4
Bring Your Own Walk 4
Saturday 19th June 2021
Nene Park Trust - Ferry Meadows, Peterborough, PE2 5UU
www.brow4.com www.brow4.com
0203 701 471730

YOUR LOCAL AIR AMBULANCE



STUKELEYS PARISH MAGAZINE | UPDATE FROM ALCONBURY WEALD

As the roadmap of lockdown begins to ease us back to a feeling of normality, we are delighted to update you on a number of community amenities coming forward at Alconbury Weald which we hope will be enjoyed by many.

We celebrated the opening of the Pavilion community centre this month which marks the first space dedicated solely to the community, at the heart of the first phase of Alconbury Weald. It joins up the cluster of community amenities already on the development, close by to the Watch Office and the Club. Whilst the official launch event is postponed until the summer due to current social distancing measures, the Pavilion opened its doors on Monday 12th April, in line with government's roadmap out of lockdown which allowed community centres to open. The building is already in high demand with the local community helping to shape the programme of events and activities coming forward. Regular community groups beginning next month include Alconbury Scouts, Amazing Kids which offers sports skills activities from early years to Key Stage 2, mother and baby wellness group Happy Muma Hub, and Yoga by Anushree.

Plans are afoot to convert the refurbished Watch Office at Alconbury Weald into a new bistro and bar – operated by local business Bohemia, who run a popular eatery in St Neots. The new community destination will also benefit from an outside barbeque and seating area overlooking cricket green, close to the Pavilion. The new café & bistro is due to open at the Watch Office in late summer and has been designed sympathetically to respect and celebrate the history of the building. The change of use to the bistro/bar will see the Library move into the Club, which has better access and space for the general public. In the meantime, Bohemia will be visiting Alconbury Weald with its pop-up coffee bar so residents and the local business community can sample some of the menu that will be available.

As set out in the recent newsletter, we have also updated the plans previously submitted to bring forward homes as part of Phase 2 for Alconbury Weald, on the Grange Farm area of the development. This will phase the delivery of the homes with 750 homes and a primary school in first instance in the northern section, which will also enable early delivery of the first part of the Country Park and the refurbishment of Prestley Wood. The application follows the green light for the Southern Gateway which will connect Alconbury Weald directly to the A141. Work on this connection will start later this year.

Ermine Street works

Earlier this year we updated you on the work the Parish Council Working Group, the County Council Highways Safety team and Urban&Civic have been doing to agree the improved signage.

and carry out further traffic calming measures through the Stukeleys. The works have suffered some delays in getting going, due to technical issues, but are now due to begin in June and complete in August, subject to final agreement of dates with the County Council Highways Team. In the meantime, we have been working on suitable traffic management plans to minimise disruption for residents and are working with the Parish Council to provide a detailed door drop in advance of works to set out the detailed times, locations and works to be carried out. The plans were shown in our latest newsletter and a more technical set of detailed drawings for this work are available here: <https://www.alconbury-weald.co.uk/news/ermine-street-additional-traffic-calming-works/>

Further details on the next stages of the development are set out in our latest newsletter and also available on our website at <https://www.alconbury-weald.co.uk/news/latest-edition-of-alconbury-weald-newsletter-hits-doorsteps/> . For further information on any of the above please check our website www.alconbury-weald.co.uk or you can follow us on Facebook @alconburyweald, Twitter @AlconburyWHomes or Instagram alconburyweald.

As ever if you have any questions about the development or want to talk to one of the team, please do contact me on the details below.

Email: Rbritton@urbanandcivic.com

Tel: 01480 413141





APRIL 2021 'OUR NEWS' NEWSLETTER

We are pleased to share our [April 'OUR NEWS' newsletter](#), created by Neighbourhood Watch Network (the umbrella organisation for Neighbourhood Watches across England and Wales) for all Neighbourhood Watch supporters - from households to volunteers and partners.

The newsletter can be viewed by clicking on www.neighbourhoodalert.co.uk/images/site_images/74096_Apr_2021_OUR_NEWS.pdf

This month we launch our PROTECT YOUR CAR campaign. We also look at fleece ware scams, predatory marriage and much more. Next year, in 2022, we will be celebrating Neighbourhood Watch's **40th Anniversary** and we want to hear from you how YOU would like to see this celebrated nationally. Please take a minute to give us your views at

www.neighbourhoodalert.co.uk/images/site_images/74096_Apr_2021_OUR_NEWS.pdf

We hope you enjoy reading our newsletter and would love to hear from you on what you would like to read more of. Please send your suggestions to deborah.waller@ourwatch.org.uk.

Kind regards

NEIGHBOURHOOD WATCH NETWORK, Central Support Team

Follow us. ourwatch.org.uk / [Facebook](#) / [Twitter](#) / [Instagram](#) / [LinkedIn](#)
Neighbourhood Watch Network is a charity registered in England & Wales, CIO no: 1173349

Message Sent By

Deborah Waller (NWN, Senior Digital and Communications Manager, England and Wales)

PROTECT YOUR CAR campaign

Car crime is a real problem in the UK. Alarming, **one car is stolen every ten minutes**.⁽¹⁾ With Covid-19 and the recent lockdowns, many people aren't driving or checking on their cars as much as they used to. At Neighbourhood Watch, we need your help to remind car owners to remain vigilant about where and how they park their cars, in order to keep them safe.

John Hayward-Cripps, CEO of Neighbourhood Watch Network, says

"Most car crimes happen because cars are left unlocked. There is a misconception that some cars are auto-locking and lock themselves if left unattended after a period of time. This isn't always correct. Another misconception is that your car is too old and no one will bother stealing it. This is also incorrect – both new and old cars are at risk. Having a car stolen or broken into is more than simply a hassle, it can impact on people's livelihoods. The good news is that there are simple steps everyone can take to help reduce the risk to their car. With only a 46% recovery rate³ we're reminding everyone to leave your car **locked, lit and empty**."

Remember - Leave your car:

1. **Locked (2)** A simple mistake that can prove calamitous: **44%** of cars are broken into via an unlocked door.
2. **Lit (2)** **80%** of car crime occurs during the evening or at night. Parking near streetlamps or in a busy area can deter thieves.
3. **Empty (or with no items on show)** **Owners** often forget that personal belongings within the car are at as much risk of being stolen as the car itself. https://www.ourwatch.org.uk/sites/default/files/2021-03/5746_NHW_Hide_your_stuff_1x1_v2_0.mp4

John Hayward-Cripps continues

"Car thieves are opportunists. Leaving items on a car seat or forgetting to lock your car can act as an invitation for crime. We want to instil the habit of double-checking where and how you've parked with our three simple steps: **leave it locked, lit and empty**. As a local charity with a trusted voice in the community, we're asking everyone to proactively support their neighbours and friends by sharing our three steps with three others. By spreading the word, we're confident we can crack down on car crime which can be deeply distressing and debilitating for its victims."

How to support our campaign:

LEARN: Visit www.ourwatch.org.uk/protectyourcar for top tips and advice on keeping your vehicle safe.

FOLLOW: Follow us on our social channels ([Facebook](#) / [Twitter](#) / [Instagram](#) / [LinkedIn](#)) to share our messages within your communities. Tag #ProtectYourCar

SHARE: Forward this email to your friends and family, or [download this image](#) and share it on WhatsApp with the following message 'Car crime remains a pressing problem in the UK – alarmingly, one car is stolen every ten minutes. The vast majority of car crimes happen through unlocked cars, parked in badly lit areas and where there are visible items to steal. Remember these simple steps to keep your car safe... **leave it locked, lit and empty**. For more top tips visit www.ourwatch.org.uk/protectyourcar

For more information, including requests for a press release or campaign pack, please contact our Senior Communications and Digital Manager Deborah Waller on Deborah.waller@ourwatch.org.uk

Best Regards

Neighbourhood Watch Network (the national umbrella charity for Neighbourhood Watches across England and Wales)

Message Sent By

Central Support Team (NWN, Neighbourhood Watch Network, England and Wales)

Kathy & Rob welcome you to The Stukeley's Country Hotel



TAKE AWAY MENU

Friday's - Fish 'n' Chips

Sunday's - Roast dinners

Beef and one other meat, vegetables, roast potatoes, mash,
Yorkshire pudding and gravy

Contact Claire 07446114963 or 01480 456927

**We are now serving food & drink
from 12.00pm**

EVENTS COMING UP

Monday 3rd May

**Music with : Graham Buxton & BBQ 3.00pm
onwards, please book in advance**

Sunday 27th June

**Music with: Ska Dust 3.00pm
Village Party: Saturday 17th July**



SECURE HOME
ELECTRICS LTD

Local Company Providing Expert Advice & Service

Intruder Alarm Installation
Bespoke & Innovative
Security Solutions
Domestic Electrical
Installation

CCTV Installation
Maintenance on existing
alarm systems
Home Security



Dock Green Cottage, 15 Swynford
Road, Alconbury Weald,

Phone 01480 891182
Mobile 07970 824371

Enqs@secure-home-electrics.co.uk
www.secure-home-electrics.co.uk



KTS hypnotherapy
become the new you

What's next on your horizon?



Quit
Smoking



Control
Anxiety



Lose
Weight

*get more out of life!
get in touch today...*

07740 016 625
kthypnotherapy.co.uk



GARDENADE

FOR ALL YOUR
GARDENING NEEDS

NO JOB TOO SMALL

ALL ASPECTS OF GARDEN MAINTENANCE
COVERED
FREE QUOTES
COMPETATIVE PRICES

CALL TODAY

07402 811594 - ADE
ADE101@LIVE.CO.UK



Contact details for a free no
obligation quote.

Tel: 07958 066746

stevenpowercarpentry@gmail.com

**All aspects of carpentry and construction undertaken
No job is too big or small.**

Services include:

- Kitchen installations
- Conversions
- Wooden flooring
- Bespoke furniture
- Decking
- Doors
- Windows
- Roofing
- General building
- Stairs

Over 13 years' experience in the Construction
Industry as a qualified Carpenter & Joiner.

AGC SERVICES



Provides:

Boiler Servicing & Installation

Help if you have Central Heating Problems

Electrical Installation & Fault Finding

Fully Gas Safe Registered & Corgi Electrical Registered

Domestic and Commercial

For Friendly Advice on Heating, Gas and Electrical Problems

Call Nino on:

01480 412483 or 07786 437126

Or Email augustingaetano@talktalk.net



If you've been thinking about enjoying a great lawn this year – green, lush and weed-free, why not contact us today and let us bring your lawn to life.

We provide four seasonal treatments, as well as beneficial treatments to keep your lawn in tip-top condition - prices start from just £5* per month.



Ask us about our annual plans, which allows you to both spread the cost and save up to 25%.

GreenThumb
LAWN TREATMENT SERVICE

Simply call: 01234 709345 or visit: greenthumb.co.uk   

*Based on a lawn size of 40m²

Paying too much for your glasses?

Save Money - Buy Direct!

Visit our factory shop to see our fabulous range of Discount Prescription Eyewear

- Hundreds of frames to choose from, including designer frames from Ray-Ban, Polo Ralph Lauren, Oakley, PRADA, Ted Baker and Versace
- Specialists in high and complex prescriptions
- Same-day or next-day service available*
- Save up to 75%
- Huge range of designer sunglasses
- Full range of sports eyewear

Official stockists

*Subject to prescription and availability



POLO
RALPH LAUREN



PRADA
EYEWEAR

TED BAKER
LONDON

VERSACE

We are open 9am to 5pm Monday to Friday, and 9am to 1pm Saturday



ALL EYES
SPECTACLE MAKERS

Call us

01954 231545

Visit our website

www.all-

20 Norman Way Industrial Park, Over, Cambridge CB24



**Hatha
Yoga
Classes
2018**

Brampton and Little Stukeley
Tuesday and Thursday evenings

Strength, Flexibility, Relaxation,
Breathing and Fun

Mixed ability class for beginners
to advanced students - everyone
welcome

Become mindful in your life.

Booking required
Contact Jane

yogawithjane@tutanota.com

07958 757076

Local Cleaning Service

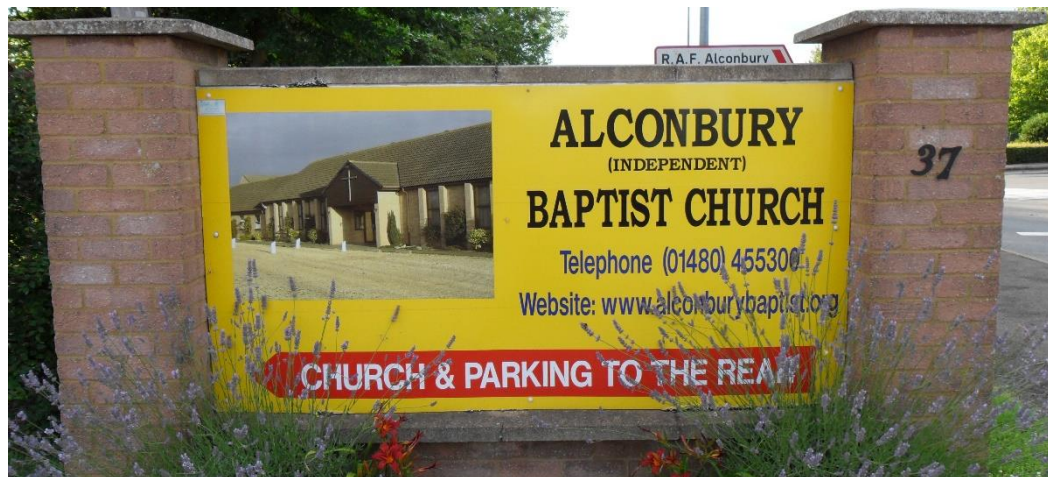
**Busy or unable to clean?
Let Me do it for you**

**Over 25 years'
experience**

Ring:

**Mrs Terry Paddick
after 6 o'clock pm**

Tel: 01480 453795



Alconbury Independent Baptist Church

Special Easter Services

Good Friday

Why did Jesus die?

7pm

Easter Sunday

Why is the Resurrection Important? 10:45am

Usual Services

Sunday	Morning Worship	10:45am
<i>(Children's Church for 5-11years)</i>		

Sunday	Evening Service (monthly)	6pm
--------	---------------------------	-----

Wednesday	Prayer Meeting	6.30pm
-----------	----------------	--------

All are Welcome to any of these services! Live broadcast on Sunday morning on YouTube or facebook

If you have any questions or require a bible to find out more about the Christian Faith. Please contact Pastor G Marley.
Tel: 01480- 455300 email: pastor@alconburybaptist.org

THE CHURCH OF
JESUS CHRIST
OF LATTER-DAY SAINTS

ERMINE STREET, GREAT STUKELEY
NEXT TO THE VILLAGE HALL

Bishop: Richard Malachowski
Sunday Service Schedule

9.30am to 10.30am: Sacrament Meeting

10.30am to 11.30am: Children ages 3-11 classes; Youth ages 12-18, Young
Single Adult and Adult Sunday School
Alternating Sundays:
Children ages 3-11 classes; Young Women and Young
Men ages 12-18 lessons; Priesthood (males 18+) and
Relief Society (Sisters, age 18+) lessons.

Schedule repeats, starting at 12.30pm with **Bishop** Michael Waters

All are welcome to come and worship with us!

Weekday meetings:

Tuesday Nights: Youth meetings (ages 12 – 18), starting at 7.00pm

First Thursday, Sisters monthly meeting and activity, at 7.00pm

Sunday Evenings, every other Sunday – Young Single Adult meeting and activity

Come and see what we believe – try www.comeuntochrist.org

Believe: Learn about the Savior, Jesus Christ, and how basic beliefs of His Restored Gospel can enrich lives

Belong: Jesus can make you a better person. You can make us a better community. Come worship with us!

Become: We are all trying to be better human beings. Explore ways to aid your personal and spiritual growth.



GRACE FELLOWSHIP BAPTIST CHURCH

GOD LOVES YOU AND SO DO WE

SUNDAY WORSHIP @ 11 AM

We are an international group of believers worshipping Jesus together. We might be small, but we have big hearts for Jesus. Our mission is to Glorify God, Transform our Community, and Reach the World with the Gospel of Jesus Christ. We believe that God has called us to love Him and to love one another. If you are looking for a church home, or just somewhere to worship on Sunday, we hope to see you. If you need more information, please check out our website @ gfgg-baptist.org.

The second Saturday of each month we host a men's fellowship breakfast. Please join us for a meal, discussion, and time of fellowship.

If there is any way we can help of if you need to speak to someone please call Pastor Eric Gren at 01832 293143 or email at egren921@gmail.com.



ST BARTHOLOMEW'S
GREAT STUKELEY



ST MARTIN'S
LITTLE STUKELEY

ST BARTHOLOMEW'S GREAT STUKELEY ST MARTIN'S LITTLE STUKELEY

Church services for May 21

We are delighted that in person services are able to resume once more.

May 2nd	9.30 am Holy Communion, Great Stukeley
May 9th	9.30 am Morning Service, Great Stukeley
May 16th	11.30 am Family Communion, Great Stukeley
May 23rd	9.30 am Holy Communion, Little Stukeley
	9.30 am Morning Service, Great Stukeley

As we still have to follow social distancing, please can you let Dianne McGoff (Great Stukeley) or Camilla Payne (Little Stukeley) know if you're planning to attend worship.

Face coverings must be worn in church at all times; there are arrangements for track and trace information to be gathered. We are still not permitted to sing, or to have conversations within the church building.

Every Sunday morning –9.30 am a 'live' service which will also be recorded. You can join this service by Zoom, or find it on the website (www.norleigh.org.uk) or North Leightonstone Benefice Facebook Group

Every Friday lunchtime 12.00 noon a recorded 'midday' service, which can be found on the website or the North Leightonstone Benefice Facebook Group.

St Bartholomew's Church is open for individual prayer by arrangement
St Martin's Church is open for individual prayer by arrangement

Rev Fiona Brampton (01480 538726 revfiona@norleigh.org.uk) and Rev Mandy Flaherty (01480 896541 rector@norleigh.org.uk) are available for prayer or a chat (by phone under the current regulations).

Rev Fiona Brampton
Associate Priest, North Leightonstone Benefice
29 Church Road
Great Stukeley
01480 538726 revfiona@norleigh.org.uk

Churchwardens

Great Stukeley	Harry Raby	01480 453269
	Diane McGoff	01480 456238

Little Stukeley	Camilla Payne	camilla@uk.com
	Sally Smith	sallysmith101@aol.com

www.norleigh.org.uk (for information about the churches, and for livestreamed and recorded services).

GARDENADE.

FOR ALL YOUR
GARDENING NEEDS

NO JOB TOO SMALL

ALL ASPECTS OF GARDEN MAINTENANCE
COVERED
FREE QUOTES
COMPETITIVE PRICES

CALL TODAY

07402 811394 - ADE
ADE101@LIV3.CO.UK

Super Fast Print

@
easiprint
Limited

***For all your
printing needs***

www.easiprint.ltd

01733 602 302



**PRICE
MATCH
PROMISE**

SEEN A BETTER PRICE?
SEE IF WE CAN BEAT IT!



 **CanDo**
ROOFING

- Slate & Tile Pitched Roofing works Replacement & New Builds
- UPVC fascias, soffits and guttering, Replacement & New Builds
- Flat-roofing, Replacement & New Builds
- Free estimates

Tel. 01354 629575 Mob. 07921 622 287

Website. www.cando-roofing.co.uk

Email. enquiries@cando-roofing.co.uk





CENTRE FOR COMPLEMENTARY HEALTH



Osteopathy | Physiotherapy | Acupuncture | Chiropody | Alexander Technique | Clinical Psychology

With over 20 years experience working with local GP's, we're able to offer a range of the most relevant natural health and complementary therapies

This includes treatment for:

**back & neck pain • headaches • sports injuries
foot problems • other musculoskeletal problems**

T: 01480 455221 **E:** info@CentreForCompHealth.com **W:** CentreForCompHealth.com
6 Cambridge Road, Godmanchester PE29 2BW

Follow us on Google+  Follow us on Twitter  Like us on Facebook 

CREASEFREE IRONING SERVICE

Need Help With Your Ironing?

I offer a professional, local ironing service. Friendly and reliable. Collection and Delivery to suit your needs. Next day delivery available. Hangers and plastic covers provided if requested. I also offer a wash, dry and fold service if required.

- Weekly
- Monthly
- Pre-holiday
- Post-holiday
- One off
- Illness
- Convalescence



Call Tricia
07731 049 206
**To discuss your
requirements
and prices**