



March 2016



Left: 007 Casino Night
Great Stukeley Village Hall

Right: Alconbury Weald
See pages 16 & 17



Left: Addressing the Haggis
Burns Night Little Stukeley Village Hall
See page 11

**Please note: The cut-off date for the April Magazine is
9am Friday 11th March 2016
Please see page 3**

£5 for 2 classes with this ad.
New customers only.



#THE NEW JAZZERCISE®

Incinerate up to 800 calories in an hour. Calories don't stand a chance this year!

Classes in St. Ives, Huntingdon, Great Stukeley and other areas.

Huntingdon Classes: Mon/Thurs 7 PM Dance Mixx - Hartford Junior School
Saturday - Great Stukeley Village Hall 9 AM Dance Mixx 10:15 AM Strength45

St. Ives: Mon 7PM Weds 7:30PM Dance Mixx - Westfield Junior School



fb.me/JazzerciseCambs



@jazzercisecambs



(Tina) 01487 841811

Osteopathy | Physiotherapy | Acupuncture | Chiropody | Pilates | Alexander Technique



CENTRE FOR COMPLEMENTARY HEALTH

Enhance Your Well Being With Our Natural Health Treatments

With over 20 years' experience working with local GP's, we're able to offer a range of the most relevant natural health and complementary therapies

This includes treatment for:

- ↕ back & neck pain
- ↕ headaches
- ↕ sport injuries
- ↕ foot problems
- ↕ other musculoskeletal problems

Contact us for advice and information on our wide range of treatments

call: **01480 455221**

mail: info@CentreForCompHealth.com

visit: CentreForCompHealth.com

6 Cambridge Road, Godmanchester PE29 2BW



BUPA and PPP Registered Providers

April 2016 Magazine Cut-off Date

Cut-off date for the April 2016 Stukeleys Parish Magazine is
9am Friday 11th March 2016

PLEASE NOTE: I am going on holiday on 19th March so any article received after 11th March may not be included in the magazine as I am aiming to send the magazine to the printer on Sunday evening 13th March.



FUTURE EVENTS

Mon 7 th Mar	Parish Council Meeting	7.30 pm	LSVH
Fri 4 th Mar	Royal British Legion Coffee Morning	10.30 pm	GSVH
Sat 12 th Mar	Mens Breakfast	9.00 am	Grace Fellowship
Sun 20 th Mar	Lenten Lunch	12 /12.30 pm	St Bartholomews
Sun 27 th Mar	Extra Holy Communion for Easter	9.00 am	St Bartholomews
Wed 30 th Mar	Community Coffee Morning	10.30-12.00	GSVH

Take a look at the Magazine website at www.stukeleymag.co.uk

Email to: Martyn at martyn@stukeleymag.co.uk

Post/drop in to: 7 Hill Close, Great Stukeley PE28 4AZ

Tel: 01480 432633 Mob: 07710 171924

Please include your phone number in case of queries.

Space in the magazine is limited, so articles should be about 300 words. This is to allow as many people as possible the opportunity to contribute to the magazine. It would be helpful if you could submit articles sized to an A5 page in Word or PDF.

We reserve the right to refuse an article, cut its length or hold it over to a later issue without notice.

Please Note: This magazine is published by Martyn Fox with administrative and financial support from The Stukeleys Parish Council. The opinions expressed are not necessarily those of the Editor or of the Parish Council

A charge is made to advertise in this magazine. All enquiries should be directed to Martyn Fox (Tel: 01480 432633) or Carole Pollock, the Clerk of the Parish Council (Tel: 01480 464817).

This Month

Pages 5-9:	Stukeleys Parish Council News
Pages 10/11:	St Martin's Church & Little Stukeley Village Hall
Page 12:	Great Stukeley Flower, Garden and Craft Show 2016
Page 13:	Great Stukeley Fashion Show II
Pages 16/17:	Update from Alconbury Weald
Pages 18/19:	Bumbling Bob
Pages 20-22:	Road signs in the Stukeleys
Page 23:	Stukeleys Poppy Appeal Coffee Morning
Page 26:	WI Report



80th Birthday



Margaret Brown together with Stukeleys Residents and all her neighbours in Montague Road wish Wendy Richmond a very Happy 80th Birthday on 1st March



Tree Working Party



Help is needed to replace damaged Oak trees in the line of trees adjacent to the main road through the Stukeleys, a volunteer working party is required to replace approx. 36 trees on a Saturday or Sunday Morning in March. If you are available and community minded, please contact me by phone, e-mail or at 43 Park View.

Sue Parkin

Parish Tree Warden

43, Park View Gt. Stukeley PE28 4AJ - Tel 01480 454085

e-mail ken.parkin@btinternet.com



Parish Magazine



Volunteers wanted to help deliver the Parish Magazine in Great Stukeley on a monthly basis.

Please contact:

Sue Parkin

43, Park View Gt. Stukeley PE28 4AJ - Tel 01480 454085

e-mail ken.parkin@btinternet.com

The Stukeleys Parish Council News

The **Parish Council Meeting** was held on the 1st February at Great Stukeley Village Hall.

Cambridgeshire County Council (CCC) and Huntingdonshire District Council (HDC) news – the mobile library service will be kept for 2016 but Shopmobility will lose funding.

CCC Highways have agreed that the work carried out in Low Road was not to specification and will be redone. The Parish Council continues to press CCC Highways to complete other highway faults and repairs in the village.

A revised Ermine Street Enhancement Scheme should be available for public consultation in late February/early March, with one day manned exhibitions in both village halls from 3 - 8 pm. This should enable the scheme to progress through all stages for a construction start in summer 2016 with completion by summer 2017, in line with the S106 Agreement that it should be in place by the time of the occupation of the 250th dwelling. A bus shelter is to be provided on the northbound side in Little Stukeley. This would not form part of the works, and therefore doesn't appear on the proposals. However, a contractor has offered to install a shelter (to be provided by the Parish Council) free of charge if they undertake the traffic calming works.

A proposal to consider the removal of existing and reduce the number of proposed new road signs in the Stukeleys was discussed. It was agreed that the Parish Council should:

- consider every road sign proposed in the enhancement works for Ermine Street and make certain that the identifiable benefits to be achieved from each proposed road sign outweigh the visual amenity that will be sacrificed by its installation.

- work with the highways authority to actively review the purpose and benefit of each road sign in our villages, identify signs for which the sacrifice outweighs the benefit and where signs are found to have insufficient benefit, request their removal.

The Central Storage Unit on the Stukeleys Allotments has been erected and painted with a coat of protection paint. Many thanks to all the volunteers who helped paint the unit. An opening ceremony will be arranged.

The Parish Council will be replacing all Parish Council owned street lights with 18 watt LED lamps.

The Council considered adoption and funding of repairs/maintenance of the church column lamp at St Bartholomew's Church. As many members of the community use the area during the year and therefore the street light would benefit the community as a whole by lighting a wider area of the road and entrance of the church yard. It was agreed to provide funds up to £1,800 for the installation and the supply of electric to the unit (UK Networks) on the condition the St Bartholomew's PCC provided a column and lamp to the Parish Council's specification (as advised by an expert from HDC). The street light would become part of the Parish Council street lighting stock.

The Parish Council considered a voluntary and community sector grant application received from St Martins Church PCC. It was felt that the replacement of the window over the font would benefit the entire community but not the enhancement of the windows with stained glass. It was therefore agreed to award a grant of £3,000 for the refurbishment of the window, any extra costs for enhancement to be met by the St Martins PCC. The work must be commenced with 24 months from the date of this meeting.

The following planning applications were considered by the Parish Council:

- i Alconbury Weald, Ermine Street, Little Stukeley – 15/02331/REM** – Submission of reserved matters (appearance, layout, landscaping, scale and mass) in respect of the construction of a Mid-Tech Building comprising B1(a), B1(c) and ancillary B8 uses, highway works, with car parking, landscaping, lights, minor ground remodelling and associated works.
After discussion it was agreed to recommend approval although expressing disappointment that more distance and landscaping had not been given for the setting of the Watchtower Listed Building.
- ii Alconbury Weald, Ermine Street, Little Stukeley – 15/02380/REM** – Application for approval of appearance, layout, landscaping, access and scale in respect of the construction of new highways including associated highways landscaping and ancillary works.
After discussion it was agreed to make no observations for or against.
- iii Alconbury Weald, Ermine Street, Little Stukeley – 15/02254/REM** – Application for approval of appearance, layout, landscaping, access and scale in respect of the construction of SUDS Drainage, infrastructure (including drainage ponds and ditches) and all associated engineering and earth works, including ground remodelling, formal landscaping, foul water pumping stations and ancillary works.
The Ermine Street frontage landscaping was very attractive and would provide a an appropriate edge to the development and interface with Ermine St in the form of a linear park incorporating the previous tree planting. It was agreed to recommend approval and to express support for the quality of the design.
- iv Alconbury Weald, Ermine Street, Little Stukeley – 15/02288/NMA** – Minor adjustments to location of highway junctions off Parachute Way and the adjustment of the location of SUDS ponds.
After discussion it was agreed that the Parish Council noted this application and would make no representation.
- v Alconbury Weald, Ermine Street, Little Stukeley – 15/02289/NMA** – Minor modifications to both the Western Estate Road and Boulevard Spur.
After discussion it was agreed that the Parish Council noted this application and would make no representation.
- vi Alconbury Weald, Ermine Street, Little Stukeley – 15/02290/NMA** – Minor adjustments to the location of highway junctions off Parachute Way and the adjustment of the location of SUDS ponds.
After discussion it was agreed that the Parish Council noted this application and would make no representation.
- vii 3 Chestnut Grove, Great Stukeley – 16/00060/TREE** – T1 and T2 Hornbeam: fell. The trees are part of a group of four, these two trees have been previously reduced due to their lean angles and decay in stems. Removal of these two trees will enhance the appearance of the remaining trees. It was felt that the trees in the back garden were very crowded, it was agreed to recommend approval.
- viii 20 Pringle Way, Little Stukeley – 16/00132/TRCA** – Holm Oak – To rear of property, approximately 12ft from property, to sectionally dismantle the tree to ground level and grind stump to allow renovation of the property. 2 x Ash – along right hand boundary when looking at the property. To sectionally dismantle to ground level. Trees are in poor health and are within close proximity of road and phone line.
It was a small site and the trees were very close to the property, it was agreed to recommend approval.
- ix Agricultural Buildings, 33 Low Road, Little Stukeley – 16/00087/S73** – Removal of personal planning conditions from planning permissions 0300646FUL and 0501624FUL
After discussion it was agreed to object because this was the only break to restrict traffic. The current situation limited damage that could be caused through access by heavy commercial vehicles along Low Road and Mill Road and could lead to further loss of residential amenities.

Thank you

Many thanks to all the volunteers who helped paint the Allotment Central Storage Unit.

Many thanks to Cllr Paul Vincent, who is leaving the Parish Council, for all his hard work in the service of our community including obtaining grants, his perseverance and work in connection with the construction of the central storage unit.

Buster Evans, who has been counting out Parish Magazines and delivering them to distributors to deliver to residents for a number of years, is standing down from this role – many thanks for all your years of service to villages.

Next Scheduled Meetings:

Monday 7th March 2016 at 7:30pm at Little Stukeley Village Hall

Monday 4th April 2016 at 7:30pm at Little Stukeley Village Hall

Please check the website and notice board for notification of any Extra-ordinary Parish Council Meetings to be held.

A full set of Minutes and other Parish Council information are available at www.thestukeleys-pc.gov.uk/

Carole Pollock, Parish Clerk/RFO to The Stukeleys Parish Council, 5 Gore Tree Road, Hemingford Grey, Cambs PE28 9BP.

Tel: 01480 464817 email: clerk@thestukeleys-pc.gov.uk

Parish Councillors Contact Details

Stuart Bell	533142
Karl Gasson	413925
Philip Hobson	455629
Barrie James	434611
Michael Monk	456634
Sue Parkin (Chairman)	454085
Sally Smith	450356
Paul Vincent	411871
Stef van den Haak	07714 660865
Carole Pollock (Parish Clerk)	464817

Email: clerk@thestukeleys-pc.gov.uk

County Councillors:

Sir Peter Brown	453062/411245
Peter Ashcroft	436669

District Councillor:

Keith Baker	890782
-------------	--------

Useful Websites and Telephone Numbers

Abandoned cars 01480 388297

Fly tipping 01480 388640

Pot holes in roads/other highways faults 0845 0455212

www.cambridgeshire.gov.uk/highwayfaults

Illegal signs/graffiti 0800 7832220

Refuse and Recycling Helpline 0800 3896613

Cambridgeshire County Council News

New website set to help you recycle more

With residents in Cambridgeshire and Peterborough continuing to recycle over half their household waste – a new website has been launched to help them even further.

The Cambridgeshire and Peterborough partnership (RECAP) have today launched a new and improved website www.recap.co.uk to encourage residents to recycle more and reduce the amount of waste they produce.

The site highlights how people can recycle more by putting the right things in the right bin, avoid putting the wrong things such as plastic bags in organic/green recycling and keep everyone up to date with the latest campaigns.

There are films which provide information on what happens to material once it is picked up from your home, including what it is made into and how to use Cambridgeshire's nine recycling centres.

There is also advice on how to reduce waste in the home and links to other sites for additional help.

Cllr Roger Hickford, Chairman of RECAP, said: "In Cambridgeshire and Peterborough, we have a recycling and composting rate of 54 per cent compared to 16.8 per cent back in 1999. This is a phenomenal improvement which is down to a huge effort from our residents and the work of our partners. However we know there is more which can be done to help reduce the amount of waste going to landfill.

"The new website is designed to help with recycling and reduce waste and explain how more can be put into the various recycling bins. We hope people find the site really useful with the videos and easy to access information. The more we can do to help people to recycle the better and we are sure the new website will make a real difference."

Get a FREE NHS Health Check and live healthier and longer

Residents aged over 40 are urged to take up the offer of a free NHS Health Check which could help people live longer and have a healthier life.

The national NHS Health Checks Programme finds out people's risk of heart disease and diabetes.

It offers advice and support on healthy lifestyles that can help people decrease their risk of health problems and also ensures treatment is provided if a health issue is found through the NHS Health Check.

Cambridgeshire County Council commissions the programme in Cambridgeshire and it is mostly offered by GPs. If you are eligible for a Health Check you will be invited by your GP every five years. They are free, take about 20 minutes and are for people aged between 40 and 74 without a known ongoing illnesses.

Val Thomas, Consultant in Public Health at Cambridgeshire County Council, said: "I'd urge everyone between 40 and 74 to accept an invitation from their GP to have their free NHS Health Check – they only take a short amount of time and can help you live a longer and healthier life. Around 300 people die of cardiovascular disease every year and is still the biggest killer in Cambridgeshire of people between 40 and 74. Many of these cases could have been prevented if they had attended a free NHS Health Check and changed their lifestyle. There is help and support on hand for those wanting to improve their lifestyle to improve their health which could be eating more healthily, being more physically active or cutting down on alcohol."

If you want more information about the NHS Health Checks programme ask your GP or go to www.healthcheck.nhs.uk

Help us combat loneliness this winter

With over a million older people in the UK going a month without speaking to someone you can help them beat loneliness by volunteering this winter. Cambridgeshire volunteers are already making a difference and there are loads of opportunities where you can help out.

According to 2011 Census, around 30,000 people in Cambridgeshire aged 65 and over are living alone. Evidence suggests that by sharing your time with an older person and helping them get out and about can have a real impact on boosting their self-esteem, confidence and help them feel a part of their community.

Simple tips for being a good or neighbour to an older person living alone include:

1. **Start a conversation** with those we meet out and about, show interest and warmth, and if they are an elderly neighbour ask if they need any practical help.
2. **Get to know our neighbours** – take the opportunity to introduce ourselves when we see them, particularly those who may live alone or rarely leave the house.
3. **Share our time** – offering from as little as 30 minutes a month, there are ways we can make a real difference. This could be having a cup of tea with an elderly neighbour, dropping in for a chat, helping with shopping or helping maintain their garden during the winter.

Cambridgeshire County Council and its partner organisations have range of volunteer opportunities on offer, including:

[Cambridgeshire Library at Home](#) service uses a network of volunteers to take books out to people who are unable to visit a library, and needs more volunteers.

[Care Network Cambridgeshire](#) would welcome volunteers for their help at home service, supporting people returning from hospital, and as community navigators.

[Community Network](#) is looking for volunteers to run one-hour phone chat groups.

[Contact the Elderly](#) holds monthly Sunday afternoon tea parties for over-75s and needs volunteer drivers and hosts.

[Friends of the Elderly](#) needs volunteers to help with its day centres, telephone befriending groups and coffee mornings in sheltered housing schemes.

[Royal Voluntary Service](#) wants volunteers who can help an older person with little tasks, such as doing their shopping and taking their dog for a walk, or delivering meals.

[The Silver Line](#) needs people to help deliver this new helpline for older people.

[Age UK Cambridgeshire](#) has lots of volunteering opportunities and is currently looking for volunteer visitors for the visiting scheme

For more details on how to volunteer, visit <http://www.cambridgeshire.gov.uk/reachout>

Charlotte Black, Service Director for Older People’s Services at Cambridgeshire County Council, said: “Volunteering and sharing your time with an older person this winter could be the best present you give someone if they are feeling lonely. You can be a good neighbour - a simple friendly chat or a cup of tea can make a massive difference to someone’s day. If you can give more time, why not take a look at some of the local volunteer opportunities?”

Huntingdonshire District Council News

Electoral Review of Huntingdonshire

The independent Local Government Boundary Commission for England is carrying out an electoral review of Huntingdonshire District Council.

The review will draw new council ward boundaries across Huntingdonshire.

The Commission has also announced that 52 councillors should be elected to the council in future: the same as the current arrangements.

Now we are asking for evidence about your local area to help us decide a new pattern of wards for Huntingdonshire.

Your views will make a difference

Local people know their area best. That’s why we are asking you for evidence on a range of issues:

- Do you have suggestions about where your ward boundaries should be?
- Which areas do you identify as your local community?
- Where do people in your area go to access local facilities such as shops and leisure activities?

For more details and interactive maps, visit:

www.consultation.lgbce.org.uk or www.lgbce.org.uk

Have your say

Send your views to:

The Review Officer (Huntingdonshire)

Local Government Boundary Commission for England

14th floor, Millbank Tower

Millbank

London SW1P 4QP

Email: reviews@lgbce.org.uk

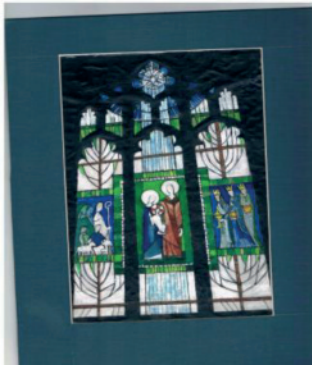
Follow us on Twitter: [@LGBCE](https://twitter.com/LGBCE)

The consultation closes on **4 April 2016**

St Martin's Church, Little Stukeley

St Martin's Church is a historic building for all villagers to use, be it regularly, occasionally or just to admire from the road. Over hundreds of years the building has hosted the weddings, christenings and funerals of many residents. However, in order to save the church from falling into disrepair and being closed or sold we have designed a fundraising programme to cover repair costs.

We have already raised the money required to restore two windows to the front of the church and have completed this stage of the works, but we have more to do. The next window to be restored is the font window at the back of the church (roadside), in addition to restoration we plan to install a new 21st Century stained glass window to enhance the already beautiful church for all the village to see and enjoy.



This is the proposed design and we have already received significant donations. However we still need to raise further funds.

Please Help if you can.

Every penny counts.

You can help in the following ways:

Make a contribution or gift aid a donation

Request our bank details for a standing order to be set up.

Support by attending one of our fundraising activities.



All help is very gratefully received. If you have any other ideas how we can raise further funds please let us know.

St Martins Church Committee.
camilla@uk.com

LITTLE STUKELEY VILLAGE HALL



Burns Night

Our Burns Night was a tremendous success and was skillfully organized by Matt Day and his 'Highland' team, Matt has reported on the event below and passes on his thanks to those that helped and I'd like to thank him too, his enthusiasm and organization made this event truly memorable. Villagers from both Great and Little Stukeley remarked on how good the evening was and are all looking forward to next year's event already. No pressure Matt.....!

On the 23rd January, Little Stukeley Village Hall was turned into a little piece of Scotland as over 60 residents and guests of both Little and Great Stukeley gathered to celebrate Robert Burns.

As is traditional, a number of speeches, readings, songs and toasts were delivered during an excellent Burns Supper of Cock-a-Leekie soup, Haggis, Cranachan and Whisky.

As always the village pulled together to make the event a huge success, with particular thanks to Gill Hossack, Jill and Peter Soinnie, Paula Robinson, Sophie Day and all our evening's entertainers. Special thanks must go to John Burn who delivered the Address to the Haggis with such gusto many were reminded of William Wallace/Mel Gibson, such was the vigour he swung his sword with.

Spurred on by the success of the evening, and no doubt the Whisky consumed, the talk turned to next year's event and we hope to expand the event to include more music and some dancing.

Matt Day Feb 16

Hall Hire

If you wish to hire the Hall for your own events Peter Soinnie (01480 437 584) would be pleased to hear from you and he'll talk you through the arrangements.

Next Events

Our calendar of events is shown below, watch out for updates. I'd be delighted to hear your ideas for any future events and I look forward to seeing you in the Hall. Don't forget we run our Social Club Bar every Sunday 1PM – 2:30PM, it's a great way to meet your neighbours and fellow villagers. For membership of the Social Club please speak to Keith Winter (01480 450 656 05 keithwinter2@sky.com) who will be pleased to make the necessary arrangements.

Saturday	14 th May Social Club Supper Night — Italian theme & Race Night
Sunday	3 rd July BBQ and Rounders
Saturday	3 rd September Flower Show
Saturday	5 th Bonfire and Fireworks
Saturday	19 th November Social Club Supper Night
Saturday	10 th December Christmas Dinner

Please don't hesitate to contact me if you have any ideas for other events or if you would like to get involved, you'd be very welcome and I'd be delighted to hear from you.

David Robinson

davidarobinson@clara.co.uk

07730312964

LENTEN LUNCH

**On Sunday 20th March 2016
at 12.00 for 12.30 pm**

**Come and join us in the Village Hall, Great Stukeley
for a simple Lunch of good wholesome food.**

Bring & Buy Stall will operate as usual

Tickets priced at

**Adults £10.00 & Children £ 6.00 (under 16)
from Mrs Doris Turpin Tel No 456476, Mrs Nancie Raby
Tel No 453269, or any other member of the
St Bartholomew's Parochial Church Council.
(Latest date for tickets Wednesday 16th March)**

***These lunches have a reputation as a convivial gathering offering
value***

for money so you really shouldn't miss this!

You will also be helping your Parish Church!!!

Great Stukeley Flower, Garden and Craft Show 2016

Our annual show this year will be held on **Saturday 6th August**, it has been well supported in the past and hope to see more of you this year (so make a note of the date in your diary).

So, firstly we are seeking gardens to enter the **BEST SPRING GARDEN**. So anyone interested in entering please don't hesitate in getting in touch. Contact myself on 07835630559 or Sylvia Reynolds on 01480 458442. Judging for the best spring garden will take place during Mid-April (or earlier depending on the weather).

The Flower Show committee is looking for sponsors for the following sections: Plants & Flowers, Floral Arrangements and Photography. If you would like to help by sponsoring any of the sections for £20 please contact Carol Buttercase on 458089. The sponsorship can be made in your name, in the name of a business or in memory of someone special. We hope to hear from you.

**Iain Shaw
Flower Show Chairman**

The Great Stukeley Fashion Show II

Thursday 19th May 2016

TICKETS NOW ON SALE.... FOR AS LONG AS THEY LAST!

Time is closing-in fast on our Great Stukeley FASHION SHOW II which will be held on Thursday 19th May 2016 at 7 for 7.30pm. We hope that you plan to join in all the fun by attending this very special event.

There will be a host of Fashion Houses whose outfits, dresses and separates are being featured in our FASHION SHOW including:

BRITISH HOME STORES(BHS) founded in London in 1928. Currently BHS has 179 high street braches selling clothing and household items throughout the United Kingdom.

WHITE STUFF was conceived by George Treves and Sean Thomas, two ski-buffs, selling their *Boys from the White Stuff* t-shirts to fund their skiing habit. Twenty-six years on they sell beautiful women and men's clothes, accessories and home items.

MARKS and SPENCER(M&S) a major British multinational retailer specializing in clothing, home and luxury products. M&S founded in Leeds in 1884 by Michael Marks and Thomas Spencer. In 1998 M&S became the FIRST British retailer to earn a pre-tax profit of over £1 billion.

TICKETS for our FASHION SHOW are NOW ON SALE at a cost of £7.00 each which includes a COMPLIMENTARY GLASS OF WINE for all who support us by attending. Please drop-off your CASH as soon as possible to avoid disappointment. Please note that all NON-RESIDENTS of GREAT STUKELEY are required to enclose a STAMPED SELF-ADDRESSED ENVELOPE with their order(2nd Class or 1st Class mail). Your help and understanding with this request is very much appreciated.

RAFFLE PRIZES ARE DESPERATLY NEEDED

Mary Alleyne-James

Organizer:

11 Owl End

GREAT STUKELEY

Huntingdon PE28 4AQ

Tel 01480 433 954

**BRUNCH on the TEREZA JOANNE with the SECRETS of
SCOTLAND YARD and the BLACK MUSEUM**
Tuesday 15th March 2016
A VERY POPULAR DAY TRIP

A wonderful opportunity to have BRUNCH on the Tereza Joanne followed by a visit to Scotland Yard's BLACK MUSEUM. As this terrific trip draws near I am detailing the day's itinerary.

- 08.00am Arrival at the Great Stukeley Village Hall. Note that there is NO PARKING at the hall.
- 08.15am PROMPT departure by coach as we have a 71 mile journey at rush hour.
- 10.15am Pick up Jeanie Carmichael, our *Blue Badge Holder Guide*, who will be with us for the whole day.
- 10.30am Planned arrival for BRUNCH on the Tereza Joanne, a boat moored at the *Royal Docks*. Remember to bring your camera as the location is great for taking photos of the planes arriving and departing from *City Airport*.
- 10.40am BRUNCH consisting of a full English Breakfast will be served, buffet –style, enabling you to select your own eggs, bacon, sausages, tomatoes, mushrooms, toast and marmalade together with tea, coffee and orange juice. All of which are included in the price of the trip.
- 11.45pm Departure from the Tereza Joanne by coach for a very informative tour of the East End exploring the stories behind some of the exhibits in Scotland Yard's BLACK MUSEUM.
- 1.00am Striking out on foot we will take a short loop across The Mall to see the *National Police Memorial* and then across to Whitehall to see the original site of the *Old Scotland Yard* which is being transformed into an hotel with rooms priced up to £10,000 a night!
- 2.15/ A pause for refreshments where you can buy hot
2.30pm drinks and snacks BEFORE going into the *Museum of London*.
- 3.00pm Enter the *Museum of London* to visit the very special and limited time one-off exhibition-*The Crime Museum Unveiled*- depicting crimes from Scotland Yard's BLACK MUSEUM.
- 4.15pm End of our visit to the BLACK MUSEUM and a chance to buy refreshments and a comfort stop before leaving.
- 5.00pm SHARP. Departure for our return journey to Great Stukeley.

7.00pm Approximate time of arrival, depending on traffic,
at the Great Stukeley Village Hall.

Your support in signing-up for this superb day's trip is very much appreciated and I look forward to sharing the day with you. If you have any questions regarding this trip please feel free to contact me.

Mary Alleyne-James
Tour Organizer
Tel 01480 433 954

THE BRICK LANE MUSIC HALL: Vincent's THE BEST of BRITISH *Tuesday 4th October 2016*

If you like MUSIC HALL with its traditional slapstick humour and singing, dancing and comedy-DO NOT MISS THIS SHOW!

On Tuesday 4th October 2016 we will be visiting The Brick Lane Music Hall situated in Silvertown by the Royal Docks next to City Airport.

This year THE BEST OF BRITISH SHOW will celebrate all that is good from the world of British entertainment with a patriotic feel to mark the Queen's 90th Birthday. This incredible, completely new, show will feature songs from British stars from television, the stage and screen-BRICK LANE'S very own Royal Variety Show.

We will be departing from The Great Stukeley Village Hall PROMPTLY at 11.00am. The doors open at 1.15pm and the show starts at 2.00pm. A delicious CREAM TEA will be served during the intermission which includes homemade sandwiches, pastries, cakes and scones.

I have worked hard with my coach company to bring in a price of £54.50 per person. This includes the return coach journey to London, the superb Music Hall Show, the Cream Tea and a tip for our driver. As BRICK LANE requires an early response please let me know AS SOON AS POSSIBLE if you would like to join us in this very special year of the Queen's birthday which we will celebrate as part of the show.

Mary Alleyne-James
Organizer
Tel 01480 433 954

UPDATE FROM ALCONBURY WEALD

As many of you will see as you go past the site, the team are now in full swing delivering phase 1 of Alconbury Weald. With this in mind we want to use the Parish Newsletter to update people on the next few weeks of work, and our progress on site.

With the new access to the first homes in place, much of our focus has been on getting the infrastructure and landscaping in to enable the first homes to be built. We now have Hopkins Homes on site building the first 128 homes, and a sales launch planned for late Spring, with the first residents moving in this Autumn. This will be in time for the new primary school opening up.

We are also preparing the next housing plots – which will deliver a further 350 homes over the next 4 years. Extensive groundworks and a limited amount of demolition and remediation of hardstanding are under way, which should be complete by the end of March. Residents will be aware of recent noise from removing a couple of the Hardened Aircraft Shelters. There are two more to come down - next to the new school - in the first two weeks of March, and we apologise in advance for the noise. Pro-Dem are undertaking the work as quickly and quietly as possible, bringing in state- of-the-art equipment to minimise the disruption. This will mean that for both the existing and new community, the majority of the noisy works for phase 1 should be completed in the next few weeks. The noise levels continue to be carefully monitored on site and at key points in the Stukeleys to ensure that we remain well within safe levels.

The next stage of planned work will be to put in a new road on site which connects the Boulevard entrance (formerly North gate) with the new housing. This work is starting to open up for the first time the ridge and fencing which has run the length of the site along Ermine Street. The next few weeks will see further landscaping and the creation of ponds as part of the sustainable drainage system. This system is part of the site wide water management strategy which will ensure a reduced and more controlled water runoff from the site than in its previous airfield state.

As part of our work with local partners to increase the capacity of local infrastructure to cope with the growth of the area, we will also be working with the contractors Breheny, and power and water partners to increase capacity in the local network. This will mean some work along Ermine Street, including:

- Starting in March: a 12-week programme of rolling works between the new residential entrance for Alconbury Weald and Mill Road, Little Stukeley. This will involve traffic light controls running between these points where work is underway.

- Intermittent work between now and September on power ducts which will see works happening along Ermine Street from the Iron Bridge up to the Heavy Goods entrance at Alconbury Weald.

Further details about these works will be put on our website as the detailed timetable emerges, and Breheny are working hard with us to ensure work is carried out as flexibly and quickly as possible to minimise disruption.

On the Enterprise Zone, we have secured planning permission for a new global headquarters for MMUK, who employ around 500 people across its office, R&D and production teams. The company processes flower and fruit for luxury retailers. We are also in contractual discussions with a number of other manufacturing and engineering companies which will potentially see another 500,000 sq ft of commercial space being built out in the next year. This is keeping our jobs brokerage scheme - EDGE - busy, and people wanting to find out about forthcoming construction and other jobs on site should contact EDGE on info@sharpperskills.co.uk or by calling the Alconbury Weald office on [01480 277207](tel:01480277207).

These new businesses will also be supported on site by the new Club building – which opens next month and will provide a café, gym and meeting and event space. We will start promotion of those facilities for local people as they come online over the next few weeks.

Tim Leathes, Development Director for Urban&Civic said:

“Things are now really motoring, and all the hard work we put into planning and design to ensure a high quality place to live and work, is now being implemented. We are working hard with our contractors to ensure the work minimizes noise, disruption and traffic on the roads, but also that we maximize the opportunities for local jobs and local business; and as facilities like the gym, café and school come on stream that these can benefit local people as well as new residents.

“As the site continues its transformation, one big change that I know people will notice over the next few weeks, is that the containers which currently line the runway will be off site by the end of March. We know this will have a positive effect on the look and feel of the site, as well as benefits to the local community and road network.”

More information about all the the progress highlighted above will be set out in our Spring Newsletter which will be out March/April. We also look forward to catching up with local residents at the Ermine Street enhancement consultation events [on 29 February](#), (Little Stukeley Village Hall), [2 March](#) (Great Stukeley Village Hall) and [4 March](#) (Alconbury Weald's new Club building). If you would like any additional information or a tour of the site in the meantime to see the progress, please email rbrinton@urbanandcivic.com or call Rebecca on [01480 277203](tel:01480277203) / [01480 413141](tel:01480413141).



Letters to the Editor

Sir,

Mr Monk lambasts me in the last edition of the magazine for speaking hearsay in regard to comments I made in an earlier edition of the magazine. Can I just re-iterate one point; I DO NOT LIE. Therefore, Sir Peter and myself have to disagree as to what he stated in regard to comments made in regard to the agenda length. The old adage comes to mind “he would, would he not, being a politician”!

As to Ms Stef van den Haak resigning that point was made to me by one of the SPC Councillors. Perhaps she was persuaded to recant her resignation prior to the next meeting? I note that Mr Monk carefully uses the phrase “has been formally received” in his comments. Mr Monk is someone I admire by the way for his contributions to this village over the years but he was a professional officer of a County Council and is a master wordsmith.

As Mr Monk states,” Nuff Said”!

Bumbling Bob

Sir,

I write to you in reply to the letters from Mrs Baldwinson in the January issue of the Parish Magazine.

Ms Baldwinson would do well to read properly what is before her. For instance, I never stated I was “so busy with Alconbury Weald Development”. What I said was” I am very busy in my business and with the Alconbury development there will be too much work in the Parish Council for me to have to deal with as well and it would not be fair for me to stand and not do a proper job”. Please get matters right before you criticise Ms Baldwinson.

Lastly the £3,000 was saved by my using my business connections and introducing the head of contracting of a national company to an SPC Councillor so that he could be asked if he would undertake some community based work at nil cost. I had already primed the person concerned. This the company has since done. Thus the SPC making savings of £3,000. Satisfied Ms Baldwinson?

Kind Regards

Bob Hulstrom Dip PFS
IFA Partner

Sir,

I feel I must put quill to parchment and state that I wholly endorse ALL the points that Mr Newman made in his response to the ill-judged letter from Ms Baldwinson in which she made spurious and I believe, totally unfunded comments in regard to Mr Newman's tenure on the Parish Council.

When I joined the Parish Council in the 1990's there were two dominant forces on the council, Mr Pinner and Mr Newman. Now I may not have agreed with either or indeed both at times, indeed many times, BUT what they said and what they undertook they did with transparency and with the Stukeleys villages, yes both of them, at heart. Many were the times that I noted Mr Newman stating that so and so needed doing and the cost will be `X` but not to worry he would do it and the cost would be either nil or the materials cost only. Yes, he could be speaking with a serrated tongue, as can we all, but once the point was made he never carried it on further. Indeed, many a time he was at great pains to point out why he said certain things in Council on a one to one basis with those that he had `speared`; I know I had many such chats!

Mr Newman is a man of great morals Ms Baldwinson and he has served these villages long and tirelessly on the Parish Council unlike those who now seek to criticise him in his retirement. I think an apology, and a personal one, is due to Mr Newman. I look forward to hearing such an apology has been offered.

Kind Regards

**Bob Hulstrom Dip PFS
IFA Partner**

Cambridgeshire Community Foundation (charity number 1103314) is offering grants of up to £5,000 to fund additional social action opportunities for young people, whereby the young people contribute to their community and learn new skills.

The Local Youth Social Action Fund is open to applications from Charities/CIOs and Community Interest Companies working with young people aged 10-20yrs old living in Cambridgeshire.

We have some funds that must be allocated and spent by 30 April 16 and the online application form and more information can be found on the following webpage.

<http://www.cambscf.org.uk/local-youth-social-action-fund.html>

Any questions, please contact: Cambridgeshire Community Foundation

A Proposal to Consider the Removal of Existing and Reduce the Number of Proposed New Road Signs in The Stukeleys

Road signs in The Stukeleys parish are not without cost to our community. Aside from the obvious financial costs, there is a cost to the visual amenity we enjoy: each time a road sign is installed the visual clutter on our roads increases and we sacrifice some of the visual amenity that is one of the desirable features of our environment. For that sacrifice to be sensible, there ought to be a corresponding benefit that outweighs the sacrifice made.

The benefit might be to road users from outside our immediate community – the working mother who's dropped her daughter at the child minder in Sawtry and is using Ermine Street to avoid traffic on the A14 has as much right to use Ermine Street as we do to leave our home in the morning – but there must be a benefit.

As a rural, residential and farming community, visual clutter including road signs has a more substantial impact on (requires a greater sacrifice from) our villages than it would in many other locations. For example, road signs around the entrance to the Ermine Business Park have far less impact there than they would if placed in the centre of one of our villages because the visual amenity at a business park is already at a low level.

Identifying the benefit that balances the sacrifice made in a loss of visual amenity is not difficult.



The image above of Church Way in Little Stukeley has a variety of visual clutter, but for most of it it's easy to see the benefit we get from the sacrifice.

1. Parked cars – the benefit of parking close to our homes outweighs the visual clutter of all those cars.
2. Wheelie bins – using robust containers and separating our rubbish for easier recycling helps reduce our impact on the environment.
3. Wooden poles, electrical equipment and overhead wires – electricity, landline telephones and broadband all have benefits for our lives that outweigh the sacrifice from the visual clutter.
4. The dead-end signs – is there any benefit? Each year, how many drivers are dissuaded from driving down Church Way because there are signs telling them it goes nowhere other than Church Way? Probably none.

Certainly in this instance our visual amenity would be improved with no identifiable loss of benefit by the removal of the dead end signs from the beginning of Church Way.

For a road sign to give a benefit that outweighs the sacrifice in reduced visual amenity it must give drivers useful information and modify their driving behaviour. A speed limit sign, for example, informs drivers of the speed limit and law abiding drivers match their speed to the limit. A double yellow line informs drivers of parking restrictions and law abiding drivers comply with the restrictions when they park. In both cases, benefits are gained from the sacrifice of increased visual clutter – speed is reduced to perceived safe levels and parking is controlled to minimise congestion and disruption.

Many of the signs in our village appear to offer no benefit. Perhaps the best examples of visual clutter that offer no benefit are shown below.



Freshly installed on a brand new lamppost outside Great Stukeley village hall, the sign contains the word 'End' with no clue at all about what ends at that location. That small increase in visual clutter has absolutely no corresponding benefit.



Similarly, the two thirty miles per hour speed limit signs in Church Road outside the Stukeleys County Hotel are freshly installed with new poles and lighting, but Church Road is already completely within the 30 mph speed limits imposed on Ermine Street and the signs in Church Road are entirely unnecessary. Again, a substantial increase in visual clutter for no benefit whatsoever.

Even some seemingly necessary road signs are of dubious benefit. For example, what benefit do we get from the playground signs in both of our villages? What do we expect that a driver will do differently for seeing the sign? The sign itself requires no changes to the driver's behaviour. It does not, for example, require a change in speed. It can be argued that the sign is intended to make drivers more observant around playgrounds and to watch for children attempting to cross the road, but how likely is it that a driver who would not be observant enough to see children attempting to cross the road will see a playground sign and then modify their driving behaviour? Probably very unlikely.

Perhaps then these signs are required by law or regulation and the benefit we get from them is that the road authority is in compliance with the law and cannot be held negligent if an accident occurs.

The image below shows the junction of Green End with Ermine Street as approached from the Stukeleys and has a distressing level of visual clutter including two chevron signs indicating the road's route through a bend.



Perhaps the physical parameters of the bend meet or exceed some measure defined in law or regulation and the signs are mandatory? If so, why are there no matching chevron signs on the same bend approached from the opposite direction? All of the physical parameters are the same so that if the signs are there to meet some legal requirement they should also be installed on the opposite approach.



The absence of signs on the approach from Huntingdon suggests that there is no legal or safety requirement for chevrons on that bend and the visual clutter on the approach from Great Stukeley could be removed from the street scene without loss of benefit to any road user.

There are multiple other examples of road signs that clutter our visual amenity and therefore have required a sacrifice from our community, but which do not offer a corresponding benefit.

The proposed enhancement works to Ermine street through our villages gives us an opportunity to reduce the visual clutter and minimise the impact on our rural community.

Recommendations

It is recommended that The Stukeleys Parish Council:

1. Consider every road sign proposed in the enhancement works for Ermine Street and make certain that the identifiable benefits to be achieved from each proposed road sign outweigh the visual amenity that will be sacrificed by its installation.
2. Work with the highways authority to actively review the purpose and benefit of each road sign in our villages, identify signs for which the sacrifice outweighs the benefit and where signs are found to have insufficient benefit, request their removal.

At the Parish Council meeting on 1 February both recommendations were proposed and agreed and are now part of Council policy.

Community Coffee Morning

Wednesday 30th Mar 2016

10.30 – 12.00

At Great Stukeley Village Hall

(and every last Wednesday

27 Apr, 25 May, 29 June, 27 July, 31 Aug, 28 Sept, 26 Oct & 30 Nov)

The Stukeleys WI are holding a community coffee morning every last Wednesday of the month to raise money for Young Carers Huntingdon and The Stukeleys WI.

Do come and join us. Children are welcome – we have a kids' corner to keep them amused.

THE STUKELEY'S POPPY APPEAL 2015-16

COFFEE MORNING

Village Hall Great Stukeley
FRIDAY, 4th MARCH 2016

10.30am -12.00

Door Prize, Bring & Buy, Raffle
Cake Stall etc.

PLEASE COME AND SUPPORT US



LONDON CHRISTMAS SHOPPING, CARVERY CLUB
LUNCH and CHRISTMAS LIGHTS and SIGHTS
Tuesday 6th December 2016

Few capital cities rival London's history, it's exhilarating buildings and a handsome river crisscrossed by floodlit bridges.

We will meet at 8.15 am PROMPT at the Great Stukeley Village Hall to pick up our coach which will take us for Christmas Shopping at the *Westfield Stratford City Mall* in London. We will then meet up with our Blue Badge Holder Guide, Jeanie Carmichael, at 1.30pm at the *Strand Palace Hotel* to enjoy a tasty two-course meal in their swish carvery.

After lunch we will rejoin our coach to enjoy the *Christmas Sights and Lights* in the City and the West End and learn about some of London's secret treasures and new buildings.

Before heading home, around 6pm, we will finish our day at *The South Bank Christmas Market* where we can buy some refreshments and maybe some last minute "stocking fillers" before our journey home. We plan on arriving back in the Stukeleys' around 8pm.

This wonderful day out in London will include:

Christmas Shopping at the *Westfield Stratford City mall*.

A delicious two course Carvery lunch at the *Strand Palace Hotel*-drinks NOT included.

Your coach journey to and from and within London

A limited time visit to *The South Bank Christmas Market*.

Your Blue Badge Holder guide with tips for the Guide and our driver.

With some arm-twisting I am able to offer this trip at a very competitive price of £45.50 per person.

PLEASE CALL AS SOON AS POSSIBLE to reserve your seats and to avoid disappointment.

Mary Alleyne-James

Organizer

Tel 01480 433 954

PETERBOROUGH GREYHOUNDS

Friday 17th June 2016

We will be departing promptly at 6.15pm on Friday 17th June 2016 for an exciting evening at the GREYHOUND STADIUM which is located at Fengate in Peterborough.

I am awaiting news from PETERBOROUGH GREYHOUND STADIUM confirming the price of our summer visit and a copy of their June menu. As soon as this has been received, within the next 4 to 6 weeks, I will share this with you.

I am reserving everyone booked on this wonderful visit on the SILVER PACKAGE which is a three-course dinner menu. We will be seated in their RACEVIEW RESTAURANT and the price per person should be around £33.00 to £ 37.00, including the coach to and from Peterborough and the driver's tip. Please note that restaurant tips are at your discretion, and drinks are not included in this cover price. Betting can be made directly from your table. Here are some of the most popular bets

TO WIN This is a single bet requiring you to nominate
THE WINNING GREYHOUND

TO PLACE This is the simplest bet of all and requires
you to nominate the Greyhound which
finishes either first or second

EACH WAY This is two bets-a win bet and a place bet on
the same Greyhound. If your selection wins,
you will receive one win divided (from the
win pool) and one place dividend (from the
place pool). If your selection comes second,
you will receive the place dividend only.

If you would like to be part of this most entertaining evening, PLEASE RESERVE without delay.

Mary Alleyne-James

Organizer

Tel 01480 433 954

THURSFORD'S CHRISTMAS SPECTACULAR 2016 *The Best Christmas Show...Ever*

I am expecting a positive response from THURSFORD
following the 2016 EASTER BREAK.

Once the good news arrives I will be able to work out the cost of our trip to this year's
CHRISTMAS SPECTACULAR. This will all depend on our seat allocations.

Due to THURSFORD'S tremendous popularity I have had to once again INCREASE my group
size. This year it will be to fifty-seven (57). It is no exaggeration to say that THE THURSFORD
CHRISTMAS SPECTACULAR is the most popular Christmas event in the United Kingdom. There
will be dangerously dazzling dancers in costumes so extravagant that they make your eyes pop
out of your head! Christmas-happy folk really do flock here from all over the country each day for
performances during the Festive Season.

The dates that I am working on for 2016 are:

Sunday 20th November 2016(Preferred)

Sunday 27th November 2016(Alternative)

If you have any questions regarding this truly wonderful annual show, please feel free to make
contact with me.

Mary Alleyne-James

Trip Organizer

Tel 01480 433 954

THE STUKELEY'S W.I.
THE MINUTES OF MEETING WEDNESDAY 10th February 2016

The President, Jan Sly welcomed 22 members to the meeting and apologies for absence were received from six members. Jan reminded us that our W.I. was 98 years old this month.

Jerusalem was sung and the minutes were read and signed as correct.

Jan read out a letter in which Kath Simpson tendered her resignation from the Committee, being secretary and Vice President.

Jan belatedly thanked Marlene Garner, Freda Butter, Betty Aveling and Sue Clark for their help at the last meeting.

Correspondence: We received a 'thank you' letter from Magpas for the donation of £500.00 and stating this had now become £595.75 with the government rebate. Jan also praised the inventiveness of the competition which was, something orange.

Forthcoming events: Annual Federation day - booking form is in the newsletter. Booking must be made by the 12 March. Speakers are Julie Summers, author and David Whitely from TV 'Inside out'.

There is a 'Taste of Denman' day - three people have booked. There is a scrapbook workshop at the Huntingdon HQ. Clean for the Queen - we would like to get a working party to smarten up the gardens at the village hall.

There is a trip to Norwich and an intro to digital storytelling, booking forms are in the Newsletter. There is also a coffee, craft and chat session this Saturday 13th February, if anyone would like to go, just pop in.

Speaker: Our speaker was Nick King from Amey recycling centre. He told us about his life as a teacher and although he now worked for Amey he was still on the education side of the business. He informed us which things were recycled, what sort of things got mashed up and was sterilised to make soil improver and also how the rubbish which went into land fill was organised in order to make it safe. This talk was very interesting and it made us all question, can we recycle more.

It was voted, by the members, that this year's charity should be "the young careers of Huntingdon".

Jan thanked Nita Charter and Freda Butter for the refreshments, Nita for the draw prize and Freda did the Curtis bowl.

Draw prize was won by Nita Charter. Competition was won 1st Mary Ward. 2nd Nita Charter. 3rd Doris Sadler.

Jan wished everyone a safe journey home and the meeting ended at 10.10pm.

Next Monthly Meeting: On Wednesday 9th March at 7.30pm.

Speaker: Mrs Wallace-Pope - history of Tartan and kilts.

Curtis Bowl: Nicki Sly Draw: Ruby Papworth

Refreshments: Jennifer Liddell and Deanna Strange.

Competition: Something Scottish

Roll Call: Your favourite Scottish personality.

Deanna Strange



Save up to 75%:

- High/complex prescription
- Premium frames & lenses
- Reglaze your own specs*
- Specs for all sports & trades

(Complete frame & lenses)

- Single vision specs from just £9*
- Bifocals specs from £39*
- Varifocal specs from £59*
- Prescription sunspecs from £49.00*

- Excellent customer service
- FREE specs for NHS vouchers*
- Large selection of specs frames
- Specs repairs & emergency supply*

*T & C's apply, please ring for details. For customers aged 16 and over only.

Need glasses?

Buy direct save ££



Shop local, pay internet prices:

ALL EYES Specs Makers

20 Norman Way Ind. Park,
Over, Cambridge CB24 5QE
Mon - Fri (9.00am - 5.00pm)

Tel: 01954 231545 Mobile: 07824 706969

Website: www.all-eyes.co.uk

(PLEASE RING FOR AN APPOINTMENT)

**M&D
FLOORING**

A Family Run Business

- CHOOSE SAMPLES IN THE COMFORT OF YOUR OWN HOME
- ALL FLOORING SUPPLIED AND FITTED AT COMPETITIVE PRICES
- DOMESTIC AND COMMERCIAL INSTALLATIONS
- UPLIFT AND DISPOSAL OF OLD FLOORING
- FURNITURE MOVING SERVICE AVAILABLE

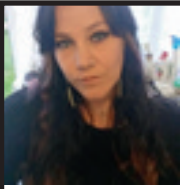
- CARPETS
- VINYLs
- LAMINATES
- SOLID WOOD FLOORING
- LUXURY VINYL TILING
- ENGINEERED WOOD FLOORING

To make an appointment please call

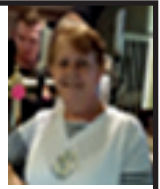
Matt Silsby Mob: 07871 277244
Eve: 01487 812825

Visit us at www.M&Dflooring.co.uk
Email: info@M&Dflooring.co.uk





Victoria
Licensee



Averil
Manager

THE THREE HORSESHOES IS UNDER NEW MANAGEMENT

Friendly family pub with great atmosphere
plus private party bookings available.

Opening Times

Monday 3.30pm until 11pm

Tuesday to Saturday 12 noon until 11pm

Sunday 12 noon until 10.30pm

Every month a live band or disco/karaoke 7pm till late

Keep an eye on the board outside the pub for more details

Keep in touch for more events-gigs-etc.

Victoria 07730579725 - Averil 07804775746

missv_lover@yahoo.co.uk also available on facebook



Esme's Sewing Services

Esmeralda

All sewing and alterations undertaken

Just email or call for a quote

Repairs, alterations, zips, wedding dresses, curtains,

jackets, trousers and more

esmesewing@yahoo.co.uk

07910 569345

A. DYOS LTD

Multi Trade Handyman Services

Family Run Business Established Over 25 Years

All Building Trades Covered

Carpentry, Plumbing, Plastering, Decorating etc.

No Job Too Small, Free Estimates & Advice

Tel: 01480 450107 / Fax

Mob: 07958 493555 / 07985 634569

Email: dyos3@hotmail.com



STUKELEY'S COUNTRY HOTEL

Telephone 01480 456927

A few dates for your diary

BOOK NOW FOR

MOTHERS DAY – SUN 6th MARCH

ST. PATRICKS, LIVE MUSIC – SAT 19th MARCH

EASTER SUNDAY – SUN 27th MARCH

MON-THU, BOTTLE OF WINE AND 14" PIZZA £14.95

FRI-SAT, BOTTLE OF WINE AND 2 STEAKS

£24.99

£5 OFF

A MEAL FOR TWO AT STUKELEY'S HOTEL

*Complete your details and present this voucher
(USE FOR MAIN MEALS ONLY)*

Name:.....

Address:.....

This voucher is not valid in conjunction with any other
Special promotion. Valid until April 2016



Step

by

Step

...we'll lead the way...

Ballroom & Latin American Dance Classes

Adults : Monday evenings : Bluntisham Village Hall

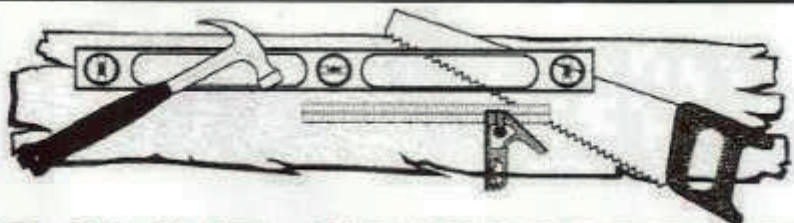
Thursday evenings : Alconbury Memorial Hall

Friday evenings : Houghton & Wyton Memorial Hall

Children : Sunday afternoons : Houghton & Wyton Memorial Hall

For further information please
email enquiries@stepbystepballroom.co.uk
or telephone 07876 130037
www.stepbystepballroom.co.uk





DAVID HUMPHREY

Carpenter & Joiner

21 Lake Way, Stukeley Meadows, Huntingdon, Cambs PE29 6SU

VAT Registration No 759 633 89

Small works
Fitted kitchens
Loft conversions
Windows & Doors
General property repairs

Call today for a free quotation.

Tel: 01480 432275 Mob: 07788 428580 Fax: 01480 451566

The UK's No.1 Lawn Care Company



- Scarification
- Aeration
- Lawn Fertilising
- Weed Control
- Moss Control
- Water Conserver
- Pest and Disease Management



GreenThumb has a variety of treatment programmes to suit your pocket that include our traditional 'pay-as-you-go' service and our new, pay monthly, Direct Debit programmes, where you can save up to 25% annually.

Our treatments start from £5 per month, that's cheaper than D-I-Y and without the hassle!

Call your local branch today for a FREE lawn analysis and no obligation quote.

0800 0111 222

GreenThumb
LAWN TREATMENT SERVICE



Find us online at: www.greenthumb.co.uk



TRANSFORM
YOUR CURRENT
COOKER
IN AS LITTLE AS
2 HOURS

FREE
Replacement
Bulbs
Service

"Better Than New"
"Absolutely Thrilled"

Easy
CALL, QUOTE
& BOOK

"Fantastic Service"
"Clean & Shiny"

OvenGleamers
SATISFACTION
GUARANTEE
SINCE 2004

"Definitely Use You Again" "You Certainly Live Up To Your Name" "Cleaner Than When First Bought"
Just a few of the wonderful comments that our clients have said recently.

Our OvenGleamer will come into your home and professionally degrease and remove any burnt on carbonised food from your Oven, Cooker, AGA or Range. Would you like an "as new-looking" cooker again?



Call us NOW **01223 750909**

AGC SERVICES



Provides:

Boiler Servicing & Installation

Help if you have Central Heating Problems

Electrical Installation & Fault Finding

Fully Gas Safe Registered & Corgi Electrical Registered

Domestic and Commercial



For Friendly Advice on Heating, Gas and Electrical Problems

Call Nino on:

01480 412483 or 07786 437126

Or Email augustingaetano@talktalk.net

**THE CHURCH OF
JESUS CHRIST OF LATTER DAY SAINTS.
ERMINE STREET, GREAT STUKELEY,
NEXT TO THE VILLAGE HALL.**

Bishop Matthew Wade

Sunday Services

10.00am to 11.15am Sacrament Meeting

11.15am to 12 noon Sunday School Classes for 12 years old and over.

11.15am to 1pm Primary For under 12 year olds, and Nursery for 18 month old to 3 years old.

12 Noon to 1pm Relief Society Meeting for Sisters 18 years and over(Women)

12 Noon to 1pm Priesthood Meeting for Brothers 18 years and over(Men)

12 Noon to 1pm Young Men and Young Women Classes for 12 to 18 year olds.

All are welcome to come and join us.

Weekday Meetings

Every Tuesday:

Youth Meetings for 12 to 18 year olds from 7.30pm to 8.30pm

First Wednesday of each month:

Sisters Meeting from 7.30pm to 9pm



GRACE FELLOWSHIP



An International English Speaking Baptist Church for Everybody

Love God: Love People: Care for the World

For God so loved the world that He gave His only Son. John 3:16

Why not come and join us? A warm welcome always awaits you. All of our meetings are open to you.

Every Sunday	9.45 am	All Age Bible Study
	11.00 am	Worship Service (Lord's Table on 4 th Sunday each month)
	3.00 pm	Afternoon Worship at Great Gidding Baptist Church
Every Wednesday	7.00 pm	Prayer Meeting
Every Saturday	7.30 am	Pastor Doug's Prayer Meeting
Men's Breakfast		
Saturday 12 th March '16	9.00 am	All men welcome, come and bring a friend

If there is any way in which we can help or any questions you need to ask please call Pete and Penny Bourne on 01480 432207 or 07887707940 / 07908093224 or email us at bourneagain38jer333di@gmail.com or pennyanne.bourne@gmail.com or phone David Stokes on 01480 891023 and we will do our very best to help. If you need help with transport to any of the meetings just call Pastor Pete or Penny as above.

Criticism

Horse Sense

I found this little yarn in a book I have been looking through and as I used to love to ride and drive horses found this funny yet true.

A horse can't pull while kicking, this fact we merely mention, and he can't kick while Pulling, which is our chief contention. Let us imitate the good horse, and lead a life that's fitting, just pull an honest load, and then there'll be no time for kicking. Alongside this was the following,

Our hope is not in the man we put on the moon, but in the one we put on the cross. I am disappointed at this moment as I had meant to join St Bartholomew's for worship before Going to Grace Fellowship and as yet not been able to but I hope to put this right soon as Penny seems to be getting a little better now after a very long time feeling unwell, And I thank all those that have kept her in their thoughts all this time. God bless all

Pastor Pete

CHURCH SERVICES



**ST BARTHOLOMEW'S
GREAT STUKELEY**



**ST MARTIN'S
LITTLE STUKELEY**

March

6th Fourth Sunday of Lent Mothering Sunday	9.30 am Celebrant	Holy Communion CW Rev'd Andrew Milton		No Service
13th Fifth Sunday of Lent	8.00 am Celebrant	Holy Communion CW Rev'd Andrew Milton		No Service
	9.00 am Leader	Family Service Alan McGoff		
20th Palm Sunday	9.00 am Celebrant	Holy Communion CW Rev'd Andrew Milton	8.00 am Celebrant	Holy Communion Rev'd Andrew Milton
27th Easter Sunday	9.00 am Celebrant	Holy Communion CW Rev'd Charles Dixon	9.00 am Leader	Holy Communion Rev'd Andrew Milton

April

3rd Second Sunday of Easter	9.30 am Celebrant	Holy Communion CW Rev'd Andrew Milton		No Service
-----------------------------------	----------------------	--	--	-------------------

WHO'S WHO IN THE CHURCHES

Churchwardens	Richard Turpin Montagu House 1 Church Walk Great Stukeley	Sue Pond Church Way Little Stukeley
	Harry Raby Brookfield Farm Great Stukeley	Camilla Payne Old Rectory, Church Way Little Stukeley
Secretary of the Parochial Church Council	Alan McGoff 4 Seathwaite Stukeley Meadows Huntingdon	Camilla Payne Old Rectory, Church Way Little Stukeley
Vice Chairman of the Parochial Church Council	Richard Turpin Montagu House Church Walk Great Stukeley Tel: (01480) 456476 Fax: 07092 365508	Jocelyn Kerr 2 Mill Close Little Stukeley Tel: (01480) 453213
Rector	Revd Andrew Milton Tel: (01480) 412674	

Independent Financial Advice

01480 451 412

www.huntsifa.co.uk



- **Is this how you feel when faced with a financial decision?**
- **One which you do not really have the skill or knowledge to decide upon?**

We specialise in helping people aged 60 plus make the right decision in the following areas;

- **Equity Release**
- **Impaired Annuities**
- **Pension Transfers**
- **Long Term Care**

**Don't leave one of the most important decisions of your life to luck; speak to the specialist
NOT**

'Dom down the Pub' or 'Beryl-Ann in the Hairdressers'!

We have 21 years experience and 1,000's of satisfied clients

**Ring us on
01480 451 412
for a free interview
to discuss your needs.**



positivesolutions[®]

altogether **individual**

3 Royal Oak Passage High Street Huntingdon Cambs PE29 3EA 01480 451 412



"If you want the best from yourself, invest in yourself!"

Relaxation, Wellbeing
Injury Prevention & Rehab

**Relieve: Pain, Muscle Tension,
Headaches, Stress, Repetitive Strains**

Improve: Flexibility, Back Stiffness,
Circulation, Performance



Treatments
for:
Individuals
Sports Clubs
Corporate



Locally Based & Mobile

Zestsportsandspa.com

Contact Clare 07738 424079

Yoga with Jane

Hatha Yoga for mixed ability

Thursday evenings 7.15-8.45 pm
Little Stukeley Village Hall

Tuesday evenings 7.30-9.00 pm
Brampton Primary School

Ongoing courses – book today!
£35 for a block of 5 sessions



Relax, Stretch, Strengthen

Become flexible and mindful

Contact Jane on 07958 757076 for
details and to book

jane.clark@virgin.net

www.yogawithjane.co.uk

Your Local Printer

- Business Cards
- Leaflets
- Flyers
- Forms
- Booklets
- Tickets
- And so much more...

**NOW
PRINTING
CLOTHING**

www.easiprint.biz
01480 718270

FREE DELIVERY

easiprint

23 Levellers Lane Ind Est, Eynesbury, St Neots, Cambs, PE19 2JL

R&R
DECORATING
OF SAWTRY

Shortly to change name to:
Alconbury & Weald Decorating Services

A Local Qualified Decorator
Reasonable Rates - Reliable

Insurance Work undertaken - Internal & External Decorating
Painting - Wallpapering - Coving - Property Maintenance - Roof
Maintenance - Gutters also cleaned, repaired or replaced

Local References on request

Give Rob a call on 07971 337581 or 01480 891961

Or email: r.bates01@btinternet.com

