



# JUNE 2015



Corner of Great Stukeley Village Hall facing Owl End



Defibrillator Container  
See Page 9 for information.



Little Stukeley Brick bus shelter.  
North side Ermine Street



Jane after about 24 miles  
Looking good and still smiling!

## Bob Hulstrom writes about his wife, Jane's London Marathon Triumph!

She finished in 4h25m35s. BUT she still failed to beat her husband's time by 29 seconds!

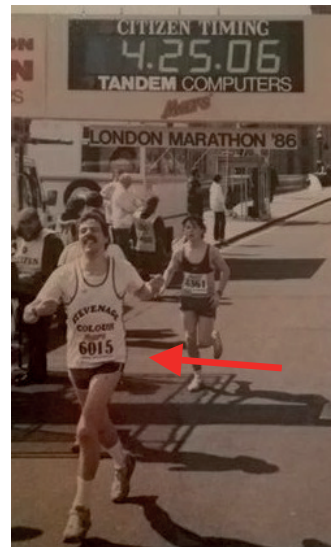
She passed over 1,207 people in the last 7.5K alone and only 46 passed Jane.

She finished ahead of 36% of the male runners in the race; Girl Power!

She raised over £3,000 for the SENSE charity by making and selling Christmas

Chutney, Jams and Cakes plus from individual donations.

**Editor's note:** Well done Jane. Chivalry forbids me stating a lady's age but suffice to say that Bob was several years younger when he ran the London Marathon.



Bob Hulstrom finishing the London Marathon in 1986!



**FULLY INSURED  
PROFESSIONAL AND  
RELIABLE PROPERTY  
SERVICES**

**01480-436747**

[enquiries@hpp-ltd.co.uk](mailto:enquiries@hpp-ltd.co.uk)

Visit our website at:

[www.hpp-ltd.co.uk](http://www.hpp-ltd.co.uk)

- Refurbishments
- Renovations
- Extensions
- General Building Work
- Kitchens
- Bathrooms
- Home Make-overs
- Garage Conversions
- Block Paving
- Patios
- Decorating



osteopathy | physiotherapy | acupuncture | chiropody | pilates | alexander technique



**Enhance Your Well Being With Our Natural Health Treatments**

With over 20 years experience working with local GP's, we're able to offer a range of the most relevant natural health and complementary therapies

This includes treatment for:

- ↘ back & neck pain
- ↘ headaches
- ↘ sport injuries
- ↘ foot problems
- ↘ other muscol oskeletal problems

Contact us for advice and information on our wide range of treatments

call: **01480 455221**

mail: [info@CentreForCompHealth.com](mailto:info@CentreForCompHealth.com)

visit: [CentreForCompHealth.com](http://CentreForCompHealth.com)

6 Cambridge Road, Godmanchester PE29 2BW



BUPA and PPP Registered Providers

# July 2015 Magazine Cut-off Date

The cut-off date for the July Stukeleys Parish Magazine is  
**9am Friday 19<sup>th</sup> June 2015**

## FUTURE EVENTS

Mon 1 <sup>st</sup> June	Parish Council Meeting	7.30 pm	LSVH
Sat 6 <sup>th</sup> June	Ceilidh	7.00 pm	LSVH
Mon 8 <sup>th</sup> June	LSVH AGM	7.30 pm	LSVH
Wed 10 <sup>th</sup> June	WI Committee Meeting	7.30 pm	GSVH
Sun 21 <sup>st</sup> June	Hunts 10k Run	7.00 am - 1.30 pm	Alconbury Weald
Sun 21 <sup>st</sup> June	Wytchwood Open Garden	1.30 pm - 5.30 pm	7 Owl End
Sun 5 <sup>th</sup> July	Great Stuekely Open Gardens	11.00 am - 5.00pm	GS
Sun 12 <sup>th</sup> July	BBQ & Games Afternoon	3.00 pm	LSVH
Sat 5 <sup>th</sup> Sept	Flower Show	3.00 pm	LSVH
Sat 7 <sup>th</sup> Nov	Bonfire & Fireworks	6.00 pm	LSVH

Take a look at the Magazine website at [www.stukeleymag.co.uk](http://www.stukeleymag.co.uk)

Email to: Martyn at [martyn@stukeleymag.co.uk](mailto:martyn@stukeleymag.co.uk)

Post/drop in to: 7 Hill Close, Great Stukeley PE28 4AZ

Tel: 01480 432633 Mob: 07710 171924

Please include your phone number in case of queries.

Space in the magazine is limited, so articles should be about 300 words. This is to allow as many people as possible the opportunity to contribute to the magazine. It would be helpful if you could submit articles sized to an A5 page in Word or PDF.

We reserve the right to refuse an article, cut its length or hold it over to a later issue without notice.

**Please Note:** This magazine is published by Martyn Fox with administrative and financial support from The Stukeleys Parish Council. The opinions expressed are not necessarily those of the Editor or of the Parish Council

A charge is made to advertise in this magazine. All enquiries should be directed to Martyn Fox (Tel: 01480 432633) or Carole Pollock, the Clerk of the Parish Council (Tel: 01480 464817).

## This Month

Pages 4-7:	Stukeleys Parish Council News
Pages 8-9:	Community Defibrillator Seminar
Page 10:	Little Stukeley Village Hall
Pages 11-12:	Letters to the Editor
Page 14:	Village Litter Pick
Page 15:	GS Flower, Garden & Craft Show
Page 16:	The Stukeleys Heritage Group
Pages 17-20:	Huntingdon 10K Charity Run 2015
Page 21:	Great Stukeley Open Gardens
Page 26:	Wtchwood Open Garden

The full Report on The Parish Council Annual Meeting can be seen on the Stukeleys Parish Magazine website at [www.stukeleymag.co.uk](http://www.stukeleymag.co.uk) If you do not have access to the Internet please contact the Editor for a copy.

## THE STUKELEYS PARISH COUNCIL NEWS

7 Parish Councillors, 1 County Councillor, 1 District Councillor, 1 Parish Clerk and 1 resident attended the Annual Parish Council Meeting held at Great Stukeley Village Hall on the 11<sup>th</sup> May 2015. Apologies received from Cllrs Sally Smith and Stef van den Haak.

Cllr Sue Parkin was elected as Chairman of the Parish Council for the next 12 months with Cllr Barrie James as Vice Chairman.

The following councillors and non-councillors were elected as members to the following committee or offices for next 12 months:

**Rights of Way Committee**- Cllrs Philip Hobson, Karl Gasson and Sally Smith

**Lighting Committee** - Cllrs Paul Vincent, Stuart Bell and Sally Smith

**Playing Fields Committee** - Cllrs Paul Vincent, Barrie James and Sally Smith

**Finance Committee** - Cllrs Barrie James, Karl Gasson and Philip Hobson

**Personnel Committee** -Cllrs Barrie James, Karl Gasson and Stuart Bell

**Planning Advisory Group** - Cllrs Michael Monk, Barrie James, Stef van den Haak and Stuart Bell

**Tree Warden** - Cllr Sue Parkin.

**Dog Warden** - Cllr Sally Smith.

**Highways Warden**- Michael Reynolds

**Webmaster** – Cllr Karl Gasson

**Maintenance of Public Open Spaces and Verges Warden** – Cllr Stef van den Haak

The following representation on external bodies and groups were agreed:

**Traffic Group** - Cllrs Michael Monk, Sue Parkin, Philip Hobson and Diane Gee

**Joint Parish Liaison Group** - Cllrs Michael Monk and Barrie James

**Local Joint Committee** - Cllr Stuart Bell

The Parish Council's policies, procedures and terms of reference were reviewed and confirmed. The dates of the Parish Meetings for the year 2015/6 are to be held on every first Monday (that are not Bank Holidays) of the month (except August & January) alternating between the village halls of Great Stukeley and Little Stukeley. The next meeting is therefore scheduled for the 1<sup>st</sup> June 2015 at Little Stukeley Village Hall.

Cllr Barrie James advised the meeting that at the recent defibrillator training seminar that 25 residents had attended and that he hoped to arrange another training session in September.

The 2014/15 Annual Return and Financial Statement were approved and signed.

Wiser Electrical Recycling are to hold another collection of electric goods to be recycled on Monday 21<sup>st</sup> September – so please hang on to your obsolete electrical goods until collection day – as this event raises funds for the Parish.

Following the Public Meeting with Balfour Beatty on the 8<sup>th</sup> May it was decided not to request that some lighting units not to be removed in Church Road, Montagu Road, Moorfield Way and Hill Close as they would cause gaps in the lighting plans elsewhere.

The following planning application was considered by the Parish Council:

- i        **44 Low Road, Little Stukeley - 15/00534/HHFUL** – Enlarge existing garage to include one additional parking bay by side, a workshop to rear and ancillary accommodation over.  
 After discussion it was **RESOLVED** to recommend approval as there would be no adverse impact on either the street scene or the locality.
- ii       **Alconbury Weald, Ermine Street -15/00540/REM** – Application for approval of appearance, layout, landscaping, access and scale in respect of the construction of new highways (inc. associated highways landscaping), SUDS drainage infrastructure (inc. drainage ponds and ditches) and all associated engineering and earth works, inc. ground remodelling and ancillary works  
 Following a recommendation from the Planning Group and further discussion it was **RESOLVED** to respond to the application as follows: The application is made for reserved matters (all matters- access, appearance landscaping, scale and layout) pursuant to the overall outline, however development proposed is engineering based comprising roads and drainage infrastructure relation to the EZ and as such is 'up front' works to facilitate employment development. The application is properly made and that it is consistent with the provisions of the outline permission in relation to process tier of submission and detail. Although the Council is not competent to comment on the engineering details of the highways or drainage; the layout and detail appear to be consistent with the overarching strategies for the site from the OL and subsequent condition discharge approvals. It is noted that all of the works will be carried out in accordance with the approved code of construction practice and as such external impacts should be minimised.  
 The Parish Council offer support to the proposed infrastructure works within the EZ to encourage commercial and employment development consistent with the EZ and the approved overall outline for Alconbury Weald.
- iii      **Alconbury Weald, Ermine Street -15/00542/REM** – Application for approval of appearance, layout, landscaping and scale in respect of the delivery of new landscaping including all associated land remodelling and associated works  
 Following a recommendation from the Planning Group and further discussion it was **RESOLVED** to respond to the application as follows: This application is made for the strategic landscaping and planting on the periphery of the Enterprise Zone. The application is properly made and that it is consistent with the provisions of the outline permission in relation to process tier of submission and detail. The details of the earthworks and drainage (water) are consistent with the drainage details in the first application.  
 The earthworks appear to be well considered and the planting is in accordance with the overall strategy. The Parish Council offer support to the proposed landscaping and planting works within the Enterprise Zone and are pleased that the Enterprise Zone will provide a high quality working environment to encourage commercial and

employment development consistent with the Enterprise Zone and the approved overall outline for Alconbury Weald.

- iv Land at 67 Ermine Street, Great Stukeley – 15/00328/FUL – 3**  
Bedroom detached 1.5 storey dwelling  
Following a recommendation from the Planning Group and further discussion it was **RESOLVED** to recommend approval as:
- there would be no adverse impact on the street scene
  - the proposed house would be seen against the backdrop of existing housing in depth in Elm Road and Beech Avenue so there would be no adverse impact on the openness of the landscape of Stukeley Park
  - the proposed house would not impose on the outlook from the adjacent house to the north as would have the previous application refused by the district council
  - it would provide a modestly scaled new house of a type which is in short supply in the village.
- v 9 Church Road, Great Stukeley – 15/00633/HFUL – Proposed two**  
storey side extension and single storey rear lean to extension.  
Following a recommendation from the Planning Group and further discussion it was **RESOLVED** to recommend approval as:
- the design is sympathetic to the existing building
  - the proposed extension would augment and not dominate the original cottage
  - the proposed extension and alterations would improve the living accommodation
  - there would be no adverse impact on either the street scene nor the amenity of neighbouring properties.

Cllr Karl Gasson was not present at the meeting whilst this application was discussed.

#### **Next Scheduled Meetings:**

Monday 1<sup>st</sup> June 2015 at 7:30pm – Little Stukeley Village Hall, Little Stukeley  
Monday 6<sup>th</sup> July 2015 at 7:30pm – Great Stukeley Village Hall, Little Stukeley

Please check the website and notice board for notification of any  
Extra-ordinary Parish Council Meetings to be held.

Parish Councillors will be present at Open Surgeries at 7:15pm prior to Parish Council Meetings and parishioners are invited to attend to express their support, views or concerns on issues affecting the Parish. (Except on Monday 11<sup>th</sup> May due to the Annual Parish Meeting being held)

A full set of Minutes and other Parish Council information are available at

[www.thestukeleys-pc.gov.uk/](http://www.thestukeleys-pc.gov.uk/)

Carole Pollock, Parish Clerk/RFO to The Stukeleys Parish Council, 5 Gore Tree Road, Hemingford Grey,  
Cambs PE28 9BP.

Tel: 01480 464817 email: [clerk@thestukeleys-pc.gov.uk](mailto:clerk@thestukeleys-pc.gov.uk)

## **Contact Details Parish Councillors**

Stuart Bell	533142
Karl Gasson	413925
Philip Hobson	455629
Barrie James	434611
Michael Monk	456634
<b>Sue Parkin (Chairman)</b>	454085
Sally Smith	450356
Paul Vincent	411871
Stef van den Haak	07714 660865

## **Parish Clerk**

Carole Pollock 464817

Email: [clerk@thestukeleys-pc.gov.uk](mailto:clerk@thestukeleys-pc.gov.uk)

## **County Councillors:**

Sir Peter Brown 453062/411245

Peter Ashcroft 436669

## **District Councillor:**

Keith Baker 890782

## **Useful Websites and Telephone Numbers**

### **Fix My Street**

Fixmystreet.com allows anyone with an internet connection to report, view, or discuss local problems such as graffiti, fly tipping, broken paving slabs, potholes and much more.

By simply going to the website at [www.fixmystreet.com](http://www.fixmystreet.com) and entering a nearby UK postcode, or street name the system will display a map where anyone can pinpoint the area where there is an issue and give details of the problem.

The website sends a report to the appropriate council for action. Currently the website is recording and passing on about 4,000 local issues each month.

Fixmystreet.com is advertising that a new i-phone and android mobile phone app is also available to make reporting even easier.

### **Abandoned cars**

**01480 388297**

### **Fly tipping**

**01480 388640**

### **Pot holes in roads**

**0845 0455212**

[www.cambridgeshire.gov.uk/highwayfaults](http://www.cambridgeshire.gov.uk/highwayfaults)

### **Illegal signs/graffiti**

**0800 7832220**

### **Refuse and Recycling Helpline**

**0800 3896613**

## If someone collapses, follow these instructions

<b>D</b>		<b>DANGER</b>	<b>Ensure the scene is SAFE</b> For yourself and others. If it is not safe or you are uncertain call 999 and wait for help to arrive.
<b>R</b>		<b>RESPONSE</b>	<b>Check the casualty needs help</b> Check response by <b>TALK &amp; TOUCH</b> . Speak to the casualty in both ears, tap collar bones.
<b>S</b>		<b>SHOUT</b>	<b>SHOUT for HELP</b> If the casualty does not respond, <b>SHOUT</b> for help. Do not leave them at this stage. <b>Dial 999 now!</b>
<b>A</b>		<b>AIRWAY</b>	<b>Ensure the airway is OPEN &amp; CLEAR</b> Open the airway by tilting the casualty's chin and tilting their head back. Do not put your fingers in the casualty's mouth, you may push an obstruction further down.
<b>B</b>		<b>BREATHING</b>	<b>LOOK, LISTEN &amp; FEEL for normal breathing</b> Keep the head tilted back and listen for breathing. Look to see if the chest is moving. If the casualty is not breathing normally or you have any doubt, call 999.
<b>C</b>		<b>COMPRESSIONS</b>	<b>If not breathing normally start compressions</b> Place your hands in centre of the casualty's chest and press down hard. Just do compressions unless you feel confident to give breaths at rate 30:2. Press 2x per second.
<b>D</b>		<b>DEFIBRILLATION</b>	<b>Get someone to fetch a Defibrillator</b> Get your nearest community defibrillator, attach the electrodes (pads) and follow the audio instructions from the machine.

### ADDITIONAL COMPRESSION/BREATHING INFORMATION

- ♥ If you are unable or unwilling to give rescue breaths just do the compressions continuously.
- ♥ Give 30 compressions at a rate of 100-120 per minute and then give 2 breaths.
- ♥ Repeat 30 compressions and 2 breaths sequence.
- ♥ Continue until help arrives, you are too tired to continue, or the casualty starts breathing normally again.

<b>FOR AN ADULT</b>	<b>USE 2 HANDS &amp; COMPRESS 5-6 cm</b>
<b>FOR A CHILD</b>	<b>USE 1 HAND &amp; COMPRESS 1/3 CHEST DEPTH</b>
<b>FOR AN INFANT</b>	<b>USE 2 FINGERS &amp; COMPRESS 1/3 CHEST DEPTH</b>



Augmented reality – if you would like to see some videos on how to do chest compressions and how to use a defibrillator, use your smart phone to scan these QR codes.

Community  
Heartbeat  
Trust



CPR



Defibrillator







Corner of  
Great Stukeley Village Hall  
facing Owl End



Little Stukeley  
Brick bus shelter.  
North side Ermine Street

### **Community Defibrillator Seminar: 2nd May 2015 Great Stukeley Village Hall**

Twenty-five people from both Great and Little Stukeley attended the Stukeley Parish Council sponsored Community Defibrillator Seminar at the Great Stukeley Village Hall on Saturday 2nd May 2015.

The excellent two hour seminar by Martin Render, Chairman of the Community Heartbeat Trust, gave a comprehensive approach to the safe use of Automated External Defibrillators (AED's) by lay people and to the process to be followed when someone collapses including calling the Ambulance Service. Martin also provided a very useful refresher on how to apply cardiopulmonary resuscitation (CPR).

Coffee, tea and biscuits were kindly provided by the Great Stukeley Village Hall Committee with special thanks to Carol Buttercase, Mary Alleyne-James and Iain Shaw.

The useful chart facing this page with the seven steps that might save the life of someone you care about is also available:

- as a download from the Stukeley Parish Council's website [www.thestukeleys-pc.gov.uk](http://www.thestukeleys-pc.gov.uk)
- on the Stukeleys Parish Magazine website (look for June 2015 issue) [www.stukeleymag.co.uk](http://www.stukeleymag.co.uk)
- on the Parish notice boards
- as a hard copy from the Village Halls in both Great and Little Stukeley(while stocks last).

Given the interest shown in our Parish a further seminar will be held on a weekday evening in September 2015 at the Little Stukeley Village Hall. Details will follow.

**Councillor Barrie G James**  
Tel 01480 434 611



## **LITTLE STUKELEY VILLAGE HALL**

### **Horse Racing Evening.**

Although the number attending was less than we would have liked, the evening went with a swing and all had a good time. Some did well and some (like me) did not so well. All were very appreciative of the meal which was prepared by Gill Hossack on her own as Gloria was away – thank you once again Gill.

### **Annual General Meeting.**

The AGM for the Village Hall will be held on **Monday 8<sup>th</sup> June** in the hall; the meeting will start at 7.30 pm. Any resident of Little Stukeley will be most welcome at the meetings. It's your village hall and your Social Club, so do come along and help us by putting forward your ideas of the type of events you would like to see, or any improvements to the hall that you would like us to look at.

Don't forget we are looking for people from the village to join the committee, so anyone wishing to volunteer to join should get in touch with me or any member of the committee, before the AGM if possible.

### **Next Events – BBQ and Rounders – Sunday 12<sup>th</sup> July.**

The function will start at about 3:00pm, and the BBQ will start at about 5:00pm. If you do not feel energetic, come along and have a drink and enjoy the BBQ. Tickets will be £5.00 for adults and £3.00 children; **Ring or email Sally Smith (450356 or [sallysmith101@aol.com](mailto:sallysmith101@aol.com)) to book your places.**

### **Flower Show**

The Flower Show is on 5<sup>th</sup> September this year. More details will be in next month's magazine. Schedules for the Flower show should be on your doorsteps sometime in July.

**Keith Winter (01480-450656)**  
**(email: [keithwinter2@sky.com](mailto:keithwinter2@sky.com))**

## Letter to the Editor

Dear Sir,

I would like to ask you through the medium of the Stukeley Parish Magazine one question: What have they done with that loveable old curmudgeon that we have come to know as 'Bumblin Bob'?

Is he languishing, in the stocks on the village green? Or is he up for a public flogging in the car park of the PINK pub? Because, if he is, then could someone please enlighten me as to when the right to the freedom of speech was removed from us? Or, is it a concept yet to be discovered by the great and the good that sit on the committee of the parish magazine?! After all, our American brethren have it at No.1 in their constitution, so why has it bypassed us?

I do not live in your lovely little village, I be a foreigner from a far distant land called 'Godmanchester' so these blinkered people will not fall off of the edge of the world should they ever pluck up the courage and venture past the Stukeley roundabout! (There is life out there)

One day, I happened upon a copy of the magazine and my eye was immediately drawn to Bumblin Bob and his many and varied missives, and how delightfully un-pc he was! Just the breath of fresh air that is needed to get people to sit up and take notice of what is going on in their local community.

So, you may not always agree with him and his points of view, but at least he has the nuts to stand up and say them, not for him to sit, whingeing into his pint in one of his many watering holes, and doing absolutely nothing about it! I am sure your readership are capable of making up their own minds as to whether they agree or disagree with him. They do not need their noses wiping for them! So shutting him up and gagging him is achieving absolutely nothing, except showing up the narrow mindedness that, alas, often is conjoined with parish committees.

I, on a personal level, would prefer to read something like him rather than learning about how 'Mrs Fortescue-Cholmondeley-Warner –Brown –Smith has knitted the best pot of strawberry jam, again, for the 50<sup>th</sup> year running at the village show, or old Tom Cobley has had his prize plums tampered with in an act of sabotage at the village fete's best in show! And if you do not like reading him, then there is always this idea, it's quite simple really, it's called 'Turning the Page'.

The powers that be on your committee should hang their heads in shame for even thinking of gagging this jewel in your literary crown! It's tongue-in-cheek humour! Get over it! Let him be, but, if these said members really do find him too hot to handle, then maybe they should think of moving to a new position.

Village idiots perhaps?.....although I fear competition will be tough among them!

Kind Regards,

**Nicky Rice**

Godmanchester



**Ode to Bumbling Bob**  
**By Marion from Great Stukeley**

They seek him here, they seek him there,  
They seek that Bumbling Bob everywhere.  
Is he in the bikers, or the Pink Pub?  
Or is he at home having his grub?  
No, he's disappeared into the World Wide Web  
Where not all of us can see what's said.  
What happened to us we had free speech?  
All over the Country many do preach.  
No two people have the same views,  
Please let us enjoy Bob's missives and muse.  
Our Bumbling Bob should have his say,  
He brightens up our dull old day!

**Two Poems By Philip Hobson**

**Off the London Train**

Off the London train she came  
bobbing  
A little figure  
Usually the last  
Why would that be sweet?  
It was  
But dearest  
"Your hair looks nice "  
"It was my teeth "  
"Well they look nice as well "  
"And your hair looks nice "  
It was not my hair  
"Well you look nice "  
As she did  
Both her hair , teeth , and her  
How was I to know which to prefer  
They all looked good !  
I just met her off the London train!  
And knew she had been to dentist or  
hairdressers but not which!  
I just liked her - a lot!

**Quiet Entreaty**

Her eyes contained a quiet entreaty  
She did not want to seek my pity  
Just "Please can you comprehend my state  
For me it's getting yet more late  
To now I've put up my best fight  
But now they're turning out the light"  
She never did express defeat  
But eyes said, "Phil, they've got me beat"  
We fought it side by side together  
Both equally terrified for ever  
"Perceive my state" is what she meant  
I understood her true intent  
I'm sure I did both heart and mind  
In life and death both unified  
In spite of pain and sickness harm  
She kept her looks and endless charm  
My sole regret I could not better  
My endless thanks that I once met her.

Editor's note: We seem to have some Poets in the Stukeleys. If there is anyone else who feels they would like to try their hand, please send your poems to me for the next issue.



**...FROM THE SWINGING 60's Friday 20th November 2015**

Plans for our new event...*FROM THE SWINGING 60's* are now finalized and all the bookings confirmed.

On Friday 20th November 2015 doors will open at 7.00pm for a PROMPT 7.30pm start.

The CAVERNERS, a duo of brothers, will be performing LIVE without backing tracks...just their very own sound. Brothers Harry and Alan White have performed at numerous weddings, private parties and on some of the world's finest cruise liners for companies like Cunard, Holland America, P & O and Royal Caribbean.

Based in Essex and Suffolk the CAVERNERS travel the United Kingdom and internationally playing their special 60's Rock 'n Roll. Their LIVE programme includes music from The Beatles, The Hollies, Eddie Cochran, Elvis Presley and many more great artists.

Please reserve this evening to both have fun and to support your local Village Hall. Bring your friends and family and meet your Stukeley neighbours.

The price per person is £9.50. The Village Hall Committee have kept the cover price competitive to sell as many tickets as possible.

**Mary Alleyne-James**

Great Stukeley Village Hall Committee Tel 01480.433.954

# **Community Coffee Morning**

**Wednesday 24 June 2015**

**10.30 – 12.00**

**At Great Stukeley Village Hall**

**And every last Wednesday of the month**

**29 Jul, 26 Aug, 30 Sept, 28 Oct, 25 Nov**

**The Stukeleys WI are holding a community coffee morning every last Wednesday of the month to raise money for MAGPAS Air Ambulance and The Stukeleys WI.**

**Do come and join us. Children are welcome – we have a kids' corner to keep them amused.**



### VILLAGE LITTER PICK

Our thanks once again must go out to Col. John Pardo and his team of litter pickers from RAF Alconbury, they spent the morning of Sunday 26<sup>th</sup> April going round the Villages clearing up.

Although in general there is not much obvious litter they managed to collect several bags including the kitchen sink.

# Great Stukeley Flower, Garden and Craft Show 2015

Saturday 1<sup>st</sup> August

At

## Great Stukeley Village Hall

One major change this year is the cut off time for **booking in**, it will be from **9AM til 11:45AM** as doors shut at **12** prompt. So your cooperation in this slight change would be most appreciated.

Now calling on all you keen gardeners out there! We are seeking entries for **Best Kept Garden**, **Best Hanging Basket** and **Best Container**, which will be judged in **Mid-July**. So anyone interested in entering please don't hesitate in getting in touch. Contact myself on 07594382905 or Sylvia Reynolds on 01480 458442.

Note there was a slight error in the Somerset apple cake recipe so the following is the correct version. So please take note and keep it safe for the flower show.

75g/3oz butter, 175g/6oz caster sugar, grated zest of 1 orange,  
225g/8oz

self-raising flour, 2 eggs beaten, 2 tablespoons milk, 25g/1oz chopped candied peel, 1 tablespoon granulated sugar, 450g/1lb bramley cooking apples, peeled, cored and cubed

Grease & flour a 23cm/9inch loose bottomed cake tin. Cream butter, sugar and orange zest until light & creamy. Mix 1 tablespoon of flour with the apples in a dish. Add eggs & milk to the bowl of creamed mixture. Add remaining flour, candied peel and apples to the creamed mixture and

blend well with a metal spoon. Turn into a prepared tin and sprinkle with granulated sugar. Bake in a moderate oven, gas 4, 350 f, 180 c for 40 to 50 minutes until golden brown. Serve cold as a cake or hot as a pudding.

**Iain Shaw**

**Great Stukeley Flower Show Chairman**

## **The Stukeleys Heritage Group**

### **Next Meeting Wednesday 17th June**

*Our next meeting is Wednesday 17th June. Urban&Civic have kindly offered to host at their new "Incubator Building" - which is close to the main entrance with the slogan "Make|Grow" on it. We should aim to arrive there for 7.30pm. If anyone needs a lift, please contact me and I'm sure we will be able to arrange it.*

*Urban&Civic will provide refreshments, and you will be able to see the view of the site (and beyond) from the upper floors - and for those nimble enough, from the roof terrace (there is a lift to all other floors). There will also be the opportunity to hear at first hand the detailed plans for the site including its heritage.*

*Our last Group visit to Alconbury Airfield was on 29<sup>th</sup> October 2011. Back then, there had been very few changes to the airfield from its days as an operational airfield for the USAF; since then the changes have been rapid and dramatic with some demotion of unused buildings, hardstanding cleared and landscaped and new infrastructure put in for the development of the Enterprise Zone and the first phase of new housing.*

*I do hope you will be able to join us to see the changes in this important area of our Parish - and remember our meetings are open to all residents of The Stukeleys.*

### **Annual Outing Wednesday 21st October**

*This year our annual trip is to the Imperial War Museum at Southwark in London to view the First World War galleries. This was the choice of the Group, and fits in with our planned talk at the August meeting on the HUnts Cyclist Battalions.*

*Our coach will pick us up at Great Stukeley Village Hall at 9.30 am and we will leave London at 4 pm, so there will be plenty of time to see this important museum. There are cafes at the museum for you to purchase refreshments.*

*Entry to the museum is free, so the cost of this trip is just £20. Please let me know if you would like to join us. Cash or cheques payable to M.G. Monk, please in advance by 30th September at the latest.*

**Michael Monk, Convenor,**

33 Church Road, Great Stukeley. 456634 [michaelgmonk@hotmail.com](mailto:michaelgmonk@hotmail.com)



# Running For All!

## 1K Fun Run Chip-timed 3K



**Run for your School!**  
**1K and 3K trophies**

**Get Sponsorship - Raise funds**

Free Activ8lives activity trackers  
for first 100 school team entries



**Bring the family to our Spectator Village with refreshments, bouncy castle, stalls and activities**

**6th great year for the Hunts 10K**

**Take part and make it our best yet...**

- More runners
- More support for local charities

**We've raised over £50,000 for local charities,  
Help us to help them!**



# H10K

Huntingdon 10K Charitable Trust

Registered charity 1152384

# Hunts 10K Charity Run Sunday 21st June 2015

**H10K**  
Huntingdon 10K Charity Run

Sponsored by

Race Licensed by **UK Athletics**

**FUN**  
Huntingdon 3K Run  
Supporting  
Local Charities



10K & 3K runs, chip timed **PLUS 1K fun run**  
Alconbury Weald, Huntingdon PE28 4WX  
**Register at [hunts10k.org.uk](http://hunts10k.org.uk)**



**H10K** Huntingdon 10K  
Charitable Trust

Huntingdon Audi  
BRJ RUN AND TRI CLUB



Alconbury  
Weald  
Make|Grow

Dear Residents,

The sixth Huntingdon Charity 10k Race takes place on **Sunday June 21st** (Father's Day). We have 1,200 places for the 10k Race and 350 places in both the 3k race and the 1k Fun Run, so we expect to attract quite a crowd.

As in previous years your support, as local residents, is vital to the success of the event, which will be raising funds for charities supporting local people in Huntingdonshire.

The Huntingdon 10K Charitable Trust, a local fund raising group, is organising the race. As well as the races, there is again a covered 'Spectator Village', with food stalls, face painting, and many charity stalls, making it a great morning out for the whole family.

Alconbury Weald, formerly Alconbury Airfield, is once again the race venue by kind permission of Urban and Civic, who are not only hosting the event but helping us in many ways as one of our main sponsors.

The race has raised tens of thousands of pounds for local charities since 2010 and a number of local charities have been chosen by The Huntingdon 10K Charitable Trust to benefit from the profits of this year's event the main charity being The Marie Curie Nurses for the Terminally Ill. Five other charities will also benefit. Full details of these charities are on our website: [www.hunts10k.org.uk](http://www.hunts10k.org.uk)

**ROAD CLOSURES.** A section of the race is on roads in Great Stukeley, in particular Green End, Beech Avenue, Elm Road and Owl End. This year because of both the higher number of runners expected and for runner safety concerns over incidences in previous years, especially along Owl End, the Police and the County Highways Department has decided that these roads will be **CLOSED TO ALL TRAFFIC** except for emergency vehicles **between 10:00hrs and Noon**. We appreciate that this will cause some disruption to residents but the safety of the runners has to be paramount. Parking is available at the Great Stukeley Village Hall.

The runners will also appreciate cheering, clapping and encouragement from you as they pass your home! In previous years the support that local residents have given has been commented on by both runners and marshals.

If you want more information on the race route, further information and a detailed map are to be found at [www.hunts10k.org.uk](http://www.hunts10k.org.uk).

If you would like to join the 10K, 3K or 1K fun runners, it's not too late to enter at [www.hunts10k.org.uk](http://www.hunts10k.org.uk).

We would love to see as many local residents as possible supporting the runners and enjoying the attractions in the Spectator Village. There's plenty of free parking on site and it's free to visit and show your support.

If you have any questions please call me on 07887995867 or 01480 451412 (office) or email [racebob@hunts10k.org.uk](mailto:racebob@hunts10k.org.uk).

Warm regards,



Bob Hulström Race Director





3K kids



The 2014 10K Start

# **Great Stukeley Open Gardens**



**and St Bartholomew's Church  
Flower Festival**

**on**

**Sunday 5<sup>th</sup> July 2015**

**11am to 5pm**

**A variety of gardens from compact and  
immaculately kept to large with water features.  
Don't miss the opportunity of meeting the  
Alpacas on Green End.**

**Start at Great Stukeley Village  
Hall Owl End Great Stukeley  
PE28 4AQ**

**Tickets £4 each**

**Accompanied under 16s free**

# Ceilidh

Saturday 6th June 7 pm

at

Little Stukeley Village Hall

Hog Roast & Bar

Tickets £12.50 From Jocelyn Kerr Tel 01480 453213

Little Stukeley Village Hall

BARBEQUE & ROUNDERS

Sunday 12<sup>th</sup> July 2015 at 3:00pm

Tickets £5.00 for Adults (£3 for children under 12)

from Mrs Sally Smith Tel: 01480-450356

or email: [sallysmith101@aol.com](mailto:sallysmith101@aol.com)

Licensed Bar (including spirits)

## **THURSFORD'S CHRISTMAS SPECTACULAR 2015 *Sunday 15th November 2015***

The THURSFORD CHRISTMAS SPECTACULAR is the biggest and most exciting Christmas Show in Britain.

On Sunday 15th November 2015 with a prompt 2pm show start time we will all experience a popular blend of Christmas entertainment with dazzling dancers, beautiful costumes, Christmas songs and carols including outstanding music and singing from a cast of one hundred and thirty.

Each show is a pageant of spectacle and colour - the music, a seamless transition from an upbeat dance routine to a choral rendition of a Christmas Carol, to give a spectacular which would not be out of place in any of London's West End theatres.

I have been taking 50-strong groups to THURSFORD'S CHRISTMAS SPECTACULAR every year for over 10 years. These shows are so popular that I have had to increase my group size to 52 for the very first time.

The arrival of the performers is a big boost to the local economies of Fakenham and Holt as the artists stay in local accommodation and use facilities like bowling, the cinema, restaurants and shops.

Arriving in October and leaving in late December means that the performers do most of their Christmas shopping locally.

On the day of our visit we will be departing from the Great Stukeley Village Hall car park PROMPTLY at 10.00am.

The price for this years' show which includes your coach journey to and from Fakenham in Norfolk, a tip for the driver and your reserved seat is £52.00 per person.

**Mary Alleyne-James**

Tour Organizer Tel 01480 433 954

**Reflections: UNDER the BEARSKIN and THE ROYAL MEWS tour**  
**Tuesday 12th May 2015**

The 53 (fifty-three) strong group on my UNDER the BEARSKIN and THE ROYAL MEWS tour had a wonderfully Royal themed trip on Tuesday 12th May 2015.

Although our journey to London left on time we hit a lot of traffic which delayed our arrival to meet our Blue Badge Holder Guide, Martin Harvey, at the *Westminster Central Hall* by half an hour. After well-needed morning refreshments we strolled through an elegant slip of London and stood near to the *Royal Military Chapel* to view the return from guard duty of the *Royal Gurkha Rifles* and were treated to the music of the *Band of the Brigade of Gurkha's*.

Just before noon, to our complete surprise, *Prince Charles* and *Camilla's* car arrived at the *Royal Military Chapel* entrance followed five minutes later by *The Queen* and the *Duke of Edinburgh* who were attending a memorial service for the late *Duke of Wellington*. Our group waved like mad when *The Queen* passed by. *The Queen* looked straight at us and gave us a wonderful Royal wave making this the unexpected highlight of our day!

We lunched together at the *Mad Hatter Hotel and Pub* in Southwark before moving on to our tour of *THE ROYAL MEWS*.

We spent the afternoon at *The Royal Mews* viewing the stables, horses and the many official coaches and cars on show. The *Gold State Coach* used at *The Queens' Coronation* in 1953, weighing almost four tonnes, was extremely impressive. Eight horses are needed to draw this incredible coach which can never proceed at more than walking pace. The *Gold State Coach* was designed by William Chambers (1723-1796), is gilded all over and has exterior panels by the Florentine painter and engraver Giovanni Battista Cipriani (1727-1785).

On our way back to Great Stukeley we encountered a large amount of traffic leaving London and arrived back a little later than planned at 7.50pm.

Our thanks are extended to Martin Harvey our extremely knowledgeable guide and to our very experienced driver, Nick Unwin.

Our trip started off with rain in Great Stukeley followed by sunshine and clear blue skies throughout our stay in the capital. We saw *The Queen* and members of the Royal Family and even experienced a mini-fashion show as guests were lining-up outside *Buckingham Palace* for a *Garden Party* when we arrived at the adjacent *Royal Mews*. A nice lunch and informative visits to the Guard parade and the *Royal Mews*...what more could you want?

**Mary Alleyne-James**  
Tour Organiser  
Tel: 01480 433 954

## **The BRICK LANE MUSIC HALL - Tuesday 8th December 2015**

The lunch theatre at Silvertown's historic BRICK LANE MUSIC HALL offers *old-style* entertainment accompanied by a three course meal. It is one of the few places in the country where you can experience a variety show-and-lunch entertainment popular in the mid 19th century.

The Brick Lane Music Hall has received worldwide acclaim and attracts audiences from all over the country to its home in London's Docklands. Named after its original home in Brick Lane, the Music Hall is very proud of its East London heritage and plays an active role in the life of the Borough of Newham.

On *Tuesday 8th December 2015* we will meet at the Great Stukeley Village Hall at 09.45am for a PROMPT 10.00am departure by our Kiddles Coach.

Admission to the BRICK LANE MUSIC HALL is planned for 12.15pm. Audiences are seated at tables, cabaret-style. I will give you your table number on the coach.

PAYMENT DUE: PLEASE NOTE that FULL PAYMENT of £58.50 per person (includes your three-course Festive Lunch, the really superb show, your return coach journey and a tip for our driver) in CASH ONLY for this terrific Christmas show MUST BE RECEIVED by me personally NO LATER THAN 5PM on THURSDAY 4th JUNE 2015.

Please be THOUGHTFUL and call me first to arrange a mutually convenient time to drop-off your payment at my home.

**Mary Alleyne-James**  
Organiser Tel 01480 433 954

## **OXFORD and the ISIS and IFFLEY Cruise - Tuesday 15th September 2015**

The famous *KINGS ARMS* 'is the oldest pub in Oxford. Built in 1607 and still standing in its original position. It is also claimed to be the *brainiest* pub in Oxford, known for having the highest IQ per square foot of anywhere in the world!.

Loved by Oxford scholars and tourists alike and renowned for having the finest cask ales, hearty homemade food and even a resident ghost! The *KINGS ARMS*' is situated in the heart of Oxford's City Centre, directly opposite the *New Bodleian Library* on the corner of Broad Street, Holywell Street and Parks Road.

The pub is owned by *Wadham College* located just to the north of the site. This site was originally occupied by buildings erected by Augustinian friars in 1268. After the dissolution of the monasteries in 1540 the land passed to the City of Oxford.

In the 17th Century the *KINGS ARMS*' was a very popular location for plays. In the early 18th century the south side and the rear were rebuilt and the west frontage was added in the late 18th century. The *KINGS ARMS*' was variously a coaching inn (by 1771) and later an hotel.

We will stop at the *KINGS ARMS*' on Tuesday 15th September 2015 for morning refreshments, INCLUDED IN THE TOUR PRICE, on our arrival in Oxford.

PAYMENT DUE: PLEASE NOTE that FULL PAYMENT of £39.50 per person in CASH ONLY for this wonderful day of tours MUST BE RECEIVED by me personally NO LATER THAN 5PM on THURSDAY 4th JUNE 2015.

Please be THOUGHTFUL and call me first to arrange a mutually convenient time to drop-off your payment at my home.

**Mary Alleyne-James**  
Tour Organiser Tel 01480 433 954



**THE STUKELEYS WI**  
**Meeting held on Wednesday 13<sup>th</sup> May 2015**

The President, Nicki Sly, welcomed 26 members to the meeting. 3 apologies for absence were received. Nicki thanked Janet Talbot for the Curtis Bowl and Jenny Thilo for the draw prize and Sue Clarke, Kath Deighton and Nita Charter for the refreshments. We sang Jerusalem.

The minutes for the April meeting were read out and subject to one amendment, it was agreed that they were accurate and that Nicki should sign them.

Matters arising: Nicki has been in touch with Sean Moyses, the Banjo Man and she proposed we book him for our Christmas entertainment next year and members voted unanimously in favour. Various boards were sent round including the Federation Centenary Picnic (family welcome) on Sunday 12<sup>th</sup> July and Old Hunstanton Flower Festival Friday 31<sup>st</sup> July and Subjects of interest for speakers. Jude Wood and Ann Render were looking at some National Gardens to see if they were appropriate for our summer outing. Members were asked to consider whether they wanted an outing for the whole day, or just an afternoon.

Correspondence : Langley WI are holding a Centenary Strawberry Tea on 17<sup>th</sup> June at 2.30-4.30pm at the Pavilion, Hemingford Grey £5.00 – all profits to the Woodlands Centre. The Isle of Ely Federation of WIs has invited us for an Inter-Federation Walk of Ely on Tuesday 7<sup>th</sup> July starting at 11am. Tickets are £14 include a guided walk and lunch. Centenary Raffle tickets are available. A vote was taken on the Resolution for this year's NFWI AM "Failing to care – assessment of need in long-term care. This meeting calls on HM government to remove the distinction between nursing care and personal care in the assessment of the needs of individuals, in order to advance health and wellbeing." Members voted unanimously in favour of the Resolution. St Bartholomew's have asked if we would like to take part in the Flower Festival taking place on 5<sup>th</sup> July in conjunction with Great Stukeley Open Gardens. We have been asked to create a simple floral arrangement and display showing examples of what we do as an organisation. Nicki and Sarah agreed to do it. The Parish Council asked us to attend the Annual Parish Meeting on 11<sup>th</sup> May at Great Stukeley Village Hall to give a report on The Stukeleys WI. Nicki attended the meeting and gave a report.

Deanna Strange gave the Financial Statement.

Forthcoming events: Community Coffee Morning on 27<sup>th</sup> May, Great Stukeley Open Gardens and St Bartholomew's Flower Festival on Sunday 5<sup>th</sup> July 11am-5pm, Centenary Picnic on Sunday 12<sup>th</sup> July, CPSO Concert on Saturday 13<sup>th</sup> June 7.30pm at the Voyager Concert Hall Peterborough, Hunts Phil on 5<sup>th</sup> July. Nicki then introduced Ms Sallie Crawley who gave an interesting talk on Hypnotherapy and how to deal with stress and anxiety, including a guided relaxation session. Nicki gave the vote of thanks.

Any Other Business: Deanna proposed that we invite MAGPAS to give us a talk on what they do as they are our chosen charity this year. We could present them with the money we have raised through the coffee mornings. Members voted unanimously in favour of booking MAGPAS. Sarah proposed we have an Open Meeting to raise funds for the WI and a discussion followed regarding the speaker. Members voted unanimously in favour. Sarah also told members about the Community Defibrillator which has been installed on the outside of the village hall by the Parish Council and gave a brief summary of the Defibrillator seminar on 2<sup>nd</sup> May. Sheila Stephenson read out her story in the style of Charles Dickens from one of the competitions last year.

The competition was an item with a farm animal on it for which there were 17 entries. 1<sup>st</sup> prize: Sarah Toyn 2<sup>nd</sup> prize: Maureen Sewell 3<sup>rd</sup> prize: Margaret Helme. The draw prize was won by Maureen Sewell.

The next meeting is on **10<sup>th</sup> June 2015 at 7.30pm**. "Knit and Natter" – a chance for members to share skills. Curtis Bowl: Margaret Helme and Draw: Kath Deighton. Competition: A woollen item (all your own work). Roll call: preferred craft/hobby.

**Sarah Toyn**

**ngs** gardens open  
for charity

---

# Garden Open

# Wytchwood

7 Owl End

Great Stukeley

Huntingdon PE28 4AQ

# Sun 21 June

# 1.30 - 5.30pm

Adm: £3.50

Children: free

Plants for Sale





**Save up to 75%:**

- High/complex prescription
- Premium frames & lenses
- Reglaze your own specs\*
- Specs for all sports & trades

(Complete frame & lenses)

- Single vision specs from just £9\*
- Bifocals specs from £39\*
- Varifocal specs from £59\*
- Prescription sunspecs from £49.00\*

- Excellent customer service
- FREE specs for NHS vouchers\*
- Large selection of specs frames
- Specs repairs & emergency supply\*

\*T & C's apply, please ring for details. For customers aged 16 and over only.

**Need glasses?**

Buy direct save ££



Shop local, pay internet prices:

**ALL EYES Specs Makers**

20 Norman Way Ind. Park,  
Over, Cambridge CB24 5QE  
Mon - Fri (9.00am - 5.00pm)

Tel: 01954 231545 Mobile: 07824 706969

Website: [www.all-eyes.co.uk](http://www.all-eyes.co.uk)

**(PLEASE RING FOR AN APPOINTMENT)**

**M&D FLOORING**

A Family Run Business

- CHOOSE SAMPLES IN THE COMFORT OF YOUR OWN HOME
- ALL FLOORING SUPPLIED AND FITTED AT COMPETITIVE PRICES
- DOMESTIC AND COMMERCIAL INSTALLATIONS
- UPLIFT AND DISPOSAL OF OLD FLOORING
- FURNITURE MOVING SERVICE AVAILABLE

- CARPETS
- VINYLs
- LAMINATES
- SOLID WOOD FLOORING
- LUXURY VINYL TILING
- ENGINEERED WOOD FLOORING

To make an appointment please call

Matt Silsby Mob: 07871 277244  
Eve: 01487 812825

Visit us at [www.M&Dflooring.co.uk](http://www.M&Dflooring.co.uk)  
Email: [info@M&Dflooring.co.uk](mailto:info@M&Dflooring.co.uk)





TRANSFORM  
YOUR CURRENT  
**COOKER**  
IN AS LITTLE AS  
**2 HOURS**

FREE  
Replacement  
Bulbs  
Service

"Better Than New"

"Absolutely Thrilled"

Easy  
CALL, QUOTE  
& BOOK

"Fantastic Service"

"Clean & Shiny"

OvenGleamers  
SATISFACTION  
GUARANTEE  
SINCE 2004

"Definitely Use You Again" "You Certainly Live Up To Your Name" "Cleaner Than When First Bought"  
Just a few of the wonderful comments that our clients have said recently.

Our OvenGleamer will come into your home and professionally degrease and remove any burnt on carbonised food from your Oven, Cooker, AGA or Range. Would you like an "as new-looking" cooker again?



Call us NOW **01223 750909**

## ADVERTISE IN YOUR PARISH MAGAZINE

Why not advertise your business in  
The Stukeleys Parish Magazine?

The rates are very reasonable, especially the yearly rate,  
And the magazine is distributed to around 500 household so  
you could probably get the cost back on the first job!

## A. DYOS LTD

Multi Trade Handyman Services  
Family Run Business Established Over 25 Years

All Building Trades Covered

Carpentry, Plumbing, Plastering, Decorating etc.

No Job Too Small, Free Estimates & Advice

Tel: 01480 450107 / Fax

Mob: 07958 493555 / 07985 634569

Email: [dyos3@hotmail.com](mailto:dyos3@hotmail.com)



# STUKELEY'S COUNTRY HOTEL

Telephone 01480 456927

## SENIOR CITIZENS DINNERS

Monday and Tuesday Lunchtimes and Monday Evenings

**TWO COURSES £6.95**

**SATURDAYS GRILL SPECIAL:** from £15.95

Choose from: Steak, Mixed Grill or Gammon Steak, choose a starter or dessert FREE

**SUNDAY ROAST:** from £8.25

**BREAKFAST:** every morning £5.95

**£5 OFF**

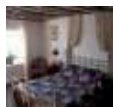
**A MEAL FOR TWO AT STUKELEY'S HOTEL**

Complete your details and present this voucher  
(USE FOR MAIN MEALS ONLY)

Name:.....

Address:.....

This voucher is not valid on Saturday Specials, Sunday Roasts  
, Senior Citizens or any special promotions  
Valid until June 30<sup>th</sup> 2015



**Step**

**by**

**Step**

*...we'll lead the way...*

## Ballroom & Latin American Dance Classes

**Adults :** Monday evenings : Bluntisham Village Hall

Thursday evenings : Alconbury Memorial Hall

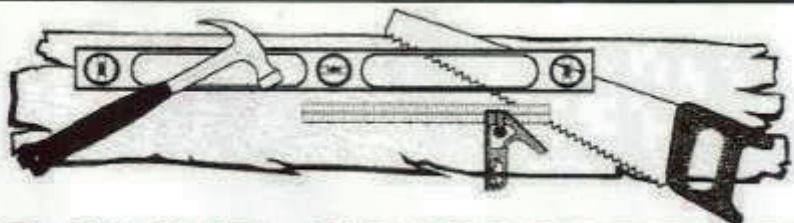
Friday evenings : Houghton & Wyton Memorial Hall

\*\*\*\*\*

**Children :** Sunday afternoons : Houghton & Wyton Memorial Hall

For further information please  
email [enquiries@stepbystepballroom.co.uk](mailto:enquiries@stepbystepballroom.co.uk)  
or telephone 07876 130037  
[www.stepbystepballroom.co.uk](http://www.stepbystepballroom.co.uk)





# DAVID HUMPHREY

Carpenter & Joiner

21 Lake Way, Stukeley Meadows, Huntingdon, Cambs PE29 6SU

VAT Registration No 759 633 89

Small works  
Fitted kitchens  
Loft conversions  
Windows & Doors  
General property repairs

Call today for a free quotation.

Tel: 01480 432275 Mob: 07788 428580 Fax: 01480 451566

## The UK's No.1 Lawn Care Company



- Scarification
- Aeration
- Lawn Fertilising
- Weed Control
- Moss Control
- Water Conserver
- Pest and Disease Management



GreenThumb has a variety of treatment programmes to suit your pocket that include our traditional 'pay-as-you-go' service and our new, pay monthly, Direct Debit programmes, where you can save up to 25% annually.

Our treatments start from £5 per month, that's cheaper than D-I-Y and without the hassle!

Call your local branch today for a FREE lawn analysis and no obligation quote.

0800 0111 222

**GreenThumb**  
LAWN TREATMENT SERVICE



Find us online at: [www.greenthumb.co.uk](http://www.greenthumb.co.uk)

## Yoga with Jane

Hatha Yoga for mixed ability

Thursday evenings 7.15-8.45 pm  
Little Stukeley Village Hall

Tuesday evenings 7.30-9.00 pm  
Brampton Primary School

Ongoing courses – book today!  
£35 for a block of 5 sessions



Relax, Stretch, Strengthen

Become flexible and mindful

Contact Jane on 07958 757076 for  
details and to book  
[jane.clark@virgin.net](mailto:jane.clark@virgin.net)  
[www.yogawithjane.co.uk](http://www.yogawithjane.co.uk)

YOUR  
STUKELEYS PARISH MAGAZINE  
NEEDS



Contributions of all sorts needed.  
Send in anything you feel may be of interest  
such as stories, photographs, poems or  
suggestions.

Anything will be considered.

Please send to  
[martyn@stukeleymag.co.uk](mailto:martyn@stukeleymag.co.uk) Or  
Drop in to me at  
7 Hill Close, Great Stukeley

# AGC SERVICES



Provides:

**Boiler Servicing & Installation**

**Help if you have Central Heating Problems**

**Electrical Installation & Fault Finding**

**Fully Gas Safe Registered & Corgi Electrical Registered**

**Domestic and Commercial**



**For Friendly Advice on Heating, Gas and Electrical Problems**

**Call Nino on:**

**01480 412483 or 07786 437126**

**Or Email [augustingaetano@talktalk.net](mailto:augustingaetano@talktalk.net)**

**THE CHURCH OF  
JESUS CHRIST OF LATTER DAY SAINTS.  
ERMINE STREET, GREAT STUKELEY,  
NEXT TO THE VILLAGE HALL.**

**Bishop Matthew Wade**

---

**Sunday Services**

10.00am to 11.15am Sacrament Meeting

11.15am to 12 noon Sunday School Classes for 12 years old and over.

11.15am to 1pm Primary For under 12 year olds, and Nursery for 18 month old to 3 years old.

12 Noon to 1pm Relief Society Meeting for Sisters 18 years and over(Women)

12 Noon to 1pm Priesthood Meeting for Brothers 18 years and over(Men)

12 Noon to 1pm Young Men and Young Women Classes for 12 to 18 year olds.

**All are welcome to come and join us.**

**Weekday Meetings**

Every Tuesday:

Youth Meetings for 12 to 18 year olds from 7.30pm to 8.30pm

First Wednesday of each month:

Sisters Meeting from 7.30pm to 9pm





# GRACE FELLOWSHIP



**An International English Speaking Baptist Church for Everybody**

**Love God: Love People: Care for the World**

*'For God so loved the world that He gave His only begotten Son.'* John 3 : 16

Why not come and join us? A warm welcome always awaits you. All of our meetings are open to you.

Every Sunday	9.45 am	All Age Bible Study
	11.00 am	Worship Service
	3.00 pm	Afternoon Worship at Great Gidding Baptist Church
Every Wednesday	7.00 pm	Prayer Meeting
Saturday 13 <sup>th</sup> June	9.00 am	Men's Breakfast. All men welcome, come and bring a friend or two ....
<b>Saturday 20<sup>th</sup> June</b>	<b>12.00 noon</b>	<b>Village BBQ. Why not join us for this open community BBQ. All Welcome</b>

If there is any way in which we can help or any questions you need to ask please call Pete and Penny Bourne on 01480 432207 or 07887707940 / 07908093224 or email us at

[bourneagain38jer333di@gmail.com](mailto:bourneagain38jer333di@gmail.com) or [pennyanne.bourne@gmail.com](mailto:pennyanne.bourne@gmail.com)

or phone David Stokes on 01480 891023 and we will do our very best to help. If you need help with transport to any of the meetings just call Pastor Pete or Penny as above.

## The Way Station

As you pass Grace Fellowship you can see a wooden shelter like structure. This is part of The Vision given to Steve And Gill Eggleton to set a trail of Church way stations from the east coast to the west coast at the widest point (as near as they can). A trust was set up to start this off, and there are already a fair number in place. We are the latest one with others in the planning stage for Wales. The line will run from Felixstowe in the East to St David's in the West linking Churches across England and Wales. Some Baptist, some C of E and other Christian Churches. Giving travellers a place to rest and spend a few moments in thought, maybe to pray for loved ones or just to eat their sandwich. If you have a few moments to spare pop along and have a look at the carving on the back wall well worth a moment of your time.

It's all over, the Election settled for another 5 years. Some will be pleased with the outcome, others disappointed, but we should be glad that we had a chance to vote for the person or government to lead us over the next 5 years. Please stop and spare a thought for those that risk their lives trying to flee from war torn lands, and a government they cannot change. Please pray for those who lose their lives for their faith in Christ Jesus. We can go to Church without fear of being killed or put in prison, yet many do not go to any church. Today we take it for granted that there will always be a church to go to when we need it. But who will keep our churches open if we all stop going? Will we always have the freedom to attend a service, a place to spend a few moments to find peace in a time of stress? Before we turn our backs on God look at those that we see on TV risking their lives to find the freedom we enjoy today because men and women gave their lives in the 2 world wars for our freedom.

**Pastor Pete**

## CHURCH SERVICES



**ST BARTHOLOMEW'S  
GREAT STUKELEY**



**ST MARTIN'S  
LITTLE**

### June

7th First Sunday after Trinity	<b>9.00 am</b> Celebrant	Holy Communion CW Rev'd Andrew Milton		<b>No Service</b>
14th Second Sunday after Trinity	8.00 am Celebrant	Holy Communion CW Rev'd Andrew Milton		<b>No Service</b>
	<b>9.00 am</b> Leader	Family Service Richard Turpin		
21st Third Sunday Milton after Trinity	<b>9.00 am</b> Celebrant	Holy Communion CW Rev'd Andrew Milton	8.00 am Celebrant	Holy Communion Rev'd Andrew
28th Fourth Sunday Milton after Trinity	<b>9.00 am</b> Leader	Morning Prayer Alan McGoff	9.00 am Celebrant	Holy Communion Rev'd Andrew

### July

5th Fifth Sunday after Trinity	<b>9.00 am</b> Celebrant	Holy Communion CW Rev'd Andrew Milton		<b>No Service</b>
--------------------------------------	-----------------------------	--	--	-------------------

### WHO'S WHO IN THE CHURCHES

Churchwardens	Richard Turpin Montagu House 1 Church Walk Great Stukeley	Sue Pond Church Way Little Stukeley
	Harry Raby Brookfield Farm Great Stukeley	Camilla Payne Old Rectory, Church Way Little Stukeley
Secretary of the Parochial Church Council	Alan McGoff 4 Seathwaite Stukeley Meadows Huntingdon	Camilla Payne Old Rectory, Church Way Little Stukeley
Vice Chairman of the Parochial Church Council	Richard Turpin Montagu House Church Walk Great Stukeley Tel: (01480) 456476 Fax: 07092 365508	Jocelyn Kerr 2 Mill Close Little Stukeley Tel: (01480) 453213
Rector	Revd Andrew Milton	

# Independent Financial Advice

01480 451 412

[www.huntsifa.co.uk](http://www.huntsifa.co.uk)



- **Is this how you feel when faced with a financial decision?**
- **One which you do not really have the skill or knowledge to decide upon?**

**We specialise in helping people aged 60 plus make the right decision in the following areas;**

- **Equity Release**
- **Impaired Annuities**
- **Pension Transfers**
- **Long Term Care**

**Don't leave one of the most important decisions of your life to luck; speak to the specialist  
NOT**

**'Dom down the Pub' or 'Beryl-Ann in the Hairdressers'!**

**We have 21 years experience and 1,000's of satisfied clients**

**Ring us on  
01480 451 412  
for a free interview  
to discuss your needs.**



**positivesolutions** <sup>®</sup>

altogether **individual**

**3 Royal Oak Passage High Street Huntingdon Cambs PE29 3EA 01480 451 412**



"If you want the best from yourself, invest in yourself!"

**Relaxation, Wellbeing**  
Injury Prevention & Rehab

**Relieve: Pain, Muscle Tension,**  
**Headaches, Stress, Repetitive Strains**

Improve: Flexibility, Back Stiffness,  
Circulation, Performance



Treatments  
for:  
Individuals  
Sports Clubs  
Corporate



Locally Based & Mobile

[Zestsportsandspa.com](http://Zestsportsandspa.com)

Contact Clare 07738 424079



Going to the  
**airport?**

Take the stress out of getting  
there with an executive chauffeur  
driven car you can rely on to be  
**on time, every time**

- 24 hour Duty Manager
- Live flight monitoring
- Complimentary travel packs
- E-mail and text confirmations

Call **01480 890200** or visit  
[www.flexecars.co.uk](http://www.flexecars.co.uk)

FlexEcars is part of the Flex-Able Group,  
30 Edison Road, St Ives, PE27 3LF. Est. 1994

## Your Local Printer

- Business Cards
- Leaflets
- Flyers
- Forms
- Booklets
- Tickets
- And so much more...

**NOW  
PRINTING  
CLOTHING**

[www.easiprint.biz](http://www.easiprint.biz)  
**01480 718270**

**FREE DELIVERY**

**easiprint**

23 Levellers Lane Ind Est, Eynesbury, St Neots, Cambs, PE19 2JL

**R&R**  
DECORATING  
OF SAWTRY

Shortly to change name to:  
**Alconbury & Weald Decorating Services**

**A Local Qualified Decorator**  
**Reasonable Rates - Reliable**

**Insurance Work undertaken - Internal & External Decorating**  
**Painting - Wallpapering - Coving - Property Maintenance - Roof**  
**Maintenance - Gutters also cleaned, repaired or replaced**

**Local References on request**

**Give Rob a call on 07971 337581 or 01480 891961**

**Or email: [r.bates01@btinternet.com](mailto:r.bates01@btinternet.com)**

