



Including **Alconbury Weald**

DECEMBER 2020



**Terry Pinner
Chairman
of the Parish Council
Laying the Wreath
at the Silent Soldier
in Great Stukeley**



**Tim Close
Vice Chairman
of the Parish Council
Laying the Wreath
at the Silent Soldier
in Little Stukeley**

Let us transform the quality of your lawn!



Aeration
Scarification
Overseeding
& More



- ✓ Greens up and thickens the lawn
- ✓ Removes weeds and minimises moss
- ✓ Completely safe for children and pets
- ✓ Locally owned and operated business
- ✓ Regular personalised treatments
- ✓ No contract - Direct Debit available



 **Greensleeves**
Lawn Treatment Experts

FREE Lawn Analysis: 01767 651 639

www.greensleeves-uk.com • Email: hunts@greensleeves-uk.com

January 2021 Magazine Cut-off Date

Cut-off date for the January 2021 Stukeleys Parish Magazine is

9am Monday 14th December 2020

****** Please do not be late ******

FUTURE EVENTS

Mon 7 th Dec	7.15pm	Parish Council Meeting	Via ZOOM
Sun Dec 13 th	All day	Food Bank Collection	St Martin's
Sun Dec 13 th	9.30am	Holy Communion	St Martin's
Mon Dec 14 th	9.00am	Cut-off date for the January Stukeleys Parish Magazine	

Take a look at the Magazine website at www.stukeleymag.co.uk

Email to: Martyn at martyn@stukeleymag.co.uk

Post/drop in to: 7 Hill Close, Great Stukeley PE28 4AZ

Tel: 01480 432633 Mob: 07710 171924

Please include your phone number in case of queries.

Space in the magazine is limited, so articles should be about 300 words. This is to allow as many people as possible the opportunity to contribute to the magazine.

It would be helpful if you could submit articles sized to an A5 page in Word or PDF.

We reserve the right to refuse an article, cut its length or hold it over to a later issue without notice.

Please Note: This magazine is published by Martyn Fox with administrative and financial support from The Stukeleys' Parish Council. The opinions expressed Are not necessarily those of the Editor or of the Parish Council

A charge is made to advertise in this magazine. All enquiries should be directed to Martyn Fox (Tel: 01480 432633) or Ramune Mimiene, (Parish Clerk) Email: clerk@thestukeleys-pc.gov.uk

This Month

Page 4:	Stukeleys Parish Council Report
Page 5:	Changes to Flight patterns for Luton & Stanstead
Page 6:	Thank you to all Magazine Deliverers
Page 7 & 27:	The NHS is here to help you stay well this winter
Pages 8-9:	St Martins Food Bank Collection
Pages 10-13:	Stukeleys Heritage Group
Pages 16-18:	Update from Alconbury Weald
Pages 20-21:	Alconbury Community Preschool

WANTED

Items for the Magazine. All things considered.
Quizzes, Local Photos, Reviews, Reports on Local Events, Birthdays Etc.

**The Cut-off Date for the
January 2021 Stukeleys Parish Magazine is
9am Monday 14th December**

Merry Christmas and Happy New Year

With best wishes from

Martyn Fox

Editor

November Stukeleys Parish Council Report

The November Stukeleys Parish Council meeting was held via ZOOM.

There has been some progress on the road improvements through the villages, Cambridge County Council have now approved all detailed works as planned, which means SPC can now get a final costing for completing the planned alterations from speed cushions to tabletop humps at agreed points.

Urban & Civic have agreed to cover the costs for the supply and installation of new village signage (including Glasson Gateway style signs for both Little and Great Stukeley), as these were part of the agreed safety audit review, they could be installed by Christmas.

Two outdoor table tennis tables have been delivered and are safely stored until they can be put in place when weather conditions allow, the Pocket Park project is moving forward, making a planning application and getting quotes for groundworks will be the next step.

The SPC has been asked if they wished to join the Cambridgeshire County Council Biodiversity Team as they try to develop a strategy for sustainably management of the road verge network in Cambridgeshire. As part of Cambridgeshire County Councils Climate Change and Environmental Strategy Action Plan, they are working towards a highways management approach that delivers environment net gains, this includes ensuring biodiverse verges and all wildlife sites are in positive conservation management. The Chairman has agreed to liaise with CCC.

Until further notice SPC meetings will continue to be held via ZOOM, anyone wishing to attend please contact clerk@thestukeleys-pc.gov.uk date of next meeting is Monday 7th of December at 7.15pm

Changes to Flight patterns for aircraft from Luton and Stanstead.

London Luton Airport [LLA] has co-sponsored an Airspace Change Proposal and a consultation process is in full swing. Individual consultation responses must be submitted by 5th February 2021, and Parish Councils must provide feedback to Huntingdonshire District Council on proposals by 15th December 2019.

In short, LLAs Consultation Document describes rerouting flights.

Here is a link to the overview:

https://consultations.airspacechange.co.uk/london-luton-airport/ad6_luton_arrivals/

It looks like the new holding stack stretches roughly from St Neots around to Kimbolton, up to Buckworth and Alconbury and back down the A1. The effect of this proposal is directly above 38 of our neighbouring villages and towns impacting approximately 50,000 people.

LLA propose an average of 7 to 9 planes an hour, with peaks of 12 to 13 planes an hour at 7am in the morning, midday, and from 5pm to 11pm at night!!

This is the table LLA presents to illustrate the average number of arrivals per hour of the day (from 0001 to 2359), for the year 2019.

Local Time	0	1	2	3	4	5	6	7	8	9	10	11	12	13	14	15	16	17	18	19	20	21	22	23
Avg 2019	5	5	2	1	1	0	2	13	7	6	7	9	13	12	10	9	11	13	12	11	11	12	12	9

The point of the LLA plan is to increase capacity, 19 million passengers at first and in 10 years potentially doubling that.

This proposal does not have to go ahead, to complete the Consultation Feedback Proforma and to have your say see the link to the Proforma feedback form

https://consultations.airspacechange.co.uk/london-luton-airport/ad6_luton_arrivals/consultation/intro/

There is also a working group Against Luton Airport Stack detailed below;
www.AgainstLutonAirportStack.co.uk

FACEBOOK <https://www.facebook.com/Against-Luton-Airport-Stack-100706685199994/>

A SEASONAL "THANK YOU" TO ALL OF OUR STUKELEYS PARISH MAGAZINE DELIVERERS.

Mary Alleyne-James and I would like to thank all our monthly Stukeleys Parish Magazine deliverers for their much appreciated hard work in ensuring that you receive the Magazine every month of the year sun, rain or snow. Many thanks also to Natalie Leigh-Brown who arranged the delivery of the Magazine to Alconbury Weald.

Without our volunteers in both Great and Little Stukeley and Alconbury Weald we would not have the pleasure of keeping up with each other's news and learning about our local services. Without them it would not be the same living in the Stukeleys and Alconbury Weald Parish.

MERRY CHRISTMAS and HAPPY NEW YEAR to our deliverers and everyone in the Parish.

Martyn Fox
Editor

Mary Alleyne-James
Delivery Co-ordinator

Christmas by John Betjeman

1. The bells of waiting Advent ring,
The Tortoise stove is lit again
And lamp-oil light across the night
Has caught the streaks of winter rain
In many a stained-glass window sheen
From Crimson Lake to Hookers Green.

3. Provincial Public Houses blaze,
Corporation tramcars clang,
On lighted tenements I gaze,
Where paper decorations hang,
And bunting in the red Town Hall
Says 'Merry Christmas to you all'.

5. And girls in slacks remember Dad,
And oafish louts remember Mum,
And sleepless children's hearts are glad.
And Christmas-morning bells say 'Come!'
Even to shining ones who dwell
Safe in the Dorchester Hotel.

7. And is it true? For if it is,
No loving fingers tying strings
Around those tissueed fripperies,
The sweet and silly Christmas things,
Bath salts and inexpensive scent
And hideous tie so kindly meant,

2. The holly in the windy hedge
And round the Manor House the yew
Will soon be stripped to deck the ledge,
The altar, font and arch and pew,
So that the villagers can say
'The church looks nice' on Christmas Day.

4. And London shops on Christmas Eve
Are strung with silver bells and flowers
As hurrying clerks the City leave
To pigeon-haunted classic towers,
And marbled clouds go scudding by
The many-steepled London sky.

6. And is it true? And is it true,
This most tremendous tale of all,
Seen in a stained-glass window's hue,
A Baby in an ox's stall ?
The Maker of the stars and sea
Become a Child on earth for me ?

8. No love that in a family dwells,
No carolling in frosty air,
Nor all the steeple-shaking bells
Can with this single Truth compare -
That God was man in Palestine
And lives today in Bread and Wine.



We're here to help you stay well this winter

This winter, it's really important that we all remember that the NHS is here to help you stay well, safely.

We have been working hard to make changes to how healthcare is provided to make it safe for you during the ongoing coronavirus (COVID-19) pandemic.

If you're worried about your health, don't delay. The sooner you get advice, the better.

Depending on your symptoms, you can get advice from your local pharmacy, GP practice or NHS 111. For minor health concerns, your local pharmacist can help. GP practices offer remote consultations online or by phone, or if you need a face-to-face appointment, they will tell you what to do.

If you need medical help fast, think you need to go to an Emergency Department (A&E) or you're not sure what to do, use NHS 111 first – online or by phone to get clinical advice or direction to the most appropriate services for treatment for you.

You can also help us to help you. If you are over 65, have a long-term health condition or are pregnant, it is more important than ever this year to ensure you have your free flu vaccination. Just speak to your GP or pharmacist to book an appointment. You can also find more information at www.nhs.uk/flu vaccine

Be sure to also stock up your medicine cabinet with winter self-care essentials too. Many over-the-counter medicines (including paracetamol and ibuprofen) are available to help relieve symptoms of common winter illnesses and you can find further information at www.nhs.uk

To help prevent further spread of Coronavirus (COVID-19) please follow current Government guidelines for the area you live in at all times. If you have any of the main symptoms of coronavirus it's important you get tested as soon as possible. You can apply for a test online via www.nhs.uk/coronavirus, or by calling 119.

See also Page 23

Food Bank Collection

St Martins, Little Stukeley PCC organised a food bank collection in October. The response in the village was very generous and positive and we are now aiming to hold a regular monthly collection.

Our November collection was on Sunday 8/11/2020 and the photograph below illustrates the items collected; they were delivered to the food bank in Godmanchester who confirmed that our donation weighed in' at 58.5 kg. which (in weight terms) equates to 15 evening meals for 2 adults and 2 children or to 4 three-day food parcels for a single person.

St Martins PCC would like to say a very big thank you to all who have donated so generously in the two collections that we have held so far - the November

We would like to advertise that the next collection will be:

Sunday 13th December

Donations can be left in St Martins Church Porch at any time on that day (the PCC members will arrange for the items to be taken to the foodbank on the following day) The food bank that we are supporting is based at the Baptist Church in Godmanchester <https://godmanchester.foodbank.org.uk/>

If anyone feels able to support the collection going forward, all donations are gratefully received but the following are particularly helpful:

Breakfast cereal

UHT milk

Tea bags / instant coffee

Fruit squash / fruit juice (carton)

Tinned cooked meat (eg chilli con carne, beef stew)

Tinned vegetables (peas, carrots, sweet corn)

Tinned tuna/oily fish

Pasta

Pasta sauce rice

Tinned fruit custard

Cracker biscuits

Biscuits

Jam

Rice pudding

Pot noodles

Thank you

St Martins PCC





Godmanchester



St Martin's Church
Little Stukeley
supporting
Godmanchester
Foodbank

This is the food we need

breakfast cereal

tea bags

coffee

fruit squash

fruit juice

tinned fruit

tinned tuna

tinned cooked meat

tinned vegetables

tinned oily fish

pasta & pasta

sauce

rice

custard

biscuits

cream crackers

jam

rice pudding

pot noodles

tinned/packet soup

*Thank you for
helping local people
in crisis*

Godmanchester FoodBank is run by Godmanchester Baptist Church

supported by other local churches

Registered charity number 1089263

Registered in England & Wales



The Stukeleys Heritage Group

The Thatch Cottage, Great Stukeley



The Heritage Group congratulates Dave and Colet Patmore-Hill on carefully maintaining the reed thatch to this important building in Great Stukeley. I'm sure everyone will agree that the work of providing a new ridge thatch has been done to a very high standard by the thatcher, Jeff Helme. Well done Dave and Colet for choosing a local firm who use local materials.

Not only is this building important in its own right but it forms part of the attractive setting for St. Bartholomew's Church.

Thatch Cottage is a Grade 2 Listed Building, described as:
"Late C17 or early C18 cottage with gable end to road. Three bay plan and one storey and attic. Timber frame roughcast rendered. Thatched, half-hipped roof with small gault ridge stack. Two horizontal sliding sashes and one small basement. Two doorways."

Although I think some consider it may have older origins. At one time it housed the village Post Office.

Maybe readers with more knowledge of the history of this important asset to the village could help us record more.

Michael Monk

Convenor, The Stukeleys Heritage Group

01480 456634 / 0776 137 2224

The Stukeleys Heritage Group

The story behind Hill Close in Great Stukeley

We hear much about the current housing crisis, but 75 years ago the nation faced a much greater housing crisis following the loss of and damage to houses in the Blitz. Troops were “demobbed” and many of them formed new households, adding to housing needs.

The Government set about a massive house-building programme to resolve the problem. There was a surge in local authorities building for those in housing need. Here in Great Stukeley what the Huntingdon Rural District Council was then built in 1947 fine spacious well-built semi-detached houses in Moorfield Way and what is now West View. They were snapped up quickly!

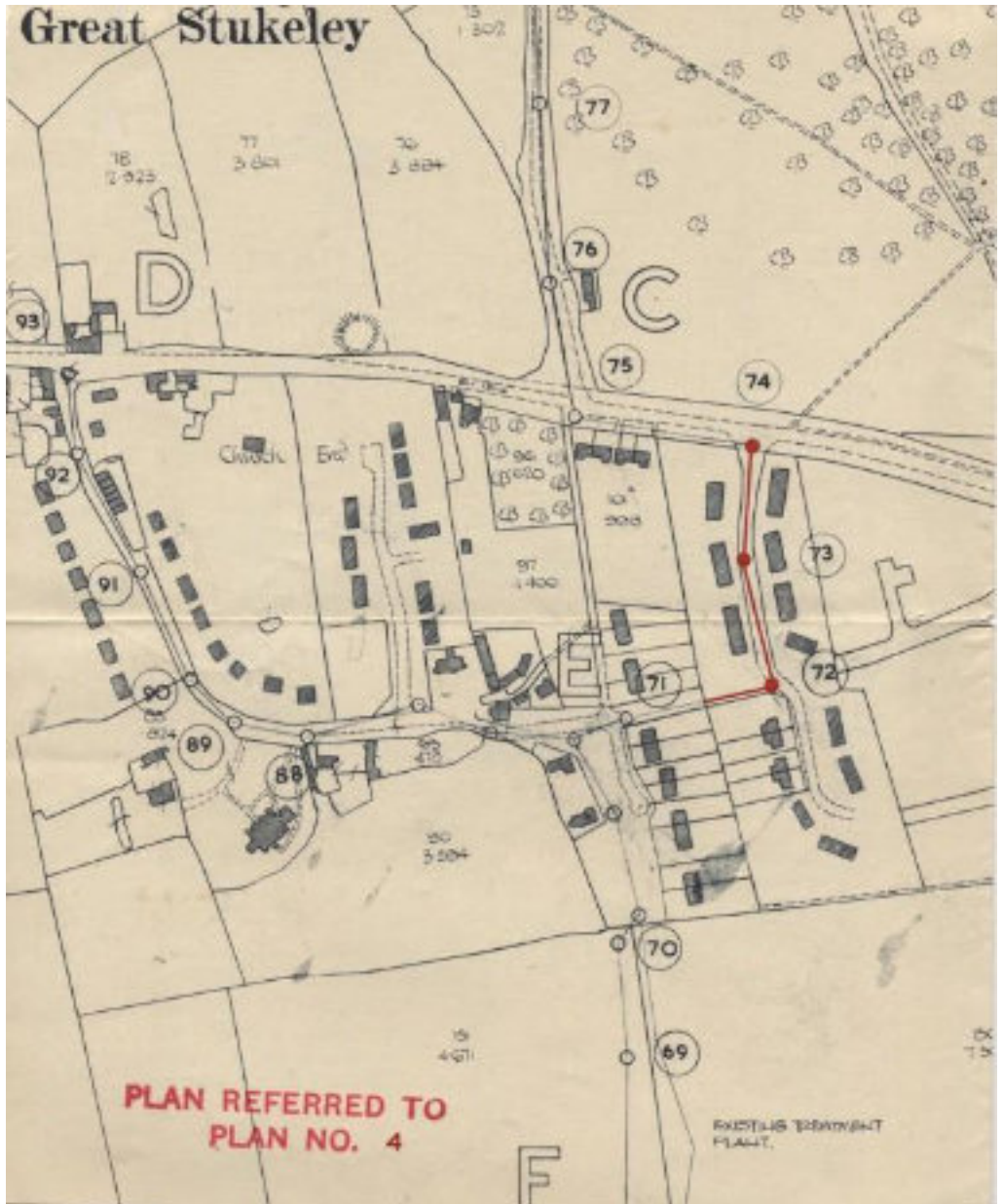
Around that time, Huntingdonshire County Council recognised that the staff it needed to provide essential services were also in need of housing. To attract employees the Council appears to have owned (or bought) land in Great Stukeley. On what is now Park View they built six substantial semi-detached homes for deputy chief officers and four bungalows.

But on the other side of what is now Church Road, on another piece of land, they erected 7 ex-War Department green wooden huts, converted into 14 semi-detached homes. This was known as Hill Close and they survived until the present local council bungalows were built in c.1975.



Hill Close today

The huts had no road access onto Church Road, but instead Hill Close opened onto Ermine Street (then the A14!). This is now pedestrian access only as the main vehicle access is via Church Road.



Map showing how the Hill Close huts were laid out. The two parts of Church Road have yet to be connected through to each other.

To many a County Council employee the huts were a godsend. One such couple, setting up home for the first time were a young couple Ken and Sue Parkin. Ken was a civil engineer working in the County Surveyor's department and he moved in alone 13 months before he and Sue married in 1958 (they had to wait until Sue was 21 as her parents would not give permission for them to marry). Mrs Sue Parkin still lives in the village. She comments "Ken and I thought our hut was wonderful. We'd looked to rent a number of other properties but rejected all of them and then fell in love with the village so much so that we never left. The hut had two bedrooms, bathroom, sitting room and kitchen. It was kept warm and cosy in the winter by a coal burning stove in the sitting room which also gave us hot water. The flue pipe went through the wall into the kitchen and kept that room warm as well, often glowing red hot - in a wooden building! Yet it was cool in the summer, with the wood construction being a good insulator. And we had a good-sized garden where Ken grew vegetables. We could not have wished for a better start to married life."



Below:
Mrs Parkin outside No.1 in 1962.



Above:
Mrs Parkin with Elizabeth in the drive of their hut, No. 1 Hill Close in early 1964. Note the new bungalows in Church Road, part of the developing "Glendale Estate" as it was originally known - and the 1950s/60s VW Beetle!

Michael Monk

Convenor,
The Stukeleys Heritage Group
01480 456634 / 0776 137 2224



Scam Warning - Fake PayPal Emails

Action Fraud is warning people selling items online to be on the lookout for criminals sending fake PayPal emails.

Between January 2020 and September 2020, **21,349 crime reports** were made to Action Fraud about fake PayPal emails.

- Victims reported losing a total of **£7,891,077.44** during this time.
- Those targeted included people selling jewellery, furniture and electronics via online marketplaces.
- Reports of fake PayPal emails to Action Fraud made up a third of all reports of online shopping and auction fraud during this period.

How does it happen?

Criminals have been targeting people selling items online, by sending them emails purporting to be from PayPal. The emails trick victims into believing they have received payment for the items they're selling on the platform.

Typically, after receiving these emails, victims will ship the item to the criminal. This leaves them at a further disadvantage having not received any payment for the item and also no longer being in possession of it.

How can you protect yourself?

- **Sellers beware:** If you're selling items on an online marketplace, be aware of the warning signs that your buyer is a scammer. Scammers may have negative feedback history, or may have recently set up a new account to avoid getting poor feedback. Don't be persuaded into sending anything until you can verify you've received the payment.
- **Scam messages:** Don't click on the links or attachments in suspicious emails, and never respond to messages that ask for your personal or financial details.
- **How to spot the difference:** A PayPal email will address you by your first and last name, or your business name, and will never ask you for your full password, bank account, or credit card details in a message.

If you think you've been a victim of fraud, report it to Action Fraud online at www.actionfraud.police.uk or by calling 0300 123 2040.

Council Officer Impersonation Scam

We've had a report that some residents in Fenland have recently been visited by rogue traders purporting to be Council officers offering loft insulation.

Please be aware that Fenland District Council are not carrying out such work, nor do they endorse any companies offering loft insulation, or supply details of residents to such companies. It is likely that these traders are using the Council's name to access properties in order to steal or to try to get customers to agree to work, whether it is needed or not.

Whilst this matter has been brought to our attention in Fenland, don't forget that criminals know no boundaries and will try their luck over a wide area. Please share this warning far and wide.

If you are visited by a cold caller on the doorstep please remember you do not have to answer the door, it is not impolite to not answer to people you are not expecting. However if you do decide to answer the door remember to:

- Ensure back doors and windows are locked
- Use your door chain to answer the door
- Ask for proof of ID
- Check the ID has not been tampered with e.g. new photo stuck over
- Contact the organisation to check the visitor is genuine - using a number you know to be correct such as from their official website, social media page or a bill (i.e. not a number on the ID card)
- Refuse to engage with anyone who does not offer reliable proof of ID
- A genuine caller will not mind waiting for you to make these checks.
- Report rogue traders to the police on 999 (if still present) or 101 after the event.
- For a free 'Please leave and do not return' door sticker please email: against-scams@cambridgeshire.gov.uk.

Protect Your Passwords

Neighbourhood Watch are currently running a campaign to help you to protect your passwords find out more at <https://www.ourwatch.org.uk/passwords>.



The National Cyber Security Centre (NCSC) also advises people to use three random words to create a strong and memorable password e.g. kneepastahopscotch. By adding numbers and punctuation characters to your password this makes it stronger still e.g. kn33p@st@h0p5c0tch!

NCSC also advise the following to keep your online accounts secure:

- Use a unique and separate password for your email.
- Store your passwords somewhere safe: save to your browser or use a password manager.
- Add extra security to important online accounts: turn on two-factor authentication.

If your account has been hacked please see NCSC's useful guide to [recovering a hacked account](#) and the handy graphic above.

Message Sent By

Robin Sutton (NHWN, Chairman Cambridgeshire Neighbourhood Watch, Cambridgeshire)

Update from Alconbury Weald

Despite the second lockdown, spirits remain high at Alconbury Weald and the local community enjoyed our Halloweald Trail and spooky costume competition – with the prize going to Willow, who made a very adorable skeleton!



We're now looking forward to Christmas and, although we aren't able to enjoy our traditional carols around the tree on the school plaza, we are delighted that once again our residents will be helping turn Alconbury Weald into a giant advent calendar. Each day in December – up until Christmas Eve – a festive, numbered window display will be revealed. The windows will be lit up in the evening, so please feel free to have a walk around and enjoy the creative talents of our residents.

Our weekly food trucks are also proving very popular, with different culinary delights available Thursday-Sunday in the school plaza. From burgers and fish & chips to Vietnamese, Mexican and Italian street food – there is something for everyone. Details of times/dates for the different food trucks can be found on the Alconbury Weald Facebook page or on Twitter @AlconburyWHomes. There is no parking in the school plaza, so if you are driving, please use the Park&Stride car park just a short walk along Swynford Road.

Around Alconbury Weald, work is going well on the new County Council Headquarters, which recently held a Topping Out Ceremony to mark completion of the roof. The new Pavilion – our first community centre is also on track for completion in the Spring. November also saw consent for the next 1000 homes at Alconbury Weald (Key Phase 1 Extension), a new Park and civic square and crucially the area which will deliver the Education Campus. This will see Alconbury Weald's new secondary school and sixth form, which will be run by the Diocese of Ely Multi Academy Trust (DEMAT), and a Special Educational Needs School – Prestley Wood Academy – which will be run by the Spring Common Academy Trust. Infrastructure work will start across this area in the New Year, and the Design Team bringing forward the Education Campus is working up designs to share in early 2021, with a planning application following later in the Spring. The schools are scheduled to open in 2023 – 2024.

Alongside work on site, we continue to work with the Parish Council to put in place the additional signage requested along Ermine Street and to make some changes to the

current traffic calming to respond to the feedback. Further information will be shared about these plans before work is undertaken, which will hopefully be in early 2021.

The team at Urban&Civic, and all our partners, housebuilders and contractors wish all our residents and neighbours a very merry Christmas, and in these troubling times, a healthy and happy New Year.

If you have any queries or would like to talk through current and future plans for Alconbury Weald, please contact Rebecca Britton, Communications, Communities and Partnerships for Urban&Civic on 01480 413141 or email rbritton@urbanandcivic.com





Exterior View



Interior View



CORONAVIRUS: PUBLIC INFORMATION

The Government and NHS are well prepared to deal with this virus.

You can help too.

Germs can live on some surfaces for hours.

To protect yourself and others:

- Always carry tissues with you and use them to catch your cough or sneeze.
- Bin the tissue, and to kill the germs, wash your hands with soap and water, or use a sanitiser gel.
- If you have arrived back from China within 14 days follow the specific advice for returning travellers.

This is the best way to slow the spread of almost any germs, including Coronavirus.

Find out more at [gov.uk/coronavirus](https://www.gov.uk/coronavirus)

Alconbury Community Preschool

The Alconbury Community Preschool was established 40 years ago and is now located in the heart of beautiful Alconbury village at the Alconbury Memorial Hall. We are a Registered Charity (No. 293071), committee run who adhere to the Early Years Alliance constitution. Our wonderful team of experienced caring staff offer personalised care and exciting learning opportunities for all our children. We love to learn in the great outdoors surrounded by nature. Our garden area offers a wide range of opportunities to develop 'green fingers', learn about plant growth, gain motor skills and enjoy messy play in the mud kitchens!

The Preschool is fully compliant with the Government's Early Years Funding scheme eligible for 2 – 5-year-old children. Our learning is documented on a secure interactive online journal, recording key learning achievements with photos/videos. We encourage our parents/carers to add new learning achievements made at home- a great way to see exciting learning steps. Our weekly 'Rising 5s' sessions enable children to develop skills preparing them for Primary school, including phonics, fine motor writing skills, and science experiments. We emphasise building positive relationships with kindness, sharing, listening, and teamwork. We welcome children from the Alconburies, Alconbury Weald, Stukeleys, and surrounding villages.

This Christmas, we're unable to hold our Christmas Fayre with a visit from Father Christmas and his elves (!)- but we still want to do something for children in the community. We're inviting the children to write a letter to Father Christmas on a form supplied by Preschool (£2) and then receive a personalised response from Santa. Please contact Preschool by Monday 7th December if you wish to get involved.

For more information about the Christmas letter project, email louiseacpschool@outlook.com.

To learn more about us, please see the Alconbury Community Preschool Facebook Page, email ACPSchool@live.co.uk or call us: 01480 896006.



Mark making 3



Stepping Stones

What is a Grandparent?

Taken from papers written by a class of 6-8-year-olds.

A grandfather is a man, and a grandmother is a lady!

A grandparent wears glasses and funny underwear.

Grandpa is the smartest man on earth! He teaches me good things, but I don't get to see him enough to get as smart as him!

A 6-year-old was asked where his grandma lived. "Oh," he said, "she lives at the airport, and when we want her, we just go get her. Then when we're done having her visit, we take her back to the airport."

It's funny when they bend over, you hear gas leaks, and they blame the dog.

They don't say, "Hurry up."

Everybody should try to have a grandmother, especially if you don't have television because they are the only grownups who like to spend time with us.

Kathy & Rob welcome you to

The Stukeley's Country Hotel



Please call in or phone 01480 456927, or email : stukeleys@outlook.com

TAKE AWAY MENU

TUESDAY—SATURDAY 5 - 8pm

FISH N CHIPS, with mushy or garden peas

SCAMPI & CHIPS

STEAK N GUINNESS PIE, with vegetables & chips

SHEPHERDS PIE, with vegetables

BBQ CHICKEN, with bacon, cheese & chips

SAUSAGE & MASH, with garden peas

ALL @ £9.00

STUKELEY BURGER (bacon & cheese)

CHICKEN BURGER

VEGGIE BURGER

(ALL SERVED WITH CHIPS)

ALL @ £7.00

SUNDAYS 12 - 3pm

ROAST DINNER £9.50

Tel 01480 456927 or 462410

All to be collected, please wear your mask, be safe

Every Sunday throughout December Christmas Dinner with trimmings and Christmas fayre



2 courses £14.95

3 courses £18.95

Please book tables

12.00 - 3.00pm



SECURE HOME
ELECTRICS LTD

Local Company Providing Expert Advice & Service

Intruder Alarm Installation
Bespoke & Innovative
Security Solutions
Domestic Electrical
Installation

CCTV Installation
Maintenance on existing
alarm systems
Home Security



Dock Green Cottage, 15 Swynford
Road, Alconbury Weald,

Phone 01480 891182
Mobile 07970 824371

Enqs@secure-home-electrics.co.uk
www.secure-home-electrics.co.uk



KTS hypnotherapy
become the new you

What's next on your horizon?



Quit
Smoking



Control
Anxiety



Lose
Weight

*get more out of life!
get in touch today...*

07740 016 625
kthypnotherapy.co.uk



GARDENADE

FOR ALL YOUR
GARDENING NEEDS

NO JOB TOO SMALL

ALL ASPECTS OF GARDEN MAINTENANCE
COVERED
FREE QUOTES
COMPETATIVE PRICES

CALL TODAY

07402 811594 - ADE
ADE101@LIVE.CO.UK



Contact details for a free no
obligation quote.
Tel: 07958 066746
stevenpowercarpentry@gmail.com

**All aspects of carpentry and construction undertaken
No job is too big or small.**

Services include:

- Kitchen installations
- Conversions
- Wooden flooring
- Bespoke furniture
- Decking
- Doors
- Windows
- Roofing
- General building
- Stairs

Over 13 years' experience in the Construction
Industry as a qualified Carpenter & Joiner.

AGC SERVICES



Provides:

Boiler Servicing & Installation

Help if you have Central Heating Problems

Electrical Installation & Fault Finding

Fully Gas Safe Registered & Corgi Electrical Registered

Domestic and Commercial

For Friendly Advice on Heating, Gas and Electrical Problems

Call Nino on:

01480 412483 or 07786 437126

Or Email augustingaetano@talktalk.net



bringing lawns to life

If you've been thinking about enjoying a great lawn this year – green, lush and weed-free, why not contact us today and let us bring your lawn to life.

We provide four seasonal treatments, as well as beneficial treatments to keep your lawn in tip-top condition - prices start from just £5* per month.

PRICES FROM
£5*
PER MONTH

Ask us about our annual plans, which allows you to both spread the cost and save up to 25%.

GreenThumb
LAWN TREATMENT SERVICE

Simply call: 01234 709345 or visit: greenthumb.co.uk   

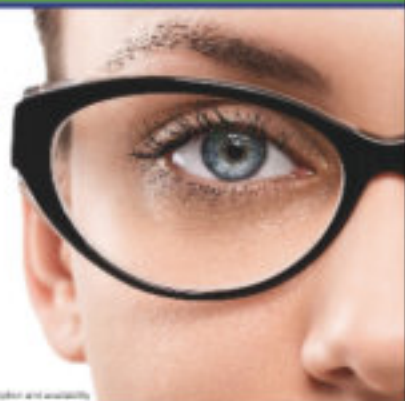
*Based on a lawn size of 40m²

Paying too much for your glasses?

Save Money - Buy Direct!

Visit our factory shop to see our fabulous range of Discount Prescription Eyewear

- Hundreds of frames to choose from, including designer frames from Ray-Ban, Polo Ralph Lauren, Oakley, PRADA, Ted Baker and Versace
- Specialists in high and complex prescriptions
- Same-day or next-day service available*
- Save up to 75%
- Huge range of designer sunglasses
- Full range of sports eyewear



Official stockists

*Subject to prescription and availability



POLO
RALPH LAUREN



PRADA TED BAKER
CYCLOCAR LONDON

VERSACE

We are open 9am to 5pm Monday to Friday, and 9am to 1pm Saturday



ALL EYES
SPECTACLE MAKERS

Call us

01954 231545

Visit our website

www.all-

20 Norman Way Industrial Park, Over, Cambridge CB24



**Hatha
Yoga
Classes
2018**

Brampton and Little Stukeley
Tuesday and Thursday evenings

Strength, Flexibility, Relaxation,
Breathing and Fun

Mixed ability class for beginners
to advanced students - everyone
welcome

Become mindful in your life.

Booking required
Contact Jane

yogawithjane@tutanota.com

07958 757076

Local Cleaning Service

**Busy or unable to clean?
Let Me do it for you**

**Over 25 years'
experience**

Ring:

**Mrs Terry Paddick
after 6 o'clock pm**

Tel: 01480 453795



Alconbury Independent Baptist Church

We are an international church who have a common salvation in a glorious redeemer the Lord Jesus Christ. The gospel is the message of saving grace from Almighty God to lost souls through Christ our precious Saviour. If you would like to find out more about Christ or require a Bible, please contact us on the information below!

Sunday	Morning Worship (Children's Church for 5-11years)	10:45am
Sunday	Evening Service (monthly)	6pm
Wednesday	Prayer Meeting	6.30pm



All are Welcome to any of these services!

Live broadcast on Sunday morning on YouTube or Facebook

We are located across the road from the old main gate of RAF Alconbury. 37 Ermine Street, Lt Stukeley, PE28 4BE.

If you have any questions or want to find out more about the Christian Faith. Please contact Pastor G Marley.
Tel: 01480- 455300 email: pastor@alconburybaptist.org

Looking unto Jesus the author and finisher of our faith.... (Heb 12:2)

pastor@alconburybaptist.org

THE CHURCH OF
JESUS CHRIST
OF LATTER-DAY SAINTS

ERMINE STREET, GREAT STUKELEY
NEXT TO THE VILLAGE HALL

Bishop: Richard Malachowski

Sunday Service Schedule

9.30am to 10.30am: Sacrament Meeting

10.30am to 11.30am: Children ages 3-11 classes; Youth ages 12-18, Young
Single Adult and Adult Sunday School

Alternating Sundays:

Children ages 3-11 classes; Young Women and Young
Men ages 12-18 lessons; Priesthood (males 18+) and
Relief Society (Sisters, age 18+) lessons.

Schedule repeats, starting at 12.30pm with **Bishop** Michael Waters

All are welcome to come and worship with us!

Weekday meetings:

Tuesday Nights: Youth meetings (ages 12 – 18), starting at 7.00pm

First Thursday, Sisters monthly meeting and activity, at 7.00pm

Sunday Evenings, every other Sunday – Young Single Adult meeting and activity

Come and see what we believe – try www.comeuntochrist.org

Believe: Learn about the Savior, Jesus Christ, and how basic beliefs of His Restored Gospel can enrich lives

Belong: Jesus can make you a better person. You can make us a better community. Come worship with us!

Become: We are all trying to be better human beings. Explore ways to aid your personal and spiritual growth.



GRACE FELLOWSHIP BAPTIST CHURCH

GOD LOVES YOU AND SO DO WE

SUNDAY WORSHIP @ 11 AM

We are an international group of believers worshipping Jesus together. We might be small, but we have big hearts for Jesus. Our mission is to Glorify God, Transform our Community, and Reach the World with the Gospel of Jesus Christ. We believe that God has called us to love Him and to love one another. If you are looking for a church home, or just somewhere to worship on Sunday, we hope to see you. If you need more information, please check out our website @ gfgg-baptist.org.

The second Saturday of each month we host a men's fellowship breakfast. Please join us for a meal, discussion, and time of fellowship.

If there is any way we can help of if you need to speak to someone please call Pastor Eric Gren at 01832 293143 or email at egren921@gmail.com.



ST BARTHOLOMEW'S
GREAT STUKELEY



ST MARTIN'S
LITTLE STUKELEY

ST BARTHOLOMEW'S GREAT STUKELEY ST MARTIN'S LITTLE STUKELEY

Church services

Christmas is not cancelled. We spend December thinking about the Advent themes of hope, peace, joy and love. We prepare to welcome the birth of God's son, the visible sign of God's love for us on December 25th. How we celebrate this year will be different, and is still unknown, but whatever we can do, we pray that 'the Holy Child of Bethlehem is born in our hearts.' May you have a peaceful Advent and Christmas.

- December 6th 9.30 am Holy Communion, Great Stukeley
- 13th December 9.30 am Christingle, Great Stukeley
9.30 am Holy Communion, Little Stukeley
- 20th December 9.30 am Christmas Praise, Great Stukeley
- 24th December 6.00 pm Online Benefice Carol Service
11.00 pm First Communion of Christmas, Great Stukeley

We look forward to welcoming you at one of our services

All our services are following current COVID 19 guidelines: people are expected to wear face masks on entering the building unless exempt. You are asked to sanitize your hands on entering and also on leaving the building. Please observe social distancing. There is no singing, or coffee after the service. We are required to take people's contact details for Test and Trace purposes. We will use The Stukeleys' Community Group, and Next Door to advise people of any changes if government guidance changes after December 2nd.

St Bartholomew's Church is open for individual prayer on Wednesdays
St Martin's Church is open for individual prayer by arrangement

Rev Fiona Brampton (01480 538726 revfiona@norleigh.org.uk) and Rev Mandy Flaherty (01480 896541 rector@norleigh.org.uk) are available for prayer or a chat (by phone or in the garden).

Rev Fiona Brampton

Associate Priest, North Leightonstone Benefice
29 Church Road
Great Stukeley
01480 538726 revfiona@norleigh.org.uk

Churchwardens

Great Stukeley	Harry Raby Diane McGoff	01480 453269 01480 456238
Little Stukeley	Camilla Payne Sally Smith	camilla@uk.com sallysmith101@aol.com



We're here to help you stay well this winter



GP

Call your GP practice or visit their website to arrange an appointment. This may take place over the phone or via video. If needed, you will be seen face to face.

PHARMACY

Prescriptions, over the counter medications and first aid help, everything you need is still available at your local pharmacy.

111

NHS 111 can help if you're not sure what to do. Call 111 or visit 111.nhs.uk 24/7. If you're in a mental health crisis call 111 and select option 2.

URGENT TREATMENT CENTRE or MINOR INJURY UNITS

Located in Ely, Wisbech and Peterborough you can get help with minor injuries and illnesses, as well as xrays

Visit www.nhs.uk for more information

Your Local Printer

- Business Cards
- Leaflets
- Flyers
- Forms
- Booklets
- Tickets
- And so much more...



www.easiprint.biz
01480 718270

FREE DELIVERY

easiprint

23 Levellers Lane Ind Est, Eynesbury, St Neots, Cambs, PE19 2JL



CENTRE FOR COMPLEMENTARY HEALTH



Osteopathy | Physiotherapy | Acupuncture | Chiropody | Alexander Technique | Clinical Psychology

With over 20 years experience working with local GP's, we're able to offer a range of the most relevant natural health and complementary therapies

This includes treatment for:

**back & neck pain • headaches • sports injuries
foot problems • other musculoskeletal problems**

T: 01480 455221 **E:** info@CentreForCompHealth.com **W:** CentreForCompHealth.com
6 Cambridge Road, Godmanchester PE29 2BW

Follow us on Google+  Follow us on Twitter  Like us on Facebook 

CREASEFREE IRONING SERVICE

Need Help With Your Ironing?

I offer a professional, local ironing service. Friendly and reliable. Collection and Delivery to suit your needs. Next day delivery available. Hangers and plastic covers provided if requested. I also offer a wash, dry and fold service if required.

- Weekly
- Monthly
- Pre-holiday
- Post-holiday
- One off
- Illness
- Convalescence



Call Tricia
07731 049 206
To discuss your requirements and prices