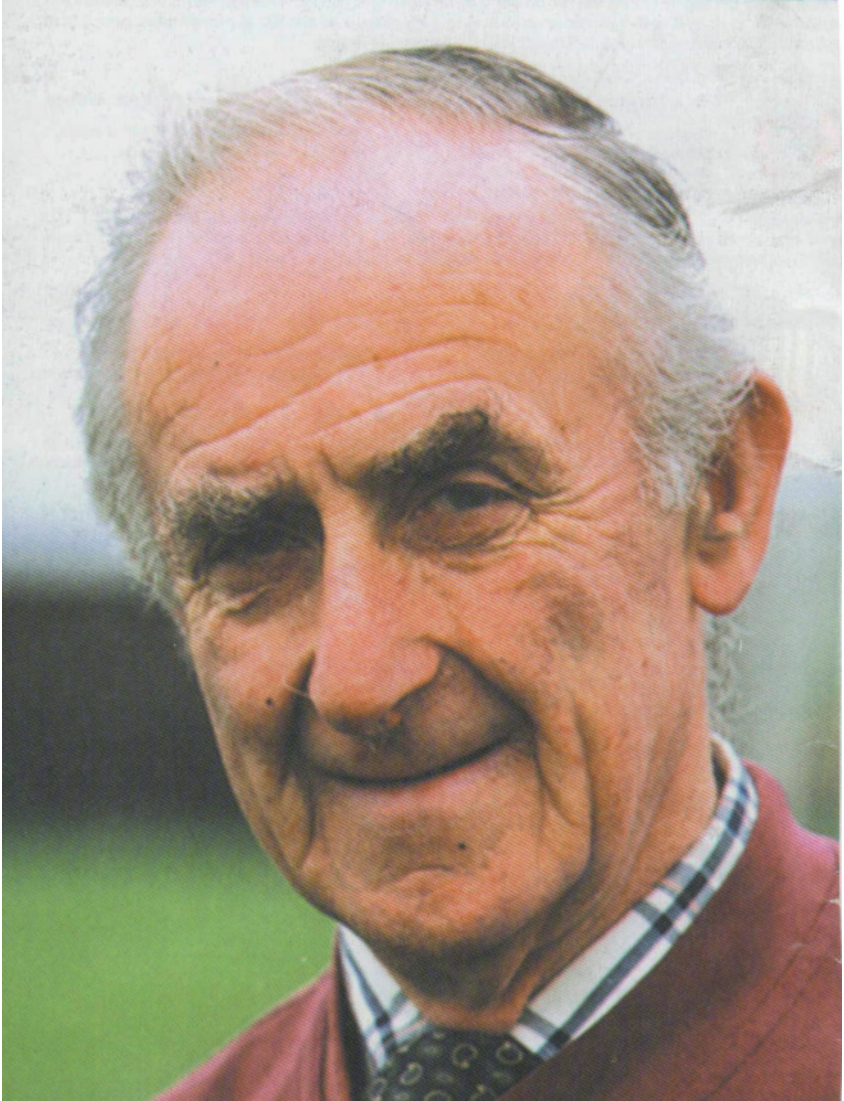




AUGUST 2013



**Michael Newman, our hard working Parish Clerk, is retiring.
See pages 15, 16 & 17.**



**FULLY INSURED
PROFESSIONAL AND
RELIABLE PROPERTY
SERVICES**

01480-436747

enquiries@hpp-ltd.co.uk

Visit our website at:

www.hpp-ltd.co.uk

- Refurbishments
- Renovations
- Extensions
- General Building Work
- Kitchens
- Bathrooms
- Home Make-overs
- Garage Conversions
- Block Paving
- Patios
- Decorating



Osteopathy | Physiotherapy | Acupuncture | Chiropody | Pilates | Alexander Technique



Enhance Your Well Being With Our Natural Health Treatments

With over 20 years experience working with local GP's, we're able to offer a range of the most relevant natural health and complementary therapies

This includes treatment for:

- ↕ back & neck pain
- ↕ headaches
- ↕ sport injuries
- ↕ foot problems
- ↕ other musculoskeletal problems

Contact us for advice and information on our wide range of treatments

call: **01480 455221**

mail: info@CentreForCompHealth.com

visit: CentreForCompHealth.com

6 Cambridge Road, Godmanchester PE29 2BW



BUPA and PPP Registered Providers

September 2013 Magazine Cut-off Date

Cut-off date for the September Stukeleys Parish Magazine is
9am Monday 19th August 2013

FUTURE EVENTS

Mon 5 th August	Parish Council Meeting	7.30 pm	LSVH
Sat 3 rd Aug	GS Flower, Garden & Craft Show	12.30pm	GSVH
Tue 6 th Aug	Clarence House Trip	8.15am	GSVH
Wed 11 th September	WI Meeting	7.30pm	GSVH
Sat 7 th September	Little Stukeley Flower Show	3.00pm	LSVH
Sat 14 th September	Little Stukelley Safari Supper	6.30pm	LSVH
Wed 18 th Sept	Heritage Group Annual Outing	9.00am	GSVH
Sunday 13 th October	Harvest Festival Lunch	12.00pm	GSVH
Saturday 19 th October	Harvest Supper	6.30pm	LSVH

Take a look at the Magazine website at www.stukeleymag.co.uk

Email to: Martyn at martyn@stukeleymag.co.uk

Post/drop in to: 7 Hill Close, Great Stukeley PE28 4AZ

Tel: 01480 432633 Mob: 07710 171924

Please include your phone number in case of queries.

Space in the magazine is limited, so articles should be about 300 words. This is to allow as many people as possible the opportunity to contribute to the magazine. It would be helpful if you could submit articles sized to an A5 page in Word or PDF.

We reserve the right to refuse an article, cut its length or hold it over to a later issue without notice.

Please Note: Any articles or letters appearing in this Magazine are accepted in good faith and are purely the opinion of the Writer and do not necessarily reflect the opinions of the Editor or Parish Council.

This Month

Page 5:	Parish Council Meeting Report
Page 6:	Shape Your Place
Page 7:	Little Stukeley Village Hall
Page 8:	Clarence House & Famous Mothers Trip
Pages 11:	Almost Abba
Page 14:	GS Flower, Garden & Craft Show
Pages 15-17:	Michael Newman, Parish Clerk Retires
Page 18:	Stukeleys Heritage Group
Page 19:	Great Stukeley Table Tennis Club

In Memory of George Stillwell

Donations raised in memory of George for
Marie Curie raised £81.

Well done to everyone who gave.

Many thanks.

Jean

Grazing Available

Approx 1.5 acres,

Owl End, Great Stukeley

Contact: Paul 01480 450434

Open Garden at

Wytchwood Owl End weekend 23rd June

The weather was disappointing but we still
raised one thousand and seven pounds for the
National Garden Scheme Charities.

Thank you to all who helped, in particular
Sue and Ken Parkin who have been helping
for many years.

David Cox

July Parish Council Meeting Report

Eight Councillors, a County Councillor, Rebecca Britton of U&C and three members of the public attended the July Council meeting.

Ms. Britton confirmed that U&C had been selected to receive central government funding amounting to £4.8 million in relation to the Enterprise Zone status and that this would facilitate the early introduction of the southern access to the site onto the A.141, which was exceptionally good news for our residents.

A Council official from HDC and a representative from Cambs Acre attended to discuss the introduction of some affordable housing onto a site on the northern edge of Little Stukeley, they said this was possible if the project could be adopted by a housing association and would mean that an element of market housing would also have to be included. Cambs Acre agreed to survey village residents to see if these houses were required and by whom.

It was reported that the council had not received grant aid for the refurb of footpath 13 but Rebecca Britton revealed that through a special contractual agreement with their contractors they are required to undertake some elements of community aid work, she was to investigate possibilities.

It was reported that allotment preparation works were now well underway on the Owl End site and that they should be completed by the end of August.

As there appeared to be some problems in evidence on the boundaries of the playing field and the newly constructed practice pitch behind the Three Horseshoes it was agreed that a meeting be held between the neighbour, the football club and the Council in an effort to sort these problems out.

The next Council meeting will be on Monday 5th August 2013 at 7.30pm in Little Stukeley village hall.

Michael. J. Newman, Clerk & RFO.

NB. I AM SORRY TO HAVE TO KEEP BANGING ON ABOUT DOGS, BUT, WOULD THE THOUGHTLESS PERSON WHO PICKS UP BEHIND THEIR DOG IN LOW ROAD, LITTLE STUKELEY, THEN LEAVES THE BAGS IN THE ROAD, ON PEOPLES LAWNS, INSIDE FIELD GATES, **PLEASE REFRAIN,** AS THE REST OF US DOG OWNERS FIND THIS A DEPLORABLE THING TO DO!!!



Email: ashley.whittaker@cambridgeshire.gov.uk
Telephone: 01223 703537



"Hi there, my name is Ashley and I'm part of the ShapeYourPlace community engagement team in Huntingdonshire. I've had a great few months since I started and have had the opportunity to work with some of the district's libraries, youth clubs, parish and town councils, schools and community groups but I'd like to meet more of you!

If you'd like to learn more about how www.ShapeYourPlace.org can support your volunteer organisation or community group, or help to promote a local event, get in touch and I'll come out to meet you. I can offer training one-to-one or in larger groups if you'd like to learn how to raise issues or publish blogs on the site.

I'm also still growing my bank of community reporters so if you'd like to share your community's big story, raise awareness of local issues or just share good news about what goes on where you live, then I'd love to hear from you.

Linda's Companion Gardening



Need someone reliable to water your plants?

Or help you with small gardening jobs in your garden?

What I can do to help: help you enjoy your garden, help with a few small gardening jobs, whether it be, helping you with your hanging baskets, dead heading your flowers, light pruning, or watering plants.

What I do not do: heavy digging, mowing lawns, heavy pruning.

I am a friendly & trustworthy lady gardener, living locally in the village

RHS(Royal Horticultural Society) level 2 Diploma & Insured

My service is unique, so if I can help you with any of the above, then contact me for reasonable rates. Look forward to hearing from you!

Contact: Linda Hutchings on:

Tel: 07401 563 308

Email:linda4calmerlife@btinternet.com

LITTLE STUKELEY VILLAGE HALL

Flower Show

A reminder about the flower show on Saturday 7th September. The Hall will be open from 9.00 am to 12.30 pm for exhibitors to register their entries. Judging will be from 1.00 pm to 2.30 pm, and the show will open at 3.00 pm. Schedules listing the categories for exhibits in the show have been distributed; if anyone has been missed, or needs additional copies please contact me. We hope to have some new games and sideshows as well as a licensed bar (beer, wine and spirits). This is a small friendly show so please don't be reluctant to enter your exhibits, you could easily win; you won't win a fortune if you do, but you will see your name in print! In any case come along to support the event and have an enjoyable afternoon.

Donations for the Tombola Stall.

Once again we are asking you to let us know if you have anything for the Tombola stall. If so, then please would you either contact one of the following, or leave your donation at their house by **Thursday 6th September**

Keith Winter 4, Sanders Close

Tel: 450656

Cheryl Wilson Hillside, Church Way Tel:
435581

Bryan Schofield 1, Mill Close

Tel: 411284

Finally, **would all winners from last year still holding trophies please return them to me by**

Thursday 5th September; cleaned, please!

Keith Winter

(Tel: 450656 email: keithwinter2@sky.com)

Safari Supper
to start in Lt Stukeley Village Hall
on Saturday 14th September at 6 .30pm Tickets £10
from Jocelyn Kerr Tel 453213.

Harvest Supper
Lt Stukeley Village Hall
on 19th October 7pm
Tickets £10
from Jocelyn Kerr Tel 453213.
Bar and Raffle.

CLARENCE HOUSE and FAMOUS MOTHERS' TRIP
Tuesday 6th August 2013

This truly wonderful tour tells the story of Mothers' and Motherhood in London through the ages. After all behind every statue of a man is a story of his Mother!.

The following itinerary is designed to brief you on our trip:

08.00am Please plan your arrival at the *Great Stukeley Village Hall*. Parking is NEVER GUARANTEED. PLEASE CALL FOUR (4) DAYS PRIOR to departure and I will have news of the availability of parking.

08.15am PROMPT departure by C&G Coaches from the *Village Hall*. PLEASE BE ON TIME as we have a 71 mile trip.

10.30am We pick up our Blue Badge Holder Guide, *Jeanie Carmichael*, who will be with us for the rest of our time in London.

10.35am We make our morning coffee and comfort stop at ultra-modern *Salvation Army Café* opened by the Princess Royal in November 2004.

11.15am We rejoin our coach for a very informative journey around the City. Statues and buildings of interest will be pointed out in connection with Motherhood from Roman times through the present day.

12.45pm We disembark from our coach at the *South Bank*. Our lunch break will give you a chance to discover a very special restaurant or coffee shop of your choice or you may like to bring along a picnic basket.

2.15pm We rejoin our coach, at the same drop-off point, for our visit to *Clarence House*.

2.30pm Our THREE(3) groups of 18 people each will visit

2.45pm *Clarence House* where there will be a 'house guide'

3.00pm For each group to visit the five ground floor rooms.

PLEASE NOTE THAT THERE ARE NO TOILETS AVAILABLE

4.00pm As each tour last about an hour we will depart from *Clarence House* as soon as the third group has ended their visit.

4.15pm Afternoon tea and a comfort stop at *St. Martins in the Field Crypt Café*.

5.00pm We rejoin our coach at the same drop-off point for our journey home.

7.30pm Expected time of arrival at the *Great Stukeley Village Hall* - depending on traffic out of London.

PARKING: If parking is allowed for this trip at the *Great Stukeley Village Hall* it will take place on a first come/first served basis. For this favour your car MUST BE PARKED on your immediate LEFT as you enter the IN entrance to the *Village Hall*-as near to the trees and as far away from the main building as you can.

Please remember to give me a call FOUR (4) days before our trip when I will be able to give you news regarding parking in the *Village Hall* car park-if parking information is required.

I am delighted that you have signed up for this most informative and much looked forward to day's tour.

If you have any questions regarding this trip please feel free to call me.

Mary Alleyne-James
Organizer
Tel 01480 433 954

**Coronations and Celebrations:
Tuesday 12th November 2013**

During our trip through London on Tuesday 12th November 2013 we will see a range of places pivotal to the life of Queen Elizabeth II.

The house where the Queen was born during the chaotic days of the 1926 General Strike, the Harley Street premises where the Queen's father, then Bertie, Duke of York, overcame his stutter with the help of the Australian speech therapist ,Lionel Logue, and where the teenage Princess first met her future husband. You will also hear of her incognito London adventures with her governess, Crawfie.

Our *Special* permit allows us to be taken off the beaten track to follow royal routes NOT normally accessible by coach-through Hyde Park where the Queen learned to ride on Rotten Row and along Birdcage Walk and then the Mall to Buckingham Palace.

Following our lunch at The Mad Hatters Hotel, included in the price, we have a very informative *private* tour of Westminster Abbey with our specially trained Blue Badge Holder Guides-Jeanie Carmichael and Marion Bacon.

Price per Person £ 53.00-which includes morning tea/coffee and lunch.

**Mary Alleyne-James
Tour Organizer
Tel 01480 433 954**

**Thursford's Christmas Spectacular 2013:
Sunday 17th November 2013**

The THURSFORD theatre will be beautifully decorated for our visit helping us to get into the Christmas spirit.

The stage is one of the longest in Europe allowing us the possibility of experiencing a remarkable show with dancers, singers, comedians, jugglers, a jazz band a drum and fife band- backed-up by a 32 piece orchestra.

This extremely popular show rivals West End productions. THURSFORD'S CHRISTMAS SPECTACULAR encourages thousands of people from all over the country to book early to secure hard-to-get seats in the shows which run from mid November to Christmas Eve.

Departing from The Great Stukeley Village Hall promptly at 10am will enable us to secure our super seats for the 2pm show on Sunday 17th November 2013.

If you have any questions regarding this year's show please feel free to call me.

The price per person for this trip is £ 49.50 which includes the show and the return coach trip.

**Mary Alleyne-James
Trip Organizer
Tel 01480 433 954**



FUNDRAISING FERRET RACING EVENING 2 Saturday 22nd March 2014

Our much looked forward to Fundraising Ferret Racing Evening 2 ,with an American theme, is to be held at The Great Stukeley Village Hall, on Saturday 22nd March 2014.

This exciting, funny and unpredictable event will be organized by Helga and Chris Tyler of International Ferret Welfare Rescue (IFWR), based in Walsall, which is run by volunteers from all over the UK.

IFWR, approved by the RSPCA, rescues and rehomes around 200 Ferrets each year. Funds come entirely from their highly popular Indoor Ferret Racing Nights and Sponsorships 100 percent of all funds raised are used to offset the costs of Ferret housing, food and veterinary bills.

Our Fundraising Ferret Racing Evening 2 has been planned with you in mind. Please join us for this important Great Stukeley Village Hall Fundraiser by putting the date on your New Year Calendar!

**Mary Alleyne-James
Event Organizer Tel (01480)433 954**

Open Garden Weekend

For once the British weather was kind to us on the weekend of 29/30th June, and although I was unable to attend personally I gather that in the main, the event was well supported, and enjoyed by those who came. There were I know, a few "technical hitches", which we have noted and will endeavour to avoid in future. A big thank you to everyone who allowed us to invade their privacy and share the delights of their garden. There was something for everyone - from Champagne served on a bandstand (thanks Sarah) to the culinary delights served in our beautiful church. Large gardens, small gardens and everything in between provided inspiration for any budding gardener, from the very traditional to the ultra-modern. An occasion like this does not happen by magic there is a lot of work involved behind the scenes. Thanks to anyone who contributed in any way - to the village hall committee, the volunteers who tidied up the church yard, did the displays in the church, made and served refreshments, opened their gardens and of course to those people who attended without whom the whole thing would have been pointless! We raised something in excess of £250.00 for village hall funds but the day was less about money and more about having a village day in which everyone could take part.

Thanks again. See you in 2015.

Carol Buttercase.

ALMOST ABBA



Friday 9th August 2013 at 8.30pm

At Great Stukeley Village Hall PE28 4AQ

Don't miss this gig by the fantastic local tribute band Almost ABBA. Come as you are or dress in your best ABBA or 70s disco gear. All profits go to Great Stukeley Table Tennis Club. Licensed bar. Doors open at 8pm.

Tickets £10 from Sarah Toyn 07961 358067 email sarah.toyn@yahoo.co.uk or The Elephant & Castle at Wood Walton or available on the door.



Coffee Morning

Friday 20th September 2013

10.30 – 12.00

At the Village Hall

The Stukeleys WI are holding a coffee morning to raise money for Marie Curie and MAGPAS Air Ambulance. Do come and join us for a tea or coffee and slice of cake for £1.50 with free refill. Try your luck in the draw and tombola and other games where prizes can be won.

THE STUKELEYS WI

Meeting held on Wednesday 10th July 2013

The President, Jan Sly welcomed 17 members and visitor Hazel Pauley to the meeting. 10 apologies for absence were received. We sang Jerusalem.

Jan thanked Nancy Oldfield for the Curtis Bowl and Draw Prize and Doris Sadler for the refreshments. Avril Aldred and Sarah Toyn volunteered to do refreshments for the September meeting. The Minutes for the last meeting were read and signed as correct.

Jan thanked everyone who contributed and attended Open Gardens which made £250 for the Village Hall. The Stukeleys WI Charity Event was discussed which this year will be a Coffee Morning at the Village Hall on Friday 20th September 10.30-12.00. It was decided to charge £1.50 for a slice of cake and tea or coffee with a free refill. There will be a draw, tombola and a couple of other games to raise money for MAGPAS and Marie Curie.

Various notices were read out regarding forthcoming events. The Halloween Bazaar is on 19th October and members agreed to do a Hamper draw. The table tennis club is running an Almost ABBA night on Friday 9th August at the village hall to raise money for its forthcoming Hunts 2 Star Open Tournament – tickets available from Sarah. The WI Autumn Show is 27th and 28th September at Walden Road entries to be made by 31st July.

Jan introduced the speaker Mr Trevor Gunton who kindly stepped in at the last minute to give a talk on various UK islands including Brownsea Island, the Farne Islands and Isle of Mull. He gave an informative and at times amusing talk accompanied by slides with particular reference to the landscape and birdlife. Doris Sadler gave the vote of thanks.

The competition was flowers in a small unusual container. 1st prize: Joan Gray 2nd prize: Jan Sly 3rd prize: Moira Eddington. The draw prize was won by Nita Charter

The **August Outing is on Wednesday 14th August at 11.30am** to Willingham Auctions for a talk by the Auctioneer and 2 course lunch.

The next meeting will be **11th September 2013 at 7.30pm**. Speaker: Mr A Butler on Huntingdon Streets. Curtis Bowl Jan Sly and Draw Prize: Shirley Berrill. Competition: An A4 collage with Huntingdon theme. Roll call: your favourite garden bird.

Sarah Toyn

The Great Stukeley Flower, Garden and Craft Show 2013

Well time has flown past and this very much anticipated show is upon us! We hope you will support us in this community event this year.

The show is being held on Saturday 3rd August at the Great Stukeley Village Hall. Doors open to the public at 2.30pm and those staging entries for the Show doors open to you from 9am to 12 noon.

Iain Shaw
Acting Chairman



ST BARTHOLOMEW'S CHURCH

Harvest Festival Lunch

(In aid of Church Funds)



Get your tickets now

**A Harvest Lunch is planned for 12.00pm on
Sunday 13th October 2013**

**All are welcome to join us earlier in Church for
Harvest Festival Service at 9.30am**

**Do come along and join us at the
Great Stukeley Village Hall**

**for the usual mix of convivial company and good food
that our Harvest meals are known for.**

**Tickets priced at: £10.00 for Adults & £ 7.00 for
Children,**

**which includes the food and a glass of liquid refreshment,
can be obtained from**

Mrs Nancie Raby Tel No 453269

Mrs Doris Turpin Tel No 456476

or

contact any member of St Bartholomew's Parochial Church Council.

***The food will be served at 12.30pm and will no doubt, as on previous occasions,
prove a popular family event so book early to avoid disappointment***

VACANCY for PARISH CLERK

The Stukeleys Parish Council

Responsibilities

The Clerk is responsible for:

- Administering the affairs of the Council
- Advising the Council on Policy Matters
- Guiding the Chairman on procedural issues
- Ensuring Council decisions are conducted according to the relevant rules, regulations and procedures.

Role

The Clerk's role is wide ranging and covers, but is not limited to:

- Office Manager
- Financial Administrator
- Book Keeper and Accountant's Officer
- Purchasing and Supply Officer
- Liaison Officer with other Authorities and bodies
- Legal Officer Public Relations Officer
- IT Manager
- Committee Secretary
- Additional tasks as appropriate

The successful applicant will be required to work from home and be able to attend evening meetings. The hours are varied but are approximately 25 hours per month.

A full job description is available on request.

Salary

To be advised and is dependent on experience.

Application

Please send an application letter & full CV to ken.parkin@btinternet.com or by post to Mrs Sue Parkin, Chairman, The Stukeleys Parish Council, 43 Park View, Great Stukeley, Cambs PE28 4AJ

Closing Date: 13th August 2013

PARISH CLERK

As most of you will know the Clerk to the Stukeleys Parish Council Michael Newman has resigned for reasons he has explained elsewhere in the magazine. Michael has been the mainstay and fount of all knowledge for the Council for thirty eight years, Councillors have come and gone but Michael has always been there, carrying out his duties in a calm and efficient manner, but he didn't stop there, with his pride in the villages he carried out many tasks that were not within the remit of the Clerk's post, he was in effect the villages' caretaker.

Personally in my role as Chairman he helped me in the steep learning curve I was faced with and, although not attached to the Council, with his depth of knowledge I am sure he will help me and others in the future, he is that kind of man.

We will miss you Michael and behalf of the Parishes and Councillors we wish you a long, healthy and happy retirement spending more time and longer holidays with Margaret.

Sue Parkin

Chairman, Stukeleys Parish Council

Michael Newman

I have only known Michael Newman for a relatively short time whilst I have been Editing the Stukeleys Parish Magazine but I am very grateful for all the help and advice he has given me.

Michael's Parish Meeting Reports have always been sent in on time and have been very informative if not exactly exciting reading. Much more interesting and amusing was his series of articles entitled "Life In Little Stukeley Through The Years" that was printed in the Stukeleys Parish Magazine in 2009 & 2010. Again in March 2012 he put pen to paper but sadly , this time, it was to write a lovely article about his cousin, Josh Gifford, who had passed away in February.

It's been a pleasure working with you Mike and I have especially enjoyed our chats when I have delivered cheques or cash received in payment for adverts in the Magazine.

You will be a hard act to follow Mike. I hope you have a long and happy retirement. Best wishes.

Martyn Fox

Editor, Stukeleys Parish Magazine

PARISH CLERK

No doubt by the time you read this many people will be aware that I have informed the Council that I no longer wish to continue in this role. When I started as the Clerk in 1975 I was in my early thirties and the majority of the 13 Councillors at that time were in their 50's and 60's, now some thirty eight years later the roles are reversed with me over 70. During that period I have had the privilege to serve some 45 Councillors, in the early days there was always an equal representation from each village.

Over the past months I have looked at my roll and I sincerely believe that this is a good time for me to stand down as there is an enormous work load for your Council to address over the coming years, especially with the development proposals for Alconbury Weald, which in the words of one much respected Councillor is more than likely to be the biggest single planning application ever likely to have been put before a small rural Parish Council to adjudicate upon, this together with the 'Northbridge' proposals and those for Ermine Street Business Park, all of these significant issues I feel that I no longer have the capacity to deal with, especially with my lack of 'short hand'.

Parishioners, please appreciate that your Parish Council is passionate about the issues involved with such large development proposals right on our doorstep, whilst we are probably unable to stop them, your representatives are in earnest dialogue with Urban & Civic and the District Council in a concerted effort to try and ensure that these two villages retain as much of their truly rural identity as is possible, a rural identity that those of us that were 'born here' and those of you who have come to settle here I am certain, are also keen to protect, so please support the Council in these efforts wherever you feel you can. The challenges are enormous but I am sure that with the help of Urban & Civic, who with, in particular Rebecca Britton who has been immense during the negotiations thus far, I am hopeful that resolutions can be found that satisfy both sides. After such a long time I should possibly not single out anyone in particular, but I am going to, Terry Pinner, a lifelong friend, to whom as Chairman, I was Clerk for thirty seven years. And my 'Tower of Strength' and confidant for a large slice of those thirty eight years I must make particular mention of Michael Monk to whom I will always be grateful for his immense support through thick and thin. I wish Sue and her team every good fortune in the coming years and they are assured that if I can be of assistance in any way (most definitely not as a Councillor) I am always available.

Thank you to everyone.

Michael. J. Newman.

**The Stukeleys Heritage Group Annual Outing
Wednesday 18th September 2013
IMPORTANT REMINDER**



We are close to having enough people signed up to make this trip viable. Please remember you do not have to be a member of the Heritage Group to come on this visit!

We will depart from Great Stukeley Village Hall at 9 am and return later that afternoon about 5.30 pm.

The cost is £15 for travel only.

Payment in cash please to me by Friday 16th August.

You may simply wish to have lunch and walk in the country park (free). There is also the Parish Church to see. If you wish to see the museum and gardens only, entry is £8.00 (seniors £7.00), or you can visit the House, museum and gardens for £12.00 (seniors £10.00)

**Michael Monk, Convenor, Stukeleys Heritage Group
33 Church Road, Great Stukeley. 01480 456634
michaelgmonk@hotmail.com**

**The Stukeleys' Heritage Group
Archaeological Finds Presentation**

Apologies to all those who turned up to hear James Fairbairn talk about the archaeological finds at Owl End. James was taken ill on the afternoon of the day of the meeting (17th July), possibly with sun-stroke after spending days on another site in the full sun and heat.

I will arrange another evening for James to come over to talk to us.

**Michael Monk
Convener, Stukeleys' Heritage Group**



Presents the 2nd

Urban&Civic

HUNTS 2 STAR OPEN TABLE TENNIS TOURNAMENT

Sponsored by  TOPSPIN
SPORTS

Saturday 31st August and Sunday 1st September 2013
9am – 6pm

At One Leisure St Ives Westwood Road St Ives PE27 6WU

Following last year's successful inaugural tournament, this year it will be run over 2 days. Saturday will be for the junior events under 11s, under 13s, Cadets and Juniors boys and girls. The Senior events will take place on Sunday including Mens and Womens Singles, Banded and Veterans. Many of the country's top players will be competing so come along to watch some superb table tennis – **it's free for spectators.**

If you would like to enter, the entry form is available on line on the English Tables Tennis Association (ETTA) website: etta.co.uk/competitions. For more information please contact Sarah Toyn on sarah.toyn@yahoo.co.uk or 07961 358067.



Stukeley Meadows Youth Football Club finally unveiled their brand new mini-soccer pitch at their End of Season presentation evening on Saturday 1th June 2013 at The Three Horseshoes Pub, officially opened by Bob

Leigh from Babcock Dyncorp. Not only content with moving home to Great Stukeley, SMYFC now has a total of 5 league teams and Tiny Tacklers Football Development squad for 4-6 year olds.

Through the generosity and assistance of The Stukeley's Parish Council SMYFC were able to use The Recreation Field as their home pitch, while work continued on the Mini Soccer Pitch thanks to the support of Doddy & Michelle at The Three Horseshoes Pub. This project was vast, many thought it was a pipe dream and would not be accomplished only to be proven wrong by the tenacity, dedication and sheer hard work, blood, sweat and many tears of only handful of club members. With the additional support and financial assistance from Huntingdons Freeman Trust, Babcock Dyncorp, OCS, Hilton Meats and Waitrose the dream became a reality. This has truly been a community project with many small businesses assisting with some of the more challenging aspects. Many who have watched the transformation from overgrown wasteland to perfectly flat soccer pitch thought this was a pipe dream, have been amazed by this hard work and even the club members cannot believe what they have achieved. Was it frustrating? Yes! Was it almost too much hard work, insurmountable even? Sometimes....but was it worth it? Most definitely!! If anyone would like further details about SMYFC, please feel free to contact:

Club Secretary Jo Haddock on 07753 251196.

AGC SERVICES



Provides:



Boiler Servicing & Installation

Help if you have Central Heating Problems

Electrical Installation & Fault Finding

Fully Gas Safe Registered & Corgi Electrical Registered

Domestic and Commercial

For Friendly Advice on Heating, Gas and Electrical Problems

Call Nino on:

01480 412483 or 07786 437126

Or Email augustingaetano@talktalk.net

Need glasses?



Buy direct from the Specs
Manufacturer

Save up to 75%

**Especially on High/complex
prescription:**

- Single Vision Specs from just £9*
- Bifocals Specs from £39*
- Varifocal Specs from £59*
- Reglaze your own frame save ££*
- Emergency Specs & repairs*
- Premium frames & lenses at low prices
- Large selection of frames in stock

(*T & C's apply, please ring for details)



Spectacle Makers

...why pay more?

Just bring in your prescription for a TOP QUALITY bargain.

Visit our Factory Shop:
20 Norman Way Ind. Park
Over, Cambridge CB24 5QE

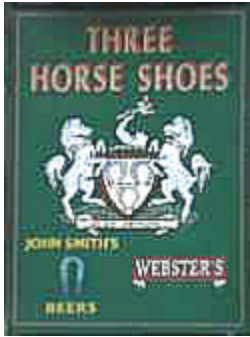
Tel: 01954 231545 or 07824 706969

Email: info@all-eyes.co.uk

Website: www.all-eyes.co.uk

Factory Opens: Mon - Fri 9.00am to 5.00pm

(Shop opening times may vary, please check to avoid disappointment)



THREE HORSESHOES

Ermine Street, Great Stukeley PE28 4AH

A friendly family Pub run by Michelle & Doddy

**Keep watching this space for
news of our refit.**

Coming soon

Don't forget we are a Family Friendly Pub
We have swings etc. for children and a
good selection of beers (including Cask Ales), spirits
and soft drinks for adults.

Private Parties catered for.

Come and visit us. We look forward to seeing you.

For more information phone Michelle on 07927 909345

The UK's No.1 Lawn Care Company



- Scarification
- Aeration
- Lawn Fertilising
- Weed Control
- Moss Control
- Water Conserver
- Pest and Disease Management



GreenThumb has a variety of treatment programmes to suit your pocket that include our traditional 'pay-as-you-go' service and our new, pay monthly, Direct Debit programmes, where you can save up to 25% annually.

Our treatments start from £5 per month, that's cheaper than D-I-Y and without the hassle!

Call your local branch today for a FREE lawn analysis and no obligation quote.

0800 0111 222

GreenThumb
LAWN TREATMENT SERVICE



Find us online at: www.greenthumb.co.uk

WILKINS

ESTABLISHED 1895

CHIMNEY SWEEP®

- ✿ **TRADITIONAL BRUSH
AND VACUUM SERVICE**
- ✿ **NESTS REMOVED**
- ✿ **CAGES, CAPS AND
COWLS FITTED**
- ✿ **SWEEPING CERTIFICATES
ISSUED**
- ✿ **PROFESSIONAL, CLEAN
SERVICE**
- ✿ **FULLY INSURED**
- ✿ **POLICE CHECKED**

01223 521069

**wilkinschimneysweep.co.uk/
cambridge**



**Step
by**

...we'll lead the

**Ballroom & Latin American Dance
Classes**

Adults

Monday evenings : Bluntisham Village Hall

Thursday evenings : Alconbury Memorial Hall

**Friday evenings : Houghton & Wyton Memorial
Hall**

*Private Lessons by arrangement for
General Improvement - Medal Tests - Wedding Dance*

For further information

email :

enquiries@stepbystepballroom.co.uk

telephone : 07876 130037



M&D FLOORING

A Family Run Business With Over 30 Years Experience

- CHOOSE SAMPLES IN THE COMFORT OF YOUR OWN HOME
- ALL FLOORING SUPPLIED AND FITTED AT COMPETATIVE PRICES
- DOMESTIC AND COMMERCIAL INSTALLATIONS
- UPLIFT AND DISPOSAL OF OLD FLOORING
- FURNITURE MOVING SERVICE AVAILABLE

- CARPETS
- VINYLs
- LAMINATES
- SOLID WOOD FLOORING
- LUXURY VINYL TILING
- ENGINEERED WOOD FLOORING

To make an appointment please call

Matthew Mob: 07871 277244
Eve: 01487 812825

David Mob: 07711 744625
Eve: 01480 454752

Visit us at www.CarpetsVinylsandWoodenflooring.co.uk
Email: info@CarpetsVinylsandWoodenflooring.co.uk



STUKELEY'S COUNTRY HOTEL

Telephone 01480 456927

Food served 12.00-2.30.00pm and 6.00-9.00pm

Two Meals for 9.95

These meals change every two months

Sun 12.00 – 3.00pm and 6.00- 9.00pm

*We have a **HOMEMADE** section in our menu, come try something of your choice.*

Senior citizens, Mon/Tue

*Saturday Grills (with a **FREE** starter or dessert) and Sunday Roasts, from £7.95*

£5 OFF

A MEAL FOR TWO AT STUKELEY'S HOTEL

Complete your details and present this voucher
(USE FOR MAIN MEALS ONLY)

Name:.....

Address:.....

This voucher is not valid in conjunction with any other
Special promotion. Valid until Sept 2013

The Retreat

HOLISTIC BEAUTY

A salon with a difference;

01480 700621

- Spa-like surroundings
- Spacious rooms
- A warm welcome
- Relaxed, unhurried treatments
- Holistic experts
- Beauty experts
- Quality products
- Fair pricing

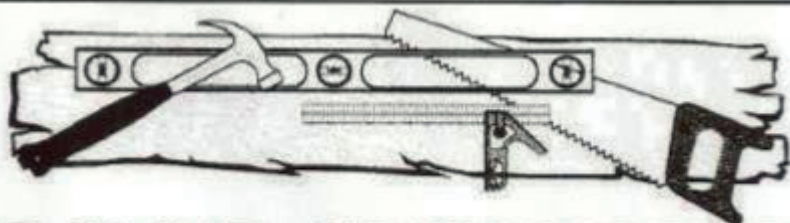
Book now for **20%** off your first visit!

Threading from £5, Dermalogica 1 hr facials £40, Crystal Clear microdermabrasion, Nouveau eyelash extensions, Thai massage, Sports Massage, Aromatherapy oils blended just for you... Couples massage...so much more...and of course Vouchers so that you can share the experience.



www.theretreat.me.uk

1a, George Street, Huntingdon. PE29 3AD



DAVID HUMPHREY

Carpenter & Joiner

21 Lake Way, Stukeley Meadows, Huntingdon, Cambs PE29 6SU

VAT Registration No 759 633 89

- Small works
- Fitted kitchens
- Loft conversions
- Windows & Doors
- General property repairs

Call today for a free quotation.

Tel: 01480 432275 Mob: 07788 428580 Fax: 01480 451566

Do you have misty double glazed units, stiff locks, broken leaded lights or shop windows?

Listed Building, Modern House, Office or Church?

•Fast efficient service

- DGU Replacements
- Single & secondary double glazing
- Specialist & Safety Glass
- Solar & Safety Film
- Shop Plates

•Quality products

**Leaded Light specialist
Stained Glass restoration, repairs and remakes**



•Affordable prices

- Composite Doors
- PVC, Wood & Aluminium windows and doors
- Lock picking, repair and replacement
- Child Safety Restrictors
- Mechanism replacements

We do all this and more. For advice and free quote call us now on

Office: 01487 831120

Mobile: 07799 061919

saltream@gmail.com www.saltream.co.uk

Registered Company No. 5996469



MILL ANTIQUES & COLLECTABLES

1 MILL STREET, HOUGHTON, HUNTINGDON PE28 2AZ



**BUYING & SELLING
FREE VALUATIONS
HOUSE CLEARANCE**

PETER BROWN

TEL: 01480 468646

MOB: 07080 801393

EMAIL: MILLANTIQUES@HOTMAIL.CO.UK



Lady with Small Van



Available for local work.

House Clearance - Garden Rubbish - Garage Clearance

No Job Too Small

Also Small Deliveries and Collections

In and around Huntingdon Area

Ring Anne On 07977 590170



FANTASTIC BUSINESS OPPORTUNITY

INTERNET RUN SO CAN BE MANAGED FROM THE
COMFORT OF YOUR OWN HOME.

CAN BE RUN EITHER PART TIME OR FULL TIME

ALONGSIDE YOUR PRESENT JOB

FOR MORE INFORMATION PHONE

ALAN ON 07828 059784

Or go to www.talkfusion.com/1819215

**THE CHURCH OF
JESUS CHRIST OF LATTER DAY SAINTS.
ERMINE STREET, GREAT STUKELEY,
NEXT TO THE VILLAGE HALL.**

Bishop Matthew Wade

Sunday Services

10.00am to 11.15am Sacrament Meeting

11.15am to 12 noon Sunday School Classes for 12 years old and over.

11.15am to 1pm Primary For under 12 year olds, and Nursery for 18 month old to 3 years old.

12 Noon to 1pm Relief Society Meeting for Sisters 18 years and over(Women)

12 Noon to 1pm Priesthood Meeting for Brothers 18 years and over(Men)

12 Noon to 1pm Young Men and Young Women Classes for 12 to 18 year olds.

All are welcome to come and join us.

Weekday Meetings

Every Tuesday:

Youth Meetings for 12 to 18 year olds from 7.30pm to 8.30pm

First Wednesday of each month:

Sisters Meeting from 7.30pm to 9pm



GRACE FELLOWSHIP



An International English Speaking Baptist Church for Everybody

Love God: Love People: Serve the World

'I was glad when they said to me, "Let us go to the house of the Lord."' Psalm 122 : 1

Why not come and join us? A warm welcome always awaits you. All of our meetings are open to you.

Every Sunday	10.40 am	Prayer Meeting
	11.00 am	Worship Service
	7.00 pm	Small Group Study at Church NOT SUNDAY 11th Aug
Every Monday	7.30 pm	Prayer Meeting
Every Thurs & Friday	7.30 am	Skype Prayer Group. Just Phone Pete and add your number, to join in.
Saturday 10 th August	9.00 am	Men's Breakfast Fellowship

2nd Sunday each Month 3.00 pm Afternoon Worship at Great Gidding Baptist Church

If there is any way in which we can help or any questions you need to ask please call Pete and Penny Bourne on 01480 432207 or 07887707940 / 07908093224 or email us at penny.bourne@sky.com bourneagain38jer333di@gmail.com or phone David Stokes on 01480 891023 and we will do our very best to help. If you need help with transport to any of the meetings just call Pete or Penny as above. If you would like more information about Grace Fellowship visit our website, www.gracefellowshipbaptist.co.uk Please like

Grace Fellowship on Facebook : www.facebook.com/gracefellowshipibc

or Great Gidding Baptist Church: www.facebook.com/Great-Gidding-Baptist-Church/229739410473098

Our Next 'Film Night at Grace Fellowship' will be..... on FRIDAY 16th AUGUST at 7.30 pm

'THE SECRETS OF JONATHAN SPERRY'

Look forward to seeing you there!

Interlaken was such a great trip. We had good journey there and back, the weather was sunshine every day. Once again as we sat under the towering mountains watching the boats on the 2 lakes that Interlaken sits between, while we drank iced tea and coffee. We could only gaze at the wonder of God's creation in amazement. This was the 50th time that the I B C has held the conference at that place and no wonder! What a place to study the word of God. Can you think of a better place to have a conference than sitting in a room that looks out on the beauty of the mountains that surround you? To us it is like coming home to the family that we have not seen for a year. It makes the fellowship so good and so relaxing as we share what's happening in their churches spread all over the world. Yet God is working in each one though in separate ways, this only goes to show just what a great God we have when we get to know Him.

Pastor Pete Bourne

CHURCH SERVICES



**ST BARTHOLOMEW'S
GREAT STUKELEY**



**ST MARTIN'S
LITTLE STUKELEY**

August				
4th	9.30 am	Holy Communion CW		No Service
Tenth Sunday after Trinity	Celebrant	Rev'd Philip Swindells		
11th	8.00 am	Holy Communion CW		No Service
Eleventh Sunday after Trinity	Celebrant	Rev'd Andrew Milton		
	9.30 am	Family Service		
	Leader	Alan McGoff		
18th	9.30 am	Holy Communion CW	8.00 am	Holy Communion
Twelfth Sunday after Trinity	Celebrant	Rev'd Philip Swindells	Celebrant	Rev'd Andrew Milton
25th	9.30 am	Morning Prayer	11.00 am	Holy Communion
Thirteenth Sunday after Trinity	Leader	Janet Talbot	Celebrant	Rev'd Andrew Milton
September				
1st	9.30 am	Holy Communion CW		No Service
Fourteenth Sunday after Trinity	Celebrant	Rev'd Philip Swindells		
WHO'S WHO IN THE CHURCHES				
Churchwardens	Richard Turpin		Sally Smith	
	Montagu House		16 Low Road	
	1 Church Walk	Great Stukeley	Little Stukeley	
	Harry Raby		Camilla Payne	
	Brookfield Farm		Old Rectory, Church Way	
	Great Stukeley		Little Stukeley	
Secretary of the Parochial Church Council	Alan McGoff			
	4 Seathwaite			
	Stukeley Meadows	Huntingdon		
Vice Chairman of the Parochial Church Council	Richard Turpin		Jocelyn Kerr	
	Montagu House		2 Mill Close	
	Church Walk	Great Stukeley	Little Stukeley	
	Tel: (01480) 456476		Tel: (01480) 453213	
	Fax: 07092 365508			
Rector	Revd Andrew Milton			
	Tel: (01480) 412674			

Independent Financial Advice

01480 451 412

www.huntsifa.co.uk



- **Is this how you feel when faced with a financial decision?**
- **One which you do not really have the skill or knowledge to decide upon?**

We specialise in helping people aged 60 plus make the right decision in the following areas;

- **Equity Release**
- **Impaired Annuities**
- **Pension Transfers**
- **Long Term Care**

**Don't leave one of the most important decisions of your life to luck; speak to the specialist
NOT**

'Dom down the Pub' or 'Beryl-Ann in the Hairdressers'!

We have 21 years experience and 1,000's of satisfied clients

**Ring us on
01480 451 412
for a free interview
to discuss your needs.**



positivesolutions®

altogether **individual**

3 Royal Oak Passage High Street Huntingdon Cambs PE29 3EA 01480 451 412

twenty4-7

Airport transfer specialist

Stansted from £54
Luton from £56
Heathrow from £95
Gatwick from £109
Birmingham from £89

Credit/debit cards accepted
On-board DVD Entertainment
Baby/Booster seats provided
All airport parking charges included
Theatres/Days Out/Theme Parks - and more

Tel: 07514 141338
or 01480 466333



Visit www.twenty4-7.co.uk

PROFESSIONAL, RELIABLE SERVICE



Going to the airport?

Take the stress out of getting there with an executive chauffeur driven car you can rely on to be **on time, every time**

- 24 hour Duty Manager
- Live flight monitoring
- Complimentary travel packs
- E-mail and text confirmations

Call **01480 890200** or visit www.flexecars.co.uk

FlexEcars is part of the **Flex-Able Group**,
30 Edison Road, St Ives, PE27 3LF. Est. 1994

Your Local Printer

- Business Cards
- Leaflets
- Flyers
- Forms
- Booklets
- Tickets
- And so much more...

**NOW
PRINTING
CLOTHING**

www.easiprint.biz
01480 718270

FREE DELIVERY

easiprint

23 Levellers Lane Ind Est, Eynesbury, St Neots, Cambs, PE19 2JL



A Local Qualified Decorator
Reasonable Rates - Reliable
Insurance Work undertaken -
Internal & External Decorating

Painting - Wallpapering - Coving - Property Maintenance - Roof
Maintenance - Gutters also cleaned, repaired or replaced
Local References on request



Give Rob a call on 07971 337581 or 01480 891961
Or email: r.bates01@btinternet.com

